



Lighting systems and components for the domestic appliance industry



1



2



3



4



Your Connection to Light



Lighting systems and components for the domestic appliance industry

Summary of contents



	Hot		
	Oven lamps with twist and release lens		
	· 77.228	[00]	14
	· 77.226	[00]	14
	Oven lamps for round cut-outs ø 35.5 mm		
	· 77.208	[00]	16
	· 77.228	[00]	17
	· 77.912	[00]	18
	· 77.222	[00]	19 - 21
	· 77.226	[00]	21
	· 77.225	[00]	22 - 24
	Oven lamps for round cut-outs ø 48 mm		
	· 77.718	[00]	25
	· 77.703	[00]	26
	· 77.704	[00]	27
	· 77.904	[00]	28
	Oven lamps for round cut-outs ø 67 mm		
	· 77.943	[00]	29
	· 77.906	[00]	30
	· 77.928	[00]	31
	· 77.926	[00]	31
	Oven lamps for rectangular cut-outs 30 x 70 mm		
	· 77.945	[00]	32
	· 77.946	[00]	32
	· 77.935	[00]	33
	Oven lamps for rectangular cut-outs 55 x 70 mm		
	· 77.638	[00]	34
	· 77.708	[00]	34
	· 77.728	[00]	34
	· 77.632	[00]	35
	· 77.707	[00]	35
	· 77.630	[00]	36
	· 77.705	[00]	36
	Oven lamps for rectangular cut-outs 101 x 55 mm		
	· 77.722	[00]	37
	Lighting for steam proof applications		
	· 77.208	[00]	38
	· 77.708	[00]	39
	Lighting for combined ovens and microwaves		
	· 77.948	[00]	41
	Cooker hood lighting		
	· 73.101	[00]	44
	· 77.404	[00]	44
	· 25.834	[00]	45

	Wet		
	Lighting for tumble dryers with LED or Edison screw lamps		
	· 73.101	[00]	48
	· 77.401	[00]	49

	Cold		
	Refrigerator lighting with LED or Edison screw lamps		
	· 73.101	[00]	52
	· 22.225	[00]	53
	· 22.230	[00]	53 - 54
	· 22.234	[00]	54

General information	[00]	57-62
BJB worldwide	[00]	63-69



Frank

Nicole

Dennis

Daniela

Welcome to the "Perfect BJB Dinner" with our employees Frank, Nicole, Dennis and Daniela. In this catalogue you will not only discover how to make a delicious evening meal, but also how our domestic appliance lighting solutions assist and support the work in the kitchen.

For a perfect dinner: Lighting solutions from BJB.

Welcome to BJB, the leading supplier of domestic appliance lighting systems and components worldwide. Welcome also to the perfect BJB dinner with our employees Nicole, Daniela, Frank and Dennis. In the process of preparing a delicious dinner, these four will also demonstrate the features and advantages of our lighting solutions.

You will see that when good lighting is integrated into domestic appliances it assists the work in the kitchen and creates a pleasant atmosphere. Whether it is a saddle of lamb in the oven, a refreshing drink in the refrigerator or the clean dishes in the dishwasher, with good lighting you see more.

All the lighting solutions we offer in this catalogue are developed in Germany by experienced engineers and manufactured in modern, certified production facilities. We conform to international standards and also meet the highest safety standards. Because quality is our strength, we can guarantee the outstanding func-

tionality and long service life of our components and systems without reservation.

It is no coincidence that BJB supplies the majority of manufacturers in the domestic appliance industry worldwide, comprising many well-known brands. With eight subsidiaries on three continents and representatives in 50 countries, we are present throughout the world and always in close proximity to our customers.

And now we hope you will enjoy the perfect BJB dinner. If you have any questions or suggestions concerning either our products or our recipes, please do not hesitate to contact us. With BJB you are choosing the expertise of a global market leader with over 140 years of experience in the field of lighting technology.



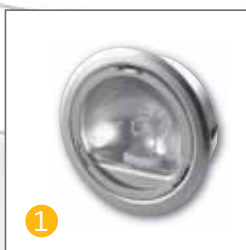
The family have to be able to see their favourite dish.



Ready or not?



We provide light in every domestic appliance, whether "Hot", "Wet" or "Cold".



The BJB range of lighting solutions and components for domestic appliances encompasses the categories "Hot", "Wet" and "Cold". This is how we describe the environmental conditions under which these products are used. These then determine the necessary technical characteristics of the product.



As well as oven lamp assemblies, which we have been producing since 1979, we also provide lighting solutions for cooker hoods, refrigerators, freezers, washing machines, driers and dishwashers. As light sources we use general service incandescent lamps, halogen lamps or LED solutions. Depending on your requirements, you can choose the appropriate product from a wide range.



One further point, our development team will be pleased to assist you with project-specific or product-specific solutions. If you would like special lighting effects, require specific levels of illumination or want to use a particular type of light source, we will develop an individual product for you. Talk to us. We always enjoy a new challenge.



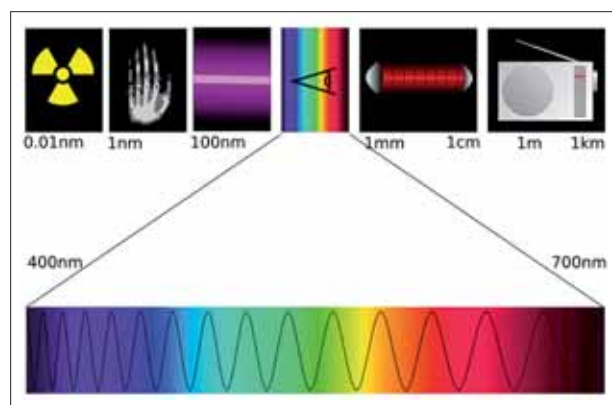
Good light is more than just bright or dim.

What effect does light have?

It is well-known that human beings take in 80 % of all information via their eyes. To do this they need light. Good light is not only important for purposes of orientation and safety, it also has a major influence on our well-being. Seen from this perspective, light always has an objective and a subjective component. Objectively, we want to see what is in the fridge and find what we are looking for quickly. Subjectively, we want to recognise and assess whether the chicken in the oven is succulently and deliciously roasted. See, recognise, assess, act. Without good light, this basic process is not possible.

Good light integrated into domestic appliances produces customer satisfaction. Bad light may lead to dissatisfaction with the entire product. From this point of view, it is therefore perfectly reasonable to describe good light as an effective sales promotion instrument.

Indeed, it is not difficult to inspire customers with good light. One merely has to know – and heed – a few basic quality rules of lighting technology. We have listed the most important of these below. If further detailed professional knowledge is required, our lighting specialists will be pleased to help. Now, let's see what really counts.



The human eye only perceives a small part of the electromagnetic spectrum as light.



Annoying shadows can be avoided by changing the angle of incidence or by using alternative light sources.

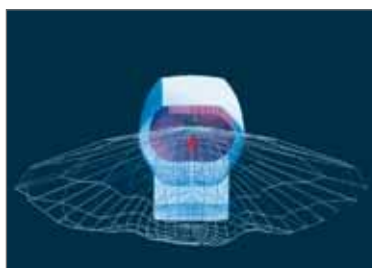
Good lighting will stand up to any comparison.

Illuminance

Illuminance, measured in lux, is the quantity of luminous flux falling onto a surface. For us, the question is how much light actually strikes the places we want to see. What power rating must lamps have to achieve the necessary values? What is the influence of the area surrounding the space to be illuminated?

All these questions can be answered through calculation and measurement. The illustration opposite shows how different the illumination of a baking tray can be in various zones. The results are different depending on where the oven lamp assembly is fixed and which reflectors and light sources are used.

When light fittings are used in cooker hoods, it is also important to have the correct degree of illuminance in the cooking area. In other words, the right level has to be achieved. Neither too light nor too dark.



Dazzle

Dazzle not only reduces visual performance, subjectively it is perceived to be unpleasant. It can also lead to discomfort and tiredness. It is caused by excessive differences in light density or when the absolute light density is too high in relation to the degree of adaptation of the eye. All these aspects have to be considered and avoided when designing light fittings for domestic appliances.

This is achieved by means of screening or the use of light directing elements such as reflectors, which increase the illuminating area and thereby reduce dazzle to an acceptable level. A decisive factor in avoiding dazzle is to identify the critical emission range of the light source from the outset and to incorporate appropriate counter-measures into the design, for example by developing special reflectors.



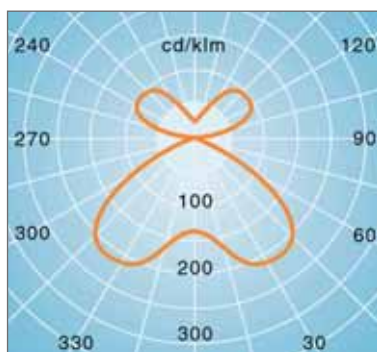
Example of oven lamp with optimised reflector.

Light - where, how and for how long?

Light intensity distribution

Is there enough light in all parts of the refrigerator? Is there adequate illumination for everything to be seen well? These questions refer to the level of illumination, which concerns the light distribution within a space rather than the illumination of a surface.

The design of the reflector plays a decisive role here. This is the chief factor in determining the shape of the light distribution curve. Ideally, it should be adjusted by a specialist to the space which is to be illuminated, thereby ensuring an optimum light quality in the relevant domestic appliance.



Light output

Higher light output and, consequently, improved energy efficiency are increasingly the focus of interest in energy policy discussions. As a result, the general service incandescent lamp, which is now over 100 years old, is coming under increased criticism due to the fact that it converts only 5 % of its energy intake into visible light. Laws to ban the use of this light source are being prepared in a number of countries, or have already come into force. Substantially higher levels of efficiency are achieved with halogen lamps, for example. However, due to the various manufacturing technologies in use, there are still considerable quality differences which have to be considered when developing a lighting solution. There has also been rapid technical progress in the field of LED and for certain applications, these are increasingly being seen as an alternative to conventional lamps.

Service life of lamps

As in the case of light output, there are also considerable differences in the service life of lamps. One reason for this is the technology used, but manufacturer-related causes may also play a role. Good quality general service incandescent lamps have a service life of approximately 1,000 hours, halogen lamps twice as long, and modern LEDs can last 50,000 hours or more depending on the application.

Good solutions can be recognised by the quality of the light.

Colour rendering

Good light reproduces the colours of objects in as lifelike and natural a form as possible. For example, it is responsible for making a pepper look red in the refrigerator or a cucumber green. The quality of colour rendering depends on how evenly the spectral colours of a light source are distributed. Technically, one refers to the CRI (colour rendering index). The reference value here is natural light with a value of $R_a = 100$. Very good results are achieved with halogen lamps, and general service incandescent lamps are also a good choice in some cases.

Modern LEDs also achieve a high CRI rating, which is comparable to that of halogen lamps.





A dish like this saddle of lamb can only be cooked to perfection if the lighting is good. A look at the timer is not sufficient to make a final judgement on the quality of a dish. This is why manufacturers worldwide so often employ high-quality lighting components from BJB in their domestic appliances.

Hot: Lighting solutions for cooking and baking.

In this chapter you will find lighting solutions for ovens, microwaves and cooker hoods. We have been developing and producing numerous versions of components and systems for these applications since 1979. As a result, we can now say that BJB probably has the widest range of oven lamp models and unparalleled expertise in this field.

In addition to the classic general service incandescent lamp, we are increasingly using mains voltage or low voltage halogen lamps. Here, as in other fields, special G4 low voltage halogen lamps produce excellent lighting results.

Similar results are also achieved using mains voltage G9 halogen lamps.

High quality domestic appliances in particular are often equipped with lighting solutions based on halogen lamps.

In general, our products can be installed securely and easily, are temperature resistant and designed in accordance with applicable international standards and regulations (IEC 60598/VDE 0711). A further advantage for our customers is BJB's worldwide presence and, therefore, the central availability of all standard products in our distribution warehouses. What we offer, we can also deliver.

However, if you are looking for special

components for your domestic appliances which are not included in this catalogue, we will be pleased to help you with the development of an individual solution.



A particularly innovative lighting concept is this indirect light source which emits bright halogen light all the way through to the back of the oven. It was developed in cooperation with Neff. Essential features of the design are the reflectors in the oven door, which reflect the light from a low-voltage halogen lamp and ensure even illumination on all three levels.



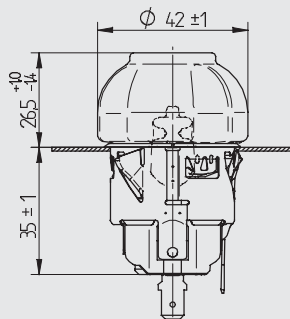
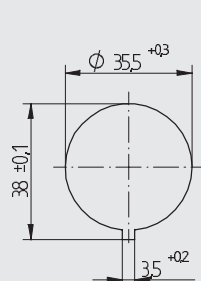
HOT

77.228 77.226

Oven lamps for round cut-outs $\varnothing 35.5$ mm with twist and release lens



pkg. wt. part no.
50 95 g **77.228.1101.10**

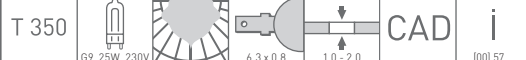


With twist and release lens
Snap in fixing
Lens: soda-lime glass (hard glass) 350° C
Sleeve: CrNi
Lampholder: Steatite
Connection: Tab terminals vertical

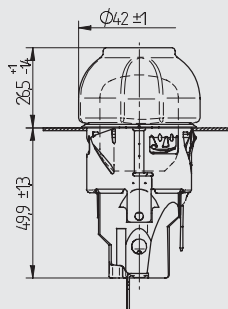
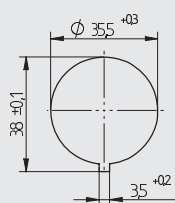
Lamp: G9, 25W

- Also available with welded cables
- Lamps for other voltages on request
- cURus on request

Depth of embodiment for version with vertical tab terminals: + 12 mm (an allowance must be made for the corresponding connector)



pkg. wt. part no.
50 87 g **77.226.1104.10**

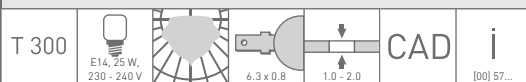


With twist and release lens
Snap in fixing
Lens: soda-lime glass (hard glass) 350° C
Sleeve: CrNi
Lampholder: Porcelain
Connection: Tab terminals vertical

Lamp: E14, 25W

- Lamps for other voltages on request
- cURus on request

Depth of embodiment for version with vertical tab terminals: + 12 mm (an allowance must be made for the corresponding connector)

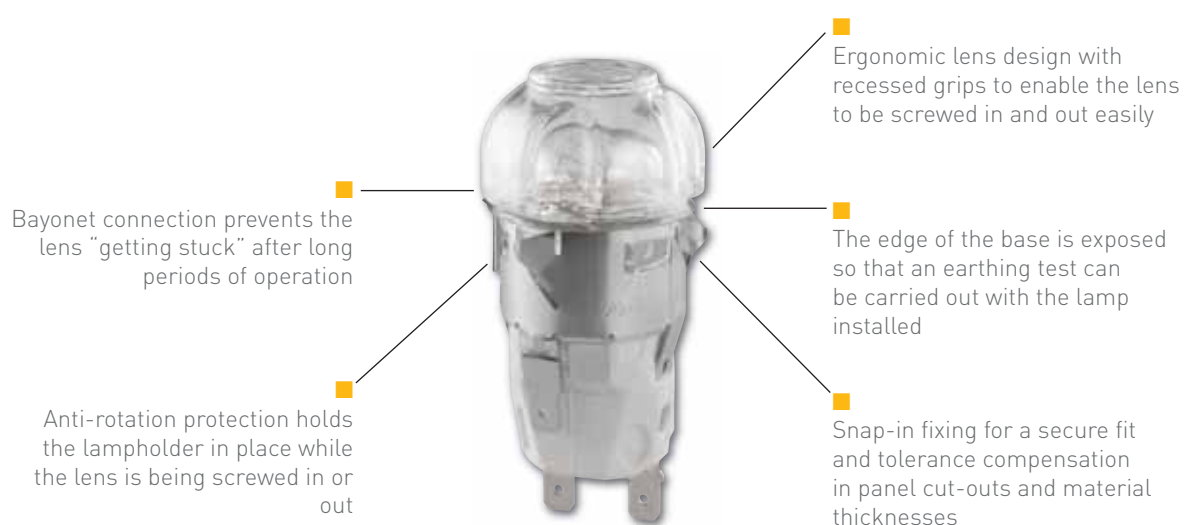


HOT

Oven lamps for round cut-outs \varnothing 35.5 mm with twist and release lens



New design and improved ergonomics: The BJB oven lamp assembly with twist and release lens



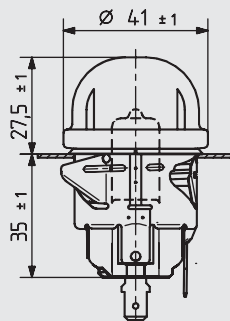
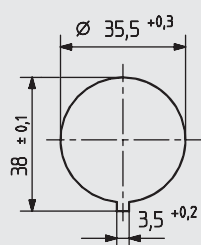
The new twist and release lens from BJB is equipped with a practical bayonet connection. A slight twist is enough to insert it firmly and securely into its holder. Advantage: It can easily be screwed out again to change the lamp, even after long periods of operation.

HOT

77.208

Oven lamps for round cut-outs $\varnothing 35.5$ mm with G9 halogen lamp

pkg. wt. part no.
50 93 g **77.208.7101.10**



Snap in fixing

Lens: soda-lime glass (hard glass) 350° C

Sleeve: CrNi

Lampholder: Steatite

Connection: Tab terminals vertical

Lamp: G9, 25W

- Also available with welded cables
- Lamps for other voltages on request
- cURus on request

Depth of embodiment for version with vertical tab terminals: + 12 mm (an allowance must be made for the corresponding connector)

T 350

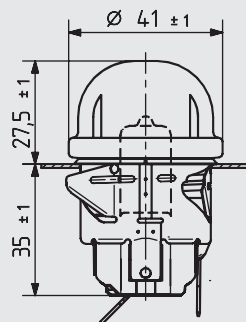
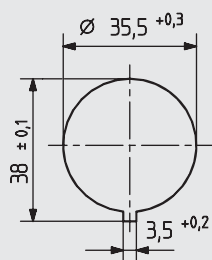


CAD

i

[00] 57...

pkg. wt. part no.
50 93 g **77.208.5101.10**



Snap in fixing

Lens: soda-lime glass (hard glass) 350° C

Sleeve: CrNi

Lampholder: Steatite

Connection: Tab terminals 45° angle

Lamp: G9, 25W

- Also available with welded cables
- Lamps for other voltages on request
- cURus on request

T 350

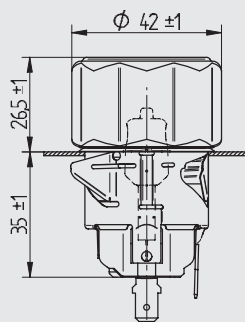
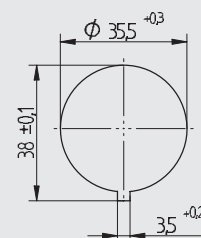


CAD

i

[00] 57...

pkg. wt. part no.
50 93 g **77.208.7401.10**



Snap in fixing

Lens: soda-lime glass (hard glass) 350° C

Sleeve: CrNi

Lampholder: Steatite

Connection: Tab terminals vertical

Lamp: G9, 25W

- Also available with welded cables
- Lamps for other voltages on request
- cURus on request

Depth of embodiment for version with vertical tab terminals: + 12 mm (an allowance must be made for the corresponding connector)

T 350



CAD

i

[00] 57...

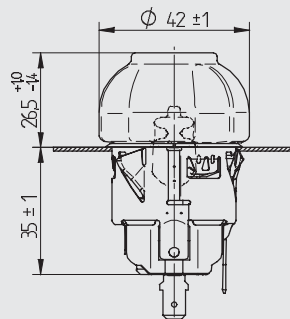
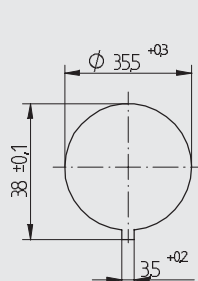
HOT

77.228

Oven lamps for round cut-outs \varnothing 35.5 mm with G9 halogen lamp



pkg.	wt.	part no.
50	95 g	77.228.1101.10



With twist and release lens
 Snap in fixing
 Lens: soda-lime glass (hard glass) 350° C
 Sleeve: CrNi
 Lampholder: Steatite
 Connection: Tab terminals vertical

Lamp: G9, 25W

- Also available with welded cables
- Lamps for other voltages on request
- cURus on request

Depth of embodiment for version with vertical tab terminals: + 12 mm (an allowance must be made for the corresponding connector)

T 350



G9, 25W, 230V



6.3 x 0.8



1.0 - 2.0

CAD

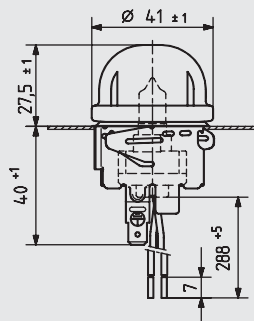
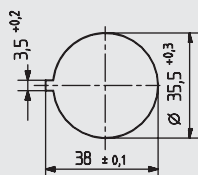
i

[00] 57...

HOT

77.912

Oven lamps for round cut-outs \varnothing 35.5 mm with G4 halogen lamp



pkg.	wt.	part no.
50	57 g	77.912.2105.10

Snap in fixing

Lens: soda-lime glass (hard glass) 350° C

Sleeve: CrNi

Lampholder: Steatite

Wires: PTFE (max. 250° C), Free cable length: 288 mm

Lamp: G4, 20W

- Other cable versions on request
- cURus on request

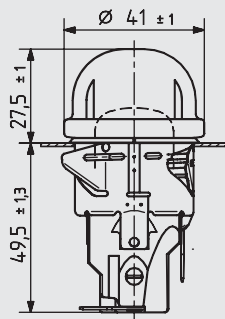
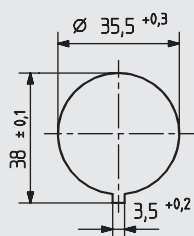


HOT

77.222

Oven lamps for round cut-outs $\varnothing 35.5$ mm with E14 Edison screw lamp

pkg. wt. part no.
50 87 g **77.222.1101.10**



Snap in fixing

Lens: soda-lime glass (hard glass) 350° C

Sleeve: CrNi

Lampholder: Porcelain

Connection: Tab terminals horizontal

Lamp: E14, 15W

- Lamps for other voltages on request
- cURus on request

T 300

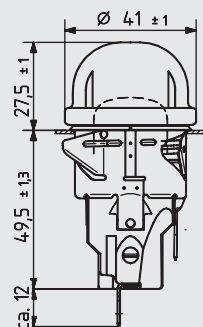
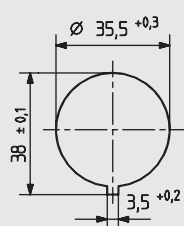
E14, 15 W,
230 - 240 V

CAD

i

[00] 57...

pkg. wt. part no.
50 87 g **77.222.2101.10**



Snap in fixing

Lens: soda-lime glass (hard glass) 350° C

Sleeve: CrNi

Lampholder: Porcelain

Connection: Tab terminals vertical

Lamp: E14, 15W

- Lamps for other voltages on request
- cURus on request

Depth of embodiment for version with vertical tab terminals: + 12 mm (an allowance must be made for the corresponding connector)

T 300

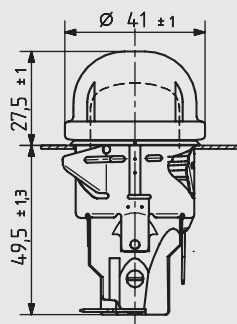
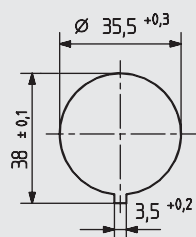
E14, 15 W,
230 - 240 V

CAD

i

[00] 57...

pkg. wt. part no.
50 87 g **77.222.1104.10**



Snap in fixing

Lens: soda-lime glass (hard glass) 350° C

Sleeve: CrNi

Lampholder: Porcelain

Connection: Tab terminals horizontal

Lamp: E14, 25W

- Lamps for other voltages on request
- cURus on request

T 300

E14, 25 W,
230 - 240 V

CAD

i

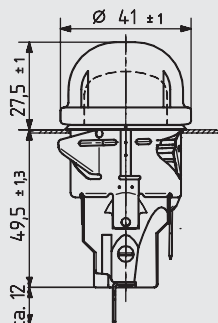
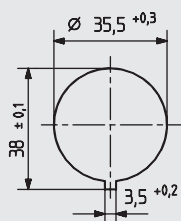
[00] 57...

HOT

77.222

Oven lamps for round cut-outs $\varnothing 35.5$ mm with E14 Edison screw lamp

pkg. wt. part no.
50 87 g **77.222.2104.10**



Snap in fixing

Lens: soda-lime glass (hard glass) 350° C

Sleeve: CrNi

Lampholder: Porcelain

Connection: Tab terminals vertical

Lamp: E14, 25W

- Lamps for other voltages on request
- cURus on request

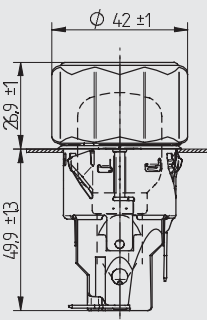
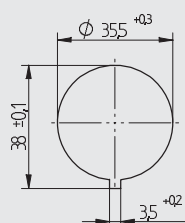
Depth of embodiment for version with vertical tab terminals: + 12 mm (an allowance must be made for the corresponding connector)

T 300



[00] 57...

pkg. wt. part no.
50 118 g **77.222.1404.10**



Snap in fixing

Lens: soda-lime glass (hard glass) 350° C

Sleeve: CrNi

Lampholder: Porcelain

Connection: Tab terminals horizontal

Lamp: E14, 25W

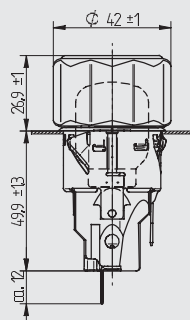
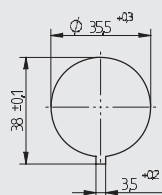
- Lamps for other voltages on request
- cURus on request

T 300



[00] 57...

pkg. wt. part no.
50 118 g **77.222.2404.10**



Snap in fixing

Lens: soda-lime glass (hard glass) 350° C

Sleeve: CrNi

Lampholder: Porcelain

Connection: Tab terminals vertical

Lamp: E14, 25W

- Lamps for other voltages on request
- cURus on request

Depth of embodiment for version with vertical tab terminals: + 12 mm (an allowance must be made for the corresponding connector)

T 300



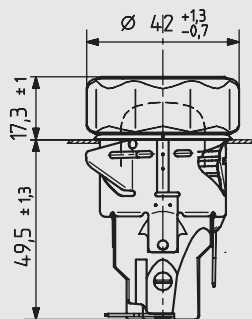
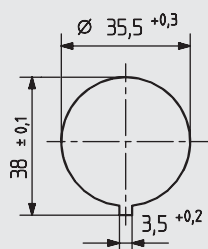
[00] 57...

HOT

77.222 77.226

Oven lamps for round cut-outs $\varnothing 35.5$ mm with E14 Edison screw lamp

pkg. wt. part no.
50 75 g **77.222.1201.10**



Snap in fixing

Lens: soda-lime glass (hard glass) 350° C

Sleeve: CrNi

Lampholder: Porcelain

Connection: Tab terminals horizontal

Lamp: E14, 15W

- Lamps for other voltages on request
- cURus on request

T 300

E14, 15 W,
230 - 240 V

6.3 x 0.8



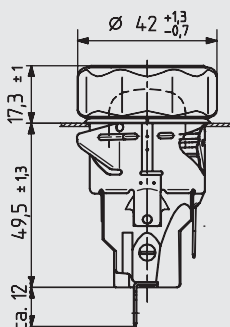
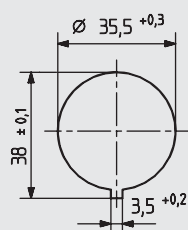
1.0 - 2.5

CAD

i

[00] 57...

pkg. wt. part no.
50 75 g **77.222.2201.10**



Snap in fixing

Lens: soda-lime glass (hard glass) 350° C

Sleeve: CrNi

Lampholder: Porcelain

Connection: Tab terminals vertical

Lamp: E14, 15W

- Lamps for other voltages on request
- cURus on request

Depth of embodiment for version with vertical tab terminals: + 12 mm (an allowance must be made for the corresponding connector)

T 300

E14, 15 W,
230 - 240 V

6.3 x 0.8



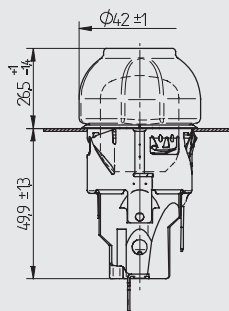
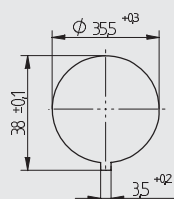
1.0 - 2.5

CAD

i

[00] 57...

pkg. wt. part no.
50 87 g **77.226.1104.10**



With twist and release lens

Snap in fixing

Lens: soda-lime glass (hard glass) 350° C

Sleeve: CrNi

Lampholder: Porcelain

Connection: Tab terminals vertical

Lamp: E14, 25W

- Lamps for other voltages on request
- cURus on request

Depth of embodiment for version with vertical tab terminals: + 12 mm (an allowance must be made for the corresponding connector)

T 300

E14, 25 W,
230 - 240 V

6.3 x 0.8



1.0 - 2.0

CAD

i

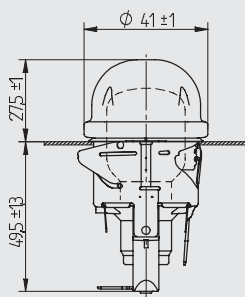
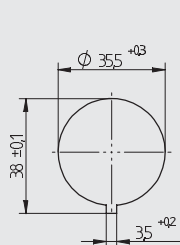
[00] 57...

HOT

77.225

Oven lamps for round cut-outs $\varnothing 35.5$ mm with E14 Edison screw lamp

pkg. wt. part no.
50 60 g **77.225.3104.10**



Snap in fixing

Lens: soda-lime glass (hard glass) 350° C

Sleeve: CrNi

Lampholder: LCP

Connection: Tab terminals horizontal

Lamp: E14, 25W

- Lamps for other voltages on request

T 270

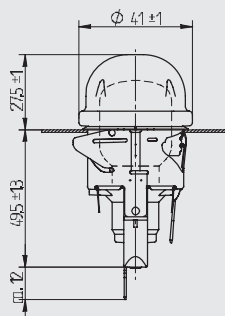
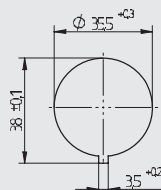
E14, 25 W
230 - 240 V

CAD

i

[00] 57...

pkg. wt. part no.
50 60 g **77.225.4104.10**



Snap in fixing

Lens: soda-lime glass (hard glass) 350° C

Sleeve: CrNi

Lampholder: LCP

Connection: Tab terminals vertical

Lamp: E14, 25W

- Lamps for other voltages on request

Depth of embodiment for version with vertical tab terminals: + 12 mm (an allowance must be made for the corresponding connector)

T 270

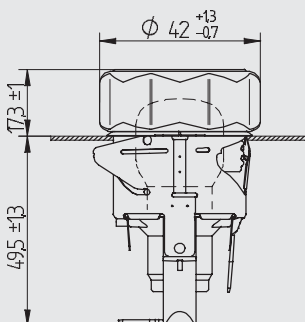
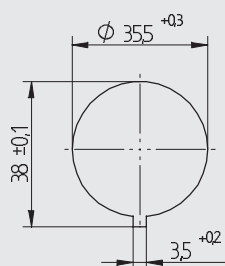
E14, 25 W
230 - 240 V

CAD

i

[00] 57...

pkg. wt. part no.
50 49 g **77.225.3201.10**



Snap in fixing

Lens: soda-lime glass (hard glass) 350° C

Sleeve: CrNi

Lampholder: LCP

Connection: Tab terminals horizontal

Lamp: E14, 15W

- Lamps for other voltages on request

T 270

E14, 15 W
230 - 240 V

CAD

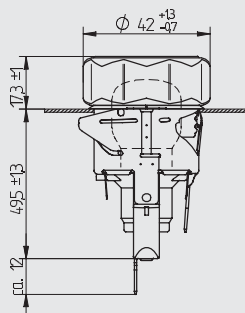
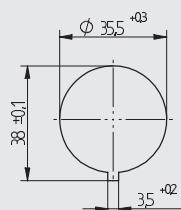
i

[00] 57...

HOT

77.225

Oven lamps for round cut-outs \varnothing 35.5 mm with E14 Edison screw lamp



pkg. wt. part no.
50 49 g **77.225.4201.10**

Snap in fixing
Lens: soda-lime glass (hard glass) 350° C
Sleeve: CrNi
Lampholder: LCP
Connection: Tab terminals vertical
Lamp: E14, 15W
• Lamps for other voltages on request

Depth of embodiment for version with vertical tab terminals: + 12 mm (an allowance must be made for the corresponding connector)

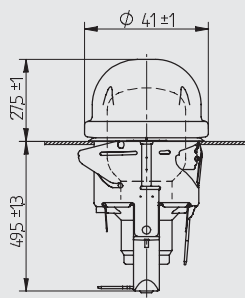
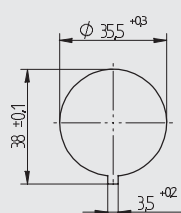
T 270



CAD

i

[00] 57...



pkg. wt. part no.
50 63 g **77.225.1104.10**

Snap in fixing
Lens: soda-lime glass (hard glass) 350° C
Sleeve: CrNi
Lampholder: PPS
Connection: Tab terminals horizontal
Lamp: E14, 25W
• Lamps for other voltages on request
• cURus on request

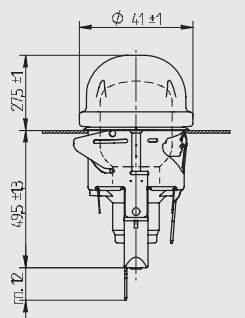
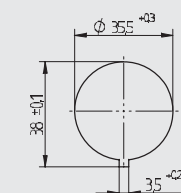
T 240



CAD

i

[00] 57...



pkg. wt. part no.
50 63 g **77.225.2104.10**

Snap in fixing
Lens: soda-lime glass (hard glass) 350° C
Sleeve: CrNi
Lampholder: PPS
Connection: Tab terminals vertical
Lamp: E14, 25W
• Lamps for other voltages on request
• cURus on request

Depth of embodiment for version with vertical tab terminals: + 12 mm (an allowance must be made for the corresponding connector)

T 240



CAD

i

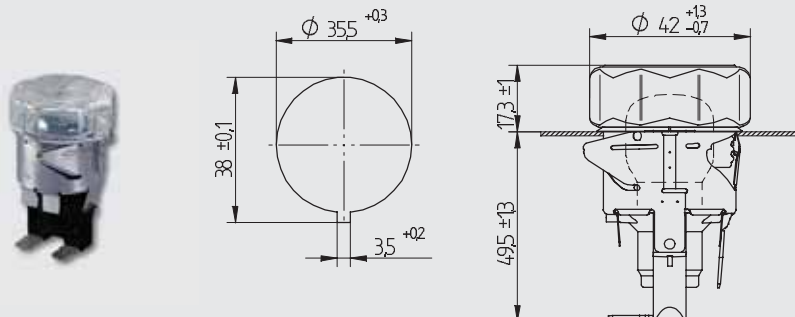
[00] 57...

HOT

77.225

Oven lamps for round cut-outs $\varnothing 35.5$ mm with E14 Edison screw lamp

pkg. wt. part no.
50 52 g **77.225.1201.10**



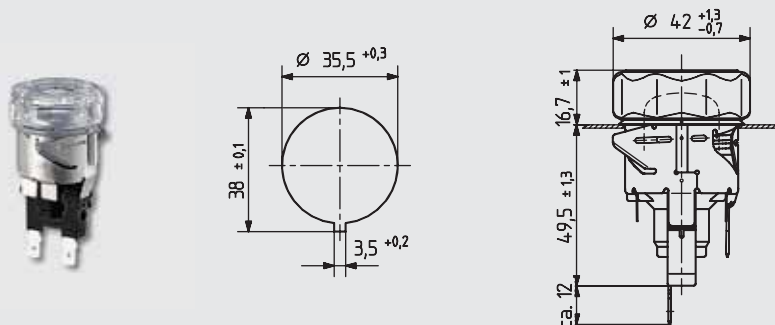
Snap in fixing
Lens: soda-lime glass (hard glass) 350° C
Sleeve: CrNi
Lampholder: PPS
Connection: Tab terminals horizontal

Lamp: E14, 15W

- Lamps for other voltages on request
- cURus on request



pkg. wt. part no.
50 52 g **77.225.2201.10**

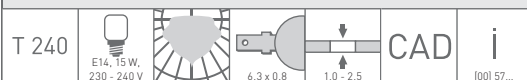


Snap in fixing
Lens: soda-lime glass (hard glass) 350° C
Sleeve: CrNi
Lampholder: PPS
Connection: Tab terminals vertical

Lamp: E14, 15W

- Lamps for other voltages on request
- cURus on request

Depth of embodiment for version with vertical tab terminals: + 12 mm (an allowance must be made for the corresponding connector)



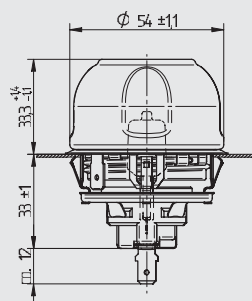
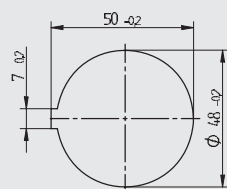
HOT

77.718

Oven lamps for round cut-outs \varnothing 48 mm with G9 halogen lamp



pkg.	wt.	part no.
144	93 g	77.718.7201.10



Snap in fixing

Lens: soda-lime glass (hard glass) 350° C

Fixing ring: CrNi / nickel plated steel

Lampholder: Steatite

Connection: Tab terminals vertical

Lamp: G9, 25W

- Also available with cables
- Lamps for other voltages on request
- cURus on request

Depth of embodiment for version with vertical tab terminals: + 12 mm (an allowance must be made for the corresponding connector)

T 350



CAD

i

[00] 57...

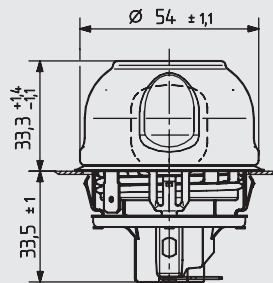
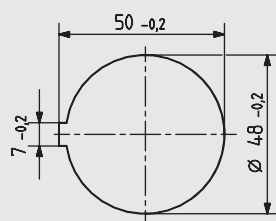
HOT

77.703 77.704

Oven lamps for round cut-outs \varnothing 48 mm with E14 Edison screw lamp



pkg. wt. part no.
144 111 g **77.703.1201.10**



Snap in fixing
Lens: soda-lime glass (hard glass) 350° C
Fixing ring: CrNi, nickel plated steel
Lampholder: Porcelain
Connection: Tab terminals horizontal

Lamp: E14, 15W

- Lamps for other voltages on request
- cURus on request

T 300

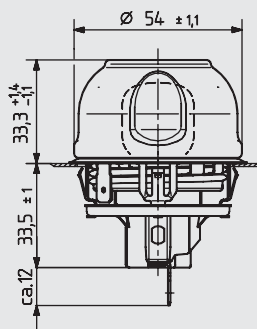
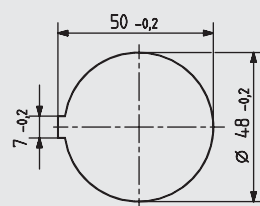


CAD

i

[00] 57...

pkg. wt. part no.
144 111 g **77.703.2201.10**



Snap in fixing
Lens: soda-lime glass (hard glass) 350° C
Fixing ring: CrNi, nickel plated steel
Lampholder: Porcelain
Connection: Tab terminals vertical

Lamp: E14, 15W

- Lamps for other voltages on request
- cURus on request

Depth of embodiment for version with vertical tab terminals: + 12 mm (an allowance must be made for the corresponding connector)

T 300

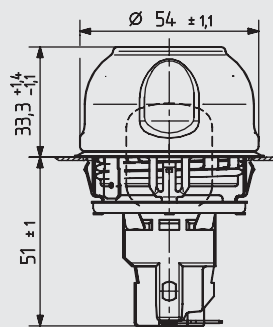
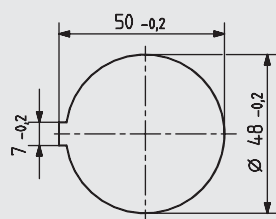


CAD

i

[00] 57...

pkg. wt. part no.
144 112 g **77.704.3204.10**



Snap in fixing
Lens: soda-lime glass (hard glass) 350° C
Fixing ring: CrNi, nickel plated steel
Lampholder: Porcelain

Connection: Tab terminals horizontal

Lamp: E14, 25W

- Lamps for other voltages on request
- cURus on request

T 300



CAD

i

[00] 57...

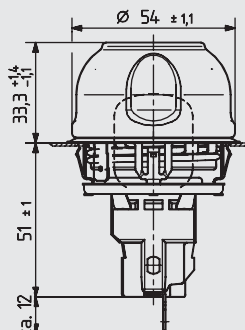
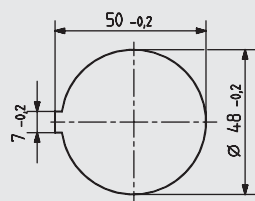
HOT

77.704

Oven lamps for round cut-outs \varnothing 48 mm with E14 Edison screw lamp



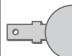



pkg.	wt.	part no.
144	112 g	77.704.4204.10



Snap in fixing
 Lens: soda-lime glass (hard glass) 350° C
 Fixing ring: CrNi, nickel plated steel
 Lampholder: Porcelain
 Connection: Tab terminals vertical
Lamp: E14, 25W
 • Lamps for other voltages on request
 • cURus on request

Depth of embodiment for version with vertical tab terminals: + 12 mm (an allowance must be made for the corresponding connector)

T 300	 E14, 25 W, 230 - 240 V		 6.3 x 0.8	 1.0 - 2.0	CAD	i [00] 57...
-------	--	---	--	--	-----	-----------------

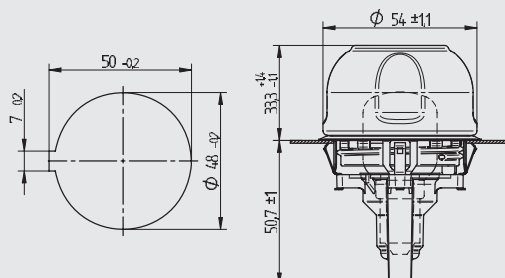
HOT

77.904

Oven lamps for round cut-outs \varnothing 48 mm with E14 Edison screw lamp



pkg. wt. part no.
144 84 g **77.904.5204.10**



Snap in fixing
Lens: soda-lime glass (hard glass) 350° C
Fixing ring: CrNi
Lampholder: LCP
Connection: Tab terminals horizontal
Lamp: E 14, 25W
• Lamps for other voltages on request

T 270

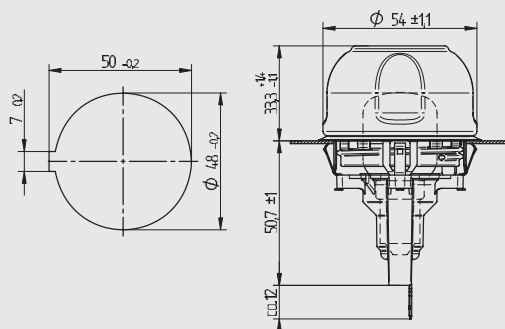


CAD

i

[00] 57...

pkg. wt. part no.
144 84 g **77.904.6204.10**



Snap in fixing
Lens: soda-lime glass (hard glass) 350° C
Fixing ring: CrNi
Lampholder: LCP
Connection: Tab terminals: vertical
Lamp: E 14, 25W
• Lamps for other voltages on request

Depth of embodiment for version with vertical tab terminals: + 12 mm (an allowance must be made for the corresponding connector)

T 270



CAD

i

[00] 57...

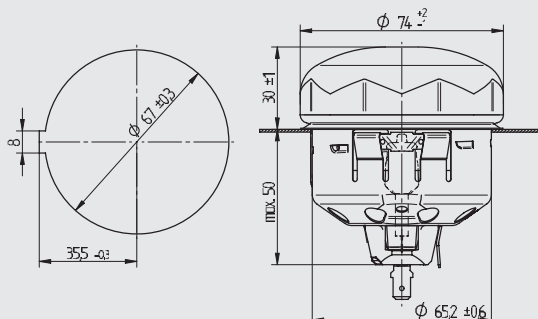
HOT

77.943

Oven lamps for round cut-outs $\varnothing 67$ mm with G9 halogen lamp



pkg. wt. part no.
112 170 g **77.943.1101.12**



Depth of embodiment for version with vertical tab terminals: + 12 mm (an allowance must be made for the corresponding connector)

Snap in fixing

Lens: soda-lime glass (hard glass) 350° C

Housing: Steel aluminised

Lampholder: Steatite

Connection: Tab terminals vertical

Lamp: G9, 25W

- Lamps for other voltages on request

T 350

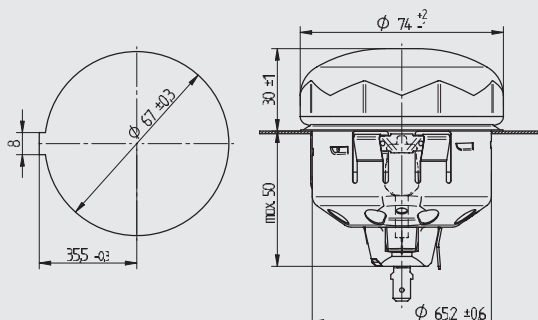


CAD

i

[00] 57...

pkg. wt. part no.
112 170 g **77.943.1103.12**



Depth of embodiment for version with vertical tab terminals: + 12 mm (an allowance must be made for the corresponding connector)

Snap in fixing

Lens: soda-lime glass (hard glass) 350° C

Housing: Steel aluminised

Lampholder: Steatite

Connection: Tab terminals vertical

Lamp: G9, 40W

- Lamps for other voltages on request

T 350



CAD

i

[00] 57...

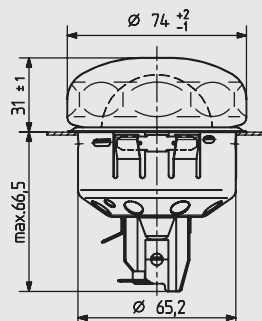
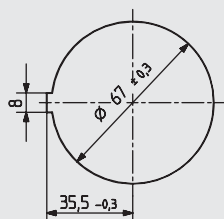
HOT

77.906

Oven lamps for round cut-outs $\varnothing 67$ mm with E14 Edison screw lamp



pkg.	wt.	part no.
14	187 g	77.906.0001.72



Snap in fixing

Lens: soda-lime glass (hard glass) 350° C

Housing: Steel aluminised

Lampholder: Porcelain

Connection: Tab terminals horizontal

Lamp: E14, 40W

- Lamps for other voltages on request
- cURus on request

T 300



E14, 40W
240 V



CAD

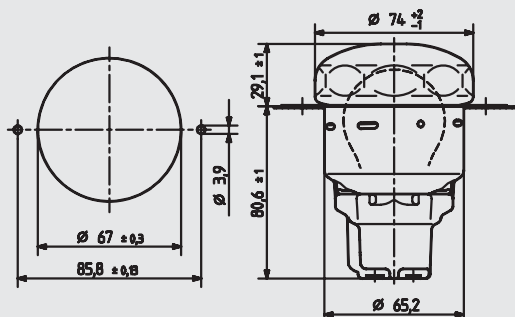
i

[00] 57...

HOT

77.928 77.926

Oven lamps for round cut-outs $\varnothing 67$ mm with E26 Edison screw lamp



pkg. wt. part no.
252 207 g **77.928.8108.23**

Screw fixing

Lens: soda-lime glass (hard glass) 350° C

Housing: Steel aluminised

Lampholder: Porcelain

Connection: Tab terminals horizontal

Approval: cURus

Lamp: E26, 40W - Medium Base

- Tab terminal: 6.3 x 0.8 mm for side contact, 4.8 x 0.8 mm for centre contact
- Lamps for other voltages on request

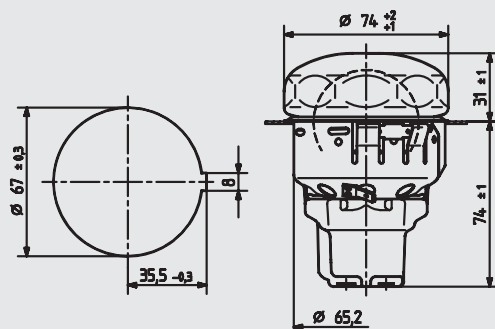
T 300



CAD

i

[00] 57...



pkg. wt. part no.
112 199 g **77.926.8108.18**

Snap in fixing

Lens: soda-lime glass (hard glass) 350° C

Housing: Steel aluminised

Lampholder: Porcelain

Connection: Tab terminals horizontal

Approval: cURus

Lamp: E26, 40W - Medium Base

- Tab terminal: 6.3 x 0.8 mm for side contact, 4.8 x 0.8 mm for centre contact
- Lamps for other voltages on request

T 300



CAD

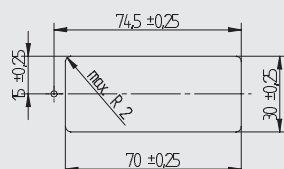
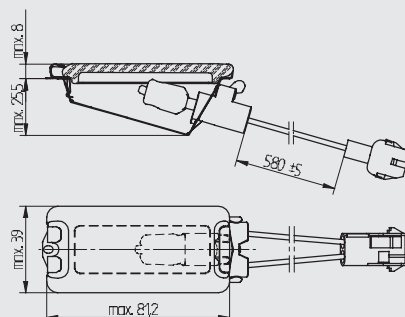
i

[00] 57...

HOT

77.945 77.946

Oven lamps for rectangular cut-outs 30 x 70 mm with G9 halogen lamp



pkg. wt. part no.
56 87 g **77.945.4116.23**

Screw fixing

Lens: borosilicate glass 550° C

Reflector: Steel aluminised

Lampholder: Steatite

Wires: 18 AWG, Glass fibre (max. 450° C), Free cable length: 580 mm

Approval: cURus

Lamp: G9, 25W

- Other cable versions on request.
- Lamps for other voltages on request

T 350



G9, 25W, 120V



1.0 - 1.6



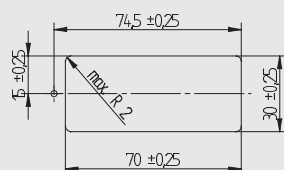
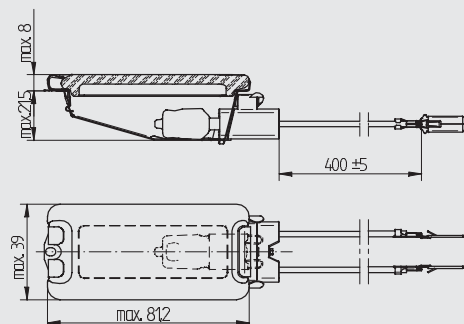
clean



CAD



[00] 57...



pkg. wt. part no.
56 82 g **77.946.4116.23**

Screw fixing

Lens: borosilicate glass 550° C

Reflector: Steel aluminised

Lampholder: Steatite

Wires: Glass fibre (max. 450° C), Free cable length: 400 mm

Approval: cURus

Lamp: G9, 25W

- Other cable versions on request.
- Lamps for other voltages on request

T 350



G9, 25W, 120V



1.0 - 1.6



clean



CAD

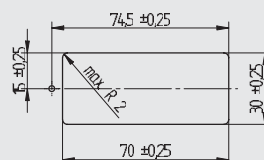
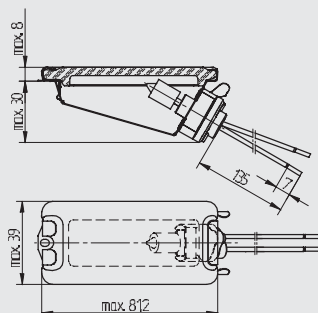


[00] 57...

HOT

77.935

Oven lamps for rectangular cut-outs 30 x 70 mm with G4 halogen lamp



pkg. wt. part no.
144 81 g **77.935.5101.23**

Screw fixing

Lens: borosilicate glass 550° C

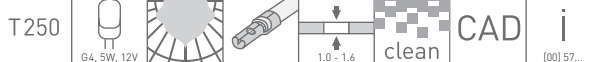
Reflector: Steel aluminised

Lampholder: Ceramic

Wires: PTFE (max. 250° C), Free cable length: 135 mm

Lamp: G4, 5W

- With AMP plug no.1-480698-0 and AMP contact no. 350536-1
- Other cable versions on request
- cURus on request



Rectangular oven lamp assemblies from BJB combine many advantages.

High quality reflector for high light output. Resistant to high temperature, discolouration, corrosion and oxidation

Tried and tested connector for earthing the light fitting

Tried and tested lampholder, designed for high temperatures (e.g. T350 for G9 halogen lamps), materials resistant to high temperatures (porcelain and steatite)



BJB-specific lens holder for a secure fit and easy replacement


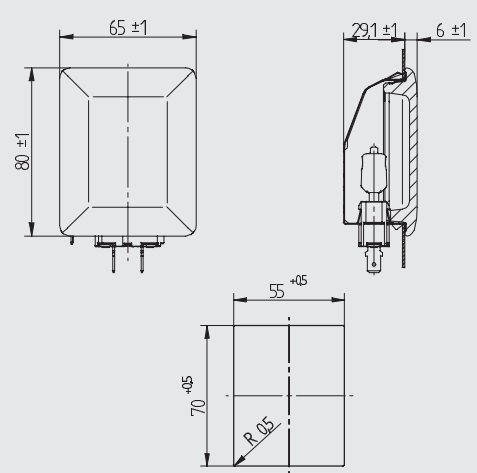
Retaining springs for tolerance compensation in case of variations in the thickness of the material of the panel cut-out. Prevents possible loose fit of the light fitting in the oven housing

HOT

77.638 77.708
77.228

Oven lamps for rectangular cut-outs 55 x 70 mm with G9 halogen lamp





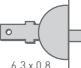



pkg.	wt.	part no.
48	125 g	77.638.2101.23

Snap in fixing
 Lens: borosilicate glass 550° C
 Reflector: Steel aluminised
 Lampholder: Steatite
 Connection: Tab terminals vertical
Lamp: G9, 25W

- Also available with welded cables
- Lamps for other voltages on request
- cURus on request

T 350

6.3 x 0.8


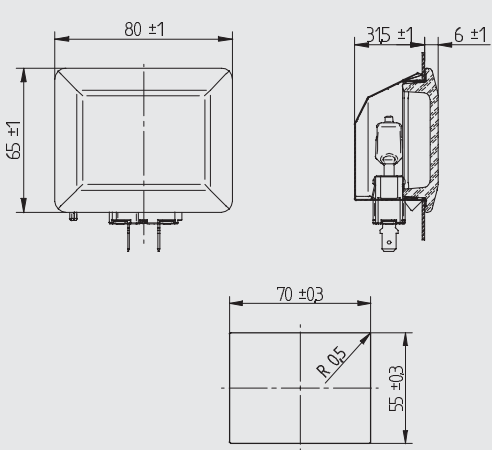
0.8 - 1.3

clean

CAD

i

[00] 57



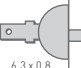



pkg.	wt.	part no.
144	122 g	77.708.7101.23

Snap in fixing
 Lens: borosilicate glass 550° C
 Reflector: Steel aluminised
 Lampholder: Steatite
 Connection: Tab terminals vertical
Lamp: G9, 25W

- Also available with welded cables
- Lamps for other voltages on request
- cURus on request

T 350

6.3 x 0.8


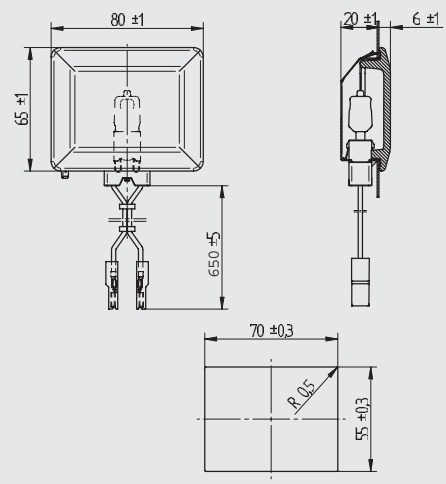
1.0 - 2.0

clean

CAD

i

[00] 57







pkg.	wt.	part no.
112	122 g	77.728.4101.23

Snap in fixing
 Lens: borosilicate glass 550° C
 Reflector: Steel aluminised
 Lampholder: Steatite
 Wires: PTFE (max. 250° C), Free cable length: 650 mm
Lamp: G9, 25W

- Lamps for other voltages on request

T 350

1.0 - 2.0

clean

CAD

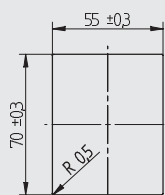
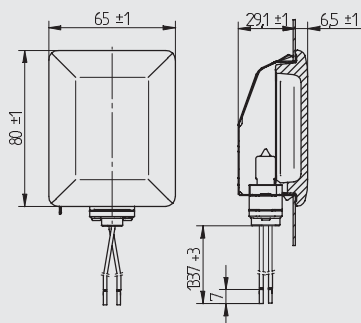
i

[00] 57

HOT

77.632 77.707

Oven lamps for rectangular cut-outs 55 x 70 mm with G4 halogen lamp



pkg. wt. part no.
120 110 g **77.632.5102.23**

Snap in fixing

Lens: borosilicate glass 550° C

Reflector: Steel aluminised

Lampholder: Steatite

Wires: PTFE (max. 250° C), Free cable length: 1337 mm

Lamp: G4, 20W

- Other cable versions on request.

T 300



G4, 20W, 12V

0.8 - 1.3

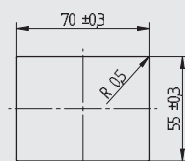
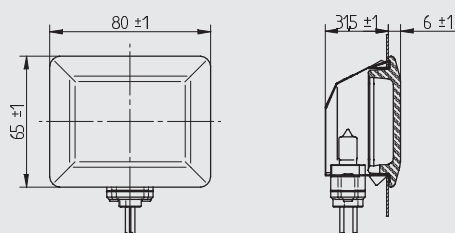
clean

CAD

i

[00] 57...

pkg. wt. part no.
75 110 g **77.707.1102.23**



Snap in fixing

Lens: borosilicate glass 550° C

Reflector: Steel aluminised

Lampholder: Steatite

Wires: PTFE (max. 250° C), Free cable length: 147 mm

Lamp: G4, 20W

- Other cable versions on request
- cURus on request

T 250



G4, 20W, 12V

1.0 - 2.0

clean

CAD

i

[00] 57...

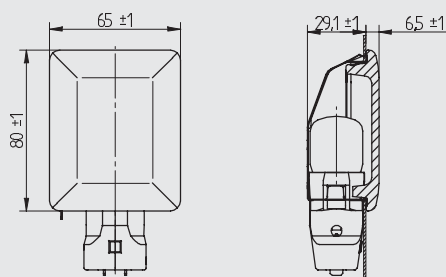
HOT

77.630 77.705

Oven lamps for rectangular cut-outs 55 x 70 mm with E14 Edison screw lamp



pkg. wt. part no.
120 138 g **77.630.3104.23**



Snap in fixing

Lens: borosilicate glass 550° C

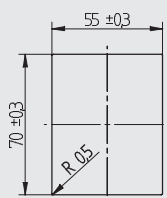
Reflector: Steel aluminised

Lampholder: Steatite

Connection: Tab terminals vertical

Lamp: E14, 25W

- Lamps for other voltages on request
- cURus on request



T 300

E14, 25 W,
230 - 240 V

6.3 x 0.8



0.8 - 1.3



clean



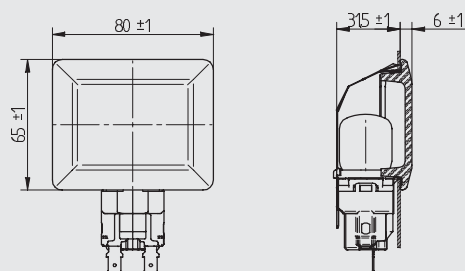
CAD



i

[00] 57...

pkg. wt. part no.
126 138 g **77.705.2104.23**



Snap in fixing

Lens: borosilicate glass 550° C

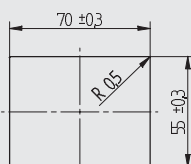
Reflector: Steel aluminised

Lampholder: Steatite

Connection: Tab terminals vertical

Lamp: E14, 25W

- Lamps for other voltages on request
- cURus on request



T 300

E14, 25 W,
230 - 240 V

6.3 x 0.8



1.0 - 2.0



clean



CAD



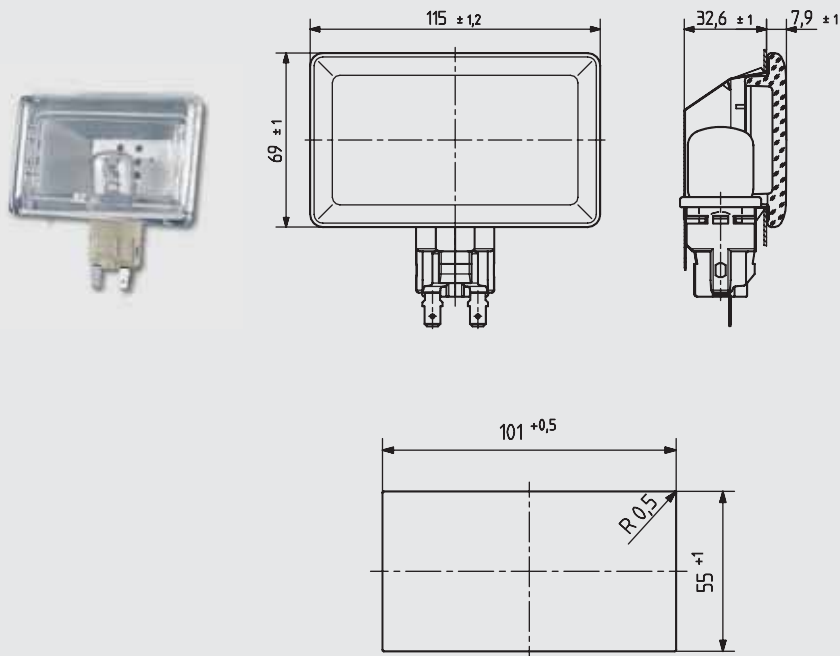
i

[00] 57...

HOT

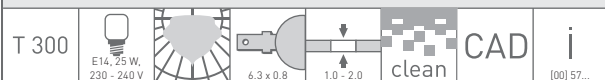
77.722

Oven lamps for rectangular cut-outs 101 x 55 mm with E14 Edison screw lamp



pkg.	wt.	part no.
60	205 g	77.722.2104.23

Snap in fixing
 Lens: borosilicate glass 550°C
 Reflector: Steel aluminised
 Lampholder: Porcelain
 Connection: Tab terminals vertical
Lamp: E14, 25W
 • Lamps for other voltages on request



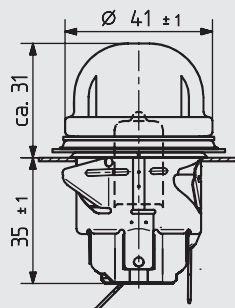
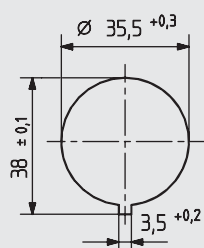
HOT

77.208

For steam proof applications



pkg. wt. part no.
25 83 g **77.208.5181.10**



Lens: soda-lime glass (hard glass) 350° C
Sleeve: CrNi
Lampholder: Steatite
Connection: Tab terminals 45° angle

Lamp: G9, 25W

- Versions with G4 or E14 lamps and cURus on request
- Lamps for other voltages on request
- Gasket: silicone, temperature resistant up to 300° C, (hardness approx. 55 G Shore A), 100% dampness
- Also available with welded cables



Exploded view of system

Shown here with PPS lampholder



Example of application



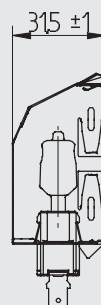
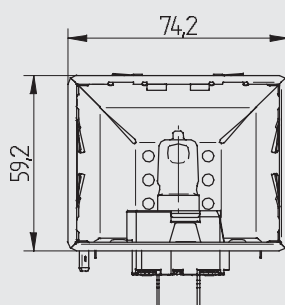
HOT

77.708

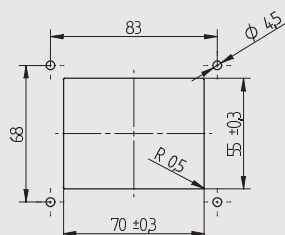
For steam proof applications



pkg. wt. part no.
144 47 g **77.708.U111.23**



Snap in fixing
Reflector: Steel aluminised
Lampholder: Steatite
Connection: Tab terminals vertical
Lamp: G9, 25W
• Versions with G4 or E14 lamps and cURus on request
• Lamps for other voltages on request
• Also available with welded cables
Find accessories on page: [00] 40



T 350



G9, 25W, 230V

6.3 x 0.8

1.0 - 2.0

CAD

i

[00] 57...

Example of application with G4 lamp

Housing 77.707.U103
Gasket 77.705.-701
Lens 78.707.-501
Frame 78.707.-101



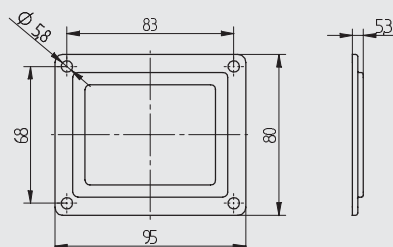
HOT

78.707 77.705

Accessories for lamp 77.708.U111



pkg.	wt.	part no.
50	20 g	78.707.-101.10

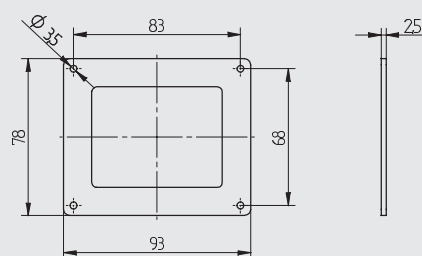


Frame for steam proof applications
Screw fixing
Material: CrNi

CAD i

[00] 57...

pkg.	wt.	part no.
50	12 g	77.705.-701.00

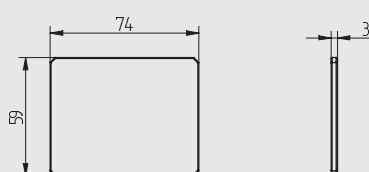


Gasket
Material: Silicone, (hardness approx. 50 G Shore A),
temperature resistant up to 300° C, steam proof

CAD i

[00] 57...

pkg.	wt.	part no.
50	33 g	78.707.-501.00



Protective glass, crystal clear
Material: Neoceran up to 800° C
• High resistance to thermal shock

CAD i

[00] 57...

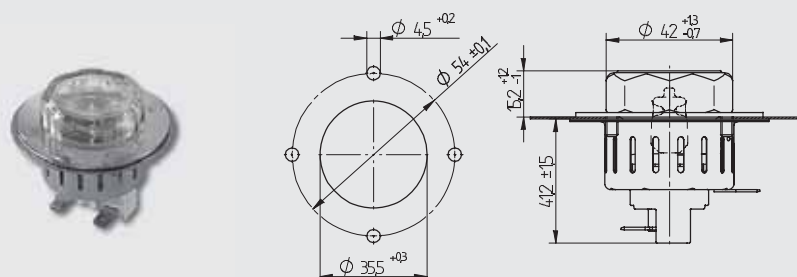
HOT

77.948

Lighting for combined ovens and microwaves



pkg.	wt.	part no.
16	104 g	77.948.1201.21



Microwave lighting
Screw fixing
Lens: soda-lime glass (hard glass) 350° C
Sleeve: CrNi
Lampholder: Ceramic
Connection: Tab terminals horizontal
Lamp: G9, 25W
• Lamps for other voltages on request



Exploded view of system



Example of application





Here Nicole and Dennis are preparing the starter for our perfect dinner on a well-illuminated work surface. In this case, the light sources are integrated directly into the cooker hood. For this purpose, BJB supplies both ready-to-install products and other components for all types of light source.

Hot: Light fittings for cooker hoods.



The possible applications for lighting solutions in cooker hoods are extremely varied. In addition to the snap-in recessed light fittings shown below, there are many other components from our range which can be used.



In our main catalogue you will find many lampholders which are suitable for these purposes. With components for general service incandescent lamps, for fluorescent/compact fluorescent lamps, for halogen lamps and for LEDs. Developers can give free rein to their imaginations.

Specifically for the changeover from general service incandescent lamps to alternative lighting solutions, we offer our lampholder adapter 25.934.-331 for G9 lamps. This practical product is very easy and quick to use and there is no need to make changes to the basic design.

All in all, the numerous BJB components provide our customers with a modular system with which they can realise a conceivable solution.

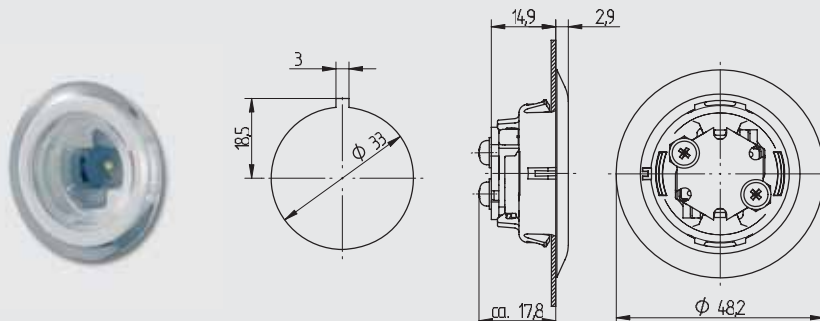
HOT

73.101 77.404

Lighting for cooker hoods with LED or G9 lamp



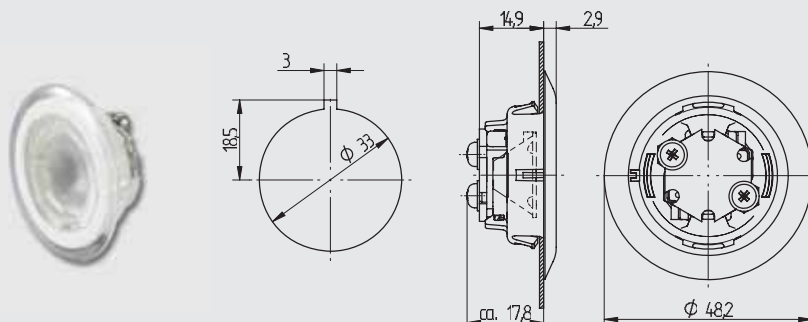
pkg. wt. part no.
250 11 g **73.101.1000.50**



Recessed LED lighting
Snap in fixing
Cover: PC
Housing: PC
• Without lens
• With LED-STARboard Philips Lumileds Luxeon® Rebel
• Special model. For availability please contact BJB.

T 110 0.5 mm² 0.5 mm² 2A 60VDC CAD i [00] 57...

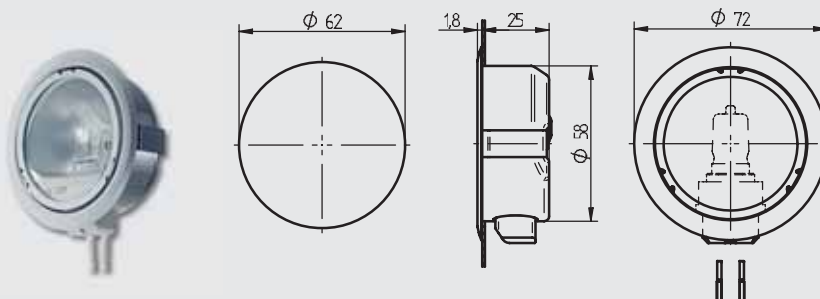
pkg. wt. part no.
250 14 g **73.101.1001.50**



Recessed LED lighting
Snap in fixing
Cover: PC
Housing: PC
• With lens (20 mm, 35°, frosted)
• With LED-STARboard Philips Lumileds Luxeon® Rebel
• Special model. For availability please contact BJB.

T 110 0.5 mm² 0.5 mm² 2A 60VDC CAD i [00] 57...

pkg. wt. part no.
48 89 g **77.404.1001.10**



Cooker hood lighting
Snap in fixing
Lens: Float glass 300° C
Housing: CrNi
Reflector: Steel aluminised
Lampholder: Steatite
Wires: FEP, oil resistant
Approval: cURus
Lamp: G9, 25W
• Lamps for other voltages on request


T 250 G9, 25W, 120V 0.6 - 1.0 CAD i [00] 57...

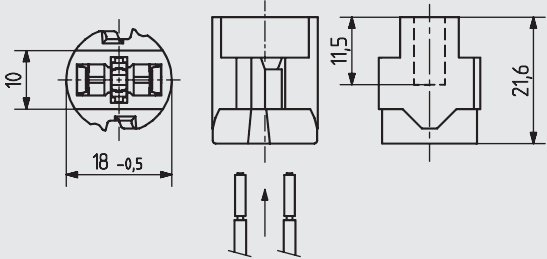
HOT

25.834 25.934

Lampholders for cooker hood lighting for lamps G9









pkg. wt. part no.
500 7 g **25.834.1000.00**

Lampholder
Bayonet fixing into adapter 25.934...
Housing: Ceramic / LCP
Contacts: CrNi
Approval: additional cULus

- Wires permanently joined after insertion
- Requirements of standards, regulations or protection class II are achieved by combination of lampholder with insulating cap.

T 250




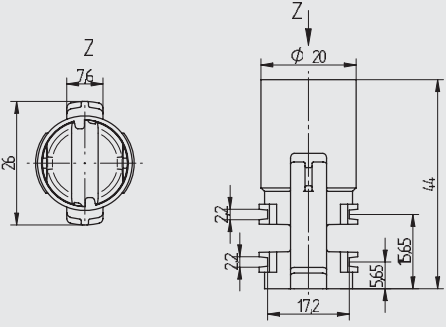


2 A
250 V

CAD

i
[00] 57...





pkg. wt. part no.
500 5 g **25.934.-331.80**

Lampholder adapter for G9 lampholder 25.934.1000
Housing: PET

250°C

CAD

i
[00] 57...



As you can see here, good housekeeping also requires clean dishes. This process is made visible with BJB lighting solutions for dishwashers. In addition to the actual lighting technology, moisture and strong mechanical stresses present further challenges for BJB to overcome in the development of these products.

Wet: Lighting solutions for washing machines, driers and dishwashers.



Even in dishwashers, washing machines and driers, one would like to see what is happening. For this reason, lighting systems are also being employed to an increasing extent in these appliances. We frequently use LED technology here, but also offer a system for general service incandescent lamps.



Washing machines and driers present special challenges because the lighting system does not only have to be resistant to moisture and humidity, but also has to withstand strong vibrations during operation. Simple materials are not suitable for such applications. Reliable, durable products can only be developed when first-class components and materials are used. This has always been our policy at BJB and remains so today.



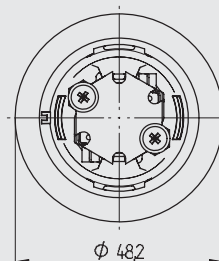
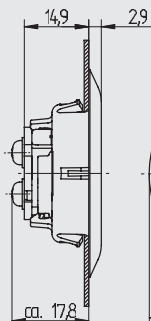
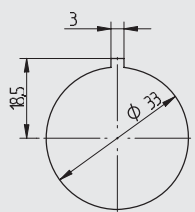
WET

73.101

Lighting for tumble dryers with LED



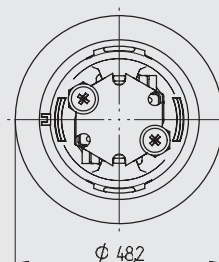
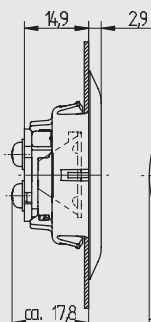
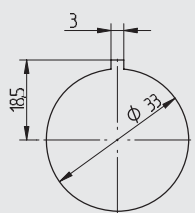
pkg. wt. part no.
250 11 g **73.101.1000.50**



- Recessed LED lighting
Snap in fixing
Cover: PC
Housing: PC
- Without lens
 - With LED-STARboard Philips Lumileds Luxeon® Rebel
 - Special model. For availability please contact BJB.

T 110 2A 60VDC i [00] 57...

pkg. wt. part no.
250 14 g **73.101.1001.50**



- Recessed LED lighting
Snap in fixing
Cover: PC
Housing: PC
- With lens (20 mm, 35°, frosted)
 - With LED-STARboard Philips Lumileds Luxeon® Rebel
 - Special model. For availability please contact BJB.


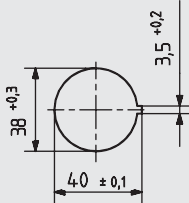
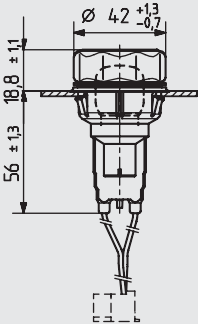
T 110 2A 60VDC i [00] 57...



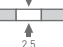
WET

77.401

Lighting for tumble dryers with Edison screw lamp



			pkg. 80 wt. 48 g part no. 77.401.1202.50
			<p>Snap in fixing</p> <p>Lens: soda-lime glass (hard glass) 350° C</p> <p>Gasket: Silicone, (hardness approx. 60 G Shore A), temperature resistant up to 250° C</p> <p>Lampholder: PBT</p> <p>Lamp: E14, 15W</p> <ul style="list-style-type: none"> • Wire with Rast2.5 connector • Lamps for other voltages on request • Other cable versions on request • cURus on request

T 150	 E14, 15W 230 - 240 V		 2,5	CAD	i [00] 57...
-------	--	---	--	-----	-----------------



No refrigerator without light. But nowadays a single light is often no longer enough. Particularly in the case of large appliances, it is preferable to use several light sources. In this way, everything is evenly illuminated and with an appropriate colour temperature. With its wide range of products, BJB offers suitable components for all requirements, from general service incandescent lamps to innovative LED technology.

Cold: Lighting solutions for refrigerators and freezers.



Example with designation of cooling zones by means of LED background lighting



Refrigerators and freezers contain many different things. Dairy products, meat, fruit, vegetables and drinks, to name but a few. In this case, as well as even illumination, the colour rendering quality is also important. To achieve good values here, general service incandescent lamps, halogen lamps or LEDs can be used. In certain cases it may even make sense to equip different zones with their own light fittings and also to use different types of light source.

Today, LEDs are in the top category of lighting solutions for refrigerators, and there are many different versions available in a wide variety of colour temperatures. Halogen lamps are popular due to their long service life, good light quality and high energy efficiency. Especially in small appliances, general service incandescent lamps are an economical solution.



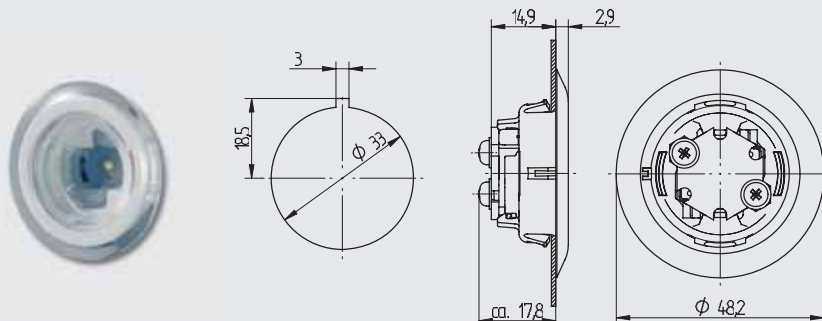
COLD

73.101

Refrigerator lamps with LED



pkg. wt. part no.
250 11 g **73.101.1000.50**

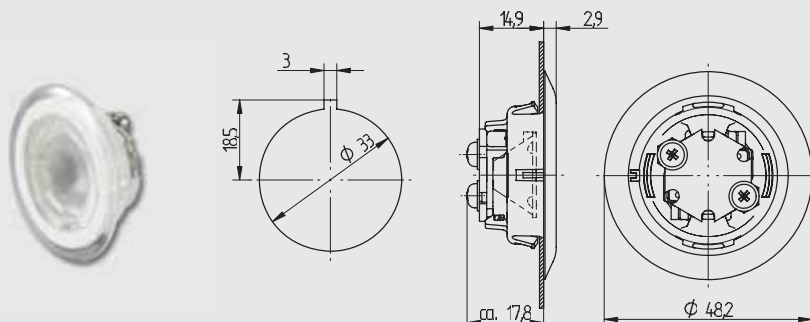


Recessed LED lighting
Snap in fixing
Cover: PC
Housing: PC

- Without lens
- With LED-STARboard Philips Lumileds Luxeon® Rebel
- Special model. For availability please contact BJB.

T 110				2A 60VDC		CAD	i
	0.5 mm ²	0.5 mm ²		2.0 - 2.5			[00] 57...

pkg. wt. part no.
250 14 g **73.101.1001.50**



Recessed LED lighting
Snap in fixing
Cover: PC
Housing: PC

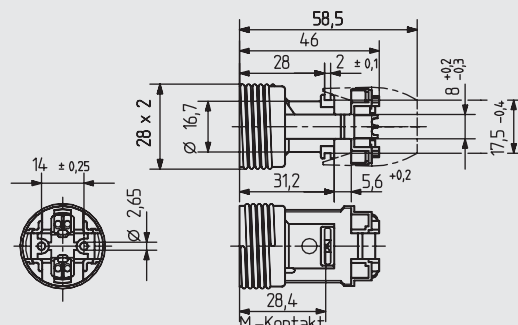
- With lens (20 mm, 35°, frosted)
- With LED-STARboard Philips Lumileds Luxeon® Rebel
- Special model. For availability please contact BJB.

T 110				2A 60VDC		CAD	i
	0.5 mm ²	0.5 mm ²		2.0 - 2.5			[00] 57...

COLD

22.225 22.230

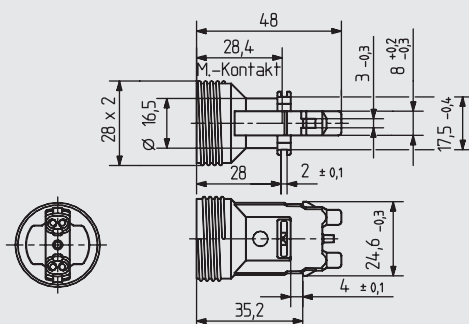
Lampholders for refrigerators for E14 Edison screw lamp



pkg. wt. part no.
500 6 g **22.225.3900.51**

Snap in fixing
Push in fixing
Screw fixing
Housing: PET
• T -25 / T 210
• Creepage current test PTI 250
• Screw fixing: for self-tapping screws with locating groove ISO 1481 - ST 2.9 - F / ISO 4753 - SC
Find accessories on page: [10] 23, [10] 24, [10] 27

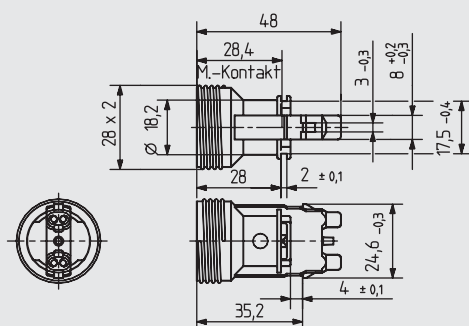
T -25					CAD	i
T 210		0.5 - 1.5 mm ²	max. ø 1.8 mm	0.5 - 1.5 mm ²		[00] 57...



pkg. wt. part no.
500 11 g **22.230.3700.51**

Snap in fixing
Push in fixing
Housing: PET
• T -25 / T 190
• Creepage current test PTI 250
Find accessories on page: [10] 27

T -25					CAD	i
T 190		0.5 - 1.5 mm ²	max. ø 1.8 mm	0.5 - 1.5 mm ²		[00] 57...



pkg. wt. part no.
500 10 g **22.230.3770.51**

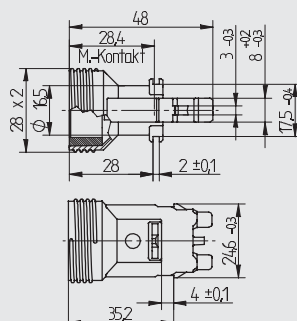
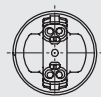
Snap in fixing
Push in fixing
Housing: PET
• T-25 / T190
• Creepage current test PTI 250
• Increased wall thickness 2 mm according to IEC 60335
Find accessories on page: [10] 27

T -25					CAD	i
T 190		0.5 - 1.5 mm ²	max. ø 1.8 mm	0.5 - 1.5 mm ²		[00] 57...

COLD

22.230 22.234

Lampholders for refrigerators for E14 Edison screw lamp



pkg.	wt.	part no.
500	12 g	22.230.3790.51

With gasket according to IEC 60079-15

Snap in fixing

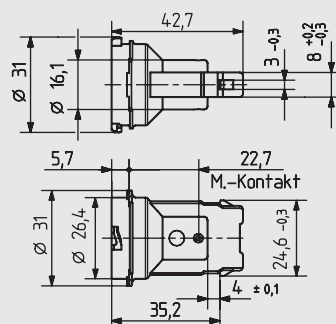
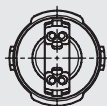
Push in fixing

Housing: PET

- T-25 / T190
- Creepage current test PTI 250

Find accessories on page: [10] 27

T -25 T 190				CAD	i
	0.5 - 1.5 mm²	max. ø 1.8 mm	0.5 - 1.5 mm²		[00] 57



pkg.	wt.	part no.
500	10 g	22.234.3700.51

Bayonet fixing

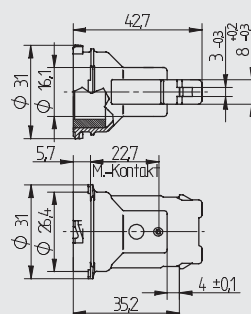
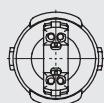
Snap in fixing

Housing: PET

- T -25 / T 190
- Creepage current test PTI 250

Find accessories on page: [10] 25

T-25 T 190					CAD	i
		0.5 - 1.5 mm²	max. ø 18 mm	0.5 - 1.5 mm²		[00] 57



pkg.	wt.	part no.
500	12 g	22.234.3790.51

With gasket according to IEC 60079-15


Snap in fixing

Bayonet fixing

Housing: PET

- T-25 / T190
- Creepage current test PTI 250

Find accessories on page: [10] 25

T -25 T 190					CAD	i
		0.5 - 1.5 mm²	max. ø 1.8 mm	0.5 - 1.5 mm²		[00] 57...

A perfect dinner to the end. With BJB lighting solutions for domestic appliances

Our four amateur cooks are enjoying the "perfect dinner" with visible satisfaction. And along the way you have learnt quite a lot about our products and systems for illuminating domestic appliances.

But perhaps you have other requests? Or some questions remain unanswered? No problem. Simply contact us and describe your ideas and requirements.

We will be happy to assist you in working out a "perfect" lighting solution for your domestic appliances. Whether it is a cooker, cooker hood, microwave, refrigerator, freezer, dishwasher, washing machine or drier: We provide good lighting for every domestic appliance. Talk to us, we look forward to receiving your enquiries.





Even a perfect dinner eventually comes to an end. It only remains to say that everyone involved had a very enjoyable evening. If our short story, illustrated by our employees Frank, Nicole, Daniela and Dennis, has given you a slightly better insight into the advantages and characteristics of our lighting solutions for domestic appliances, then we are particularly pleased.



General information



Your Connection to Light

Lighting systems and components for the domestic appliance industry

General information



All articles in this catalogue have been designed according to the appropriate national and international standards (VDE / IEC).

The choice of product and correct technical embodiment is the sole responsibility of the user.

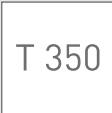
Further information on request. We reserve the right to modify products.

When regulations deviate from IEC, e.g. UL, other ratings are possible.

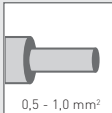
Please also note the general information at the end of this catalogue and the directions for use.

Explanation of the symbols shown on the product pages

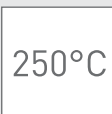
Temperature rating T 300 (Continuous use)
Declaration of the rated temperature. This is the maximum operating temperature for which the lampholder is designed. The measuring point of the temperature is on the lamp cap for Edison screw lampholders and at the lamp pin for halogen low voltage lampholders




For solid conductors within the cross sectional range stated
(In this example 0.5 - 1.0 mm²)
When regulations deviate from IEC, other cross sections are possible (e.g. UL / CSA: cable 18 AWG).



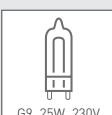
**Temperature rating /
Temperature index according to UL**




For tinned wire ends within the cross sectional range stated
(In this example 0.5 - 1.0 mm²)
When regulations deviate from IEC, other cross sections are possible (e.g. UL / CSA: cable 18 AWG).



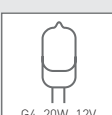
Oven lamp fitted with halogen mains voltage lamp
Cap and nominal voltage stated.



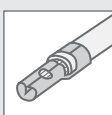
For wire ends with ferrule to the maximum diameter stated
(In this example max. ø 1.8 mm)
The cable and termination used must be compatible in respect of: Diameter and length of the ferrule, strip length of insulation.
For further information see DIN 46228, part 3, size 1 - 7



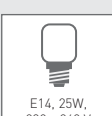
Oven lamp fitted with halogen low voltage lamp
Cap and nominal voltage stated.



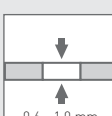
Wire ends with ferrule




Oven lamp fitted with special Edison screw lamp
Cap and nominal voltage stated.




Material thickness
Indication in mm
(In this example 0.6 - 1.0 mm)



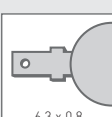
Light distribution curve on request



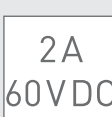
Lamp for self-cleaning ovens
The lamp was matched to the special requirements of self-cleaning ovens. E.g. special lenses made from borosilicate glass are available. However, the oven manufacturer must test the suitability himself, as the construction characteristics of different oven models and the embodiment can effect on the lamp.



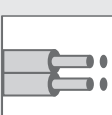
Tab terminal for electrical connection and / or earthing
Indication in mm
(In this example 6.3 x 0.8 mm)




Rating
Indication of rated values



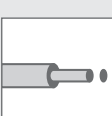
Twin push wire terminals




CAD-Data in 2D or 3D format available



Single push wire terminals



Additional information
Further information about the products shown on this page can be found on the pages shown within this symbol.



Properties of materials used for BJB products



Insulating materials for lampholders

Thermal properties	Thermoplastic						
	PC	PBT	PET	PA	POM	PPS	LCP
permissible continuous thermal stress in °C to the IEC standards for lampholders	up to 110°C	up to 180°C	up to 210°C	120°C*	approx. 85°C	up to 250°C	up to 270°C

*Limited temperature according to IEC 60598

Chemical properties							
Weak acids	+	+/-	0	-	+	+	+
Strong acids	0/-	-	0/-	-	0/-	-	0
Weak alkalies	-	0	0	+	+	+	+
Strong alkalies	-	-	0/-	-	+/-	-	0/-
Alcohol	0/-	+	+/-	+/-	+	+/-	+/-
Ketones	-	-	0/-	+	0	0	+
Esters	-	0	0/-	+	+/-	0	0
Ether	-	+	0	+	+	+/-	
Hydrocarbon chloride	-	+/-	0/-	+/-	+	0	
Benzol	-	0/-	+	+	0	0	
Cleaning benzin (aroma free)	+	+	+	+	+	+	+
Fuel mixes	0/-	+	+/-	+	+	+	+/-
Mineral oils	+/-	+	+	+	+	+	+
Animal and vegetable oils	+	+	+	+	+	+	

+ = resistant 0 = limited resistance - = not resistant

In applications the chemical resistance is dependent on many parameters, therefore this data can only be considered as recommended value.

Technical properties

Properties	Insulation material				
	PVC	Silicone	FEP	PTFE, PFA	Glass silk
	Conductor material				
	Cu/Cu tin plated	Cu tin plated	Cu tin plated	Cu nickel plated	Nickel or Cu with 27% nickel plated
Temperature resistance					
	-30°C - +105°C	-60°C - +180°C	-100°C - +180°C	-190°C - +250°C	-60°C - +450°C
Thermal resistance	-	+	+	++	+++
Electrical strength	+	++	+++	+++	++
Mechanical strength	0	-	++	++	++
Chemical resistance	-	+	++	++	++
Notched charpy impact strength	-	-	+	+	++
Fracture strength, abrasion resistance	-	0	+	+	++
Abrasion	-	0	+	+	+
Flexibility	+	++	0	0	-
Weather-, ozone- and ageing resistance	-	+	+	+	+
Not inflammable	-	-	+	+	++
Halogen free	-	+	-	-	+
Light resistant (also UV)	-	0	+	+	+
Pyrolysis	-	-	-	-	+
Price	++	+	0	-	--
Applicability for ignition voltage	0	++	+	+	++
Usual characteristics (examples)					
Nominal cross section	0.5 mm ²	0.75 mm ²		1.0 mm ²	0.5 mm ²
Outer diameter	2 mm	2.4 mm	1.6-1.8 mm	1.8-2.0 mm	2.5 mm
Nominal voltage	300 V			300 / 600 V	

0 = adequate + = good ++ = better +++ = very good - = bad -- = very bad

In applications these properties are dependent on many parameters, therefore this data can only be considered as recommended value.

Comparison of AWG cross sections to metric cross sections for multi stranded, fine stranded and finest stranded wires

AWG	approx. mm ²
23	0.34
22	0.35
20	0.5
19	0.75
18	1
16	1.5
14	2.5
12	4
10	6

BJB lampholders are in accordance with IEC regulations and are designed to IEC 60061-2 publication.

Where no electrical data is stated then:

- according to IEC 60238 / VDE 0616 part 1, Edison lampholders E14 rated 250 V / 2 A conform to overload capacity category II, E27 rated 250 V / 4 A voltage and E40 conform to voltage overload capacity category III,
- according to IEC 60400 / VDE 0616 part 3 fluorescent lampholders and starter holders rated 250 V / 2 A conform to voltage overload capacity category II
- Halogen lampholders designed according to IEC 60838 / VDE 0616 part 5, conform to voltage overload capacity category II
- Bayonet lampholders according to the requirements IEC 61184 / VDE 0616 part 2 conform to voltage overload capacity category II,
- Lampholder outer threads conform to IEC 60399.

When regulations deviate from IEC, e.g. UL, other ratings may be possible.
Please consult us before use.

Through our work with the relevant standardisation committees, we ensure our lampholders are developed and tested to the latest specifications.

All technical product drawings shown in this catalogue indicate only the main important dimensions and tolerance values. As a rule only where this is of importance for the intended application.

All measurements stated without tolerances are nominal.

Limit values are:

- DIN 16901, size 130 for moulded parts
- DIN ISO 2768-m for metal parts
- DIN 40680, medium for ceramic parts

Weights of single items stated in this catalogue are rounded up or rounded down to the nearest gram, therefore the final weight of a pack quantity may differ. The weights shown are only a guide and should not be used for order or shipping specification purposes.

The choice of product and correct technical embodiment in accordance with the corresponding regulations (e.g. IEC 60598 / VDE 0711, IEC 60335 / VDE 0700) is the sole responsibility of the user.

Specific attention must be given to:

- Temperature limits which must be observed in accordance with the corresponding regulations (e. g. T-markings);
- The necessary creepage and clearance distances as well as distances through insulation;
- The connecting cable and wires, which must have the correct heat and UV resistance, mechanical strength, voltage rating and a current carrying capacity corresponding to the conditions of the intended application;
- Protection against contact with live parts;
- Connectors, e.g. tab terminals, which must be selected in accordance with the requirements of their intended use (e.g. temperature, current carrying capacity, corrosion resistance);
- The influence of control gear, transformers, starters / ignitors and other circuit components, must always be taken into consideration.

The catalogue also contains technical information, to which attention must be paid during project development, construction and electrical installation or when operating lighting installations. This information must be passed on, e.g. in an installation instruction.

To ensure snap fix products locate correctly and securely, consideration must also be given to the cut-out and where applicable, attention must be paid to special requirements (e.g. degree of burr, direction of punching, radii, etc.).

Consideration must also be given to the area required around the cut-out, to allow correct insertion. Different components may require to be inserted at different angles.

During fixing, it must be ensured that the fixing surface is correctly sized.

Information regarding light fitting wall thickness, should always be interpreted as inclusive of a coating, unless stated otherwise.

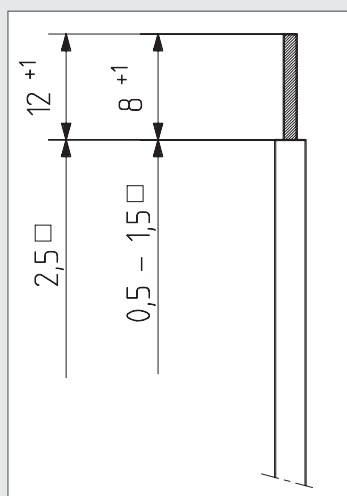
If there is a requirement for one of our products to be embodied in a way other than shown in our catalogue, please contact us.

Attention must also be given to the IEC lamp standards, as well as the technical instructions of the lamp manufacturers in respect of the embodiment and correct operation of lamp.

In accordance with our policy of continual product development and improvement, we reserve the right to make design modifications.

Due to the amount of information involved in compiling this catalogue, it is not always possible to avoid printer's errors or minor mistakes. Although every care is taken, BJB accepts no responsibility for the accuracy of the contents. If in doubt, or if you require confirmation of specific information, please contact us.

Edition 2008



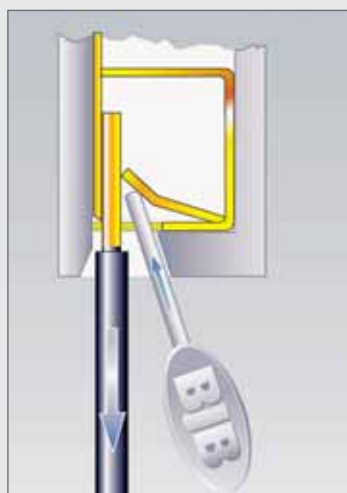
Stripping of conductors

Pushwire contacts for solid core and tinned wires:

$$0,5 - 1,5 \text{ mm}^2 = 8 + 1,0 \text{ mm}$$

$$2,5 \text{ mm}^2 = 12 + 1,0 \text{ mm}$$

Should other terminations need to be used e.g. ferrules, you will find the relevant information in the product description.



Methods of releasing wires

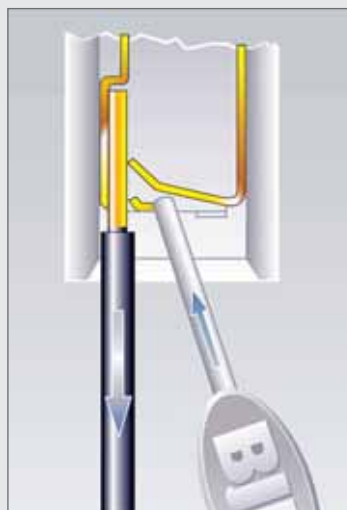
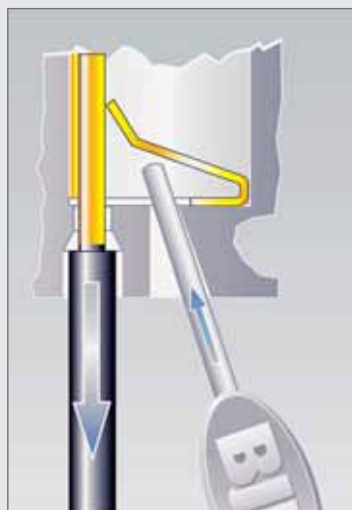
Pushwire contacts with a key or oval hole in the housing:

The release probe, which we can gladly provide upon request, is placed behind the conducting wire, thereby opening the leaf spring. The wire can be pulled out.

(when pressing the leaf spring down, extreme care must be taken in order that the contact does not become distorted)*.

Simplest way:

Pull out the release probe and the wire at the same time.



Pushwire contacts with a round hole or release slot in the housing:

A release probe or screwdriver is inserted into the release slot and a slight pressure applied to the leaf spring (when pressing the leaf spring down, extreme care must be taken in order that the contact does not become distorted)*.

The wire is easily removed.

* Under light fitting production conditions, we recommend not to use unassembled lampholders again.



BJB worldwide



Your Connection to Light



BJB and its subsidiaries

BJB Germany

BJB GmbH & Co. KG
Werler Straße 1 . 59755 Arnsberg
Telefon +49 (0) 29 32.9 82-0
Telefax +49 (0) 29 32.9 82-8201
info@bjb.com www.bjb.com

BJB China

BJB Electric Dongguan Ltd.
Guancheng Science & Tech. Park
Shilong Road, Guanlong Road's
523119 Dongguan City
China
Telefon +86 769 22766 891
Telefax +86 769 22766 896
tommy.leung@bjb.com
www.bjb.com

BJB United Kingdom

BJB (UK) Ltd.
5 Axis Centre
Cleeve Road
Leatherhead
KT22 7RD
Telefon: +44 (0)1372 380 850
Fax: +44 (0)1372 380 859
bjbuk@bjb.com
www.bjb.com

BJB Hong Kong LTD.

Room 1105 Hang Seng Building
77 Des Voeux Road Central
Hong Kong
Telefon +86 769 22766 891
Telefax +86 769 22766 896
tommy.leung@bjb.com
www.bjb.com

BJB Italy

BJB S.p.A.
Viale Famagosta, 61
I-20142 Milano
Telefon +39 02 89 15 02 76
Telefax +39 02 89 15 90 29
bjbitalia@bjb.com
www.bjb.com

BJB Japan

BJB Co., Ltd.
2-5-9 Nakagawa-Chuo
Tsuzuki-ku,
Yokohama Kanagawa, 224-0003
Telefon +81 45 595 1239
Telefax +81 45 591 1001
sales-japan@bjb.com
www.bjb.com

BJB Spain

BJB Procesa S.A.
C-155 De Sabadell a Granollers, km 14,2
Apartado de Correos, 8
E-08185 Lliça de Vall (Barcelona)
Telefon +34 93 8445170
Telefax +34 93 8445184
procesa@bjb.com
www.bjb.com

BJB Taiwan

BJB Electric Taiwan Corporation
4/F, No. 108, Chow-Tze Street
Nei-Hu District (11493)
Taipei
Telefon +886 2 2627 7722
Telefax +886 2 2627 1122
v_BJBTaiwan@bjb.com.
www.bjb.com

BJB USA

BJB Electric L.P.
6375 Alabama Highway
Ringgold, GA 30736
U.S.A.
Telefon +1 (706) 965-2526
Telefax +1 (706) 965-2528
sales@bjb.com
www.bjb.com

Sales office Brazil

Mr. Michael Umlauf
Tel.: +55 11 2589 8455
Mobile: + 55 11 8799 0495
Telefax +49 2932 982 8 384
michael.umlaut@bjb.com
www.bjb.com

BJB Representatives

Argentina

MIXDEAL S.A.
Juan A. García 4047
C1407FWO
Ciudad de Bs As. - Argentina
Phone: +54 11 4639 5636
Fax: +54 11 4568-4395
Email: mixdeal@mixdeal.com.ar
Internet: <http://www.mixdeal.com.ar>

Australia

SOANAR PTY LTD
1168a South Road
Clovelly Park 5042 South Australia
Phone: +61 (0) 8 8276 6711
Fax: +61 (0) 8 8276 6788
Mobile: +61 (0) 419 323 711
Email: g.jones@soanar.com
Internet: <http://www.soanar.com>

Austria

LTV Lampen und Leuchten
Vertriebsges.m.b.H.
Industriestrasse B-4
A -2345 Brunn am Gebirge
Tel.: +43 2236 9003 0
Fax: +43 2236 9003 0
Email: sales@ltv.at
Internet: <http://www.ltv.at>

Belgium

ARFA sprl/bvba
Rue A. Diderich 63
B-1060 Bruxelles / Brussel
Tel.: +32.(0)2.539.30.54
Fax: +32.(0)2.539.21.44
Email: info@arfa.be

Brazil

Mr. Michael Umlauf
Tel.: +55 11 2589 8455
Mobile: + 55 11 8799 0495
Fax: +49 2932 982 8 384
Email: Michael.Umlauf@bjb.com

Bulgaria

Lumina Ltd.
83 Tzar Assen Str.
BG - 1000 Sofia
Tel.: +359 2 983 11 32
Fax: +359 2 983 20 98
Email: m.monev@luminaltd.com

Canada

BJB Electric L.P.
6375 Alabama Highway
Ringgold,GA 30736-0968
U.S.A.
Tel.: +1 (706) 965-2526
Fax: +1 (706) 965-2528
Email: sales@bjb.com

Chile

RTR DNA CHILE S.A.
La Estera 668 Loteo Industrial
Valle Grande Lampa,
Santiago
Tel.: +56-2 328 4400
Fax: +56-2 738 6911
Email: comex@rtr.cl
Internet: <http://www.rtr.cl>

China

BJB Electric Dongguan Ltd.
Guancheng Science & Tech. Park
Shilong Road, Guanlong Road's
523119 Dongguan City
Tel.: +86 769 22766 891
Fax: +86 769 22766 896
Email: tommy.leung@bjb.com

Lens World Trading Co.LTD
10/F.Unit 21
Well Fung Ind.Bldg.
No.58-76,Ta Chuen Ping St
Kwai Chung N.T.
Hong Kong
Tel.: +852 2 /481 4747
Fax: +852 2 /423 3903
Email: info@lenshk.com

HO HANG LOGISTICS(SZ) ,LTD
Room 702c,building C
Indali Digital Garden,Hongmian Roas
Free-trade Zone
Futian District
ShenZhen, China
Tel.: +86 755 25331123/63/83
Fax: +86 755 25331193
e-mail: info@lenshk.com

SHANGHAI YUNYANG TRADING CO.LTD.
Room 1206, Jin Qiao Plaza
No. 2077, Yan An xi road
Shanghai 200336
China
Tel.: +86 21 62098933 / +86 21 62098936
Fax: +86 21 62098939
Email: jinyhcd@online.sh.cn

Colombia

Técnica de Conexiones Ltda.
Tino R. Calderari
Cra. 49 no. 98A-17
Bogota C.D.
Tel.: +57 1 610 2931
Fax: +57 1 2572756
Email: tinoc@teconex.com
Internet: <http://www.teconex.com>

Czech Republic

DNA Central Europe s.r.o.
Podolí 30
250 81 Nehvizdy
Tel.: +420 326 992 511
Fax: +420 326 994 892
Email: info@dna.cz
Internet: <http://www.dna.cz>

Denmark

UNELCO A/S
Bødkervej 18
DK-4300 Holbæk
Tel.: +45 36 49 42 49
Fax: +45 36 49 03 66
Email: bdb@unelco.dk
Internet: <http://www.unelco.dk>

Egypt

AVAK
Osman Towers
Cornish El Nil Bldg.14,1st Fl.
P.O.Box 630 Maadi
11728 Cairo
Tel.: +20 2 5261177
Fax: +20 2 5261188
Email: avakimpex@avak.com

Finland

GSBB Co.Ltd. Oy
Kilonkallio 3
02610 Espoo
Tel.: +358 (0) 98 84 52 80
Fax: +358 (0) 98 81 37 60
Email: filippa@gsbb.fi
Email: gustaf@gsbb.fi
Internet: <http://www.gsbb.fi>

France

Distributor:
TridonicAtco France
34,Rue de L'Expansion
F-67150 Erstein-Gare
Tel.: +33 3 88596270
Fax: +33 3 88596275
Email: Pierre.Leonard@tridonicatco.com
Email: Nadine.Lehmann@tridonicatco.com

Germany

FRANKFURT/MAIN + STUTTGART (with stock)
Meier Handels GmbH
Am Bahnhof 3
35216 Biedenkopf
P.O. Box 13 41
35203 Biedenkopf
Tel.: +49 (0) 64 61 / 9 22 33
Fax: +49 (0) 64 61 / 9 22 37
Email: info@div-meier.de

COLOGNE (with stock)
Gustav Wauschek GmbH
Mathias-Brüggen-Straße 76
50827 Köln
Tel.: +49 (0) 2 21 / 59 40 64
Fax: +49 (0) 2 21 / 59 37 21
Email: info@wuschek.de

NUREMBERG + MUNICH
Dr. Theo Ellinger
P.O. Box 10 02 32
90564 Schwaig
Tel.: +49 (0) 9 11 / 50 29 16
Fax: +49 (0) 9 11 / 50 17 08
Email: ellinger.gdbr@t-online.de

Greece

C.Canetti &Co.
269 Messogion Ave.
GR-15231 Halandri /Athens
Tel.: +30 210 6721500
Fax: +30 210 6775005
Email: canetti@hol.gr

Domestic Appliance Industry:
Intermarket
M. G.Rosakis &Co.INC./
International Associates
20, A.Metaxa St.-Glyfada
Gr -16674 Athens
Tel.: +30 210 9681214
Fax: +30 210 898 2332
Email: grosakis@otenet.gr

Hong Kong

Lens World Trading Co.LTD.
10/F.Unit 21
Well Fung Ind.Bldg.
No.58-76,Ta Chuen Ping St
Kwai Chung N.T.
Hong Kong
Tel.: +852 2 481 4747
Fax: +852 2 4233903
Email: tommy@lensworld.com.hk

Hungary

Laszlo Rajnoha
Dorozsmai u. 231
H-1142 Budapest
Tel.: +36 1 460 95 39
Fax: +36 1 460 95 40
Email: rajnoha.laszlo@externet.hu

India

Atco Controls (I) Pvt. Ltd,
38B Nariman Bhavan, Nariman Point,
Mumbai 400021
Tel.: (9122) 2202 5528 / (9122) 6632 5528
Fax: (9122) 2203 2304
Email: atcoin@vsnl.com
Email: sales@atcocontrols.com

Indonesia

P.T. Sahabat Indonesia I.M.
Jl. Muara Karang Selatan
Blok A Utara No.1 Kav No.11
Kawasan Industri Pergudangan
Jakarta-Utara 14440
Indonesia
Tel.: +62 21 6610651
+62 21 6621780
Fax: +62 21 6603700

Iran

Miran Noor Gostar
P.O. Box 16895-343
Teheran
Tel.: +98 21 2528198
Fax: +98 21 2520806
Email: mirali@mirannoor.com
Internet: <http://www.mirannoor.com>

Domestic Appliance Industry:
Afarinesh Qeshm Co.Ltd
Ave. Khoramshahr (Apadana)
No. 109 (Next to Bank Refah Kargaran)
Building No 110
First Floor
P.O.Box 15875
Teheran /Iran
Foujan Sebt
Tel.: +98 21 88769432
Fax: +98 21 88767637
Email: bct@emirates.net.ae

Israel

El-Kam Ltd.
P.O. Box 2475
Ha'ta'as Street 26
44425 Kfar Saba
Tel.: +972 9/765 88 08
Fax: +972 9/765 85 45
E-mail: el-kam@el-kam.com

Italy

BJB S.p.A.
Viale Famagosta, 61
I-20142 Milano
Tel.: +39 02 /89 15 02 76
Fax: +39 02 /89 15 90 29
Email: bjbitalia@bjb.com
Internet: <http://www.bjb.com>

Japan

BJB Co.,Ltd.
2-5-9 Nakagawa-Chuo
Tsuzuki-ku,
Yokohama Kanagawa, 224-0003
Tel.: +81 45 595 1239
Fax: +81 45 591 1001
Email: sales-japan@bjb.com

Korea

Scientrade Inc.
2 F,Gumhwa Bldg.
201-42, Guwol 1-dong, Namdong-gu,
Incheon
Tel.: +82 32 4390110 (Rep.)
Fax: +82 32 4293954
Email: jee0130@scientrade.com
Internet: <http://www.scientrade.com>

Malaysia

Compolite PTE Ltd.
Blk 65A Jalan Tenteram #03-08/09
St. Michael's Industrial Estate
328958 Singapore
Tel.: +65 6358 3383
Fax: +65 6251 3383
Email: James_lee@compolite.com.sg

Mexico

GCM Comercial, S.A. de C.V.
Miguel Cañedo
Eje 126 No.219
Zona Industrial
Apto.Postal UPA-16
78395 San Luis Potosi,S.L.P.
Tel: +52 444 8240116
Fax: +52 444 8240060
Email: mcanedo@grupogcm.com

Netherlands

Distributor:
Elpro B.V.
Pascalstraat 3-I
2811 EL Reeuwijk
Tel.: +31 182 533633
Fax: +31 182 570414
Email: info@elpro.nl
Internet: <http://www.elpro.nl>

New Zealand

TRIDONICATCO NZ LTD
P.O. Box 107044
Airport Oaks Mangere
9 Aintree Avenue,
Manukau City 2022
Auckland
Tel.: +64 9 256 2310
Fax: +64 9 256 0109
Email: cmills@tridonicatco.co.nz

BJB Representatives

New Zealand

Domestic Appliance Industry:
SOANAR PTY LTD
1168a South Road
Clovelly Park 5042 South Australia
Phone: +61 (0) 8 8276 6711
Fax: +61 (0) 8 8276 6788
Mobile: +61 (0) 419 323 711
Email: gjones@soanar.com
Internet: <http://www.soanar.com>

Norway

Vanpée Norge A/S
Vestvollveien 6 D
2019 Skedsmokorset
Tel.: + 47 64 83 82 80
Fax: +47 64 83 82 81
Email: firmapost@vanpee.no
Internet: <http://www.vanpee.no>

Pakistan

EMEC
Engineering Materials &
Equipment Company
2nd Floor Alsadaf 35-C Empress Road
PAK Lahore 54000, Pakistan
Tel.: +92 42 6363394-95
Fax: +92 42 6363393
Email: naeema@lhr.comsats.net.pk

Peru

TRIANON CO-PRODUCTION PARTNERSHIP S.A.
Av. Rep. de Panama 4125
Surquillo
Lima
Luis Zwiebach
General Manager
Tel.: +51 1 241 6405
Fax: +51 1 241 6406
Email: info@trianon.com.pe
Internet: <http://www.trianon.com.pe>

Philippines

Pacific Lightech Corporation
420 Ortigas Avenue corner Xavier Street
Greenhills, San Juan
Metro Manila, Philippines
Tel.: +632-6386226, +632-6374599
Fax: +632-6873328
Email: sales@pacificlightech.com

Poland

DJP Sp.z.o.o.
ul. Krasinskiego 41
01-755 Warszawa
Tel.: +48 22 669 05 80
Fax: +48 22 639 70 37
Email: sales@dj.com.pl
Internet: <http://www.djp.com.pl>

Russia

Tochka Opory Co.Ltd.
12, Fakultetskij per,
125080 Moscow
Tel.: +7 499 158 2461
Fax: +7 495 626 9796
Email: tochka@msk.k-to.ru
Internet: <http://www.k-to.ru>

Singapore

Compolite PTE Ltd.
Blk 65A Jalan Tenteram #03-08/09
St. Michael's Industrial Estate
328958 Singapore
Tel.: +65 6358 3383
Fax: +65 6251 3383
Email: james_lee@compolite.com.sg

Slovakia

DNA Slovakia s.r.o.
Komárnanská cesta 13
SK-940 43 Nové Zámky
Tel.: +421 35/6401 907
Fax: +421 35/6400 616
Email: j.slamenka@dnacap.sk
Internet: <http://www.dnacap.com>

South Africa

Luminaire Component Industries (PTY) Ltd.
1, Sam Green Road
Greenhills Industrial Estate
Tunney Ext. 7
ZA -1401 Germiston / Johannesburg
P.O. BOX 1034
ZA - 2008 Bedfordview
Tel.: +27 11 822 0060
Fax: +27 11 822 0079
Email: info@lcisa.co.za
Internet: <http://www.lcisa.co.za>

Spain

BJB Procesa S.A.
C-155 De Sabadell a Granollers, km 14,2
Apartado de Correos, 8
E-08185 Lliça de Vall (Barcelona)
Tel.: +34 93/8445170
Fax: +34 93/8445184
Email: procesa@bjb.com

Sweden

N.L.S.
Lennart Söderlind
Tistladalsvaegen 5
S-269 37 Båstad
Tel.: +46 4313 691 50
Fax: +46 4313 691 05
Email: n.l.soderlind@telia.com

Distributor:
Vanpée AB
Idbäcksvägen 12
S-61138 Nyköping
Tel.: +46 8556 21130
Fax: +46 1552 14230
Email: info@vanpee.se
Internet: <http://www.vanpee.se>

Switzerland

M. Schönenberger AG
Industriest. 17
CH-5507 Mellingen
Tel.: +41 56 4818141
Fax: +41 56 4818145
Email: erismann.heinz@schoenenberger-electro.ch

Taiwan

BJB Electric Taiwan Corporation
4/F, No. 108, Chow-Tze Street
Nei-Hu District (11493)
Taipei
Tel.: +886 2 2627 7722
Fax: +886 2 2627 1122
Email: v_BJBTaiwan@bjb.com.

DONG GUAN RUEY QI LIGHTING TRADE CO. LTD.
No. 6, Jinyu 2nd Street,
Jingqiao Industrial District
Qingxi Town, Dongguan City
Guangdong Province
China
Tel.: +86 769 8206 7777
Fax: +86 769 8732 2977
Email: dgruey@vip.163.com.

Thailand

Mr. Olaf Reese
389 /43 Supawan Village, Soi 3
Rom Klao Road
T -10520 Lard Krabang
Thailand
Tel.: +66 2 915 1370
Fax: +66 2 915 1589
Mobile: +66-81-6406004
Email: olaf@loxinfo.co.th

Turkey

ER Elektronik
Sanayi ve Ticaret A.S.
Yeniyol No.10
34440 Kasimpasa-Istanbul
Tel.: +90 212 2971941
Fax: +90 212 2387421
Email: satis@erelektronik.com

United Kingdom

BJB (UK) Ltd.
5 Axis Centre
Cleeve Road
Leatherhead
KT22 7RD
Telefon: +44 (0)1372 380 850
Fax: +44 (0)1372 380 859
bjbuk@bjb.com
www.bjb.com

USA

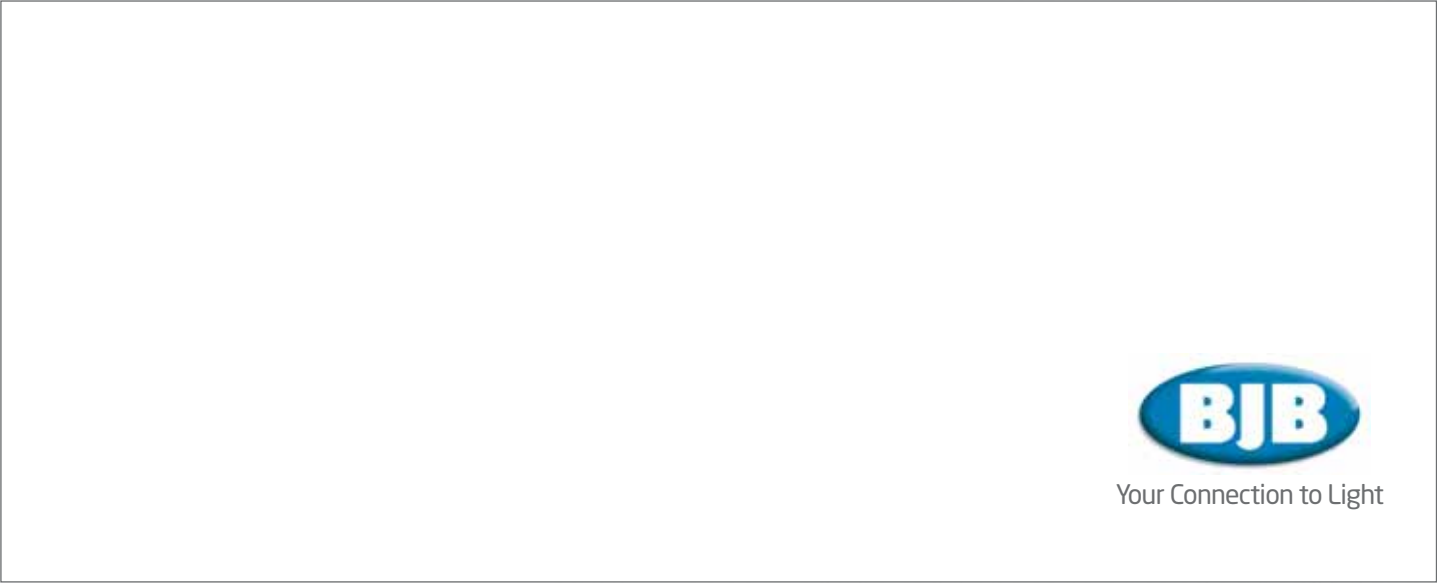
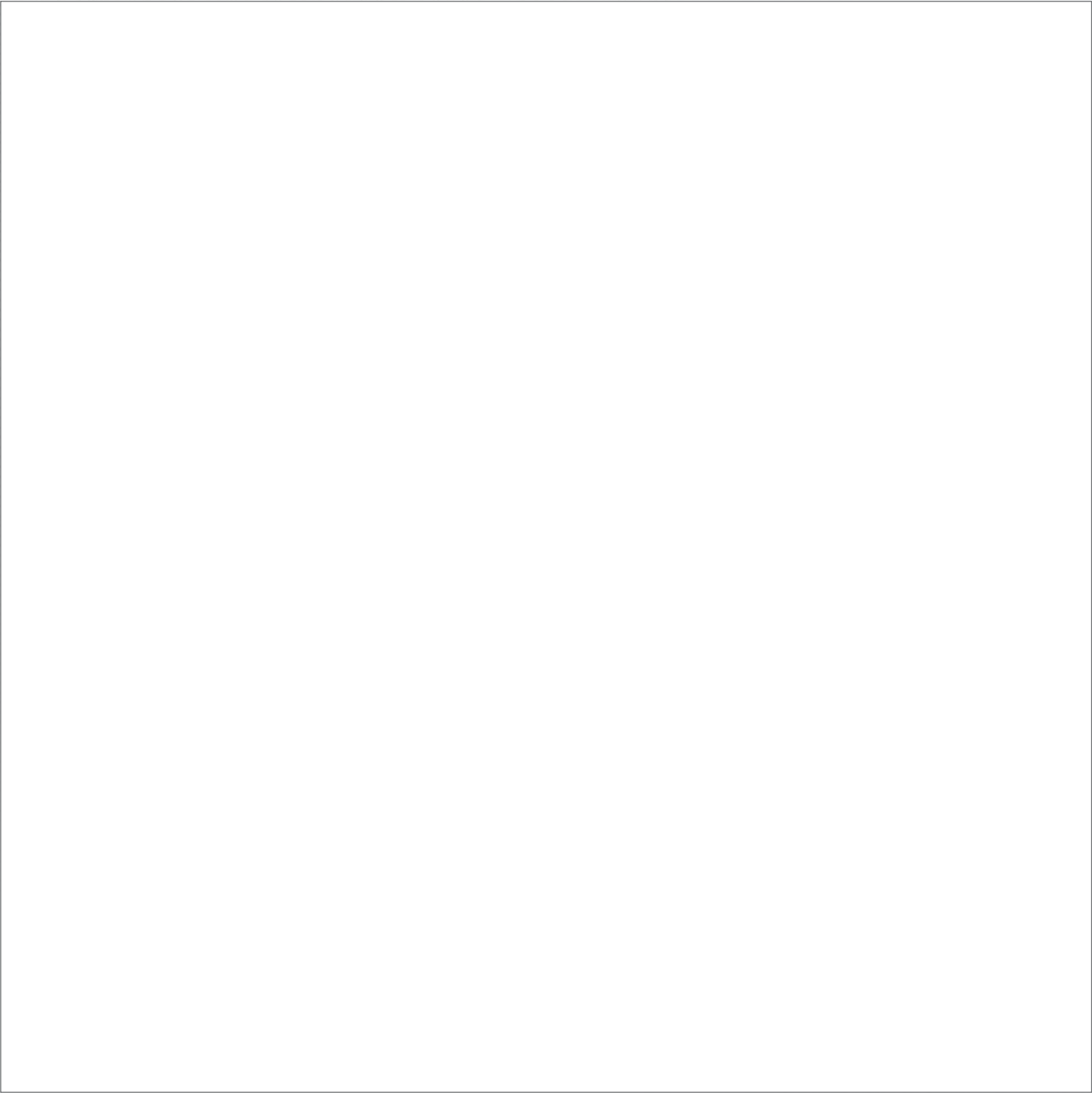
BJB Electric L.P.
6375 Alabama Highway
Ringgold, GA 30736
U.S.A.
Tel.: +1 (706) 965-2526
Fax: +1 (706) 965-2528
Email: sales@bjb.com

Venezuela

Roberto Barham
Avenida Cristobal Colón
Edificio Urquia 3-A
YV-LaTrinidad, Caracas 1080
Venezuela
Tel: +58 212 94 51 218
Fax: +58 212 39 11 694
Cel: +58 416 6333225 & +58 412 6196640
Email: ribarham@cantv.net

Vietnam

Oriental Star Im-Export Co. Ltd.
Head Office
R505 KS Tuoi Tre Bldg.
2 Tran Thanh Tong Street
Hanoi
Tel.: +84 9720120
Fax: +84 9720124
Email: oristar@oristar-vietnam.com



Your Connection to Light