

Lampholder series 26.726 for OSRAM DULUX L HE
New 2GX11 lampholders



Your Connection to Light

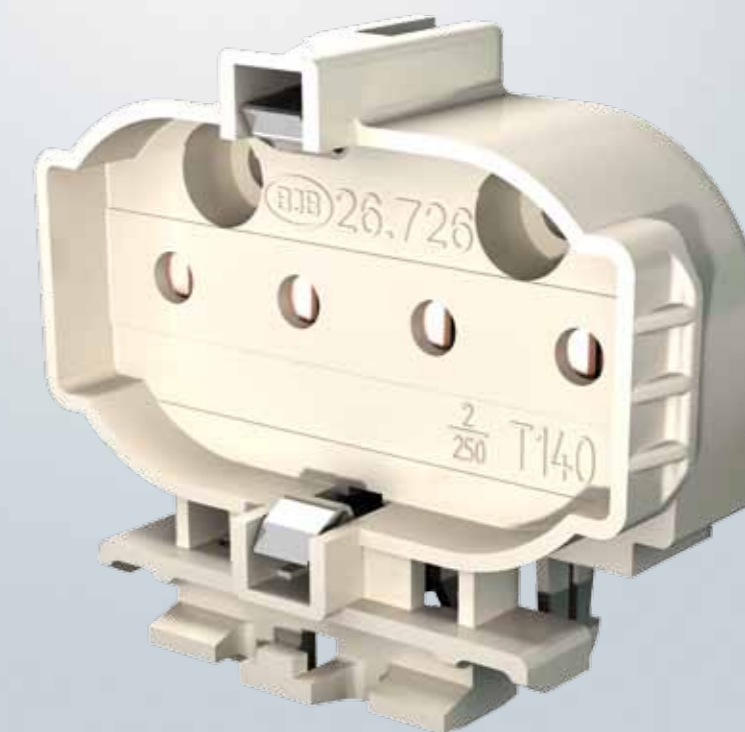


When light quality and cost-effectiveness matters.

Lampholder series 26.726 for OSRAM DULUX L HE

Prerequisites...

- Lampholder designed in co-operation with OSRAM
- Keying to avoid incorrect lamp installation and lamp base overheating
- Wide range of mounting options





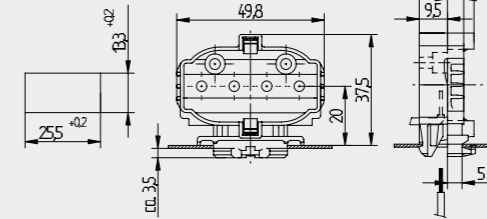
Lampholders for compact fluorescent lamps

26.726

2GX11



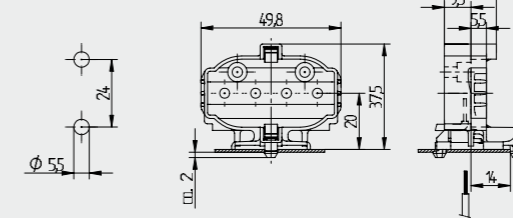
pkg. wt. part no.
250 14 g **26.726.4908.50**



For lamps DULUX L HE
Snap in foot 25.5 x 13.3 mm
Housing: PBT
• For cable insertion direction please refer to drawing



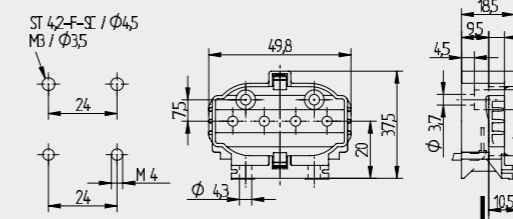
pkg. wt. part no.
250 14 g **26.726.4907.50**



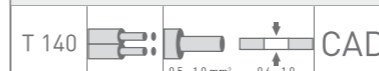
For lamps DULUX L HE
Snaps in pins
Housing: PBT
• Holes: 5.5 mm
• Fixing centres: 24 mm
• For cable insertion direction please refer to drawing



pkg. wt. part no.
250 14 g **26.726.4903.50**



For lamps DULUX L HE
Screw fixing vertically
Screw fixing horizontally
Housing: PBT
• Screw fixing horizontally: Holes: ϕ 4.3 mm for screws ISO 1207 - M4
• Screw fixing vertically: Holes: ϕ 3.7 mm for screws ISO 1207 - M3, for self-tapping screws with locating groove ISO 1481 - ST 4,2 - F/ISO 4753 - SC
• For cable insertion direction please refer to drawing



Lampholders for compact fluorescent lamps

26.726

2GX11



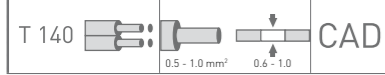
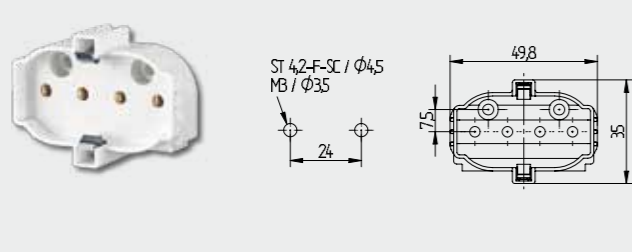
pkg. wt. part no.
250 14 g **26.726.4905.50**

For lamps DULUX L HE

Screw fixing vertically

Housing: PBT

- Holes: ϕ 3.7 mm: for screws ISO 1207 - M3 or self-tapping screws with locating groove ISO 1481 - ST 4.2 - F / ISO 4753 - SC
- For cable insertion direction please refer to drawing



Lampholders for compact fluorescent lamps

26.726

2GX11



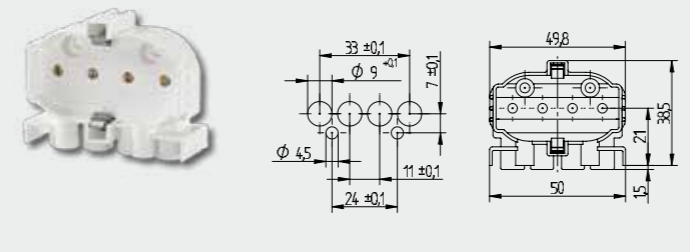
Pkg. Gew. Artikel-Nr.
250 14 g **26.726.4906.50**

For lamps DULUX L HE

Screw fixing

Housing: PBT

- Holes: ϕ 3.7 mm: for self-tapping screws with locating groove ISO 1481 - ST 4.2 - F / ISO 4753 - SC
- For cable insertion direction please refer to drawing



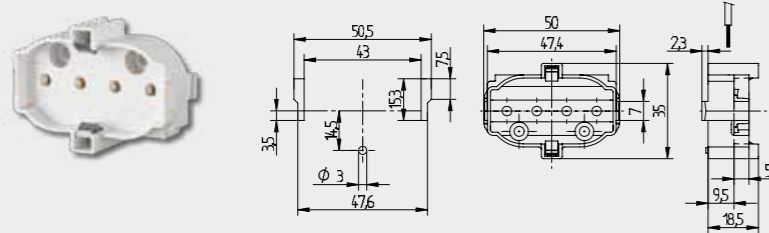
pkg. wt. part no.
250 14 g **26.726.4940.50**

For lamps DULUX L HE

Push in fixing into light fitting housing

Housing: PBT

- For cable insertion direction please refer to drawing



Symbols

T 140 Temperature rating

Twin push wire terminals

For solid conductors within the cross sectional range stated

Material thickness, in mm

CAD CAD data available

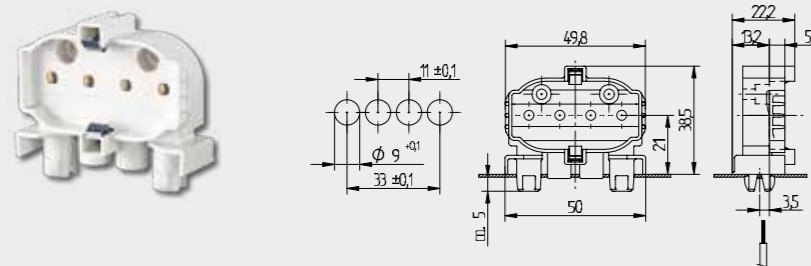
pkg. wt. part no.
250 14 g **26.726.4904.50**

For lamps DULUX L HE

Snap in pins

Housing: PBT

- For cable insertion direction please refer to drawing



BJB GmbH & Co. KG · Werler Str. 1 · 59755 Arnsberg · Germany
Telephone +49 2932 982-0 · Fax +49 2932 982-8201
info@bjb.com · www.bjb.com



Your Connection to Light