

BJB GmbH & Co. KG · Werler Str. 1 · 59755 Arnsberg · Germany
Telephone +49 2932 982-0 · Fax +49 2932 982-8201
info@bjb.com · www.bjb.com



LED

What belongs together, grows together
Connectors for LED light sources from Citizen



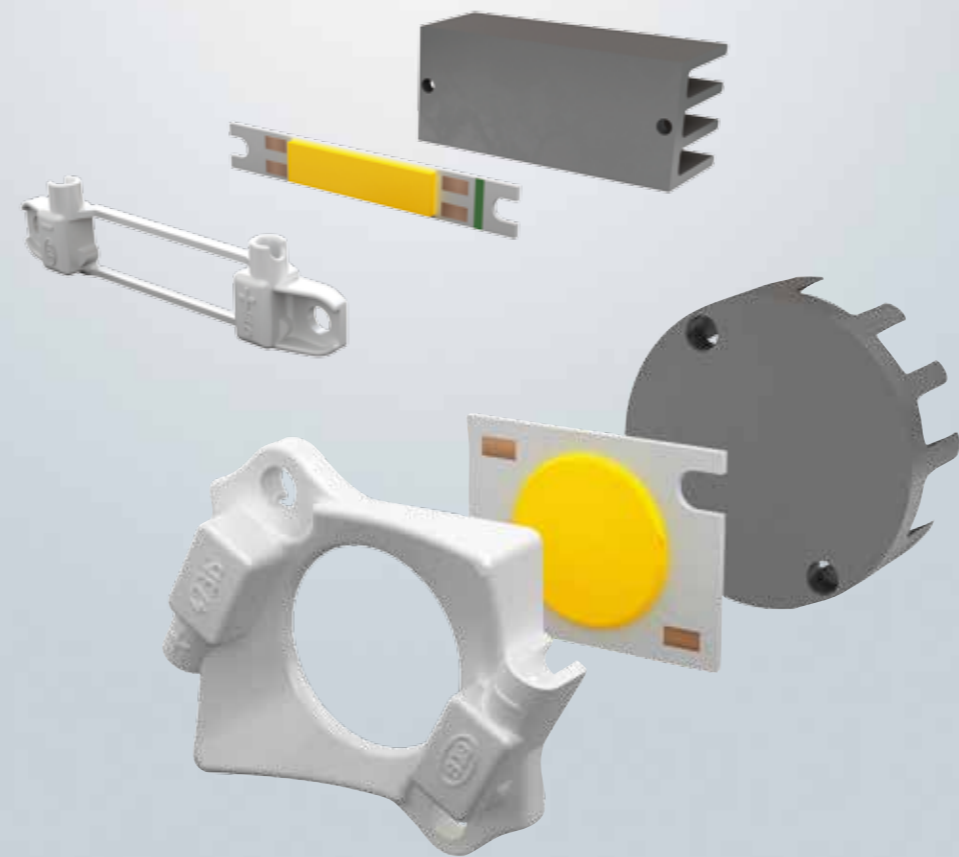


New light of old virtues.

Connectors for LED light sources from Citizen

Prerequisites...

- Secure heat management for long term operation
- No soldering, screw fixing
- Fast and efficient wiring via push wire contacts, a range of wiring options
- Easy replacement of LED Modules



LED-Lighting and connection technology

47.315

Connectors for LED Light Sources from Citizen



pkg.	wt.	part-no.
125	1 g	47.315.1002.50

Connector for LED light source CL-L102 from Citizen
 Screw fixing
 Housing: PBT
 Contacts: CuSn

- Screw fixing: for screws M3 or self-tapping screws with \varnothing 3 mm and retaining rings
- Max. torque for screw fixing 0.6 Nm
- Strip length: 6" mm
- Polarity of LED must be observed
- Specifications of LED-manufacturer must be observed

0.25 - 0.5 mm² 0.5 mm² 2A 60VDC CAD

pkg.	wt.	part-no.
125	1 g	47.315.1101.50

Connector for LED light source CL-L233 from Citizen
 Screw fixing
 Housing: PBT
 Contacts: CuSn

- Screw fixing: for screws M3 or self-tapping screws with \varnothing 3 mm and retaining rings
- Max. torque for screw fixing 0.6 Nm
- Strip length: 6" mm
- Polarity of LED must be observed
- Specifications of LED-manufacturer must be observed

T 110 0.25 - 0.5 mm² 0.5 mm² 2A 60VDC CAD

Symbols

- T 110 Temperature rating
- Single push wire terminals
- For tinned wire ends within the cross sectional range stated
- For solid conductors within the cross sectional range stated
- 2A 60VDC Rating
- CAD CAD data available