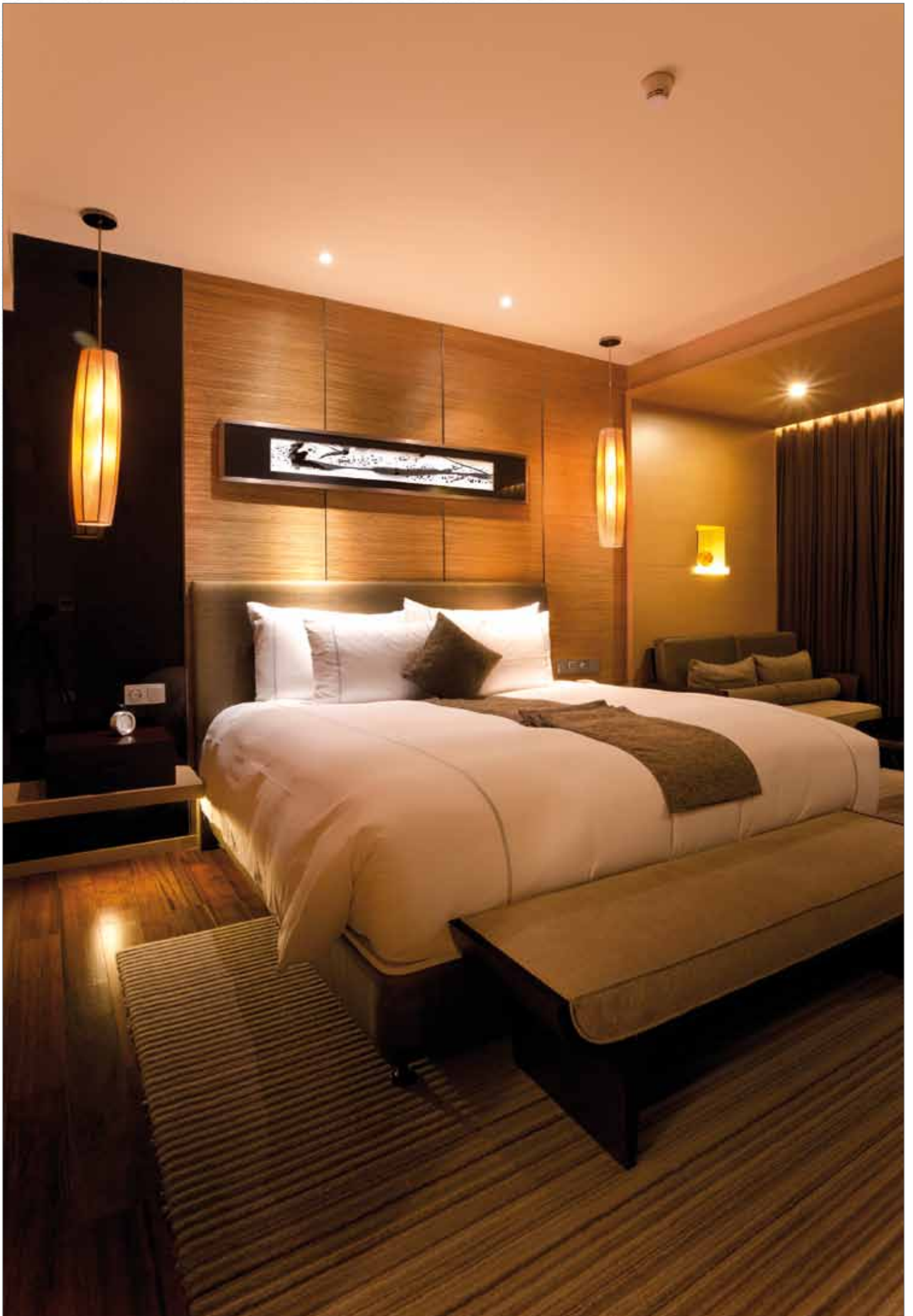




FAIR
HIGH
LIGHTS
2012

Lampholder systems and LED connection technology
for lighting in the hotel and restaurant industry
Broaden your horizon and connect with BJB





Enjoy !

The requirements and expectations of lighting systems in hotels and restaurants are highly diverse since this industry combines different areas of life. From the façade of a building, the outdoor area, to the reception area, floors, offices, meeting rooms and the "personal" hotel room - individual lighting

is required. Different light sources are used to achieve this and lighting designers not only consider the technical data. They also want to create the right atmosphere and consequently have to find the balance between the architecture and the purpose of the room. Since conventional Edison lamps are banned,

it is still important to create a cosy atmosphere. Therefore we have designed a LED Light Engine to serve this very purpose. Further stylish lampholders and LED connectors are shown in the overview below. You can find further information on www.bjb.com

LED Light Engine with E27 thread and integrated driver

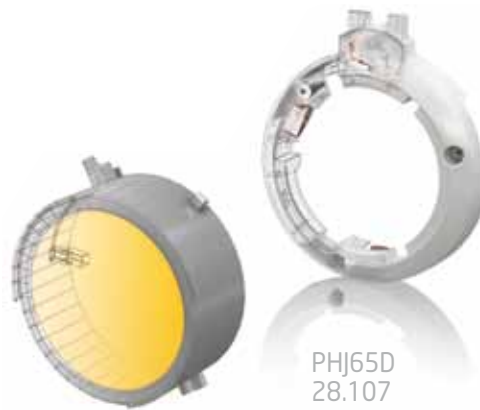
The solution for residential and hospitality lighting. Existing luminaire designs based on Edison or CFL technology can be exchanged with premium LED technology, that is THEFT-Proof. The BJB LED E-Line - a real alternative to conventional technology: Only 6W, but 520lm and 25,000h life time, CCT of 3,000K, 220 - 240V, 50 - 60Hz, 100% light instantly. BJB's standard accessories for E27 can be used, eg. insulating caps 22.917, shade rings 22.702.



Atmosphere in LED.

Lampholder for LED Light Engines (PHJ65-d/PHJ85d), second generation

Many things have been improved. Apart from the high functionality the newly designed visual appearance is a prominent feature, which is in an important feature especially in open luminaires.



PHJ65D
28.107

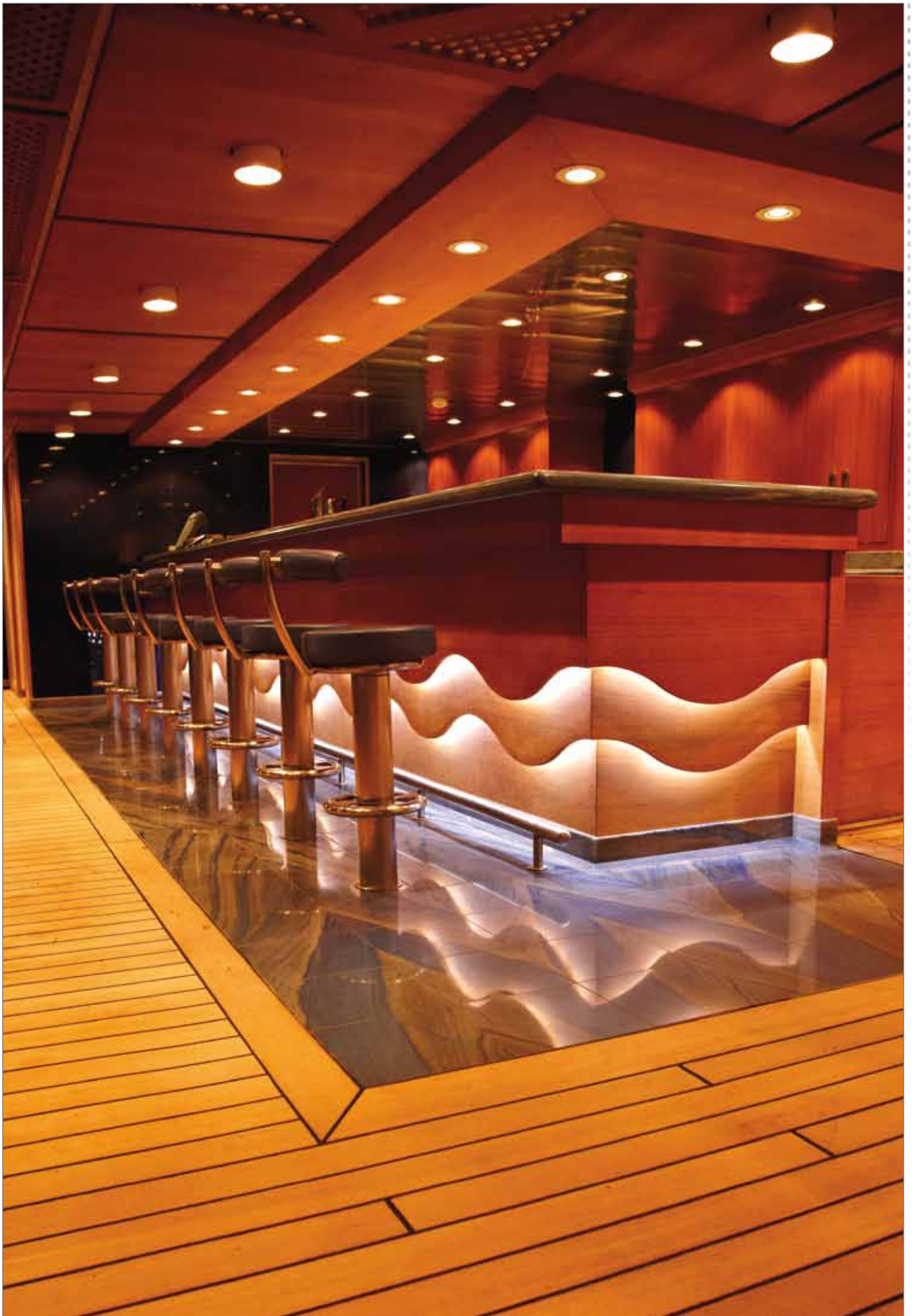


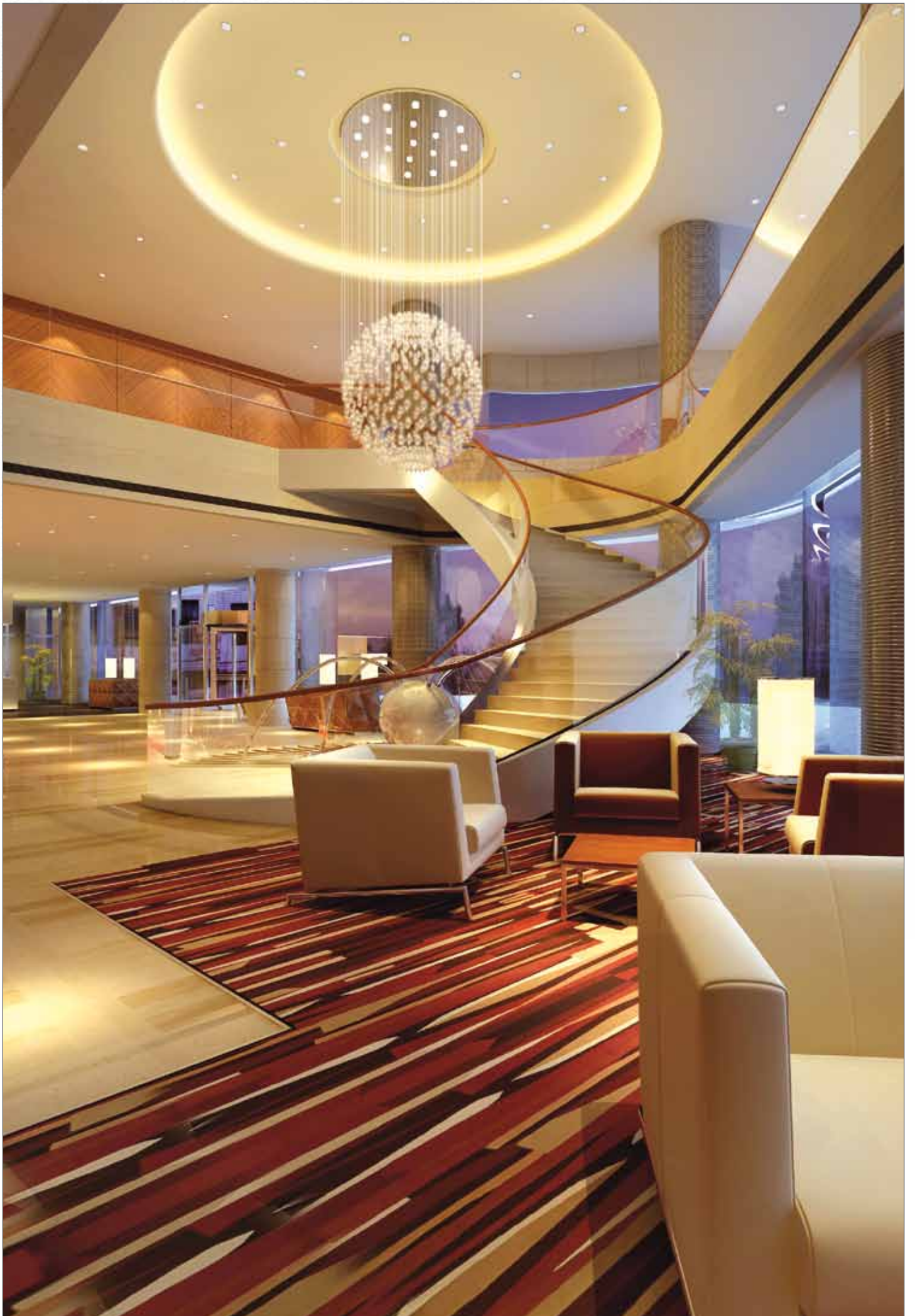
PHJ85D
28.108

LED & ADS

LED components from BJB are almost always ADS-compatible. Like all other components, they can be wired automatically with ADS systems.







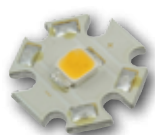
Something for everyone, something right of everything.

LED Connectors for STARboards

The so called STARboards were one of the first high power LEDs in general lighting. At an early stage BJB developed the corresponding connection technology, guaranteeing an easy mechanical and electrical connection, that eliminated the soldering process. An optic holder that snaps into the LED connector increases the possibility to direct the light. Today we deliver LED STARboard connectors for virtually every manufacturer. These are often used in emergency lighting.



STARboard
47.313



Connection technology for OLED with contact pins

BJB does its bit to do pioneering work to solve the challenge of contacting the flimsy substrate layer. One application for our OLED connector is the octagonal OSRAM ORBEOS (ø 79 mm). However, other dimensions are also possible.



NEW



OLED
47.401



LED-C-LINE

Lampholders for Halogen lamps GU10/GZ10

Ceramic lampholders. Suitable for screw mounting or to snap into insulation caps. This lampholder series is suitable for Halogen Main Voltage lamps as well as LED retrofit solutions. Especially suitable for decorative lighting in restaurants & bars.



G9
25.834



These and further documents can be found
at www.bjb.com/downloads



BJB Catalogue



LED Catalogue



www.bjb-automation.com



www.bjb.com



BJB-Automation



BJB GmbH & Co. KG · Werler Str. 1 · 59755 Arnsberg · Germany
Telephone +49 2932 982-0 · Fax +49 2932 982-8201
info@bjb.com · www.bjb.com


Your Connection to Light