



### Strip details

Wiring method	Plug in
Cross section (solid)	0.2 - 0.75 mm <sup>2</sup> , AWG 24-18
Cross section (fine stranded)	0.2 - 0.75 mm <sup>2</sup> , AWG 24-18
Strip length	8.0 + 1 mm
Conductor entry angle to the PCB	0 - 12° (depends on wire type and diameter)
Max. Ø of insulation	2.7 mm

### Material details

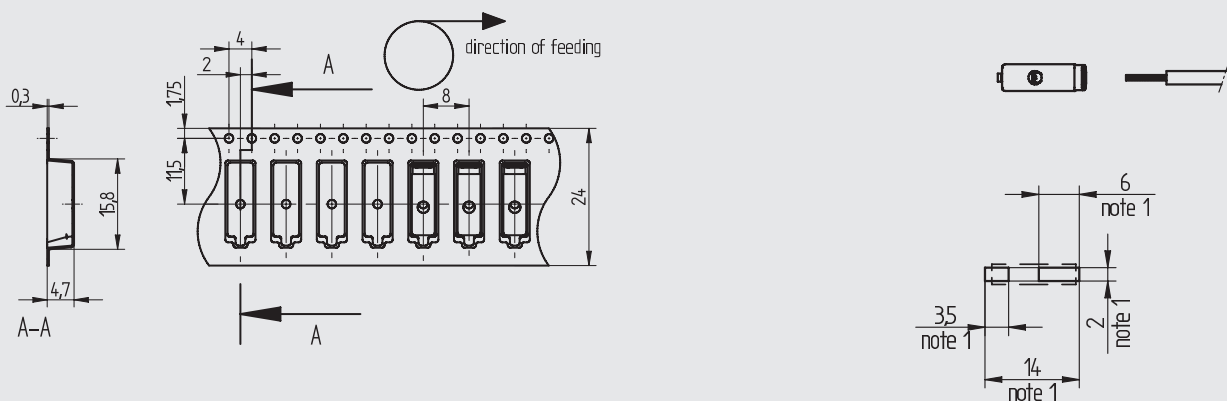
Temperature stability	-40 °C to + 105 °C
Flammability category, based on UL 94	V0
Insulating material group	I (CTI >600)
Insulating material	PPA (Polyphthalamid)

### Important processing notes

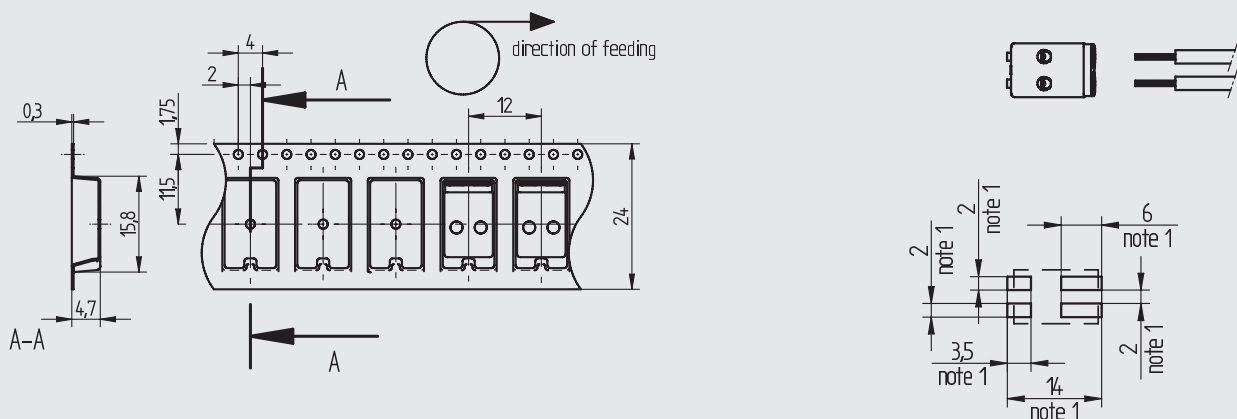
Soldering temperature higher 220°C < 60s  
Soldering temperature max. 260°C < 10s

Depending on the SMD soldering process and associated parameters a minor discoloration might occur. However, this will not influence the functionality.

#### 46.131.1001.50



#### 46.132.1001.50



Note 1: Recommended dimensions for solder mask - Recommended thickness of solder 0.15 mm

Note 2: Recommended Pick and Place area

General note: It is recommended to make an electrical connection between both poles of each polarity on the solder mask.