

Our lampholder for discharge lamps from 250 to 1000 Watts
G22 for OSRAM HCI-TM and HQI-TM lamps



Your Connection to Light

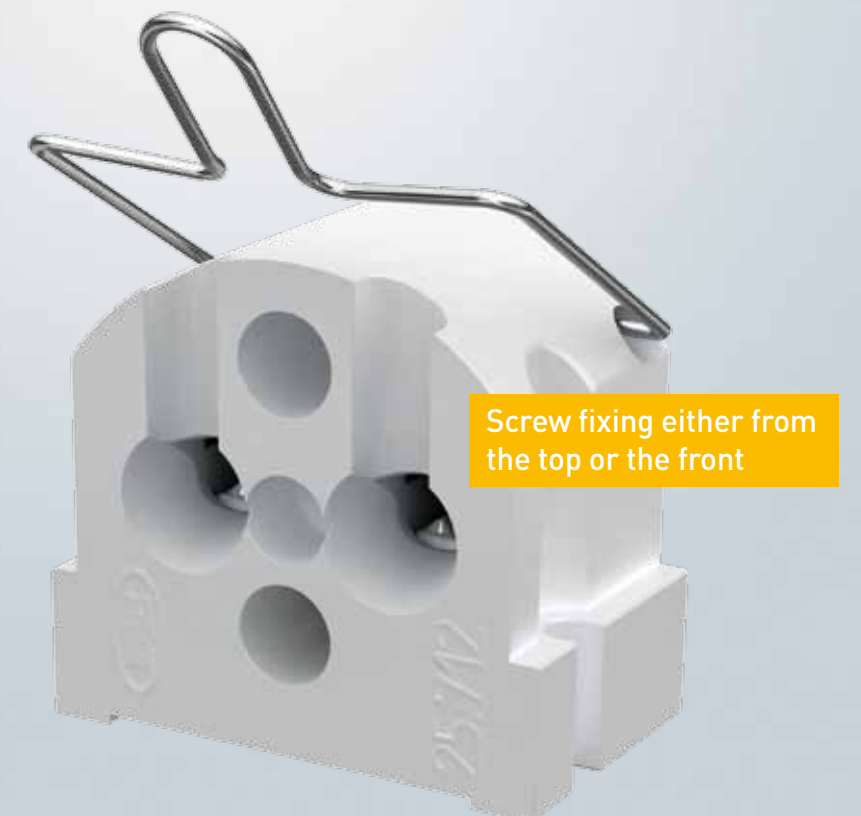


For an innovative lamp system! A first class lampholder, BJB's 26.712.

Lampholders G22 for OSRAM HCI-TM and HQI-TM lamps

Prerequisites...

- Lampholder base system for lamp base G22 with optional support clip
- Tool free lamp replacement
- T350 solid ceramic versions for highest thermal safety
- With screw fixing terminals or attached leads





BJB developed the lampholder **25.712 for lamp base G22** as an addition to the existing HID range, for use with discharge and halogen lamps of middle to high wattages.

These lampholders are intended for use in applications without hot re-ignition. Lampholders will be available with screw fixing terminals or with attached leads. On request, we will mount an additional support clip.

The solid ceramic system of our 25.712 with T350 and 20A ratings fulfils all requirements for the use of high wattage lamps in entertainment and outdoor applications

The aim of BJB was to offer a sophisticated version for the particularly compact lamp family HCI-TM and high wattage HQI-TM made by OSRAM (Radium) to the market. This series of lamps is designed for wattages from 250 to 1000 watts and is characterized by a significantly improved performance compared to currently available systems.

Another decisive advantage is that all lamp wattages are offered with the same focal height of 90 mm. Therefore, lighting manufacturers can use the same housing for different wattages.

Conclusion: The small size and the accurate alignment of the burner now allows a much more precise lighting design and at the same time an increased efficiency over conventional lamps with E40 lamp base. The new 25.712 is now the matching version made by BJB.



Advantage 1: compact dimensions

Advantage 2: the same focal height of 90 mm for all wattages



25.712. with screw fixing



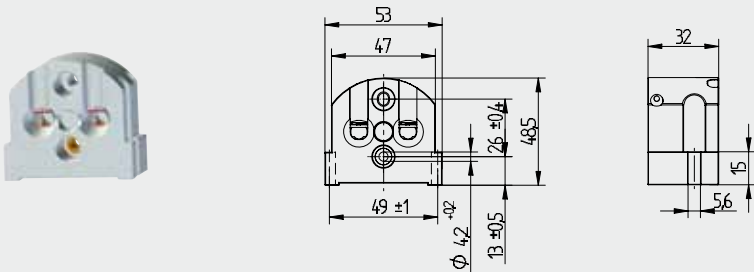
Lampholders for discharge lamps

25.712

G22




pkg. wt. part no.
144 173 g **25.712.2000.00**





Screw fixing
Housing: Ceramic
Connection: Screw terminals


- Screw fixing fom above: for screws with ø 4 mm
- Screw fixing from front: for screws with ø 5 mm

T 350



ø 2.5 - 6.0





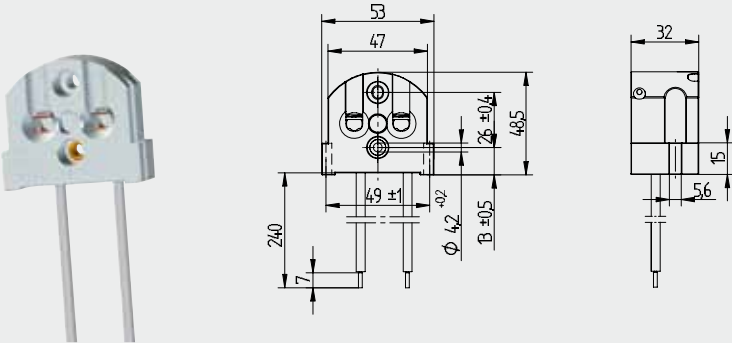


20 A
250 V



CAD

pkg. wt. part no.
144 173 g **25.712.2001.00**



Screw fixing
Housing: Ceramic
Wires: with 2 ignition wires, Cu tinned, 0.75 mm², with ferrule, Insulation: Silicone (max. 180° C), Free cable length: 240 mm

- Screw fixing fom above: for screws with ø 4 mm
- Screw fixing from front: for screws with ø 5 mm

T 350

20 A
250 V



CAD

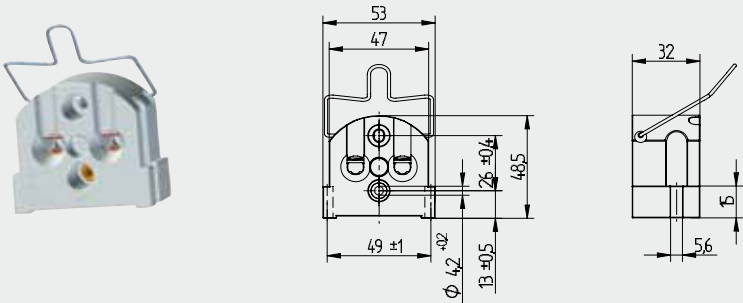
Lampholders for discharge lamps

25.712

G22




pkg. wt. part no.
144 173 g **25.712.1000.00**





Screw fixing
with retention clip
Housing: Ceramic
Connection: Screw terminals


- Screw fixing from above: for screws with ø 4 mm
- Screw fixing from front: for screws with ø 5 mm

T 350



ø 2.5 - 6.0





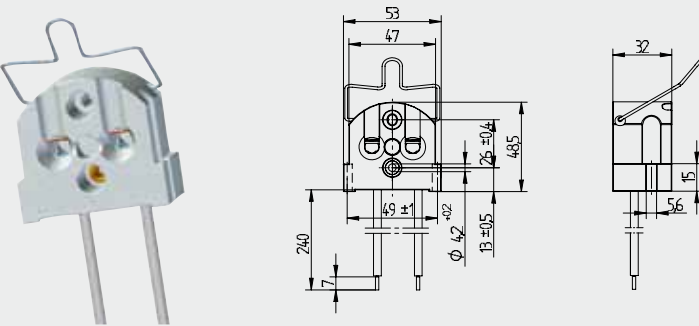


20 A
250 V



CAD

pkg. wt. part no.
144 173 g **25.712.1001.00**



Screw fixing
with retention clip
Housing: Ceramic
Wires: with 2 ignition wire, Cu tin plated, 0.75 mm², with ferrule, Insulation: silicone (max. 180° C), Free cable length: 240 mm

- Screw fixing from above: for screws with ø 4 mm
- Screw fixing from front: for screws with ø 5 mm

T 350

20 A
250 V

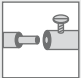


CAD

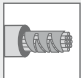
Symbols

T 350

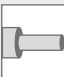
Temperature rating



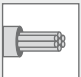
Screw terminals



For wire ends with ferrule to the maximum diameter stated




For solid conductors within the cross sectional range stated



For 7 stranded wire ends within the cross sectional range stated

20 A
250 V

Rating



Starting voltage

CAD

CAD data available

BJB GmbH & Co. KG · Werler Str. 1 · 59755 Arnsberg · Germany
Telephone +49 2932 982-0 · Fax +49 2932 982-8201
info@bjb.com · www.bjb.com



Your Connection to Light