

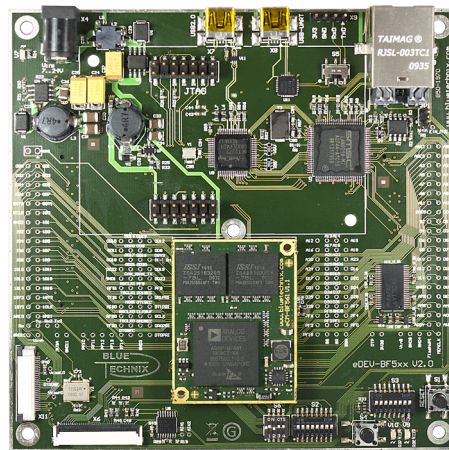
# BF561 Starter Package

Blackfin® Starter Kit with eCM-BF561



BLUETECHNIX  
Embedding Ideas

The eDEV-BF5xx Blackfin® Starter Package is a feature rich, low cost rapid development kit designed for rapid prototyping based on Analog Devices high performance dual core embedded processor ADSP-BF561. The starter package consists of the powerful Blackfin® based Core Module eCM-BF561 and the eDEV-BF5xx development board, which provides all interfaces on dedicated connectors and has all Core Module pins routed to solder pads which can be easily accessed by the developers. This allows customers to connect their own hardware and enables comfortable measurements. The eDEV-BF5xx supports the latest debugging interface from Analog Devices - ADI-SADA2 (Analog Devices Stand Alone Debug Agent) and features the latest extender socket (bottom side) for upcoming extender boards.



eDEV-BF5xx with connected eCM-BF561

based on 

## Highlights

- » ADSP BF561 Dual Core DSP
- » 128 MByte SDRAM up to 133Mhz
- » 32 MByte Flash
- » Optimized for parallel digital signal processing
- » Full featured carrier board included
- » Industrial SoM available

## Package Content

- » SoM - eCM-BF561
- » Carrier Board - eDEV-BF5xx
- » DC power cable
- » USB device cable

## Ordering Information

Order No.	Info
100-3400	Blackfin Evaluation Starter Package with eCM-BF561
100-1214-1	eCM-BF561
100-1215-1	eCM-BF561 Industrial

# BF561 Starter Package

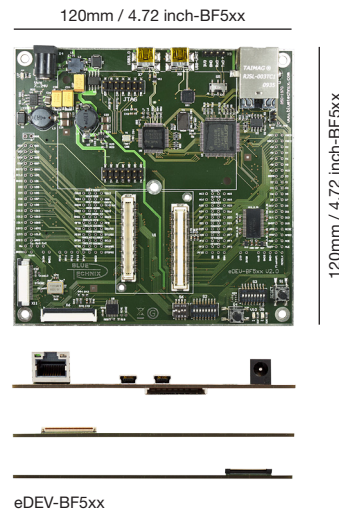
Blackfin® Starter Kit with eCM-BF561



**BLUETECHNIX**  
Embedding Ideas

## Feature Overview eDEV-BF5xx

<b>SUPPORTED CORE MODULES*</b>	eCM-BF561
<b>USB TO UART CONVERTER</b>	✓
<b>ETHERNET CONNECTOR</b>	✓
<b>USB 2.0 CONNECTOR</b>	✓
<b>CAMERA CONNECTOR</b>	BLT-ISM-Connector for ISM
<b>TFT-DISPLAY CONNECTOR</b>	EDT G- TFT Family Concept
<b>SUPPORTED TFT-DISPLAYS</b>	Various EDT G- TFTs (3.5" - 7.0")
<b>ADI-SADA 2 CONNECTOR</b>	✓
<b>SD CARD SOCKET</b>	✓
<b>ADDITIONAL FEATURES</b>	All pins of the connectors are available as solder pads
<b>DIMENSIONS</b>	120 x 120mm

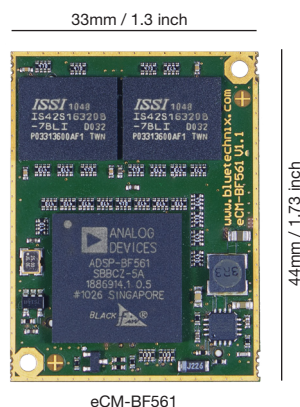


eDEV-BF5xx

\*Further CMs are supported by adapters.  
Goto: <http://www.bluetechnix.com/goto/eDEV-bf5xx>

## Feature Overview eCM-BF561

<b>PROCESSOR</b>	ADSP-BF561 Blackfin® embedded dual core processor
<b>CLOCK</b>	Up to 2 x 600MHz
<b>L1 cache (per core)</b>	16kByte instruction and 32kByte data
<b>L2 cache (shared)</b>	128kByte
<b>RAM</b>	128MByte SDRAM up to 133Mhz
<b>FLASH</b>	32MByte NOR
<b>TEMPERATURE RANGE</b>	Commercial (0°C to +70°C) Industrial (-40 to +85°C)
<b>Additional</b>	On-Board core voltage regulator  Low voltage reset circuit
<b>DIMENSIONS</b>	33 x 44mm



eCM-BF561

BLUETECHNIX Mechatronische Systeme GmbH  
Waichhausenstraße 3/19 | 1140 Wien, Austria |  
+43 (1) 9142091 x 0 | +43 (1) 9142091 x 99  
[www.bluetechnix.com](http://www.bluetechnix.com) | [office@bluetechnix.com](mailto:office@bluetechnix.com)