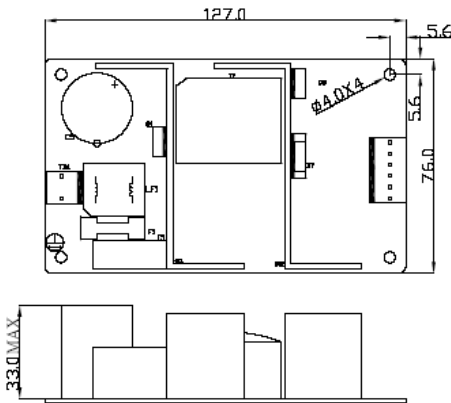




<http://www.bobbintron.com>

BOBBINTRON ELECTRICAL CORPORATION

BO60XXX Series 60W Open Frame Power Supply (Single and Multi Output)



Electrical specifications :

Input:

Voltage..... 100-240VAC
 Current.....1.8A rms Max
 Frequency.....50-60 Hz

Output:

Voltage (Vo)..... (see table)
 Tolerance.....+/- 5% for Vo1
 Power (Po).....60W

Hold up time.....8mS min at Full Load, 115VAC

Over voltage protection.....Built-in

Short circuit protection.....Hiccup Mode, Auto Recovery

Efficiency.....70% min, at Full Load and 115VAC

Ripple/Noise (Vp-p).....2% (20M Hz Bandwidth)

Calculated MTBF..... Over 100 Khr at 25C

Output Electronic Specifications:

Model No.	Po	Vo	Io
BO60112	60W	12.0VDC	5.0A
BO60115	60W	15.0VDC	4.0A
BO60124	60W	24.0VDC	2.5A
BO60329	60W	+5.0VDC	6.0A
		+12.0VDC	2.0A
		-12.0VDC	0.5A
BO60341	60W	+5.0VDC	6.0A
		+24VDC	1.0A
		-12VDC	0.5A

Feature:

Universal Input 100V to 240VAC
 3P-2 3.96mm Molex Input
 6P 3.96mm Molex Output
 Single and Multi-Output

Environmental :

Operating Temperature:
 0 deg. C to 50 deg. C ambient
 Storage Temperature:
 -20 deg. C to 80 deg.C

EMI:

Meet FCC Class B and
 CISPR 22 Class B

Safety:

UL/cUL/CE