

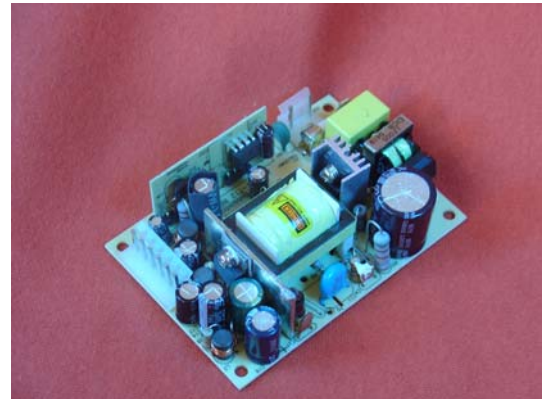
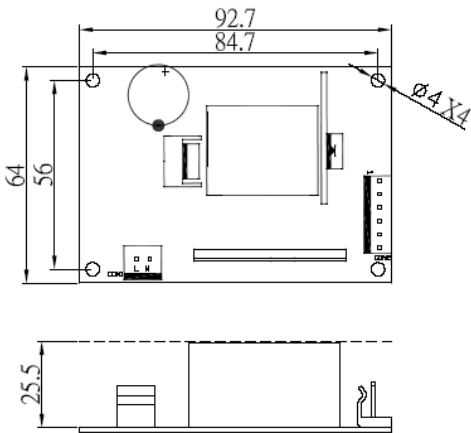


<http://www.bobbintron.com>

# BOBBINTRON ELECTRICAL CORPORATION

AD0251-XX Series

25W AC – DC Open Frame Multi-output Power Supply



## Electrical specifications :

### Input:

Voltage.....100 – 240 VAC

Current.....0.7A rms Max

Frequency.....

### Output:

Voltage (Vo)..... (see table)

Tolerance.....+/- 5% for Vo1

Power (Po).....25W

Hold up time.....

Over voltage protection.....Built-in

Short circuit protection.....Hiccup Mode, Auto Recovery

Efficiency.....70% min, at Full Load and 20VDC

Ripple/Noise (Vp-p).....2% (20M Hz Bandwidth)

Calculated MTBF..... Over 100 Khr at 25C

## Output Electronic Specifications:

Model No.	Po	Vo	Io
AD0251-T12	25W	5.0VDC	3.0A
		12.0VDC	0.5A
		-12VDC	0.2A
AD0251-T12A	25W	5.0VDC	2.0A
		12.0VDC	1.0A
		-12VDC	0.2A

## Feature:

Universal Input 100V to 240VAC

3P-2 3.96mm Molex Input

6P 3.96mm Molex Output

Multi Output Power Supply

## Environmental :

Operating Temperature:

0 deg. C to 50 deg. C ambient

Storage Temperature:

-20 deg. C to 80 deg.C

## EMI:

Meet FCC Class B and

CISPR 22 Class B

## Safety:

UL950 CE