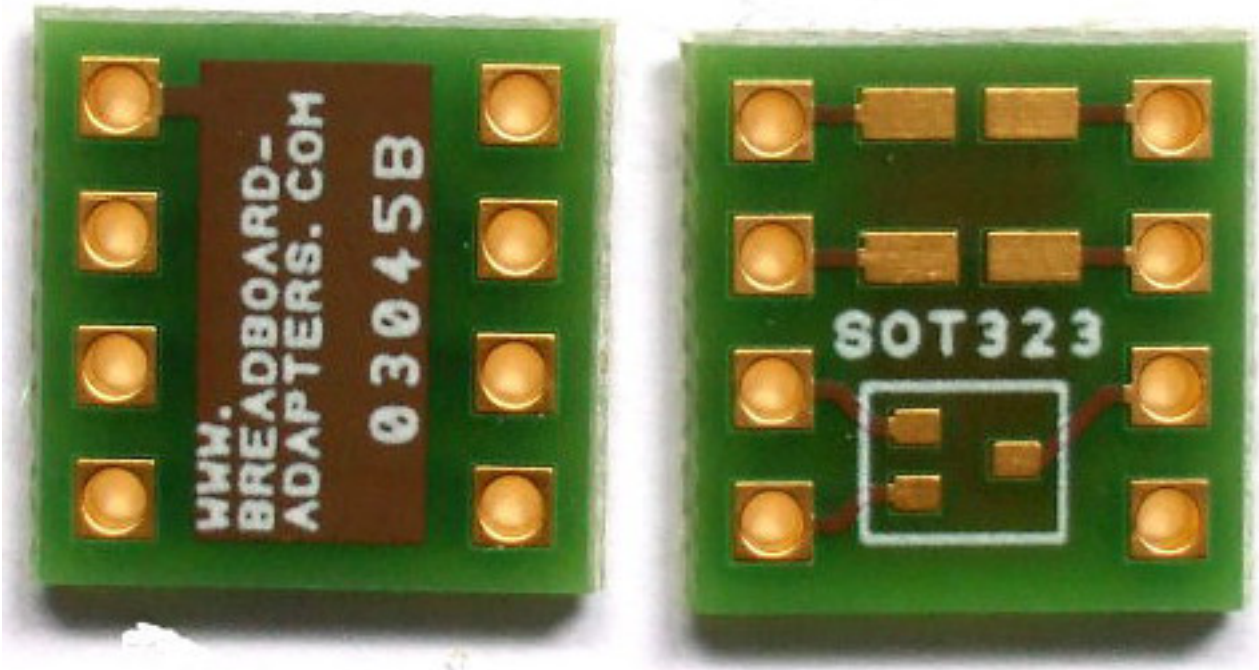


SOT 323 / SC70-3 / UMT3 SMD CIRCUIT BOARD DIP-8 ADAPTER

Multiadapter board for testing prototypes with up:

- two components with Micromelf, SOD110, SOD323, SOD523, SOD723, 0603, 0805 packages;
- one component with SOT323, UMT3, SC70-3, SOT523, SC89-3, SOT663 packages;

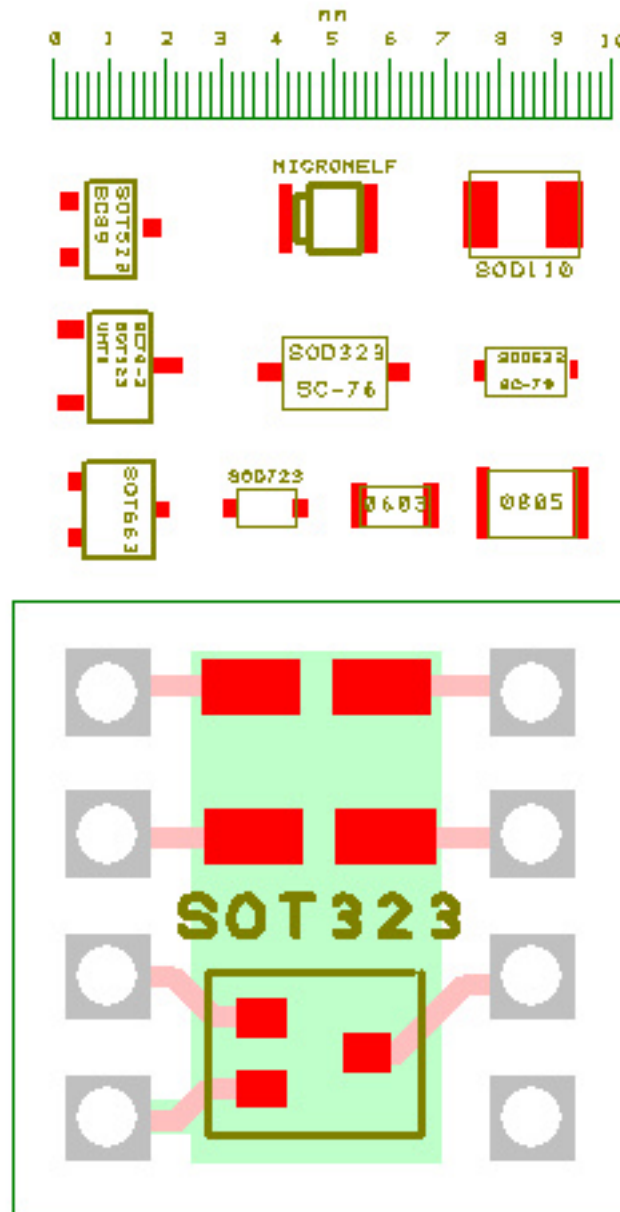


Bottom (ground layer) and top views of our adapter

Our breadboard compatible as DIP-8:

| | |
|------------------------------------|----------------------|
| Pitch Spacing: | 2.54mm |
| Distance between connectors | 7,61 mm |
| Board Material: | FR4 Epoxy Fibreglass |
| Hole Diameter: | 0,95 mm |
| Board Height: | 11mm |
| Board Width: | 11mm |
| Board Thickness: | 1.5mm |
| Copper Coating : | chem. Niquel Gold |
| Copper Thickness: | 35µm |
| No. of Copper Sides: | 2 |
| Solder mask | yes |
| ROHS | Conform |

CAD view : Simulation of the SMD packages that can be used in this adapter, the adapter pcb and a 10mm rule, all in the same scale.



Application of this adapter: board for hand soldering prototypes of small SMD circuits with one transistor or fet and two resistors, capacitors, or diodes.

OUR SITE

OUR E-SHOP

www.breadboard-adapters.com