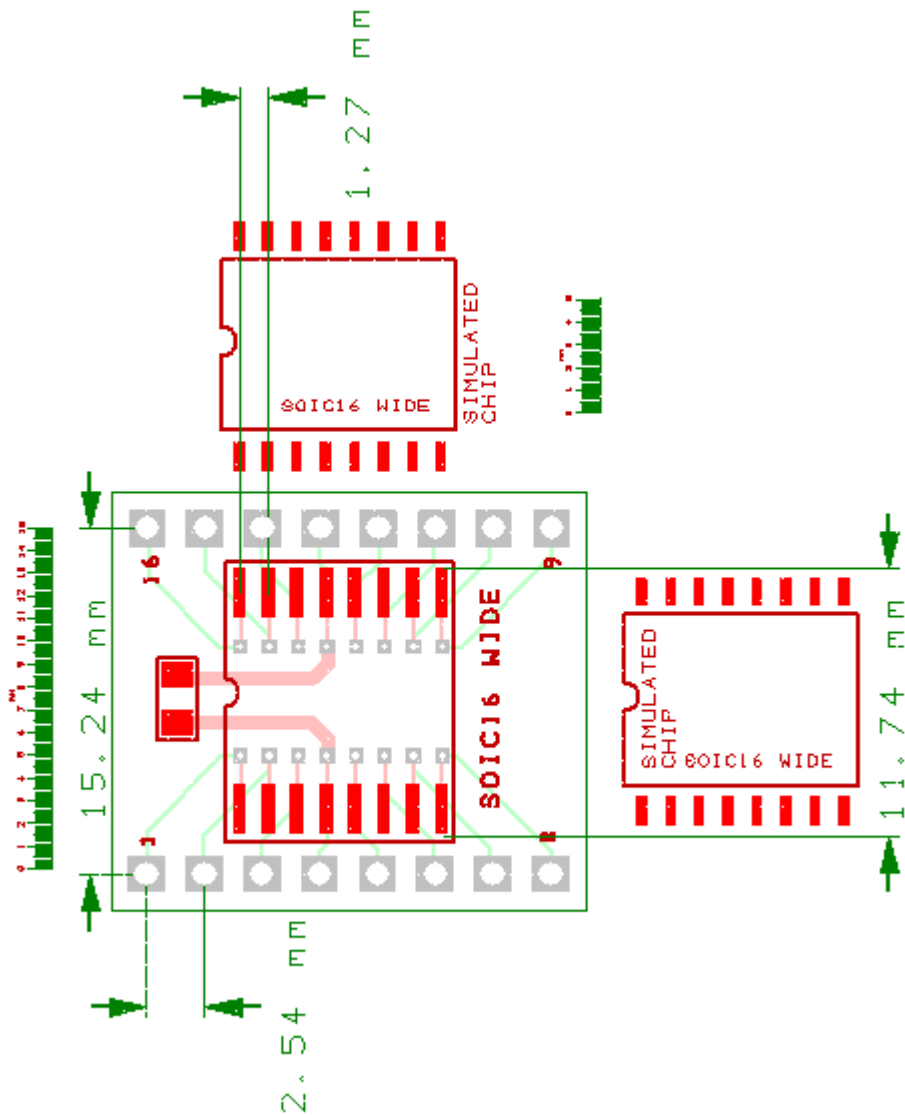


# SOIC16 WIDE ADAPTER

**Breadboard adapter for SOIC 16pin wide devices:**

**PCB dimensions:** 18,5 x 20,9 x 1,5 mm



**Our reference: 16587A**

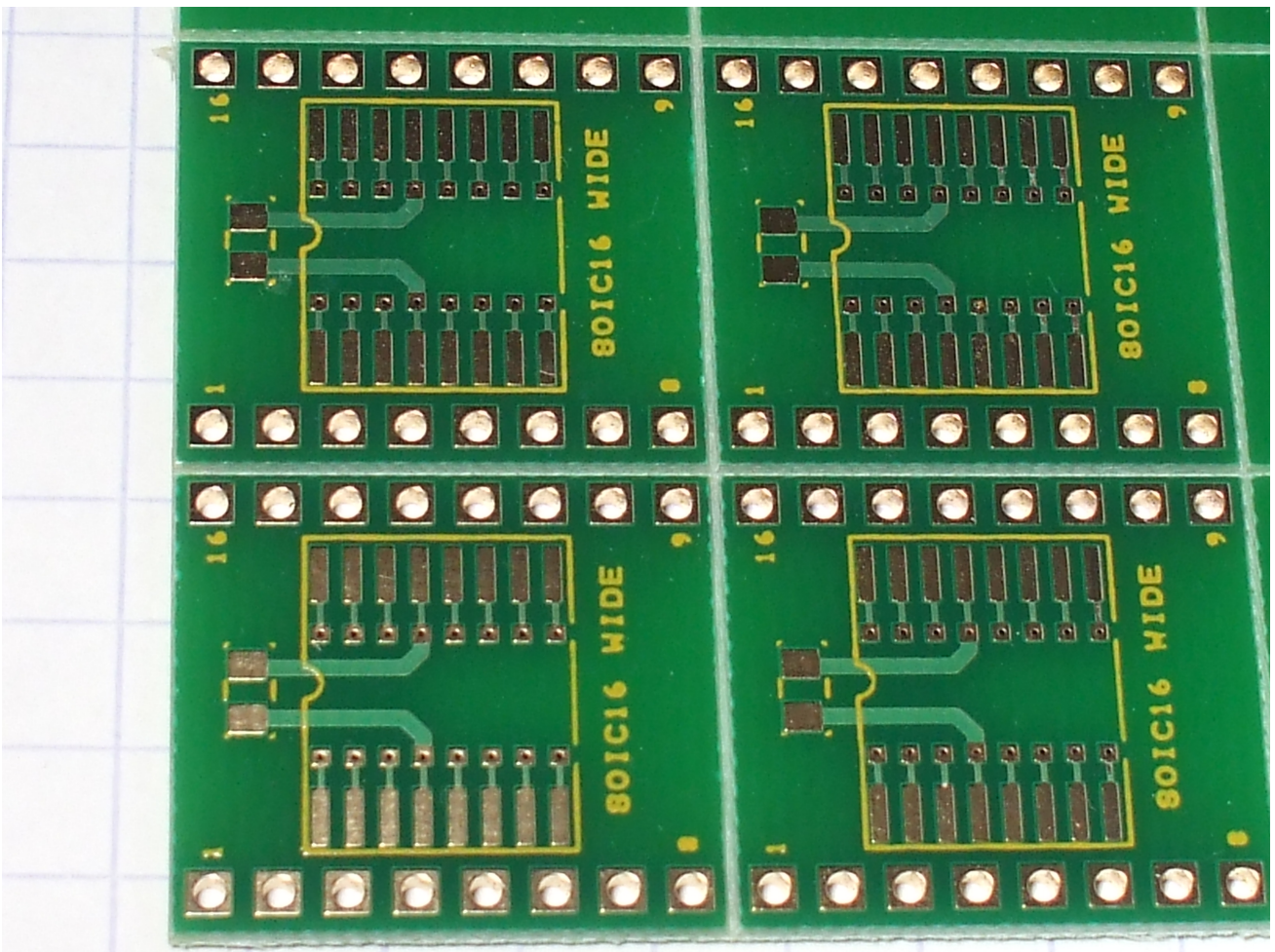
**Product description:** Breadboard adapter for SOIC16 wide devices. Accept row connectors with 2,54 mm pitch: is breadboard compatible.

**Technology:** Plated through FR4 pcb, with solder mask to avoid shorts between pads when hand soldered, as shown in photo. All holes are plated through. The surface of pads in this adapter, is chemical gold plated.

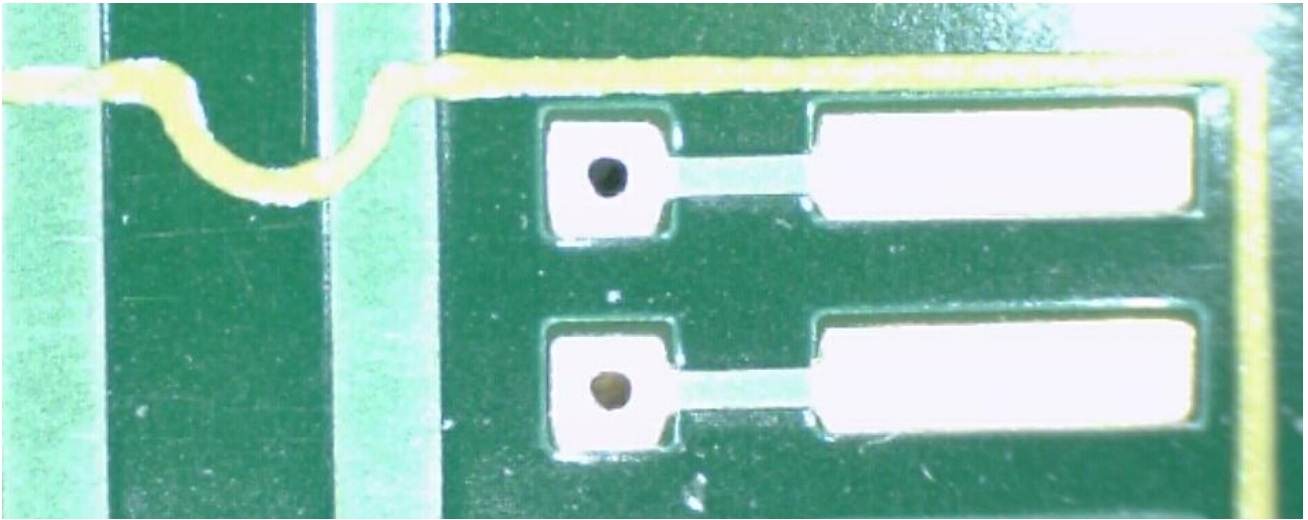
**PCB contour:** the pcb contour is scored easy to break.

**Hand soldering:** should be used a liquid flux, for easy soldering to the gold surface.

**Handling:** is important before soldering, to avoid fingerprints over the gold plated surface of the pads.



Above photo shows 4 adapters for SOIC16W in a scored pcb.



Above photo is a close up to show the solder mask, with protecting windows around the pads. Solder mask exist only around pads and vias and is used to minimize the risk of building solder bridges, between pads, when the SOIC is hand soldered.

**Links:**

[http://www.onsemi.com/pub\\_link/Collateral/751BH.PDF](http://www.onsemi.com/pub_link/Collateral/751BH.PDF)

<http://www.fairchildsemi.com/dwg/M1/M16B.pdf>

[http://www.analog.com/static/imported-files/packages/PKG\\_PDF/SOIC\\_WIDE\\_\(RW\)/RW\\_16.pdf](http://www.analog.com/static/imported-files/packages/PKG_PDF/SOIC_WIDE_(RW)/RW_16.pdf)

[http://pdfserv.maxim-ic.com/land\\_patterns/90-0107.PDF](http://pdfserv.maxim-ic.com/land_patterns/90-0107.PDF)

<http://www.national.com/packaging/mkt/m16b.pdf>

<http://www.irf.com/package/cic/16leadsoicwidepo.pdf>

<http://www.skyworksinc.com/uploads/documents/200123K.pdf>

Please visit our site for updates and new types:

<http://www.breadboard-adapters.com/>

To any questions or feedback please email:

[sales@breadboard-adapters.com](mailto:sales@breadboard-adapters.com)