

Pole Mount Bracket

CI-808 / CI-815



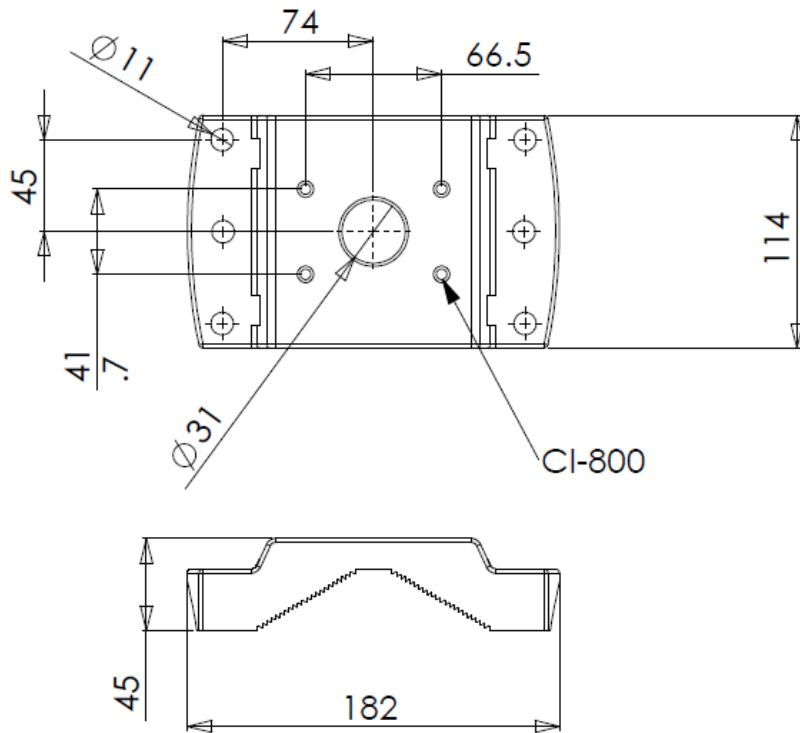
CI-808

Item NO.	CI-808 Pole Mount Bracket
Construction	Die Cast Al-alloy Material
Bracket Dimensions	182 L x 45 H x 114 W mm
Coating	Beige and white epoxy powder coating
Max Load.	20KG
Packing	18pcs/CTN
Weight	1.2KG
Application Use	For pole
Suitable for poles with diameter 50mm~130mm	
Certification:	RoHS Compliant/CE
Fit for different type of camera housing bracket with Stainless tube thread and screws	

CI-815

Item NO.	CI-815 Pole Mount Bracket
Construction	Die Cast Al-alloy Material
Bracket Dimensions	277.4 L x 75 H x 168.1 W mm
Coating	Beige and white epoxy powder coating
Max Load.	30KG
Packing	8pcs/CTN
Weight	2.4KG
Application Use	For pole
Suitable for poles with diameter 70 mm to 120mm & 120mm to 230mm	
Certification:	RoHS Compliant/CE
Fit for different type of camera housing bracket with Stainless tube thread and screws	

CI-808



CI-815

