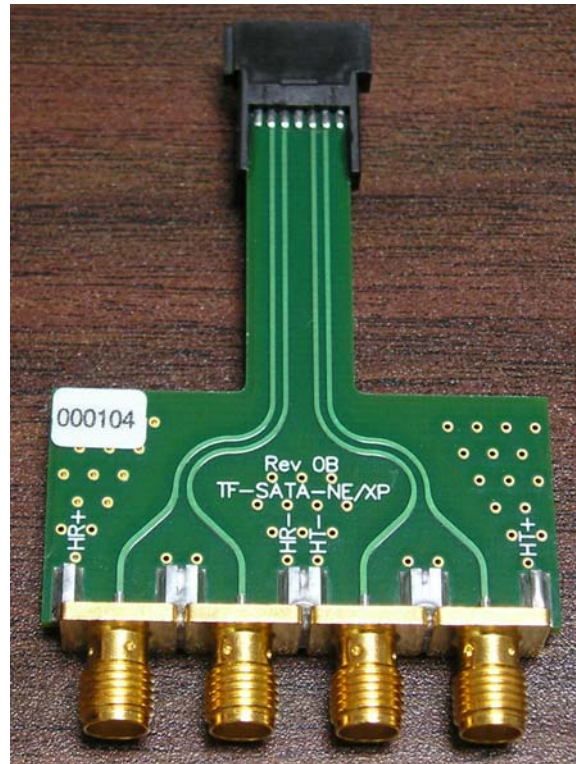


# TF-SATA-NE-XP

## Serial ATA Compliance Test Fixture



### Features

- TF-SATA-NE-XP facilitates **near-end** connection to the Serial ATA host or device under test
- 1.5 Gb/s and 3 Gb/s bus signaling rates supported (see TF-SATA-NE-ZP for similar 6 Gb/s-capable test fixture)
- Female SATA connector utilized, the same as is present at the end of an SATA cable
- Test fixture plugs in to the host or device Serial ATA connector, in place of the Serial ATA cable
- Differential 100 Ohm controlled-impedance PCB design
- Side-launch SMA connectors result in reduced torque from SMA cable connections, and reduced stress on Serial ATA plugs and connectors
- Lower-priced predecessor of the TF-SATA-NE-ZP test fixture, described below
- Facilitates Serial ATA compliance testing when used with Tektronix® DPO/DSA70804 digital oscilloscopes and P7380SMA and P7313SMA probes, or other manufacturers' DSOs and probes
- Facilitates Serial ATA compliance testing when used with Tektronix® Serial ATA Test Utility software
- **Note:** Refer to [www.c-h-s.com/tf-sata.shtml](http://www.c-h-s.com/tf-sata.shtml) regarding a notice concerning HT/HR silkscreen mislabeling

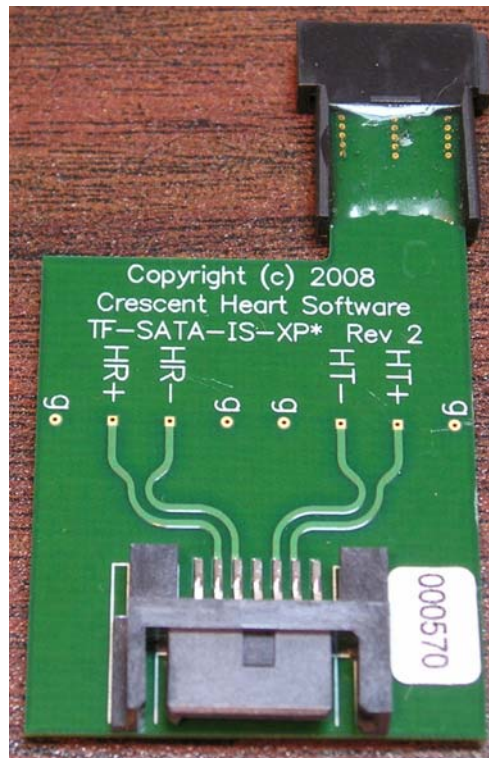
### Contact Crescent Heart Software

- Internet: [www.c-h-s.com](http://www.c-h-s.com); E-mail: [sales@c-h-s.com](mailto:sales@c-h-s.com); Voice: (+1)503-232-2232; Facsimile: (+1)503-232-2255
- Crescent Heart Software, a Tektronix® Embedded Systems Tools Partner and a member of the Tektronix® Logic Analyzer Third Party Developer team, is headquartered in Portland, Oregon USA. Crescent Heart Software has been a member of the Serial ATA 1.0 and Serial ATA II Working Groups.
- Information presented herein is subject to change without notice (datasheet Revision T, November 2010)

• **HARDWARE & SOFTWARE PRODUCTS FOR USE WITH TEKTRONIX® LOGIC ANALYZERS & OSCILLOSCOPES** •

# TF-SATA-IS-XP

## Serial ATA Compliance Test Fixture



### Features

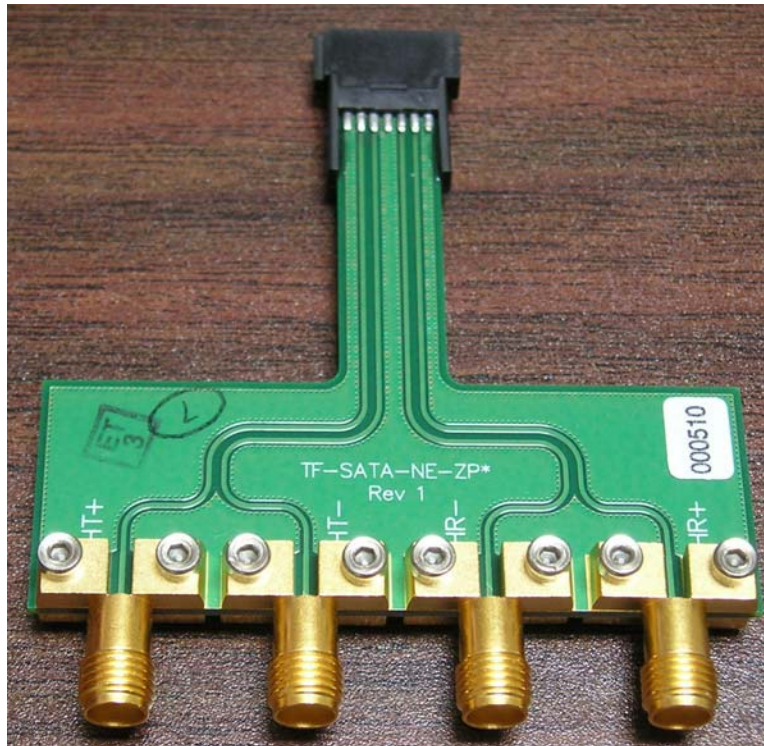
- TF-SATA-IS-XP facilitates **in-system** monitoring of Serial ATA data signals
- 1.5 Gb/s, 3 Gb/s and 6 Gb/s bus signaling rates supported
- Male and female SATA connectors utilized
- Test fixture plugs in to the host or device Serial ATA connector, and connects to the device or host via a Serial ATA cable (not provided)
- In-system access provided to all four Serial ATA differential signals
- Accommodates differential probe connections through 0.15 inch-spaced (3,8 mm-spaced) PCB vias
- Accommodates non-differential probe connections to ground through 0.15 inch-spaced (3,8 mm-spaced) PCB vias
- Unique three-layer differential 100 Ohm controlled-impedance PCB design
- Facilitates monitoring Serial ATA data signals in-system when used with appropriate high-performance digital oscilloscopes and differential probes
- **Note:** Refer to [www.c-h-s.com/tf-sata.shtml](http://www.c-h-s.com/tf-sata.shtml) regarding a notice concerning possible HT/HR silkscreen mislabeling

### Contact Crescent Heart Software

- Internet: [www.c-h-s.com](http://www.c-h-s.com); E-mail: [sales@c-h-s.com](mailto:sales@c-h-s.com); Voice: (+1)503-232-2232; Facsimile: (+1)503-232-2255
- Crescent Heart Software, a Tektronix® Embedded Systems Tools Partner and a member of the Tektronix® Logic Analyzer Third Party Developer team, is headquartered in Portland, Oregon USA. Crescent Heart Software has been a member of the Serial ATA 1.0 and Serial ATA II Working Groups.
- Information presented herein is subject to change without notice (datasheet Revision T, November 2010)

# TF-SATA-NE-ZP

## Serial ATA Compliance Test Fixture



### Features

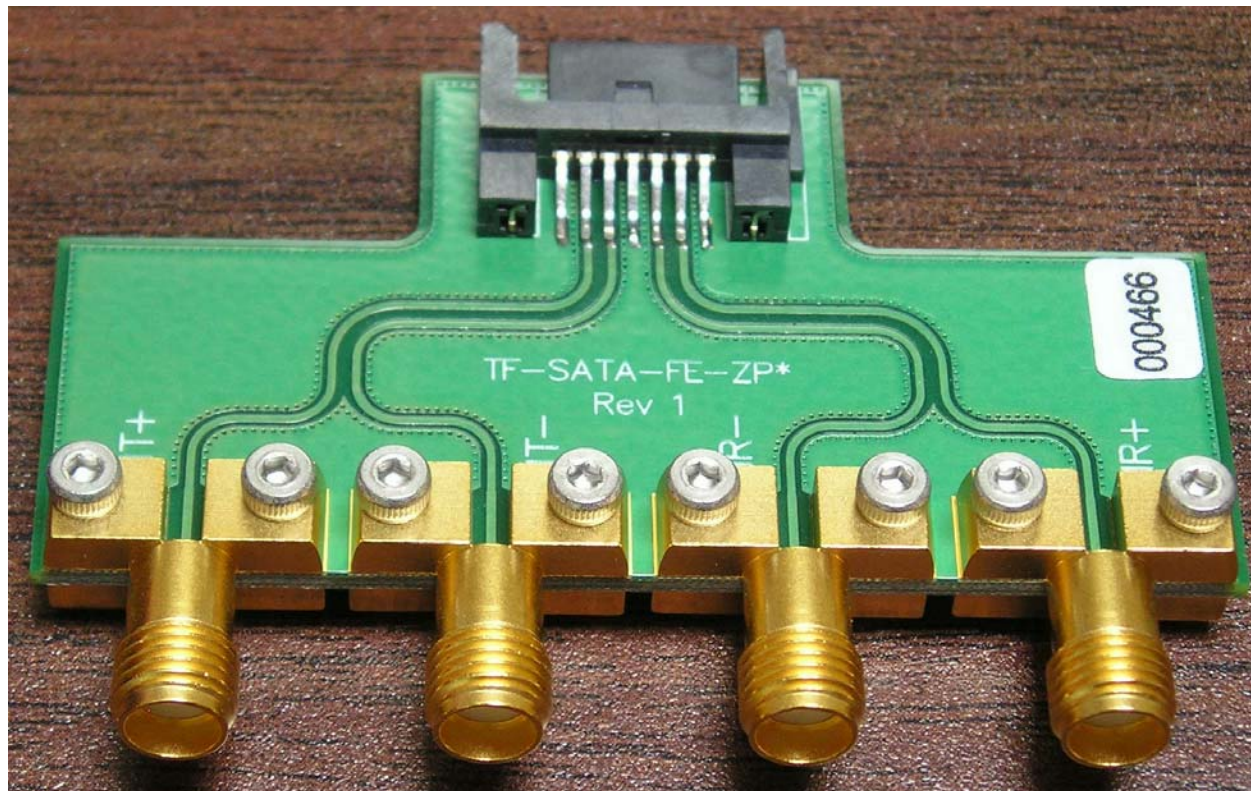
- TF-SATA-NE-ZP facilitates **near-end** connection to the Serial ATA host or device under test
- 1.5 Gb/s, 3 Gb/s and 6 Gb/s bus signaling rates supported, designed to meet or exceed SATA electrical specifications
- Female SATA connector utilized, the same as is present at the end of an SATA cable
- Test fixture plugs in to the host or device Serial ATA connector, in place of the Serial ATA cable
- Differential 100 Ohm tight-tolerance controlled-impedance grounded coplanar waveguide (GCPW) PCB design
- High-performance side-launch SMA connectors result in reduced torque from SMA cable connections, and reduced stress on Serial ATA plugs and connectors
- Complementary companion to TF-SATA-FE-ZP test fixture
- Facilitates Serial ATA compliance testing when used with Tektronix® DPO/DSA70804 digital oscilloscopes and P7380SMA and P7313SMA probes, or other manufacturers' DSOs and probes
- Facilitates Serial ATA compliance testing when used with Tektronix® Serial ATA Test Utility software
- **Note:** Refer to [www.c-h-s.com/tf-sata.shtml](http://www.c-h-s.com/tf-sata.shtml) regarding a notice concerning possible HT/HR silkscreen mislabeling

### Contact Crescent Heart Software

- Internet: [www.c-h-s.com](http://www.c-h-s.com); E-mail: [sales@c-h-s.com](mailto:sales@c-h-s.com); Voice: (+1)503-232-2232; Facsimile: (+1)503-232-2255
- Crescent Heart Software, a Tektronix® Embedded Systems Tools Partner and a member of the Tektronix® Logic Analyzer Third Party Developer team, is headquartered in Portland, Oregon USA. Crescent Heart Software has been a member of the Serial ATA 1.0 and Serial ATA II Working Groups.
- Information presented herein is subject to change without notice (datasheet Revision T, November 2010)

# TF-SATA-FE-ZP

## Serial ATA Compliance Test Fixture



### Features

- TF-SATA-FE-ZP facilitates **far-end** connection to the Serial ATA host or device under test
- 1.5 Gb/s, 3 Gb/s and 6 Gb/s bus signaling rates supported, designed to meet or exceed SATA electrical specifications
- Male SATA connector utilized, the same as is present in a SATA host or device
- Test fixture connects to the far end of the host or device Serial ATA cable
- Differential 100 Ohm tight-tolerance controlled-impedance grounded coplanar waveguide (GCPW) PCB design
- High-performance side-launch SMA connectors result in reduced torque from SMA cable connections
- Complementary companion to TF-SATA-NE-ZP test fixture
- Facilitates Serial ATA compliance testing when used with Tektronix® DPO/DSA70804 digital oscilloscopes and P7380SMA and P7313SMA probes, or other manufacturers' DSOs and probes
- Facilitates Serial ATA compliance testing when used with Tektronix® Serial ATA Test Utility software
- **Note:** Refer to [www.c-h-s.com/tf-sata.shtml](http://www.c-h-s.com/tf-sata.shtml) regarding a notice concerning possible HT/HR silkscreen mislabeling

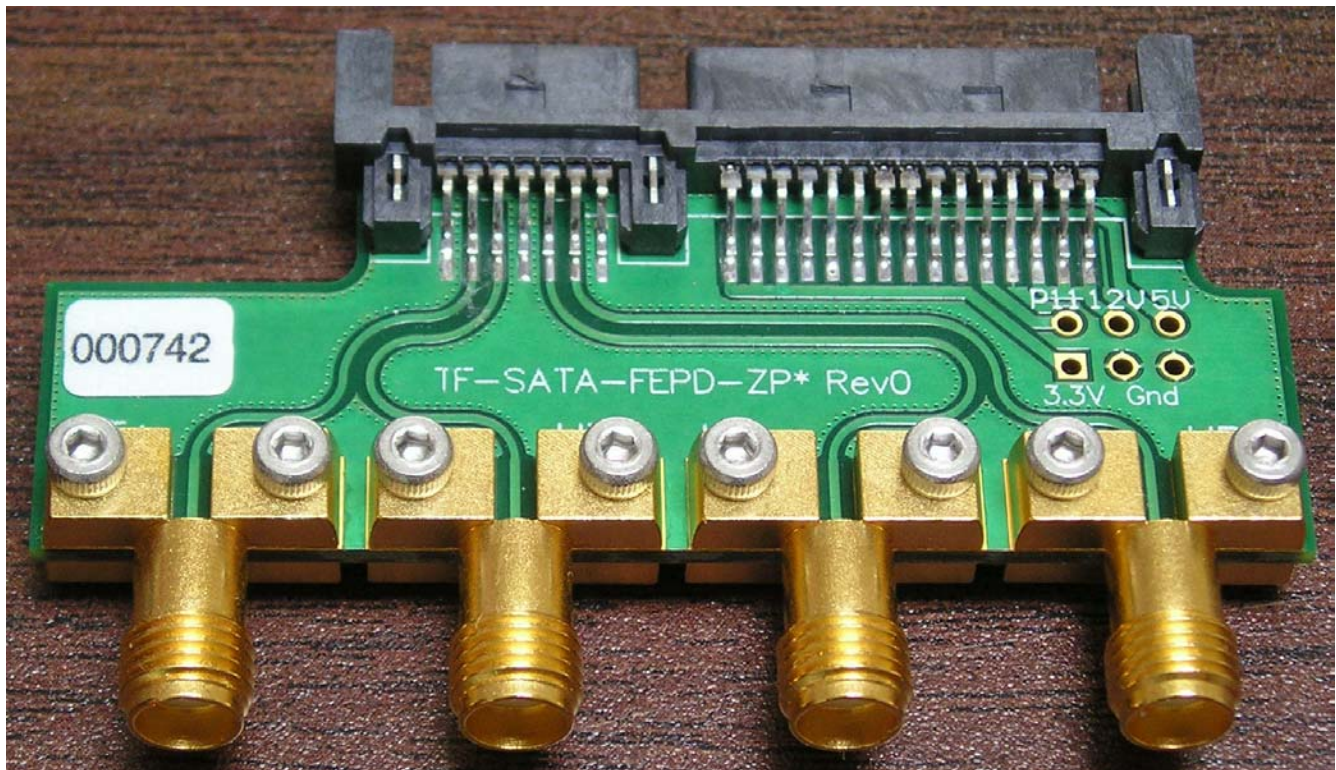
### Contact Crescent Heart Software

- Internet: [www.c-h-s.com](http://www.c-h-s.com); E-mail: [sales@c-h-s.com](mailto:sales@c-h-s.com); Voice: (+1)503-232-2232; Facsimile: (+1)503-232-2255
- Crescent Heart Software, a Tektronix® Embedded Systems Tools Partner and a member of the Tektronix® Logic Analyzer Third Party Developer team, is headquartered in Portland, Oregon USA. Crescent Heart Software has been a member of the Serial ATA 1.0 and Serial ATA II Working Groups.
- Information presented herein is subject to change without notice (datasheet Revision T, November 2010)

• **HARDWARE & SOFTWARE PRODUCTS FOR USE WITH TEKTRONIX® LOGIC ANALYZERS & OSCILLOSCOPES** •

# TF-SATA-FEPD-ZP

## Serial ATA Compliance Test Fixture



### Features

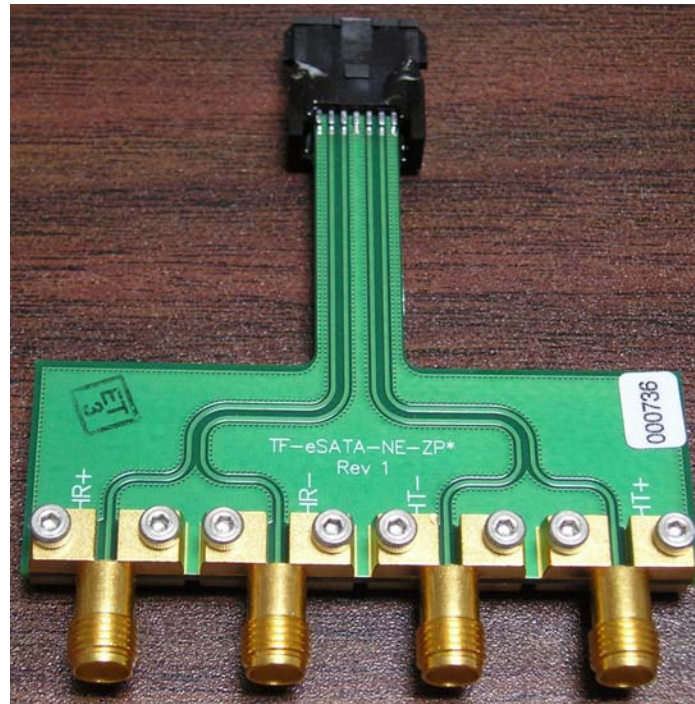
- TF-SATA-FEPD-ZP facilitates **power-data** connection to the Serial ATA laptop host under test
- 1.5 Gb/s, 3 Gb/s and 6 Gb/s bus signaling rates supported, designed to meet or exceed SATA electrical specifications
- Utilizes a male SATA connector (as do the other "FE" test fixtures) which additionally supports power connections, as is present in a SATA laptop drive
- Test fixture connects to the Serial ATA laptop host
- Differential 100 Ohm tight-tolerance controlled-impedance grounded coplanar waveguide (GCPW) PCB design
- High-performance side-launch SMA connectors result in reduced torque from SMA cable connections
- Provides power connection test points
- Facilitates Serial ATA compliance testing when used with Tektronix® DPO/DSA70804 digital oscilloscopes and P7380SMA and P7313SMA probes, or other manufacturers' DSOs and probes
- Facilitates Serial ATA compliance testing when used with Tektronix® Serial ATA Test Utility software

### Contact Crescent Heart Software

- Internet: [www.c-h-s.com](http://www.c-h-s.com); E-mail: [sales@c-h-s.com](mailto:sales@c-h-s.com); Voice: (+1)503-232-2232; Facsimile: (+1)503-232-2255
- Crescent Heart Software, a Tektronix® Embedded Systems Tools Partner and a member of the Tektronix® Logic Analyzer Third Party Developer team, is headquartered in Portland, Oregon USA. Crescent Heart Software has been a member of the Serial ATA 1.0 and Serial ATA II Working Groups.
- Information presented herein is subject to change without notice (datasheet Revision T, November 2010)

# TF-eSATA-NE-ZP

## External Serial ATA Compliance Test Fixture



### Features

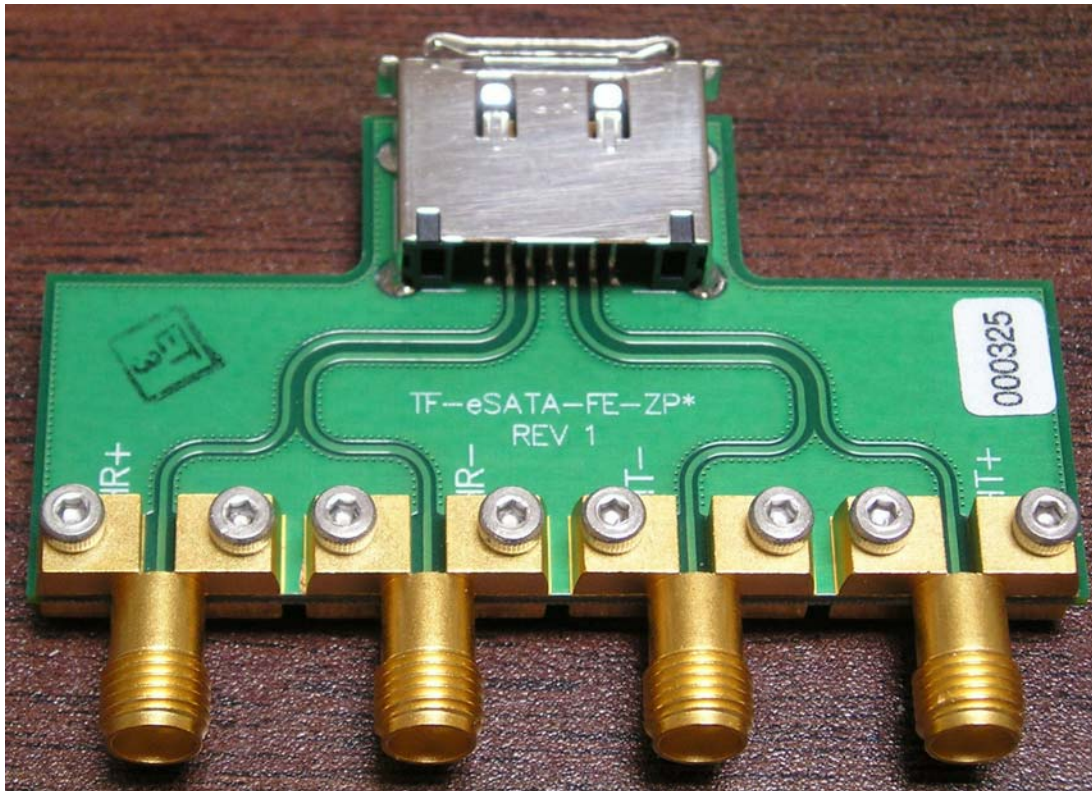
- TF-eSATA-NE-ZP facilitates **near-end** connection to the External Serial ATA host or device under test
- 1.5 Gb/s, 3 Gb/s and 6 Gb/s bus signaling rates supported, designed to meet or exceed SATA electrical specifications
- Female External Serial ATA connector utilized, the same as is present at the end of an External Serial ATA cable
- Test fixture plugs in to the host or device External Serial ATA connector, in place of the External Serial ATA cable
- Mechanical reinforcement of the External Serial ATA connector for maximum durability
- Differential 100 Ohm tight-tolerance controlled-impedance grounded coplanar waveguide (GCPW) PCB design
- High-performance side-launch SMA connectors result in reduced torque from SMA cable connections, and reduced stress on External Serial ATA plugs and connectors
- Complementary companion to TF-eSATA-FE-ZP test fixture
- Facilitates Serial ATA compliance testing when used with Tektronix® DPO/DSA70804 digital oscilloscopes and P7380SMA and P7313SMA probes, or other manufacturers' DSOs and probes
- Facilitates Serial ATA compliance testing when used with Tektronix® Serial ATA Test Utility software
- **Note:** Refer to [www.c-h-s.com/tf-sata.shtml](http://www.c-h-s.com/tf-sata.shtml) regarding a notice concerning possible HT/HR silkscreen mislabeling

### Contact Crescent Heart Software

- Internet: [www.c-h-s.com](http://www.c-h-s.com); E-mail: [sales@c-h-s.com](mailto:sales@c-h-s.com); Voice: (+1)503-232-2232; Facsimile: (+1)503-232-2255
- Crescent Heart Software, a Tektronix® Embedded Systems Tools Partner and a member of the Tektronix® Logic Analyzer Third Party Developer team, is headquartered in Portland, Oregon USA. Crescent Heart Software has been a member of the Serial ATA 1.0 and Serial ATA II Working Groups.
- Information presented herein is subject to change without notice (datasheet Revision T, November 2010)

# TF-eSATA-FE-ZP

## External Serial ATA Compliance Test Fixture



### Features

- TF-eSATA-FE-ZP facilitates **far-end** connection to the External Serial ATA host or device under test
- 1.5 Gb/s, 3 Gb/s and 6 Gb/s bus signaling rates supported, designed to meet or exceed SATA electrical specifications
- Male External Serial ATA connector utilized, the same as is present in an External Serial host or device
- Test fixture connects to the far end of the host or device External Serial ATA cable
- Differential 100 Ohm tight-tolerance controlled-impedance grounded coplanar waveguide (GCPW) PCB design
- High-performance side-launch SMA connectors result in reduced torque from SMA cable connections
- Complementary companion to TF-eSATA-NE-ZP test fixture
- Facilitates Serial ATA compliance testing when used with Tektronix® DPO/DSA70804 digital oscilloscopes and P7380SMA and P7313SMA probes, or other manufacturers' DSOs and probes
- Facilitates Serial ATA compliance testing when used with Tektronix® Serial ATA Test Utility software
- **Note:** Refer to [www.c-h-s.com/tf-sata.shtml](http://www.c-h-s.com/tf-sata.shtml) regarding a notice concerning possible HT/HR silkscreen mislabeling

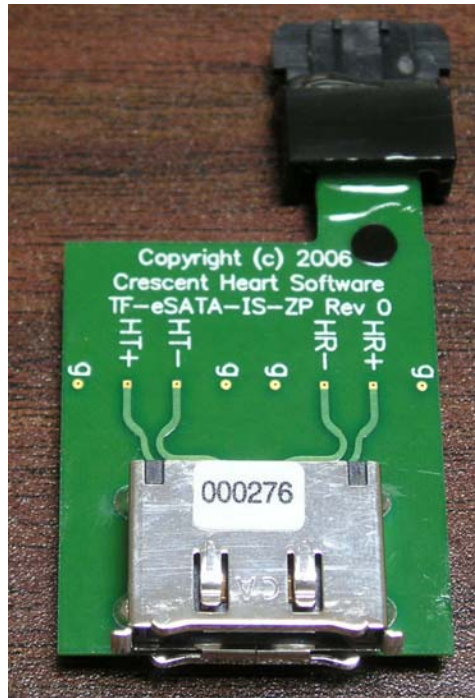
### Contact Crescent Heart Software

- Internet: [www.c-h-s.com](http://www.c-h-s.com); E-mail: [sales@c-h-s.com](mailto:sales@c-h-s.com); Voice: (+1)503-232-2232; Facsimile: (+1)503-232-2255
- Crescent Heart Software, a Tektronix® Embedded Systems Tools Partner and a member of the Tektronix® Logic Analyzer Third Party Developer team, is headquartered in Portland, Oregon USA. Crescent Heart Software has been a member of the Serial ATA 1.0 and Serial ATA II Working Groups.
- Information presented herein is subject to change without notice (datasheet Revision T, November 2010)

• **HARDWARE & SOFTWARE PRODUCTS FOR USE WITH TEKTRONIX® LOGIC ANALYZERS & OSCILLOSCOPES** •

# TF-eSATA-IS-ZP

## External Serial ATA Compliance Test Fixture



### Features

- TF-eSATA-IS-ZP facilitates **in-system** monitoring of External Serial ATA data signals
- 1.5 Gb/s, 3 Gb/s and 6 Gb/s bus signaling rates supported
- Male and female External Serial ATA connectors utilized
- Test fixture plugs in to the host or device External Serial ATA connector, and connects to the device or host via an External Serial ATA cable (not provided)
- Mechanical reinforcement of the female External Serial ATA connector for maximum durability
- In-system access provided to all four Serial ATA differential signals
- Accommodates differential probe connections through 0.15 inch-spaced (3,8 mm-spaced) PCB vias
- Accommodates non-differential probe connections to ground through 0.15 inch-spaced (3,8 mm-spaced) PCB vias
- Unique three-layer differential 100 Ohm tight-tolerance controlled-impedance PCB design
- Facilitates monitoring External Serial ATA data signals in-system when used with appropriate high-performance digital oscilloscopes and differential probes
- **Note:** Refer to [www.c-h-s.com/tf-sata.shtml](http://www.c-h-s.com/tf-sata.shtml) regarding a notice concerning possible HT/HR signal pair swapping and silkscreen mislabeling

### Contact Crescent Heart Software

- Internet: [www.c-h-s.com](http://www.c-h-s.com); E-mail: [sales@c-h-s.com](mailto:sales@c-h-s.com); Voice: (+1)503-232-2232; Facsimile: (+1)503-232-2255
- Crescent Heart Software, a Tektronix® Embedded Systems Tools Partner and a member of the Tektronix® Logic Analyzer Third Party Developer team, is headquartered in Portland, Oregon USA. Crescent Heart Software has been a member of the Serial ATA 1.0 and Serial ATA II Working Groups.
- Information presented herein is subject to change without notice (datasheet Revision T, November 2010)

• **HARDWARE & SOFTWARE PRODUCTS FOR USE WITH TEKTRONIX® LOGIC ANALYZERS & OSCILLOSCOPES** •