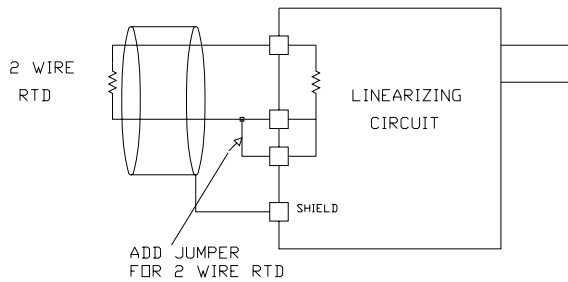
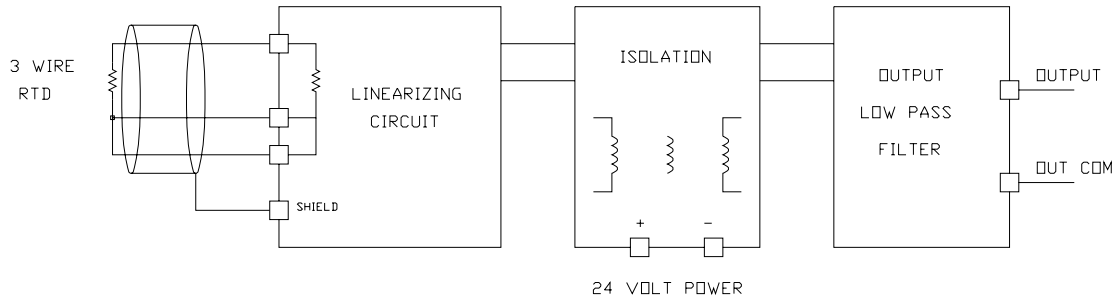
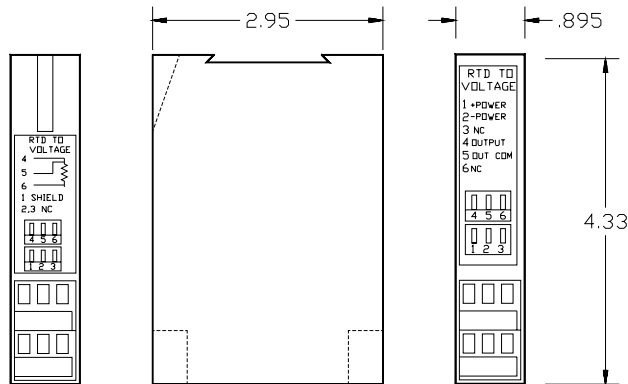


# Models 8940, 8941, 8942 Isolated RTD to Voltage

## MODEL 8940, 8941, 8942 RTD CONNECTIONS



## MODEL 89XX CASE DIMENSIONS



Model	8940-450-DC	8941-450-DC	8942-450-DC
<b>Input</b>	100 Ohm	500 Ohm Platinum RTD $\alpha = 0.00385$ , 2 or 3 Wire	1000 Ohm
<b>Temperature Range</b>	-50°C to +450°C	-50°C to +450°C	-50°C to +450°C
<b>Output</b>	0 to +10 Volts 5K Ohm Minimum	0 to +10 Volts 5K Ohm Minimum	0 to +10 Volts 5K Ohm Minimum
<b>Temperature Coefficient</b>			
Zero	0.02°C / °C Typical	0.02°C / °C Typical	0.02°C / °C Typical
Reading	0.015°C / °C Typical	0.015°C / °C Typical	0.015°C / °C Typical
<b>Linearization</b>		±0.7°C Maximum (Does not include RTD error)	
<b>3 Wire Compensation</b>		0.01°C / Ohm - 3 Wires equal R, up to 10 Ohms, Typical	
<b>Response Time</b>	1.5 sec	1.5 sec	1.5 sec
<b>Isolation - 3 Way</b>	700 Volts DC	700 Volts DC	700 Volts DC
<b>Power Requirements</b>		22 to 26 Volts DC, Unregulated 15 mA	
<b>Environment</b>			
Operating		0°C to +55°C	
Storage		-40°C to +80°C	
<b>Physical</b>		Plastic Case (UL-94V-1) with Built in DIN Rail Mounting Foot	
Size		4.33"H x 0.895"W x 2.95"L (110 x 22.5 x 75 mm)	
Weight		5 oz. (142 grams)	
<b>Agency Approvals</b>		UL 508, C22.2 No 14-M91, UL 1604, C22.2 No 213-M1987	