



Fovea Firmware Update Guide



Version 2.2

Calibre UK Ltd
Cornwall House,
Cornwall Terrace
Bradford, West Yorkshire
BD8 7JS, England
Telephone +44 (0)1274 394125
Fax + 44 (0)1274 730960
Email techsupport@calibreuk.com
Web-site www.calibreuk.com

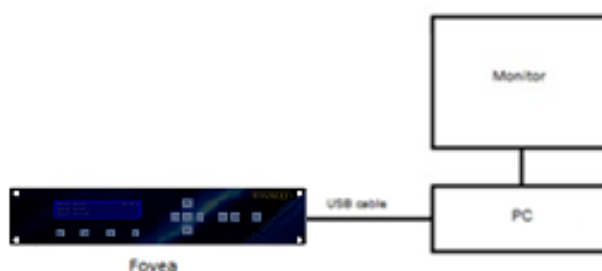
Introduction

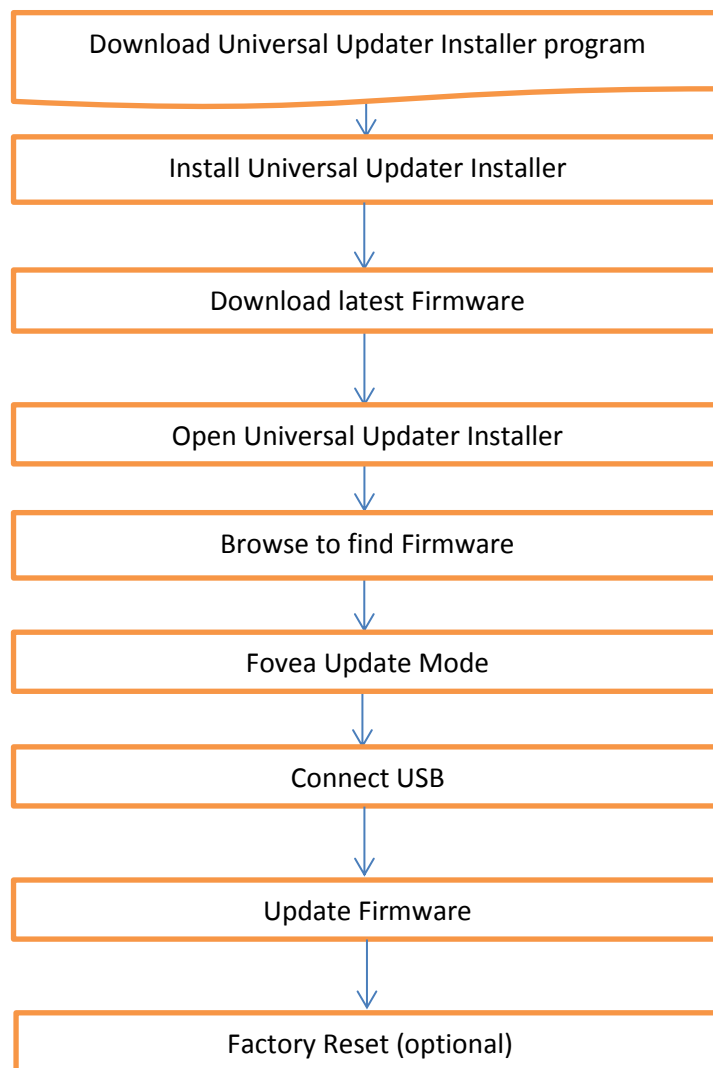
This guide is a non-technical introduction to updating the firmware in Fovea

The guide describes how to download the Universal Updater Installer program and the latest firmware version, then to put Fovea into update mode. The process of using the universal updater installer program to install the new firmware and then perform an optional factory reset.

It is important to follow this step by step guide, do not miss out operations, keep to the order of actions in this guide or the whole process will not work.

This guide does not replace the product user manual, it offers a non-technical guide to the process.





Download the Universal Updater tool and Latest firmware

Start by downloading the 'Universal Updater Installer' program from the CalibreUK Web site, find it at this link http://www.calibreuk.com/product_pages/broadcast/downloads.php

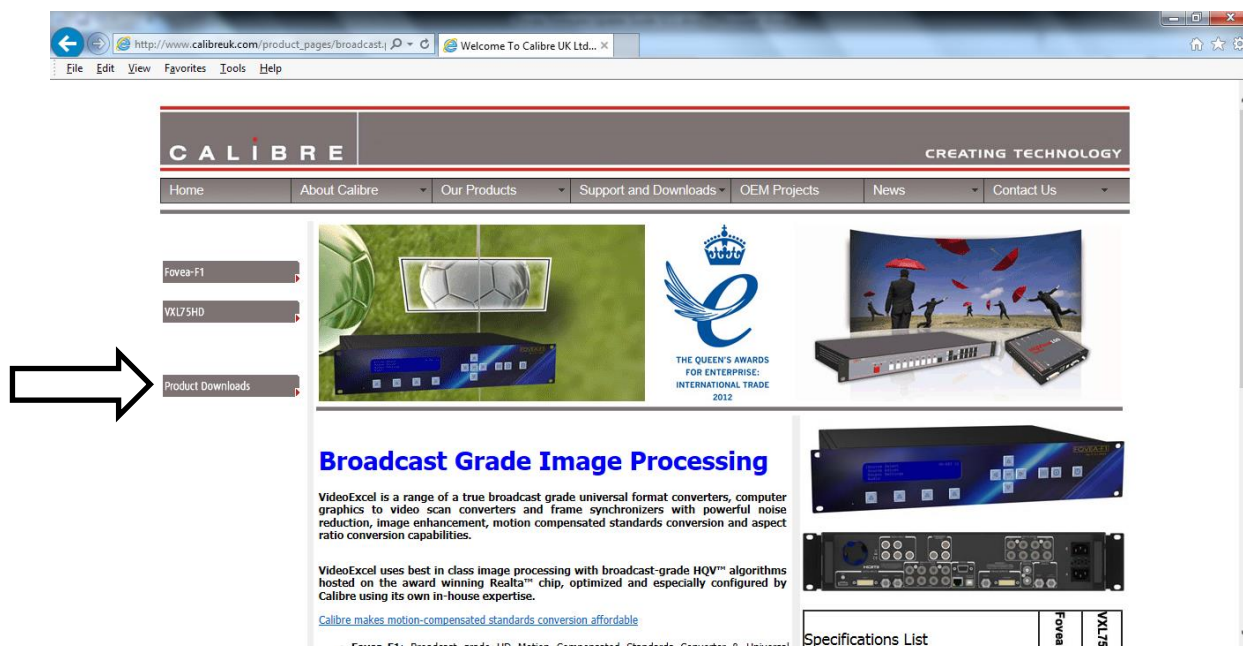
Or

Find it by going to our web site www.calibreuk.com

Select 'Broadcast Format Converters' as indicated by the arrow in the picture below

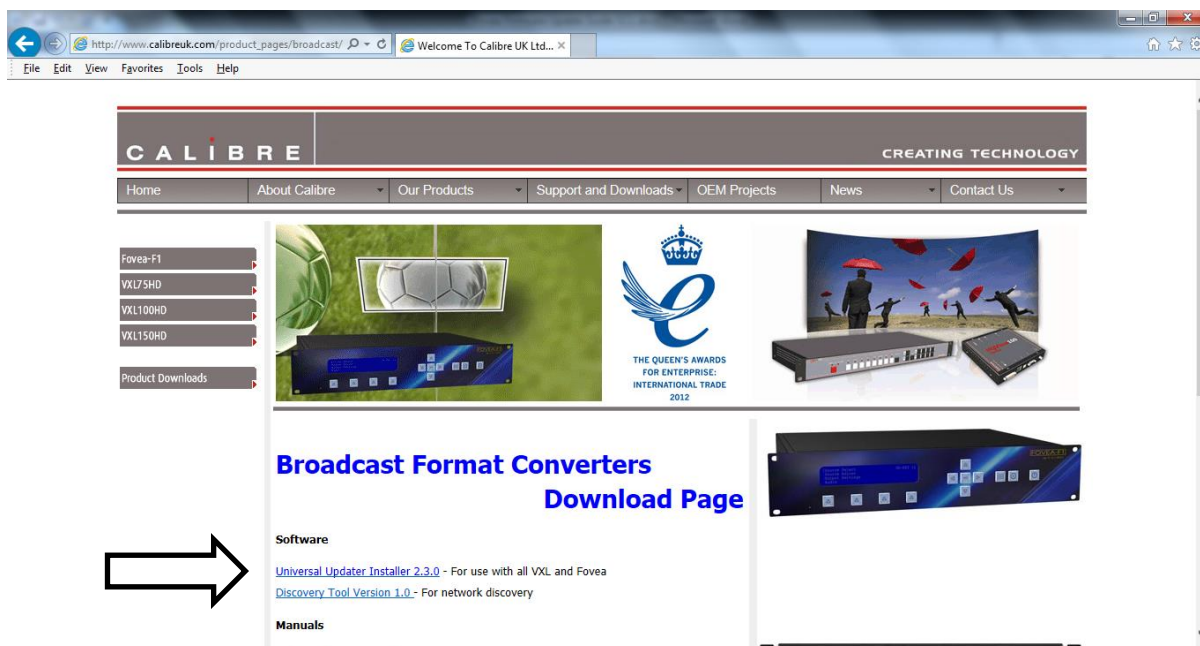


Then select 'Product Downloads' as indicated by the arrow in the picture below

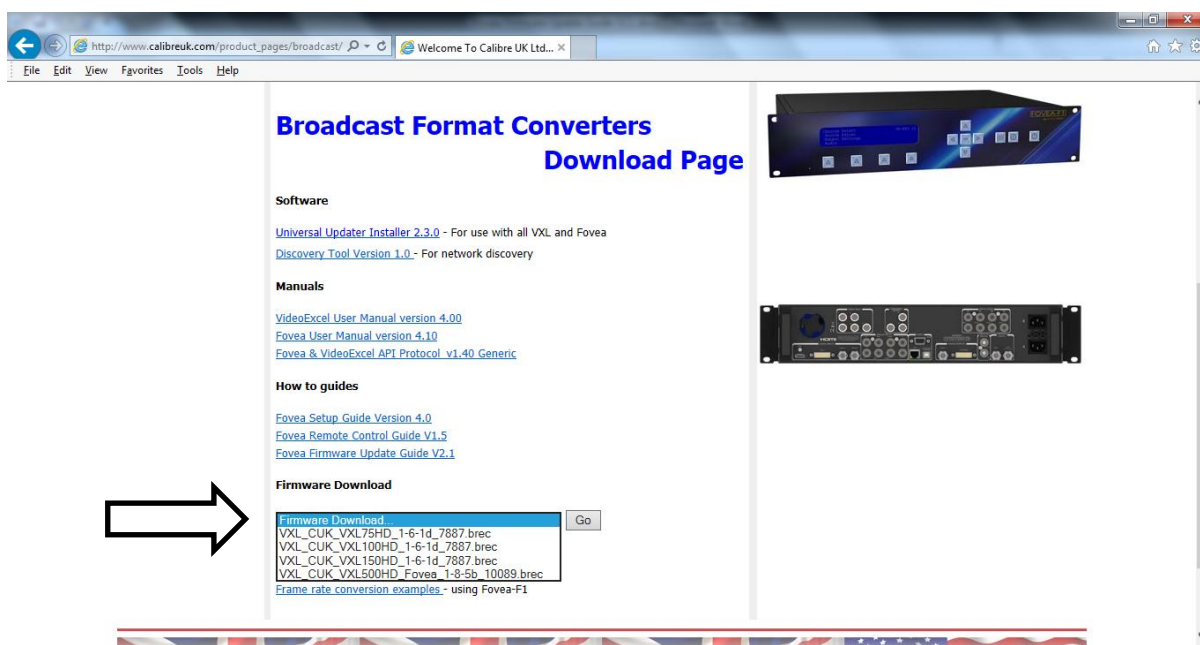


Next download and 'RUN' the Universal Updater Installer indicated by the arrow in the picture below.

This program needs to be installed on your computer.



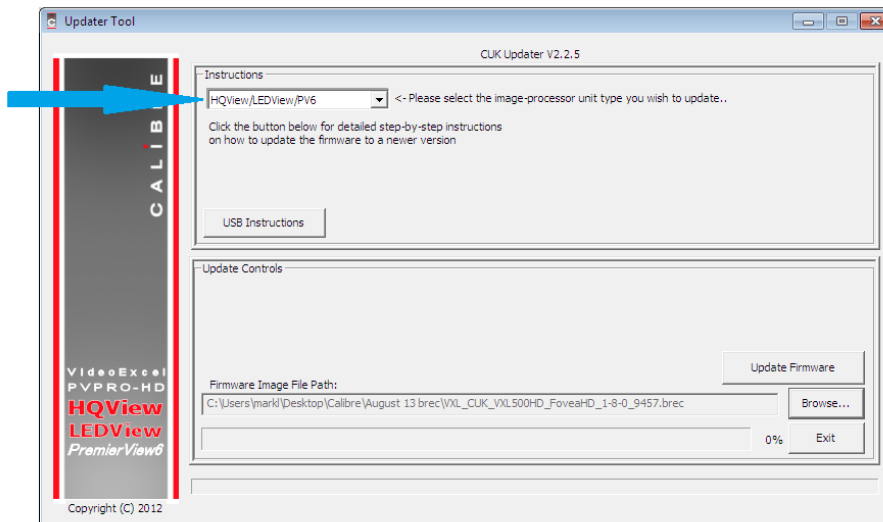
Next download the firmware for your processor. Go to the drop down box indicated by the arrow in the picture below and select the correct firmware. Click on the 'Go' button and store the file on your computer where you will know where to find it.



Update your Fovea to the latest firmware

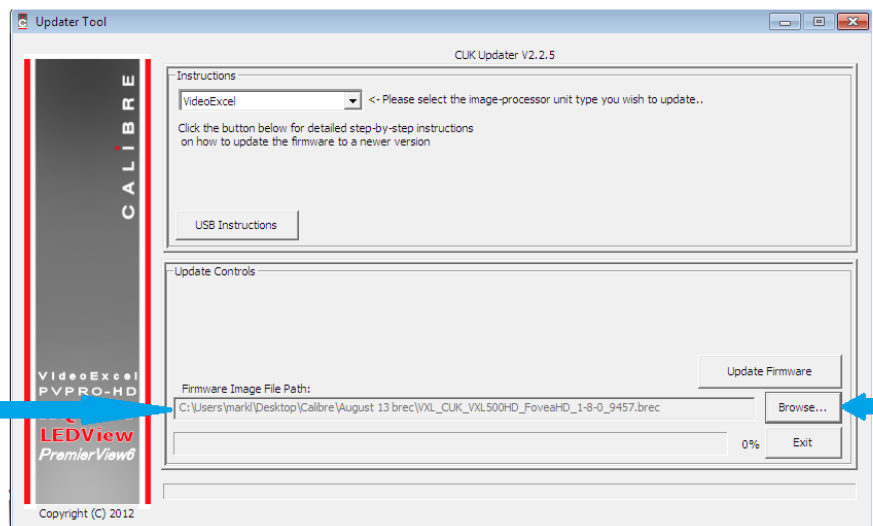
Next open the 'Universal Updater Installer' program, this will normally be found in your start menu>all programs> in a folder called Calibre Tools.

In the top left use the drop down box to select 'Fovea' as indicated by the arrow in the picture below



Next Use the 'Browse' button marked by the small arrow in the picture below to enter the location of where you stored the firmware file.

When you have done this the address of the firmware file should be in the window marked with the long arrow in the picture below



Start your Fovea in Update Mode

Now start the Fovea in its 'update mode'.

There are two methods of achieving this.

1. Press and hold the right hand arrow key whilst connecting the power



When the power has been applied release the right hand arrow key.
The Fovea will now display the 'Ready for update' message

Ready for update.

2. Alternatively: The reset key which is accessible through a small bore in the lower left corner of the front panel as indicated by the red arrow in the diagram below can be used instead of cycling the power.



Press and hold the Right arrow key and then press the recessed reset key. The unit indicates it is Ready for update with a message in the front window.

Connect the USB lead

It is important that this step is done after the processor has been put into Update Mode.

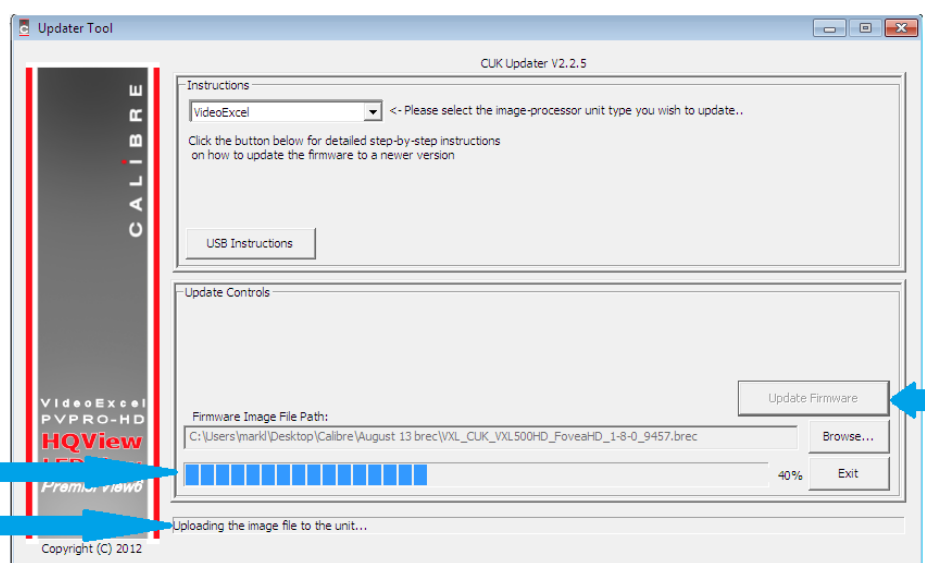
Next connect a USB lead between your computer and the USB socket on the rear of the Fovea as indicated in the picture below



Update the Firmware

Next, in the Universal Updater Installer program on your computer use the 'Update Firmware' button indicated by the short arrow in the picture below.

Progress will be shown by the two boxes indicated by the two long arrows in the picture below

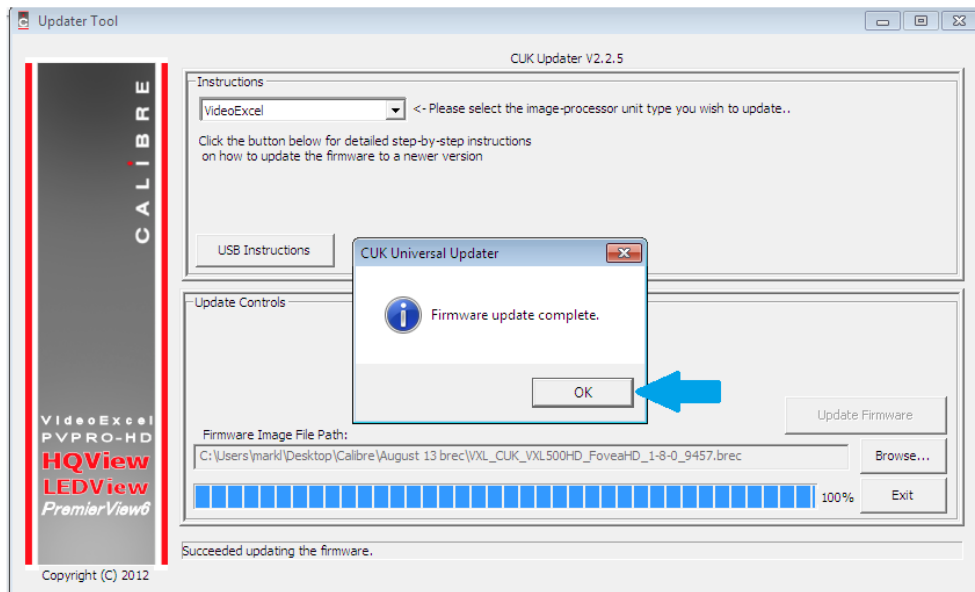


Progress will also be shown by a series of messages in the Fovea window

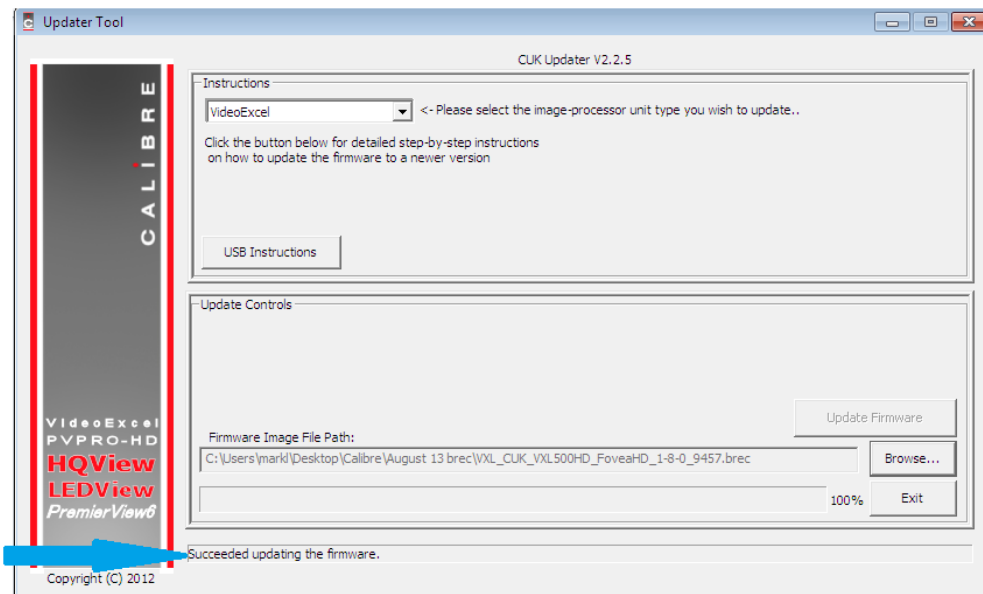
```
Ready for update
Receiving download
```

NOTE: IT IS IMPORTANT THAT YOU DO NOT INTERRUPT THE PROCESS

When the update process is complete a window will appear stating 'Firmware Update Complete'
Press the OK button as indicated by the arrow in the picture below



The bottom line of the Universal Updater Installer will then show confirmation that the firmware has been successfully updated as indicated in the picture below



Final steps

It is important to remove the USB lead before taking the next step

Cycle the power by removing the power from the Fovea and then re-apply the power

Or

Press the recessed Reset key

The Fovea window will give a series of messages as it re-boots

Be patient, this takes a little time, **do not interrupt this process**

Note:

i) The update process can take several minutes.

ii) If the LCD window indicates "Update failed" This means a second reboot is required, Fovea is not broken.

When the LCD panel shows the input switch allocations the re-boot is complete.

Optional:- perform a factory reset

This is found in Menu>Miscellaneous>Factory Reset

Confirm by changing No to Yes and press Enter

The Fovea will re-boot

If a factory reset is mandatory for this update to work it will happen automatically at the next reboot.

END

E&OE