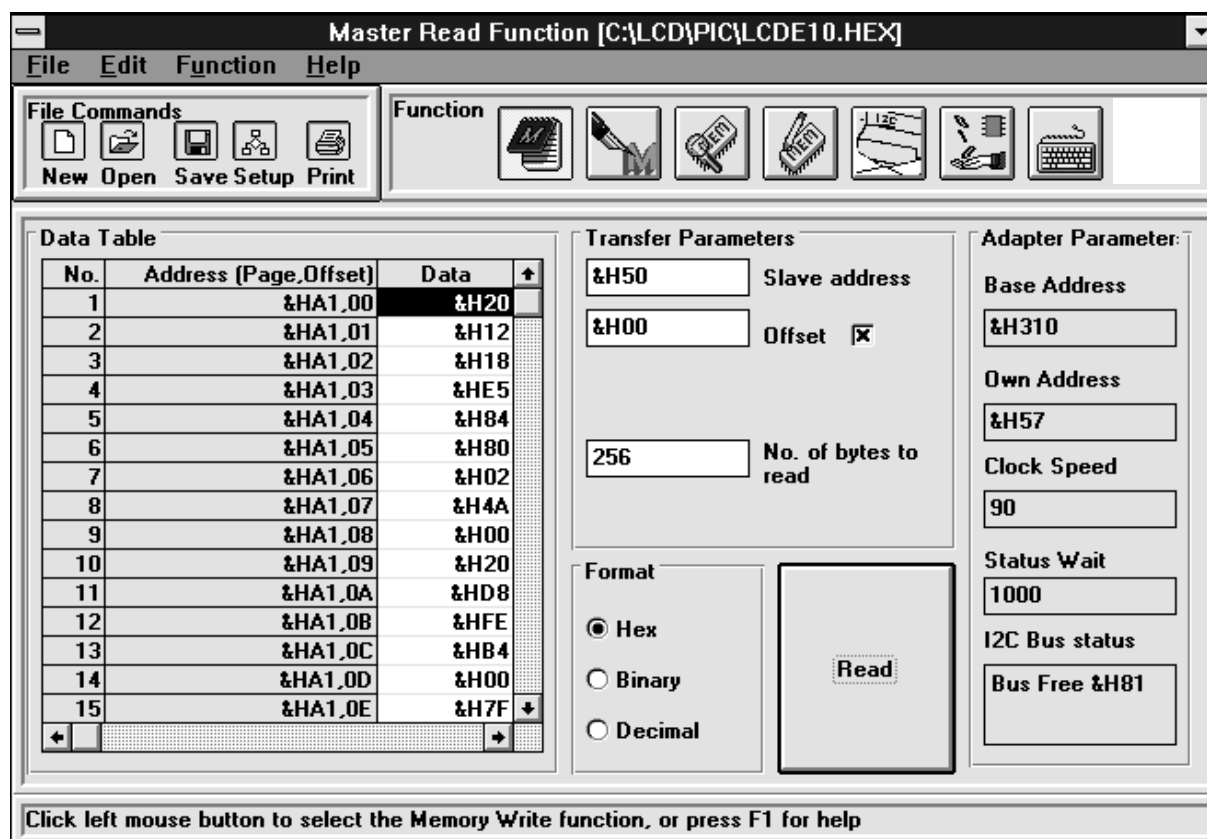


WINI²C/ICA

I²C Comms for Windows



Easy I²C adapter configuration

On screen display of all configuration parameters

7 I²C functions including master & slave protocols

3 selected data formats (Hexadecimal, Decimal and Binary)

Text based data files with transfer parameters and optional user comments

Full on line help and a comprehensive user manual

The following I²C functions are supported:

1. Master (the adapter located in the PC) reading from a Slave (located elsewhere)
2. Master (the adapter located in the PC) writing to Slave (located elsewhere)
3. Memory read - the adapter located in the PC is a master and reads the entire contents of the I²C memory.
4. Memory write - the adapter located in the PC is a master and writes data to the complete I²C memory.
5. Slave (the adapter located in the PC) being read by a Master (located elsewhere)
6. Slave (the adapter located in the PC) being written to by a Master (located elsewhere)
7. Teletype - the adapter located in the PC is a master and writes each byte of data to the slave as it is typed in.

I²C Comms for Windows

The application provides a windows driven configuration of the ICA90 or ICA93 including the PC I/O base address (in the range 310 to 31E hexadecimal), the setting up of the master SCL clock speed (1.5 / 11 / 45 / 90 KHz) and the own address of the adapter within your system.

The Master Read / Write, Slave Sender / Receiver and Teletype functions support transfers which require the first word after the address to be an offset pointer as well as those that do not.

The memory read / write functions access the entire device with a minimum of I²C parameters. If the device is larger than 256 bytes the application will automatically access the next page.

The teletype function allows you to send one byte of data to a slave, then inspect the effect of that data on your system before sending the next byte.

A progress window is displayed whenever an I²C transfer is executed, except for Teletype and Monitor functions. The part of the I²C transfer cycle currently being performed is indicated by bold text. The Operation column within the progress provides a simple description of the part of the I²C transfer cycle currently being performed, including the state of the acknowledge for the transfer. The Data column details the I²C address transmitted / received (NOTE slave functions also display the Offset address received). The I²C Status column details the status of the bus at the various parts of the I²C transfer cycle.

Data can be displayed in hexadecimal, decimal and binary formats which can be loaded from and saved to simple text files. These files include the transfer parameters to enable portability of data between different PCs.

All data files can be edited manually via standard windows text editors. Data can be edited directly by simply clicking on the byte to be changed and then entering the new data.

The data can have comments added to improve readability. These comments can either be entered directly or via a text editor at a later date. The contents of the data table can be printed via the Windows default printer.

The use of proven I²C software can significantly reduce your I²C hardware and software development time by breaking the design loop.

This software can also be used in a production test environment enabling you to stimulate or monitor your system, hence reducing the need for expensive special to type test equipment.

Calibre UK Ltd undertakes ICA90 & ICA93 software support contracts to customers' own requirements. Calibre also offers a large range of lcd monitors and interfaces, colour monitors, computer video distribution amplifiers, scan converters and many other display related products. Please call for further information.

WINI2C/ICA is for use with Calibre's ICA90 and ICA93LV internal ISA-bus I2C Adapters only. Alternative software is also available for use with Calibre's PICA90 and PICA93LV external I2C Adapters and Calibre's PCI90 and PCI93LV PCI-based Adapters.

Purchase of WINI2C/ICA conveys a single user licence for installation on one computer or use with one I2C Adapter only. One software licence is required for each concurrent installation.

Specification	Fully I ² C compatible Developed directly for the ICA90 & ICA93 Easy to use Windows™ application with full on line help
---------------	------------------------------------------------------------------------------------------------------------------------------------------

For further information on the WINI2C/ICA application or any other Calibre product contact

UK, Europe and World-Wide

Calibre UK Limited
Cornwall House
Cornwall Terrace
Bradford
BD8 7JS
England

e-mail: i2csales@calibreuk.com

Telephone: + 44 (0)1274 394125
Facsimile: + 44 (0)1274 730960

web: www.calibreuk.com

USA and Canada

Saelig Co. Inc

e-mail: info@saelig.com

1160-D2 Pittsford-Victor Rd.
Pittsford
NY 14534
USA

Telephone: (1) 585 385 1750
Facsimile: (1) 585 385 1768

Call toll-free in the USA on 1-888-7SAELIG

Or buy on-line at www.saelig.com (USA/Canada deliveries only)

