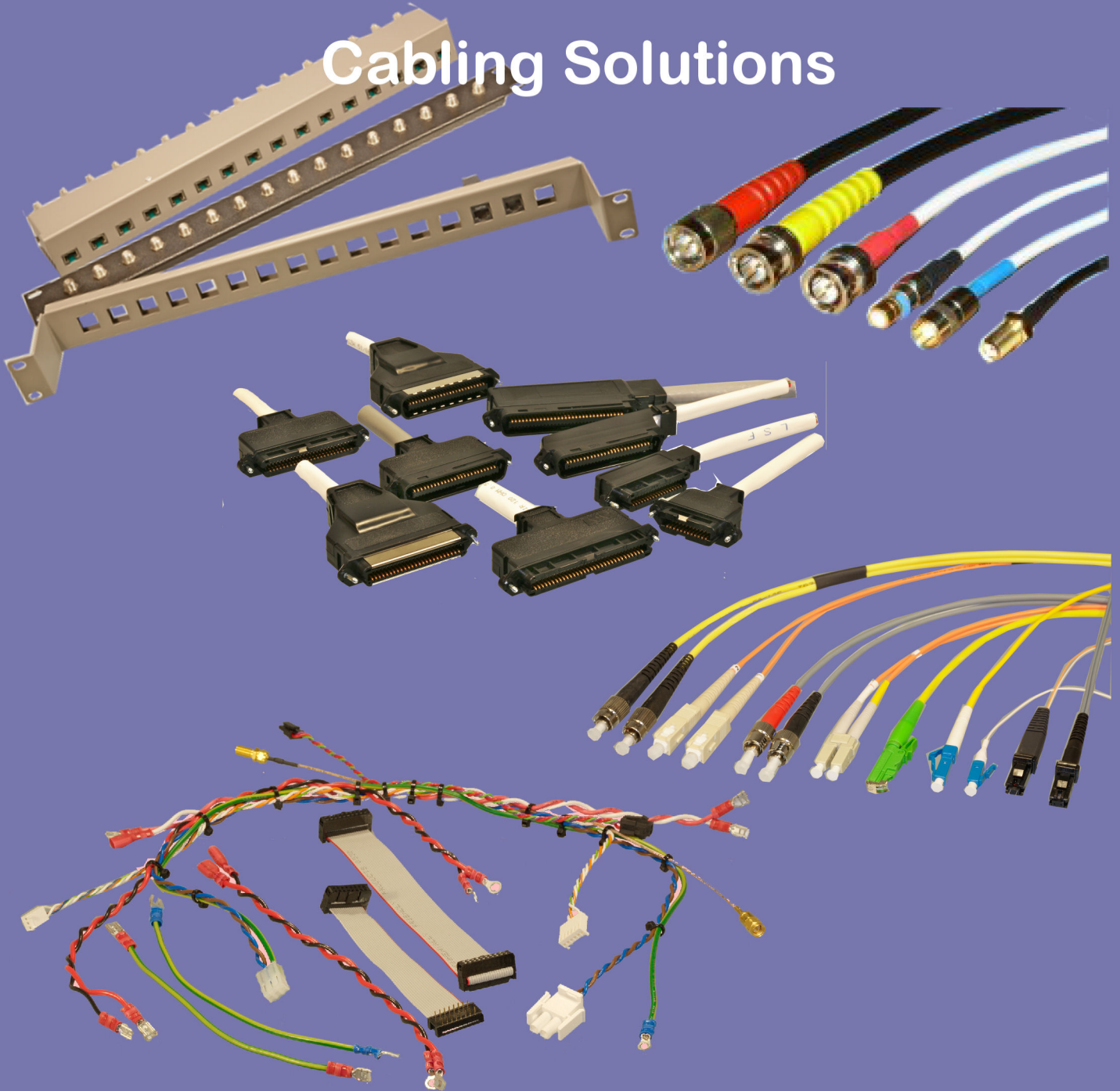




System Connections (Cambridge)

a division of Cambridge Electronic Industries Ltd

Cabling Solutions



Denny Industrial Centre, Waterbeach, Cambridge CB25 9QR England

Tel: +44 (0)1223 863377 Fax: +44 (0)1223 863625

email: sales@systemconnections.co.uk

web: www.systemconnections.co.uk



Telco
AMP Champ, RJ21, Telco, BT226 Cable Assemblies
 24,36,50,64 ways
 90°, 110°, 180° covers
 Single (open) end, double end types
 Shielded, unshielded connectors/cable
 Voice (CW1308), Cat3, Cat5 cable
 PVC, LSOH jacket
 Various colours—white, grey, orange, violet etc.
 Labelling, sleeving
 Standard/Custom lengths



RF Coaxial
Cable types-RG58, 59, 62, 174, 178, 179, 316 etc.
BT cable types-BT3002, 2002, 2003, RA7000, Saturn etc.
Broadband/cable TV types-CT100, CT125, CT165
Connector types-BNC, TNC, F Type, N Type, SMA, SMB, MCX, MMCX etc.
BT connector types-Type 43, HDC43, UHDC43 etc.
Single, twin (shotgun), multicore & composite looms

 Bulk cable & connectors



Datacom
Custom made assemblies
 D Sub. V.35(MRAC), X.21, RS232, RS422, circular, rectangular, SCSI, XLR etc.
 Shielded, unshielded
 Multicore, twisted pair, extended distance composite PVC, LSOH outer jacket
 Adaptors

Over moulded assemblies
 Moulded assemblies
 Waterproof assemblies



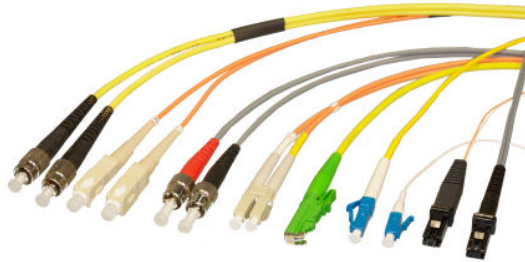
Patch Cables - Copper
 RJ11, RJ12, RJ45, 110 connectors
 Flat, voice, Cat5e Cat6—stranded or solid conductor UTP, FTP, STP, SFTP
 PVC, LSOH outer jacket
 All standard colours
 Curly cords
 Booted, unbooted, moulded



Telephone Cables
 RJ10-4P4C, RJ11, 6P6C, RJ12-6P4C, RJ45 & 10 way RJ48
 BT Plugs 430, 431, 630, 631
 Straight line cordage various colours
 Curly Cords
 RJ & BT Jack assemblies for conversion/extensions



MDR
 Features:
 Straight or angled hoods
 Rugged MDR ribbon contact style
 Full EMI shielding
 Quick release latching mechanism
 Standard beige colour—other colours available
 Plastic cover over shielding can or die cast cover
 Paired shielded cable



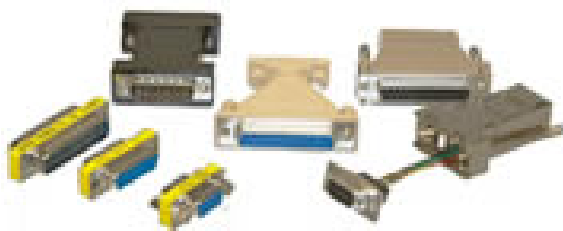
Fibre

Patch cable & pig tails
 Single mode, multimode
 SC, SC/APC, FC, FC/APC, ST, FDDI, MTRJ, LC, ESCON, FSMA, Mini BNC
 Simplex, Duplex
 Components—connectors, couplers
 Patch Panels
 Labelling, coloured boots etc.
 Ruggedised jacket
 Bend limiting tube
 All cables built to order, please specify cable typ e.g. 9/125, 50/125, 62.5/125, OM3 etc.
Connectors:
 ST; SC; FC & LC available in both multi-mode and single-mode styles for Simplex & Duplex applications.
Cable:
 Tight buffered & loose tube cables available in many sizes including 9/125, 50/125, 62.5/125, OM3 etc.
Assemblies:
 100% tested range of fibre pigtailed, Simplex & Duplex patch cords available using 9/125; 50/125; 62.5/125 or OM3 fibre.



SDL

This connection system provides EMI/RFI and ESD protection for: Computers, peripherals, video games, point-of-sale equipment, process control systems, MIB and access bus applications.
 Shielded flat, round & coiled cables for 24/26 AWG conductors; with or without boots, 4,6,8 & 16 way and 5 keying options for the plug. Single or double end or terminated to any other connection as required.



Adapters

RJ10 handset splitters & adapters, RJ11, RJ12 & RJ45 splitters, dongles & extension cable—RJ45 plug to RJ45 jack. This latter version can be over moulded for extra security.
 Configured modular adapters—RJ45 to D subminiature. Other styles include interseries adapters for RF (coax) applications, BNC/Euro/F type/FME/UHF & mini UHF/N type/RCA phono/SMA/TNC.



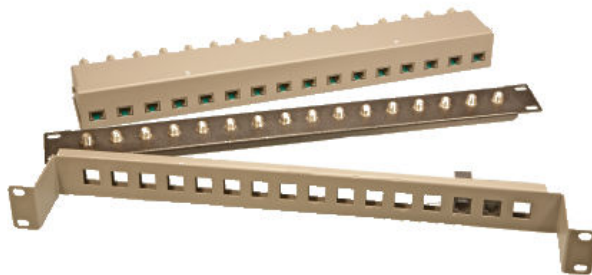
Harnesses

Full custom service. Specialised composite harnesses. Molex, KK, Mini-fit, Micro-fit, Mate 'n' Lock etc. JST, Harwin, AMP, Tyco.
 All cable assemblies built to order.



Circular

Typical applications:
Audio/visual, medical, automotive, broadcasting, communications, military etc.
Connector types include, but are not limited to:
XLR, Phono (RCA) plugs & jacks, DIN, Mini DIN, Buccaneer, Trim Trio, CPC, Trident



Rack & Cabinet Mounted Panels

Standard RJ45, BNC, F Type, D Sub, XLR Patch Panels. RJ45 Voice, 10baseT, Cat5, 100baseT Punchdown or Telco (RJ21) connection. Custom panels designed and manufactured including metalwork and painting to customer requirements.



Power Data

Power cords to cover most applications including: UK 13A, Schuko, USA, Australian, all European and International standard plugs injection moulded to IEC320, figure of 8, CS, C19 (16Amp) sockets. Medical grades also available.
Comprehensive range of power & data management systems: 19" & 23" Rack mounted power management, vertical & horizontal mount. IEC320 panels 10-20 outlets 1u/2u or customised product.



Moulded Cables

Applications:
Medical
Telecoms
Networking
Instrumentation
Industrial Process Control
Audio / Visual



¼ DIN, ½ DIN assemblies provide 14/21 pins in single or double backshell sizes.
Type B & type C assemblies
32, 64 & 96 way connectors cabled to customer requirements, round and flat cable ribbon versions together with screened/unscreened hoods/covers.
Mixed Layout DIN provide a combination of signal, RF/coaxial, high voltage & power contacts within the same shell.