



**Cambridge Connectors™**  
A Division of Cambridge Electronic Industries Ltd.

## **New Product Press Release - for immediate release**

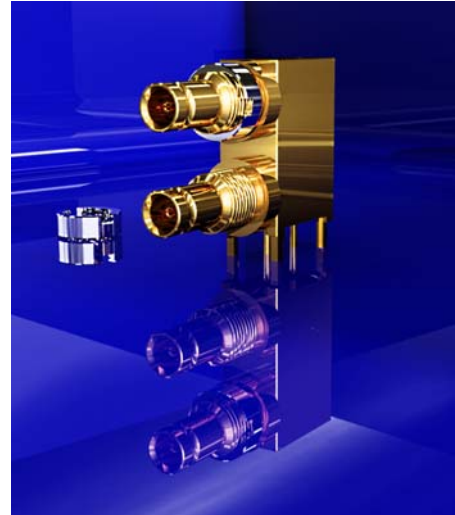
### **Dual Port 1.0/2.3 connector from Cambridge Connectors saves space in High Definition, High Speed Video Networks.**

Meeting SMPTE 424 M standards, this new dual-port small format 1.0/2.3 connector from Cambridge Connectors is designed for use in high definition, high speed video applications. With its 8mm pitch and innovative “piggy-back” design 4 times the board density can be achieved compared to traditional RF connectors such as BNC types.

In addition to SDI, HDI and 3G-SDI digital broadcast use, this dual port 1.0/2.3 connector is ideal for high speed machine vision applications such as CoaxPress®. Its secure latching mechanism combines high connection integrity with a simple push/pull operation, making it is particularly suited to industrial process control / data acquisition environments - especially where high wiring densities are required.

With a nominal impedance of 75 ohms, typical reflection factor performance (VSWR) is between 1.17 (DC - 1.5GHZ) and 1.23 (1.5 – 3.0GHZ). With a gold plating finish as standard the connector is RoHS compliant and is fully compatible with standard 1.0/2.3 connectors.

[More information >>](#)



**Cambridge Connectors™**  
A division of Cambridge Electronic Industries Ltd.  
Denny Industrial Centre, Waterbeach, Cambridge, England, CB25 9QR  
[sales@cambridgeconnectors.com](mailto:sales@cambridgeconnectors.com)  
[www.cambridgeconnectors.com](http://www.cambridgeconnectors.com)  
Tel: +44 (0)1223 860041 Fax: +44 (0)1223 863625

