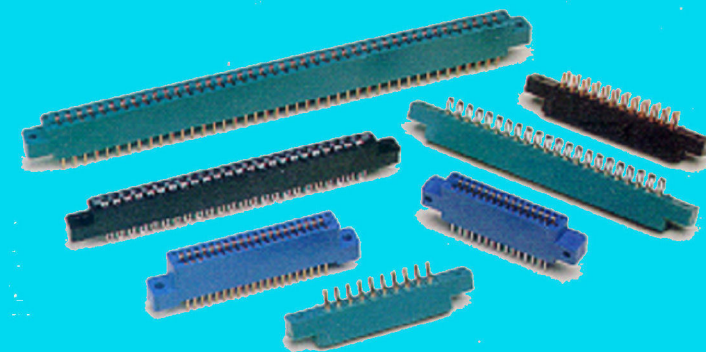




Cambridge Connectors
a division of Cambridge Electronic Industries Ltd

Edge Card Connectors



Denny Industrial Centre, Waterbeach, Cambridge CB25 9QR England
Tel: +44 (0)1223 860041 Fax: +44 (0)1223 863625
email: sales@cambridgeconnectors.com
net: www.cambridgeconnectors.com

Contents

.100 Contact Spacing

.125 Contact Spacing

.156 Contact Spacing

Ordering Code

.100" series (2.54mm)

- ◆ dip solder
- ◆ pierced tail

general information

Materials & Finishes

- **Insulators:** Glass filled polyester (G.E. Valox 420-SEO or equivalent). Colour Blue. UL approved. other insulator materials and colours are available on request.
- **Contacts:** (For Termination Styles P & S only) Bifurcated full bellows design, and manufactured from phosphor bronze material. Beryllium copper and pfnodal materials are available for high temperature applications.
- **Contacts:** (For other Termination Styles) Bifurcated semi bellows design, and manufactured from phosphor bronze or copper alloy 725 material.

Plating:

- 1) All over gold is plated to MIL-G-45204 Type II over .000050 (1.27µm) minimum Nickel.
- 2) Selective gold stripe is plated on the mating surface only, over .000030 (.76µm) minimum Nickel. The remainder of the contact is unplated.
- 3) other platings are available on request.

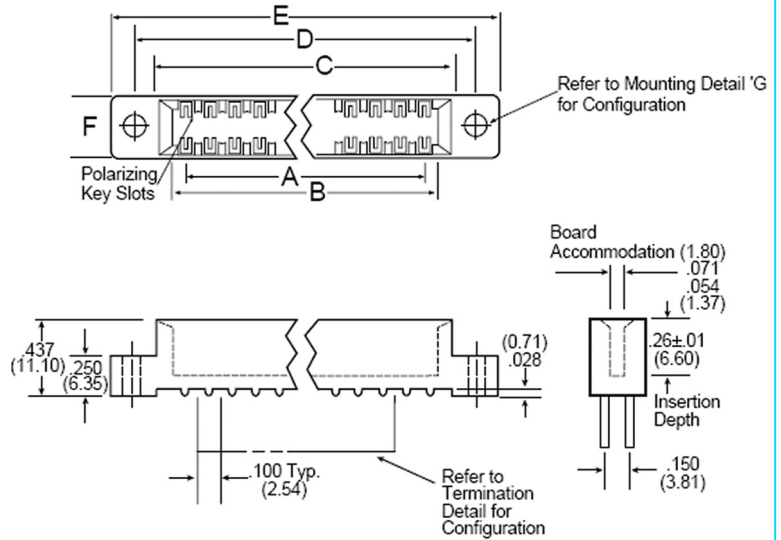
Hardware: Nickel plated brass.

Polarising Keys: Nylon. Colour: white

Operating Characteristics:

- Insertion/withdrawal forces to MIL-C-21097C
- Insertion: 2-16oz per opposing pair of contacts when using .062 (1.57) steel test blade
- Withdrawal: 1oz min. when using .054 (1.37) steel test blade.
- Temperature Range: 140°C continuous; 215°C short duration
- Operating Voltage: 600 VDC (sea level)
- Current: 3 amps
- Voltage Drop: will not exceed 30 mV at rated current

Dimensions



Contact Identification

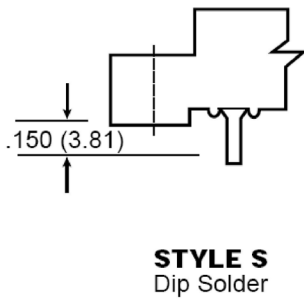
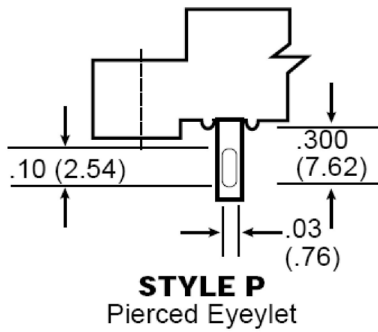
- B 1, 2, 3 60B
- A 1, 2, 3 60A



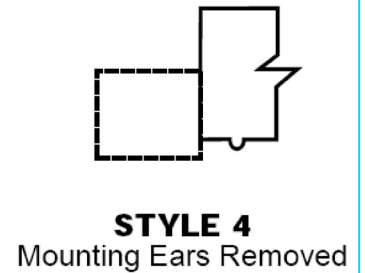
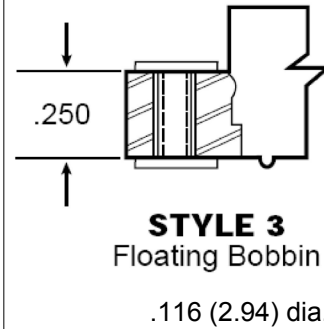
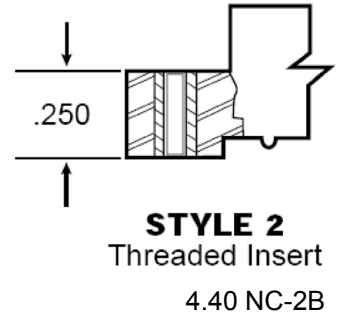
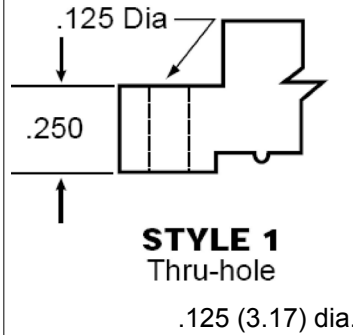
Polarising Key
order separately
part number PK03

Refer to dimensions in Table A

termination styles



mounting styles



NOTE: Additional mounting styles and hole sizes available upon request

Ordering Code

CO - 2 100 - 26 - D P - 1 - (MOD)

Contact Plating:

CO = .000010 in. (.25 microns) Au minimum all over
CS= .000010-.000015 in. (.25-.37 microns) Au on the mating surface only, remainder unplated Copper Alloy 725

Insulator Material:

See general information

Contact Spacing: .100 in. (2.54)

No. of contacts

Dual Read-out:

Contact Termination:

P = Pierced Tail
S = Dip Solder

Mounting

Special Modifications

.100" series (2.54mm)

- ◆ wire wrap
- ◆ right angled
- ◆ extender card

general information

Materials & Finishes

Insulators: Glass filled polyester (G.E. Valox 420-SEO or equivalent). Colour UL approved. other colours and materials available on request.

Contacts: Bifurcated semi bellows design manufactured from phosphor bronze or Copper Alloy 725

• Plating:

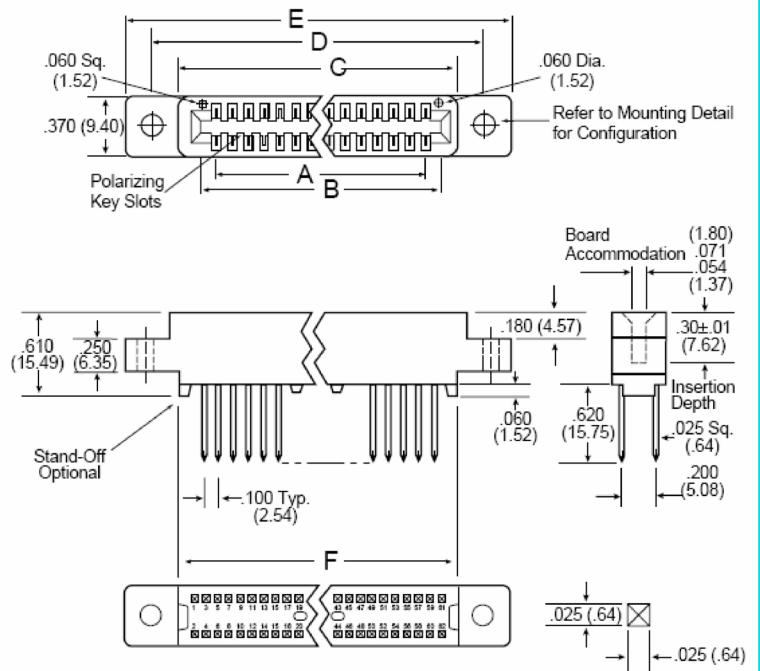
- 1) All over gold is plated to MIL-G-45204
Type II over .000050 (1.27µm) minimum Nickel.
- 2) Selective gold stripe is plated on the mating surface only, over .000030 (.76µm) minimum Nickel. Tail unplated.
- 3) other platings are available on request.

• Inserts: Nickel plated brass.

Polarising Key: Nylon. Colour: white

Operating Characteristics:

- Insertion/withdrawal forces to MIL-C-21097C
Insertion: 2-10oz per opposing pair of contacts when using .062 (1.57) steel test blade
Withdrawal: 1oz min. when using .054 (1.37) steel test blade.
- **Temperature Range:**
140°C continuous; 215°C short duration
- Operating Voltage: 600 VDC (sea level)
- Current: 3 amps
- Voltage Drop: will not exceed 30 mV at rated current



Contact identification

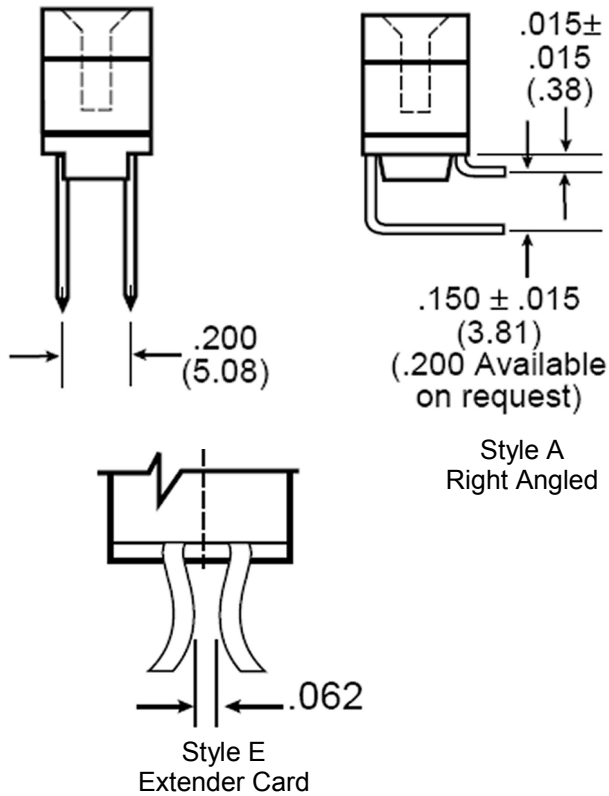
- 1,3,5.....139
- 2,4,6.....140



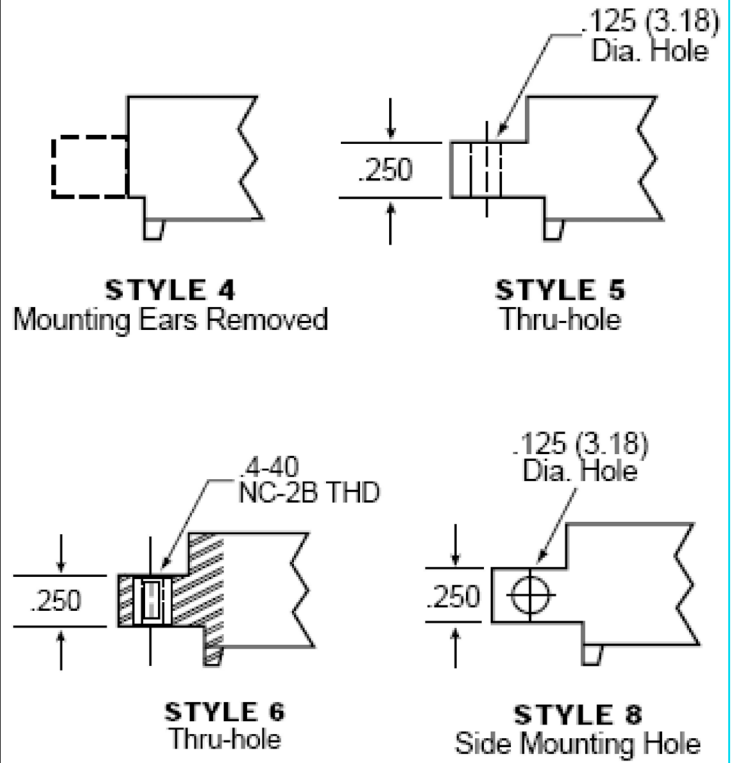
Polarising key
order separately
part number PK04

Refer to dimensions in Table B

termination styles



mounting styles



Ordering Code

CO - 2 100 - 22 - D W - 5 - (MOD)

Contact Plating:
 CO = .000010 in. (.25 microns) Au minimum all over
 CK = .000010-.000015 in. (.25-.37 microns) Au on the mating surface only, remainder plated tin lead.

Insulator Material:
 See general information

Contact Spacing: .100 in. (2.54)

No. of contact pairs

Dual Read-out:

Contact Termination:
 W = Wire Wrap
 A = Right Angled
 E = Extender Card

Mounting Style:

Special Modifications

.100" series (2.54mm)

◆ **flow solder**

general information

Materials & Finishes

Insulators: Glass filled polyester (G.E. Valox 420-SEO or equivalent). Colour UL approved. other colours and materials available on request.

Contacts: Bifurcated semi bellows design manufactured from phosphor bronze or Copper Alloy 725

● **Plating:**

- 1) All over gold is plated to MIL-G-45204 Type II over .000050 (1.27µm) minimum Nickel.
- 2) Selective gold stripe is plated on the mating surface only, over .000030 (.76µm) minimum Nickel. Tail unplated.
- 3) other platings are available on request.

● **Inserts:** Nickel plated brass.

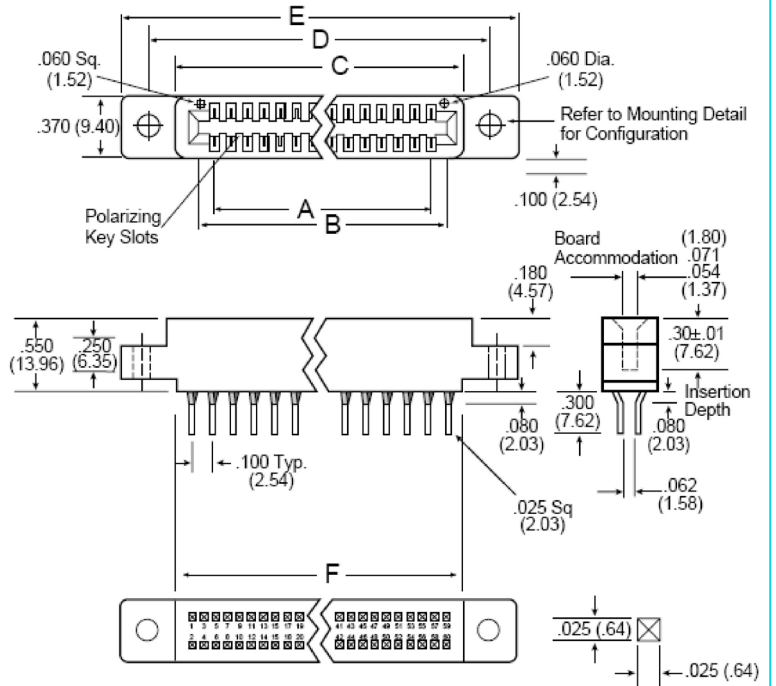
Polarising Key: Nylon. Colour: white

Operating Characteristics:

● Insertion/withdrawal forces to MIL-C-21097C
 Insertion: 2-10oz per opposing pair of contacts when using .062 (1.57) steel test blade
 Withdrawal: 1oz min. when using .054 (1.37) steel test blade.

● **Temperature Range:**

- 140°C continuous; 215°C short duration
- Operating Voltage: 600 VDC (sea level)
- Current: 3 amps
- Voltage Drop: will not exceed 30 mV at rated current



Contact identification

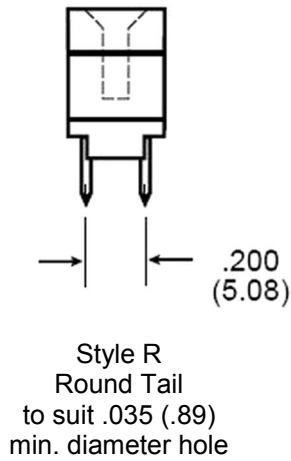
- 1,3,5.....139
- 2,4,6.....140



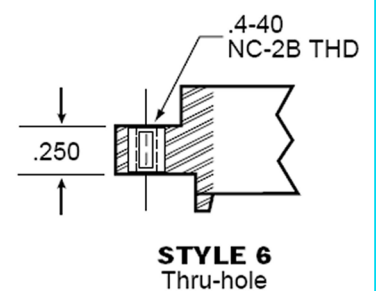
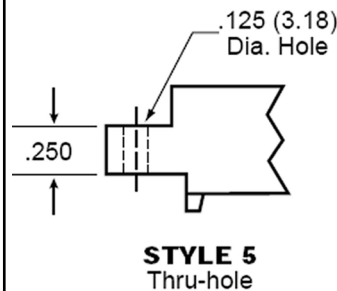
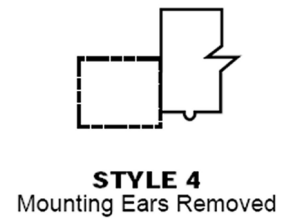
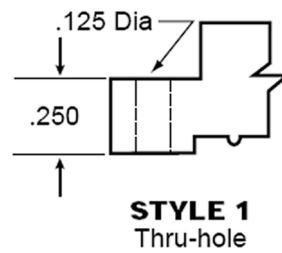
Polarising key
 order separately
 part number PK04

Refer to dimensions in Table B

termination styles



mounting styles



NOTE:
Additional mounting styles and hole sizes
available upon request

Ordering Code

CO - 2 100 - 22 - D R - 5 - (MOD)

Contact Plating:
CO = .000010 in. (.25 microns) Au minimum all over
CK= .000010-.000015 in. (.25-.37 microns) Au on the mating
surface only, remainder plated tin lead.

Insulator Material:
See general information

Contact Spacing: .100 in. (2.54)

No. of contact pairs

Dual Read-out:

Contact Termination:
R = Round Tail

Mounting Style:
see above

Special Modifications

TABLE A							INCHES						MILLIMETERS					
no of cont.	A ±.010	B ±.010	C ±.015	D ±.015	E ±.020	F ±.008	A ±0.25	B ±0.25	C ±0.38	D ±0.38	E ±0.51	F ±0.20						
5/10	.400	.600	.775	1.075	1.375	.330	10.16	15.24	19.69	27.31	34.93	8.38						
6/12	.500	.700	.875	1.175	1.475	.330	12.70	17.78	22.23	29.85	37.47	8.38						
8/16	.700	.900	1.075	1.375	1.675	.330	17.78	22.86	7.31	34.93	42.55	8.38						
10/20	.900	1.100	1.275	1.575	1.875	.330	22.86	27.94	32.39	40.01	47.63	8.38						
12/24	1.100	1.300	1.475	1.775	2.075	.330	27.94	33.02	37.47	45.09	52.71	8.38						
13/26	1.200	1.400	1.575	1.875	2.175	.330	30.48	35.56	40.01	47.63	55.25	8.38						
15/30	1.400	1.600	1.775	2.075	2.375	.330	35.56	40.64	45.09	52.71	60.33	8.38						
18/36	1.700	1.900	2.075	2.375	2.675	.330	43.18	48.26	52.71	60.33	67.95	8.38						
19/38	1.800	2.000	2.175	2.475	2.775	.330	45.72	50.80	55.25	62.87	70.49	8.38						
20/40	1.900	2.100	2.275	2.575	2.875	.330	48.26	53.34	57.79	65.41	73.03	8.38						
22/44	2.100	2.300	2.475	2.775	3.075	.330	53.34	58.42	62.87	70.49	78.75	8.38						
25/50	2.400	2.600	2.775	3.075	3.375	.330	60.96	66.04	70.49	78.11	85.73	8.38						
26.52	2.500	2.700	2.875	3.175	3.475	.330	63.50	68.58	73.03	80.65	88.27	8.38						
28/56	2.700	2.900	3.075	3.375	3.675	.330	68.58	73.66	78.11	85.73	93.35	8.38						
30/60	2.900	3.100	3.275	3.575	3.875	.330	73.66	78.74	83.19	90.81	98.43	8.38						
31/62	3.000	3.200	3.375	3.675	3.975	.330	76.20	81.28	85.73	93.35	100.97	8.38						
35/70	3.400	3.600	3.775	4.075	4.375	.400	86.36	91.44	95.89	103.51	111.13	10.16						
36/72	3.500	3.700	3.875	4.175	4.475	.400	88.90	93.98	98.43	106.05	113.67	10.16						
40/80	3.900	4.100	4.275	4.575	4.875	.400	99.06	104.14	108.59	116.21	123.83	10.16						
43/86	4.200	4.400	4.575	4.875	5.175	.400	106.68	111.76	116.21	123.83	131.45	10.16						
44/88	4.300	4.500	4.675	4.975	5.275	.400	109.22	114.30	118.75	126.37	133.99	10.16						
50/100	4.900	5.100	5.275	5.575	5.875	.400	124.46	129.54	133.99	141.61	149.23	10.16						
60/120	5.900	6.100	6.275	6.575	6.875	.400	149.86	154.94	159.39	167.01	174.63	10.16						

TABLE B							INCHES						MILLIMETERS					
no of cont.	A ±.010	B ±.010	C ±.015	D ±.015	E ±.020	F ±.015	A ±0.25	B ±0.25	C ±0.38	D ±0.38	E ±0.51	F ±0.20						
6/12	.500	.700	.860	1.175	1.435	.750	12.70	17.78	21.84	29.85	36.45	19.05						
8/16	.700	.900	1.060	1.375	1.635	.950	17.78	22.86	26.92	34.93	41.53	24.13						
10/20	.900	1.100	1.260	1.575	1.85	1.150	22.86	27.94	32.00	40.01	46.61	29.21						
12/24	1.100	1.300	1.460	1.775	2.035	1.350	27.94	33.02	37.08	45.09	51.69	34.29						
15/30	1.400	1.600	1.760	2.075	2.335	1.650	35.56	40.64	44.70	52.71	59.31	41.91						
17/34	1.600	1.800	1.960	2.275	2.535	1.850	40.64	45.72	49.78	57.79	64.39	46.99						
18/36	1.700	1.900	2.060	2.375	2.635	1.950	43.18	48.26	52.32	60.33	66.93	49.53						
20/40	1.900	2.100	2.260	2.575	2.835	2.150	48.26	53.34	57.40	65.41	72.01	54.61						
22/44	2.100	2.300	2.460	2.775	3.035	2.350	53.34	58.42	62.48	70.49	77.09	56.69						
25/50	2.400	2.600	2.760	3.075	3.335	2.650	60.96	66.04	70.10	78.11	84.71	67.31						
28/56	2.700	2.900	3.060	3.375	3.635	2.950	68.58	73.66	77.72	85.73	92.33	74.93						
30/60	2.900	3.100	3.260	3.575	3.835	3.150	73.66	78.74	82.80	90.81	97.41	80.01						
31/62	3.000	3.200	3.360	3.675	3.935	3.250	76.20	81.28	85.34	93.35	99.95	82.55						
35/70	3.400	3.600	3.760	4.075	4.335	3.650	86.36	91.44	95.50	103.51	110.11	92.71						
36/72	3.500	3.700	3.860	4.175	4.435	3.750	88.90	93.98	98.43	106.05	112.65	95.25						
40/80	3.900	4.100	4.260	4.575	4.835	4.150	99.06	104.14	108.59	116.21	122.81	105.41						
43/86	4.200	4.400	4.560	4.875	5.135	4.450	106.68	111.76	115.82	123.83	130.43	113.03						
44/88	4.300	4.500	4.660	4.975	5.235	4.550	109.22	114.30	118.36	126.37	132.97	115.57						
49/98	4.800	5.000	5.160	5.475	5.735	5.050	121.92	127.00	131.06	139.07	145.67	128.27						
50/100	4.900	5.100	5.260	5.575	5.835	5.150	124.46	129.54	133.60	141.61	148.21	130.81						
55/110	5.400	5.600	5.760	6.075	6.335	5.650	137.16	142.24	146.30	154.31	160.91	143.51						
60/120	5.900	6.100	6.260	6.575	6.835	6.150	149.86	154.94	159.00	167.01	173.61	156.21						
61/122	6.000	6.200	6.360	6.675	6.935	6.250	152.40	157.48	161.54	169.55	176.15	158.75						
65.10	6.400	6.600	6.760	7.073	7.335	6.650	162.56	167.64	171.70	179.71	186.31	168.91						
70/140	6.900	7.100	7.260	7.575	7.835	7.150	175.26	180.34	184.40	192.41	199.01	181.61						

.125" series (3.17mm)

◆ **dip solder**

general information

Materials & Finishes

Insulators: Glass filled polyester (G.E. Valox 420-SEO or equivalent). Colour UL approved. other colours and materials available on request.

Contacts: Bifurcated semi bellows design manufactured from phosphor bronze or Copper Alloy 725

● **Plating:**

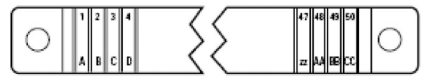
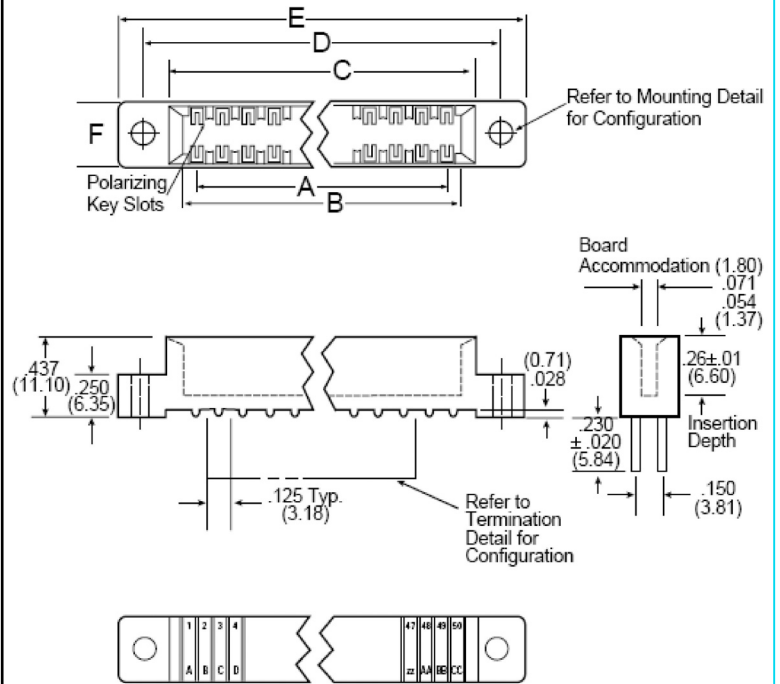
- 1) All over gold is plated to MIL-G-45204 Type II over .000050 (1.27µm) minimum Nickel.
- 2) Selective gold stripe on the mating surface only, over .000030 (.76µm) minimum Nickel. Tail unplated.
- 3) other platings are available on request.

● **Inserts:** Nickel plated brass.

Polarising Key: Nylon. Colour: white

Operating Characteristics:

- Insertion/withdrawal forces to MIL-C-21097C
Insertion: 2-16oz per opposing pair of contacts when using .062 (1.57) steel test blade
Withdrawal: 1oz min. when using .054 (1.37) steel test blade.
- **Temperature Range:**
140°C continuous; 215°C short duration
- Operating Voltage: 800 VDC (sea level)
- Current: 3 amps
- Voltage Drop: will not exceed 30 mV at rated current



Contact Identification
 1, 2, 3 50
 A, B, C, aa, bb, cc AA, BB, CC

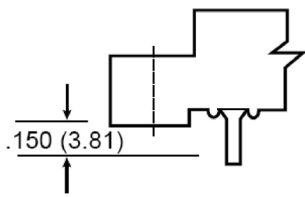


Polarising Key
 order separately
 part number PK03

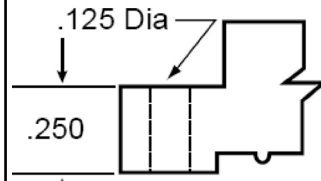
Refer to dimensions in Table C

termination styles

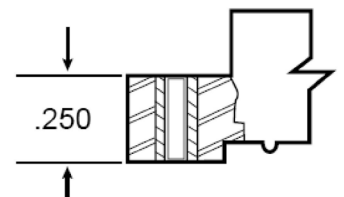
mounting styles



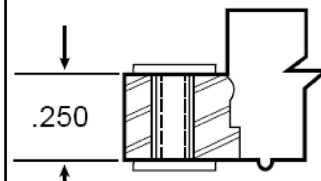
STYLE S
Dip Solder



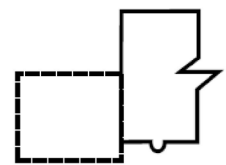
STYLE 1
Thru-hole



STYLE 2
Threaded Insert



STYLE 3
Floating Bobbin



STYLE 4
Mounting Ears Removed

NOTE:
Additional mounting styles and
hole sizes available upon request

Ordering Code

CO - 2 125 - 22 - D S - 1 - (MOD)

Contact Plating:
CO = .000010 in. (.25 microns) Au minimum all over
CS = .000010-.000015 in. (.25-.37 microns) Au on the mating
surface only, remainder unplated (Copper Alloy 725).

Insulator Material:
See general information

Contact Spacing: .125 in. (3.17)

No. of contact pairs

Dual Read-out:

Contact Termination:
S = Dip Solder

Mounting Style:
see above

Special Modifications

.125" series (3.17mm)

- ◆ wire wrap
- ◆ right angled
- ◆ extender card
- ◆ flow solder

general information

Materials & Finishes

Insulators: Glass filled polyester (G.E. Valox 420-SEO or equivalent). Colour UL approved. other colours and materials available on request.

Contacts: Bifurcated semi bellows design manufactured from phosphor bronze or Copper Alloy 725

• Plating:

- 1) All over gold is plated to MIL-G-45204 Type II over .000050 (1.27µm) minimum Nickel.
- 2) Selective gold stripe on the mating surface only, over .000030 (.76µm) minimum Nickel. Tail unplated.
- 3) other platings are available on request.

• Inserts: Nickel plated brass.

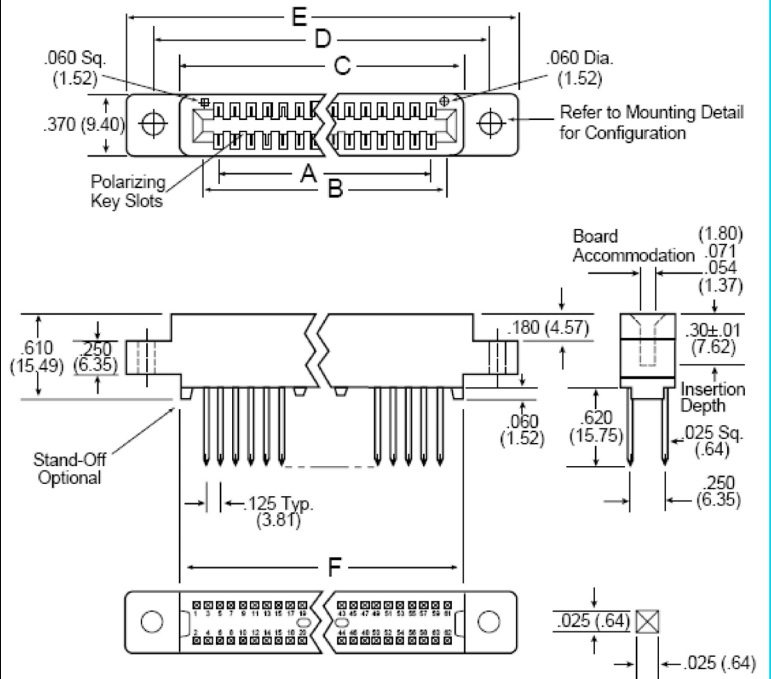
Polarising Key: Nylon. Colour: white

Operating Characteristics:

• Insertion/withdrawal forces to MIL-C-21097C
 Insertion: 2-10oz per opposing pair of contacts when using .062 (1.57) steel test blade
 Withdrawal: 1oz min. when using .054 (1.37) steel test blade.

• Temperature Range:

- 140°C continuous; 215°C short duration
- Operating Voltage: 800 VDC (sea level)
- Current: 3 amps
- Voltage Drop: will not exceed 30 mV at rated current



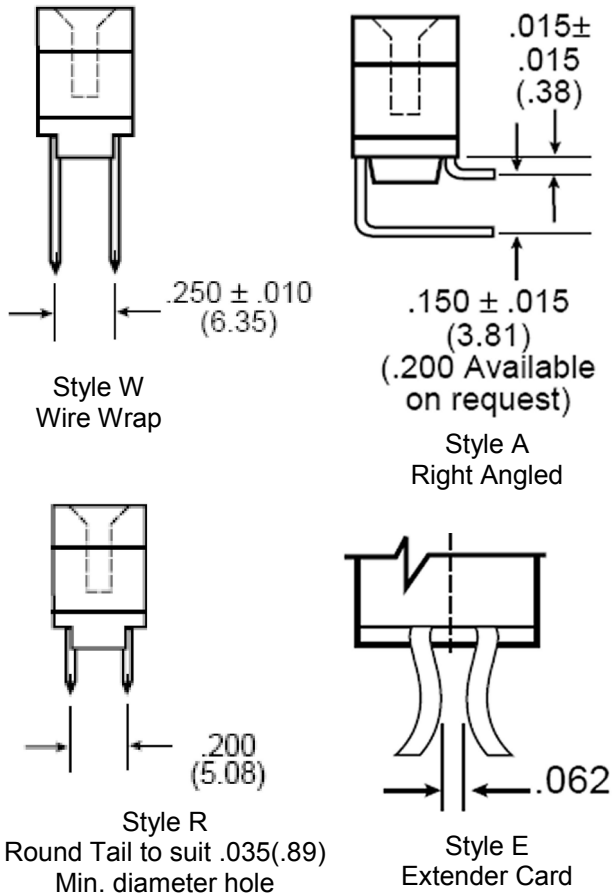
Contact identification
 1,2,3.....99
 2,4,60.....100



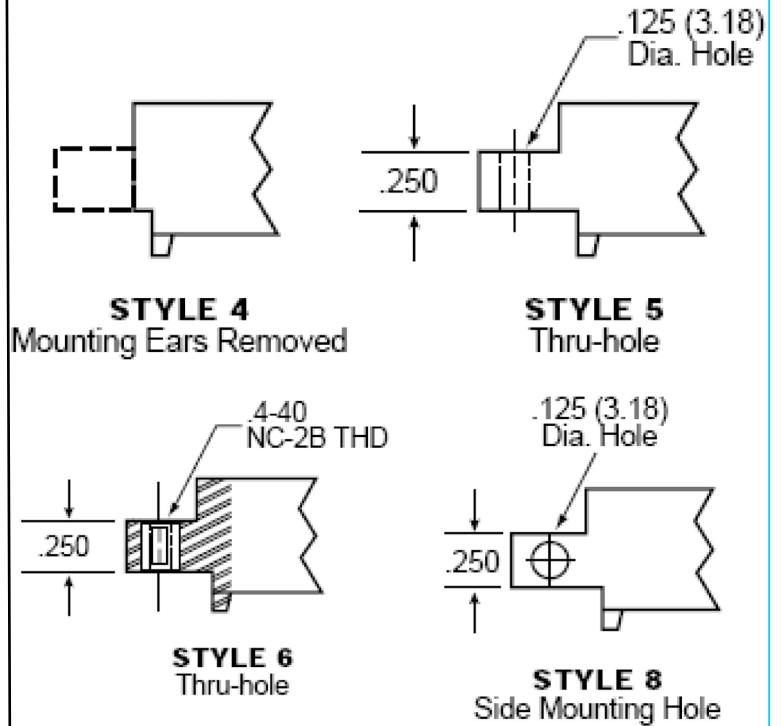
Polarising key
 order separately
 part number PK04

Refer to dimensions in Table D

termination styles



mounting styles



NOTE:
Additional mounting styles and hole sizes available upon request

Ordering Code

CO - 2 125 - 18 - D W - 5 - (MOD)

Contact Plating:

CO = .000010 in. (.25 microns) Au minimum all over
CK = .000010-.000015 in. (.25-.37 microns) Au on the mating surface only, remainder plated tin lead

Insulator Material:

See general information

Contact Spacing: $.125$ in. (3.17)

No. of contact pairs

Dual Read-out:

Contact Termination:

W = Wire Wrap
A - Right Angled
E - Extender Card
R - Round Tail

Mounting Style:

see above

Special Modifications

TABLE C		INCHES					MILLIMETERS					
no of cont.	A ±.010	B ±.010	C ±.015	D ±.015	E ±.020	F ±.008	A ±0.25	B ±0.25	C ±0.38	D ±0.38	E ±0.51	F ±0.20
10/20	1.125	1.375	1.535	1.795	2.075	.330	28.58	34.93	38.99	45.59	52.71	8.38
15/30	1.750	2.000	2.160	2.420	2.700	.330	44.45	50.80	54.86	61.47	68.58	8.38
18/36	2.125	2.375	2.535	2.795	3.075	.330	53.98	60.33	64.39	70.99	78.11	8.38
22/44	2.625	2.875	3.035	3.295	3.575	.330	66.68	73.03	77.09	83.69	90.81	8.38
28/56	3.375	3.625	3.785	4.045	4.325	.330	85.73	92.08	96.14	102.74	109.86	8.38
30/60	3.625	3.875	4.035	4.295	4.575	.330	92.08	98.43	102.49	109.09	116.21	8.38
31/62	3.750	4.000	4.160	4.420	4.700	.330	95.25	101.60	105.66	112.27	119.38	8.38
35/70	4.250	4.500	4.660	4.920	5.200	.330	107.95	114.30	118.36	124.97	132.08	8.38
36/72	4.375	4.625	4.785	5.045	5.325	.330	111.13	117.48	121.54	128.14	135.26	8.38
40/80	4.875	5.125	5.285	5.545	5.825	.370	123.83	130.18	134.24	140.84	147.96	9.40
43/86	5.250	5.500	5.660	5.920	6.200	.370	133.35	139.70	143.76	150.37	157.48	9.40
44/88	5.375	5.625	5.785	6.045	6.325	.370	136.53	142.88	146.94	153.54	160.66	9.40
50/100	6.125	6.375	6.535	6.795	7.075	.370	155.58	161.93	165.99	172.59	179.71	9.40

TABLE D		INCHES					MILLIMETERS					
no of cont.	A ±.010	B ±.010	C ±.015	D ±.015	E ±.020	F ±.015	A ±0.25	B ±0.25	C ±0.38	D ±0.38	E ±0.51	F ±0.20
6/12	.625	.875	1.035	1.295	1.555	.875	15.88	22.23	26.29	32.89	39.50	15.88
10/20	1.125	1.375	1.535	1.795	2.055	1.375	28.58	34.93	38.99	45.59	52.20	34.93
15/30	1.750	2.000	2.160	2.420	2.680	2.000	44.45	50.80	54.86	51.47	68.07	50.80
18/36	2.125	2.375	2.535	2.795	3.055	2.375	53.98	60.33	64.39	70.99	77.60	60.33
22/44	2.625	2.875	3.035	3.295	3.555	2.875	66.68	73.03	77.09	83.69	90.30	73.03
25/50	3.000	3.250	3.410	3.670	3.930	3.250	76.20	82.55	86.61	93.21	99.82	76.20
28/56	3.375	3.625	3.785	4.045	4.305	3.625	85.73	92.08	96.14	102.74	109.35	92.08
30/60	3.625	3.875	4.035	4.295	4.555	3.875	92.08	98.43	102.49	109.09	115.70	98.43
31/62	3.750	4.000	4.160	4.420	4.680	4.000	92.25	101.60	105.66	112.27	118.87	101.60
32/64	3.875	4.125	4.285	4.545	4.805	4.125	98.43	104.78	108.84	115.44	122.05	104.78
35/70	4.250	4.500	4.660	4.920	5.180	4.500	107.95	114.30	118.36	124.97	131.57	114.30
36/72	4.375	4.625	4.785	5.045	5.305	4.625	111.13	117.48	121.54	128.14	134.75	117.48
40/80	4.875	5.125	5.285	5.545	5.805	5.125	123.83	130.18	134.24	140.84	147.45	130.18
43/86	5.250	5.500	5.660	5.920	6.180	5.500	133.35	139.70	143.76	150.37	156.97	139.70
44/88	5.375	5.625	5.785	6.045	6.305	5.625	136.52	142.87	146.93	153.54	160.14	142.87
49/98	6.000	6.250	6.410	6.670	6.930	6.250	152.40	158.75	162.81	169.42	176.02	158.75
50/100	6.125	6.375	6.535	6.795	7.055	6.375	155.58	161.93	165.99	172.59	179.20	161.93

.156" series (3.96mm)

- ◆ dip solder
- ◆ pierced tail

general information
Materials & Finishes

Insulators: Glass filled polyester (G.E. Valox 420-SEO or equivalent). Colour UL approved. other colours and materials available on request.

Contacts: Bifurcated semi bellows design manufactured from phosphor bronze or Copper Alloy 725

• Plating:

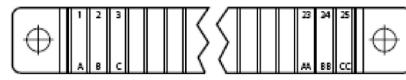
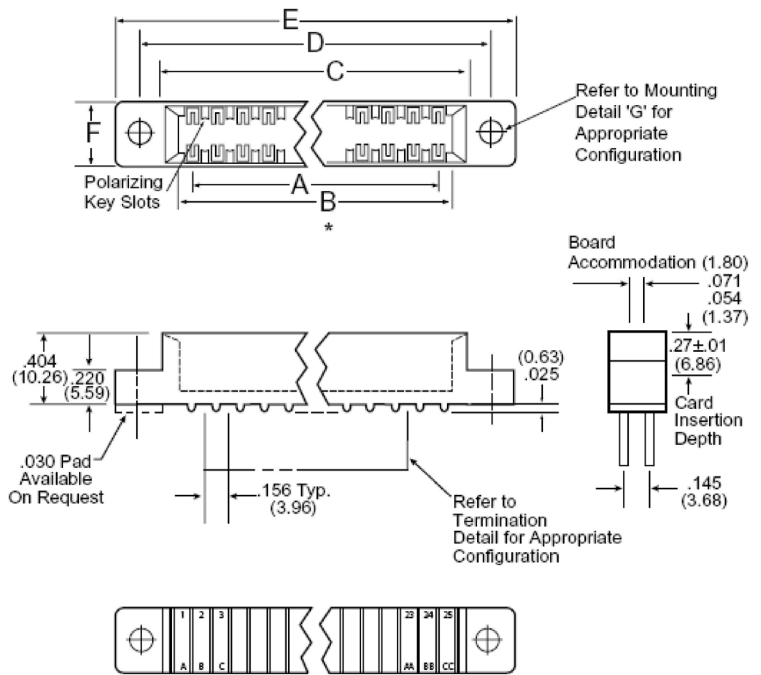
- 1) All over gold is plated to MIL-G-45204 Type II over .000050 (1.27µm) minimum Nickel.
- 2) Selective gold stripe on the mating surface only, over .000030 (.76µm) minimum Nickel. Tail unplated.
- 3) other platings are available on request.

• Inserts: Nickel plated brass.
Polarising Key: Nylon. Colour: white

Operating Characteristics:

• Insertion/withdrawal forces to MIL-C-21097C
Insertion: 2-16oz per opposing pair of contacts when using .062 (1.57) steel test blade
Withdrawal: 1oz min. when using .054 (1.37) steel test blade.

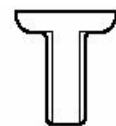
- Temperature Range:**
140°C continuous; 215°C short duration
- Operating Voltage:** 1800 VDC (sea level)
- Current:** 3 amps
- Voltage Drop:** will not exceed 30 mV at rated current



contact identification 2/4 to 30/60
1,2,3.....29, 30
A, B, C ... HH, JJ
Omit letters G, I, O, Q
contact identification 36/72 43/86
A, B, C ... ABC ... R
1, 2, 3 ... 36
Omit letters G, I, O, Q



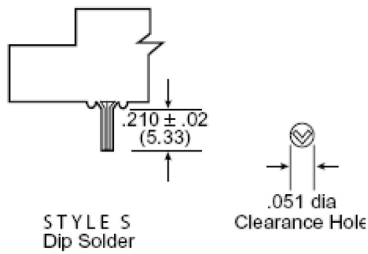
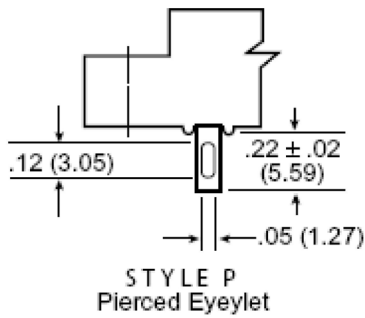
Between contact
Polarising Key
order separately
part number PK01



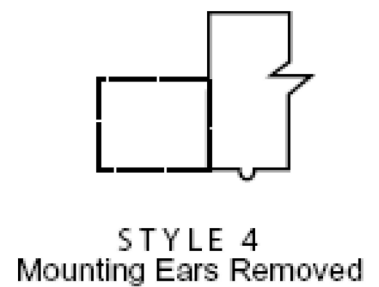
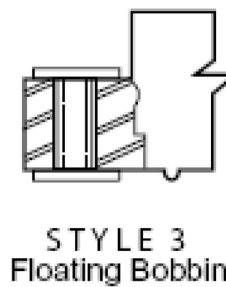
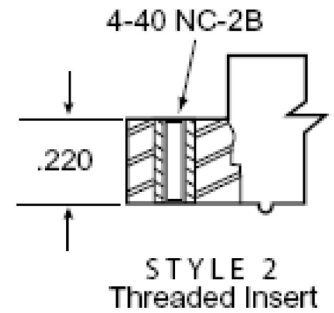
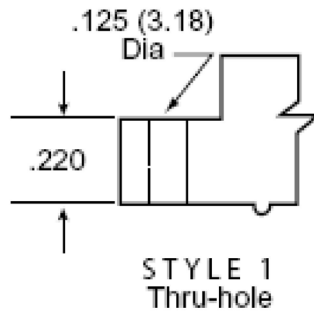
In contact position
Polarising Key
order separately
part number PK02

Refer to dimensions in Table E

termination styles



mounting styles



NOTE:
Additional mounting styles and
hole sizes available upon request

Ordering Code

CO - 2 156 - 15 - D P - 1 - (MOD)

Contact Plating:

CO = .000010 in. (.25 microns) Au minimum all over
CS = .000010-.000015 in. (.25-.37 microns) Au on the mating surface only, remainder unplated (Copper Alloy 725).

Insulator Material:

See general information

Contact Spacing: .156 in. (3.96)

No. of contact pairs

Read-out:

D = Dual read-out
S = Single read-out

Contact Termination:

P = Pierced Tail
S = Dip Solder

Mounting Style:

see above

Special Modifications

.156" series (3.96mm)

- ◆ wire wrap
- ◆ right angled
- ◆ extender card
- ◆ flow solder

general information

Materials & Finishes

Insulators: Glass filled polyester (G.E. Valox 420-SEO or equivalent). Colour Green UL approved. other colours and materials available on request.

Contacts: Bifurcated semi bellows design manufactured from phosphor bronze or Copper Alloy 725

• Plating:

- 1) All over gold is plated to MIL-G-45204 Type II over .000050 (1.27µm) minimum Nickel.
- 2) Selective gold stripe on the mating surface only, over .000030 (.76µm) minimum Nickel. Tail unplated.
- 3) other platings are available on request.

• Inserts: Nickel plated brass.

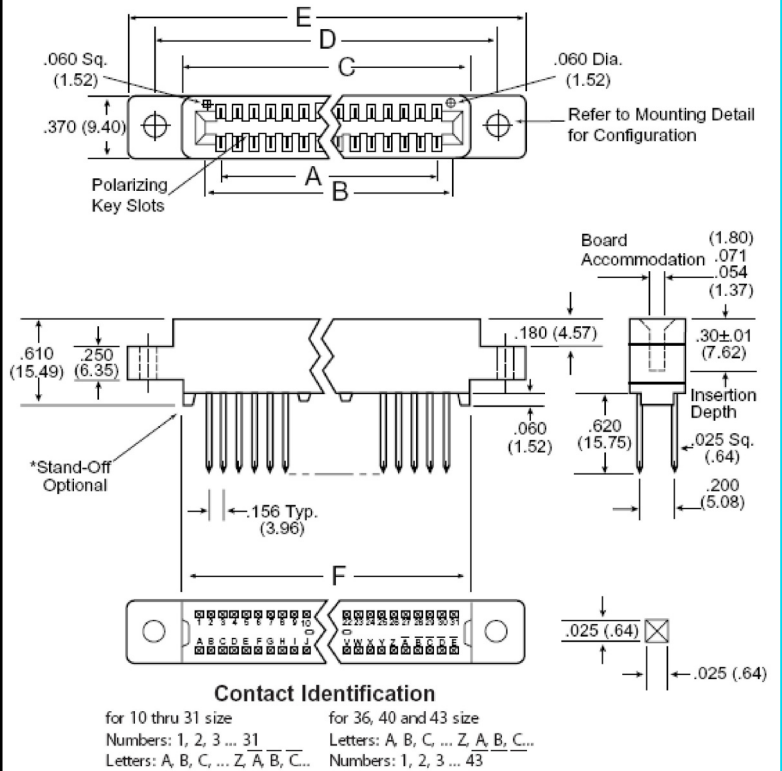
• Polarising Key: Nylon. Colour: white

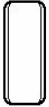
Operating Characteristics:

• Insertion/withdrawal forces to MIL-C-21097C
 Insertion: 2-10oz per opposing pair of contacts when using .062 (1.57) steel test blade
 Withdrawal: 1oz min. when using .054 (1.37) steel test blade.

• Temperature Range:

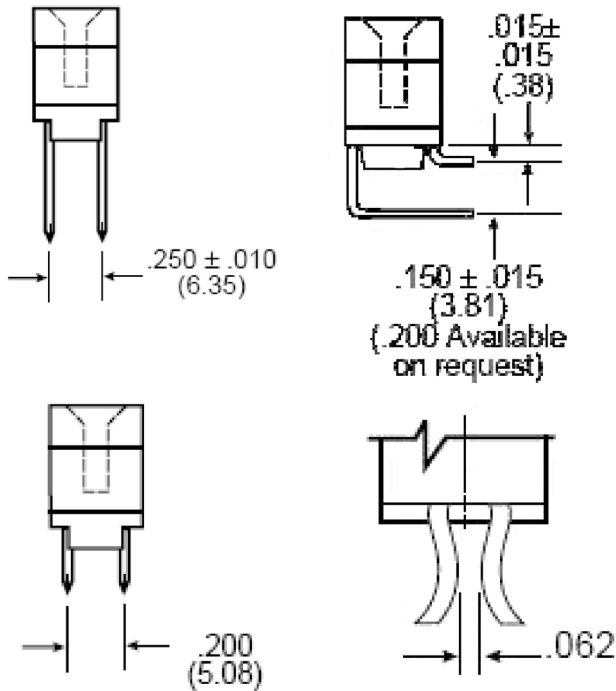
- 140°C continuous; 215°C short duration
- Operating Voltage: 1800 VDC (sea level)
- Current: 3 amps
- Voltage Drop: will not exceed 30 mV at rated current




 Polarising key
 order separately
 part number PK04

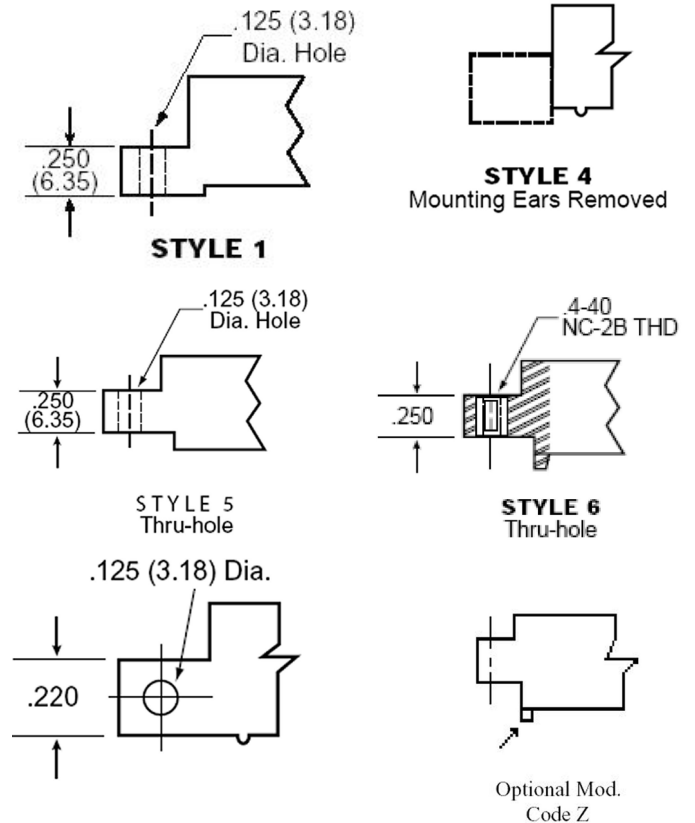
Refer to dimensions in Table F

termination styles



NOTE: Other contact lengths available upon request. Contacts are 0.25 (.64) square except the round tail version

mounting styles



NOTE: If stand-offs are required with this series the modification code 'Z' should be used in the appropriate position in the part number

Ordering Code

CO - 2 156 - 24 - D W - 5 - (MOD)

Contact Plating:
 CO = .000010 in. (.25 microns) Au minimum all over
 CK = .000010-.000015 in. (.25-.37 microns) Au on the mating surface only, remainder plated tin lead.

Insulator Material:
 See general information

Contact Spacing: .156 in. (3.96)

No. of contact pairs

Dual Read-out:

Contact Termination:
 W = Wire Wrap
 A = Right Angled
 E = Extender Card
 R = Round Tail

Mounting Style:
 see above

Special Modifications

TABLE E		INCHES					MILLIMETERS					
no of cont.	A ±.010	B ±.010	C ±.015	D ±.010	E ±.020	F ±.006	A ±0.25	B ±0.25	C ±0.38	D ±0.25	E ±0.51	F ±0.38
2/4	.156	.456	.596	-	-	.320	3.96	11.58	15.14	-	-	8.13
3/6	.312	.612	.752	-	-	.320	7.93	15.55	19.10	-	-	8.13
6/12	.780	1.080	1.220	1.533	1.860	.320	19.81	27.43	30.99	38.94	47.24	8.13
8/16	1.092	1.392	1.532	1.845	2.172	.320	27.74	35.36	38.91	46.86	55.17	8.13
10/20	1.404	1.704	1.844	2.157	2.484	.320	35.66	43.28	46.84	54.79	63.09	8.13
11/22	1.560	1.860	2.000	2.313	2.640	.320	39.62	47.24	50.80	58.75	67.06	8.13
12/24	1.716	2.016	2.156	2.469	2.796	.320	43.59	51.21	54.76	62.71	71.02	8.13
15/30	2.184	2.484	2.624	2.937	3.264	.320	55.47	63.09	66.65	74.60	82.91	8.13
18/36	2.652	2.952	3.092	3.405	3.732	.320	67.36	74.98	78.54	86.49	94.79	8.13
22/44	3.276	3.576	3.716	4.029	4.356	.320	83.21	90.83	94.39	102.34	110.64	8.13
24/48	3.588	3.888	4.028	4.341	4.668	.320	91.14	98.76	102.31	110.26	118.57	8.13
25/50	3.744	4.044	4.184	4.497	4.824	.320	95.10	102.72	106.27	114.22	122.53	8.13
28/56	4.212	4.512	4.652	4.965	5.276	.438	106.99	114.61	118.16	126.11	134.01	11.13
30/60	4.524	4.824	4.964	5.277	5.588	.500	114.91	122.53	126.09	134.04	141.94	12.70
36/72	5.460	5.762	5.906	6.219	6.540	.438	138.68	146.36	150.01	157.96	166.12	11.13
43/86	6.552	6.854	7.000	7.302	7.615	.500	166.42	174.09	177.80	185.47	193.42	12.70

TABLE F		INCHES					MILLIMETERS					
no of cont.	A ±.010	B ±.010	C ±.015	D ±.015	E ±.020	F ±.015	A ±0.25	B ±0.25	C ±0.38	D ±0.38	E ±0.51	F ±0.25
10/20	1.404	1.724	1.845	2.158	2.408	1.604	35.66	43.79	46.86	54.81	61.16	40.74
12/24	1.716	2.038	2.157	2.470	2.720	1.916	43.59	51.77	54.79	62.74	69.09	48.67
15/30	2.184	2.506	2.625	2.938	3.188	2.384	55.47	63.65	66.68	74.63	80.98	60.55
18/36	2.652	2.974	3.093	3.406	3.656	2.852	67.36	75.54	78.56	86.51	92.86	72.44
22/44	3.276	3.598	3.717	4.030	4.280	3.476	83.21	91.39	94.41	102.36	108.71	88.29
25/50	3.744	4.064	4.188	4.498	4.748	3.944	95.10	103.23	106.38	114.25	120.60	100.18
28/56	4.212	4.534	4.653	4.966	5.216	4.412	106.98	115.16	118.19	126.14	132.49	112.07
30/60	4.524	4.844	4.968	5.278	5.528	4.724	114.91	123.04	126.19	134.06	140.41	119.99
31/62	4.680	5.000	5.124	5.434	5.684	4.880	118.87	127.00	130.15	138.02	144.37	123.95
36/72	5.460	5.782	5.901	6.214	6.464	5.660	138.68	146.86	149.89	160.8	164.19	143.76
43/86	6.552	6.874	6.993	7.306	7.556	6.752	166.42	174.60	177.62	185.57	189.20	171.50

Polarising Keys

general information

Polarising Keys

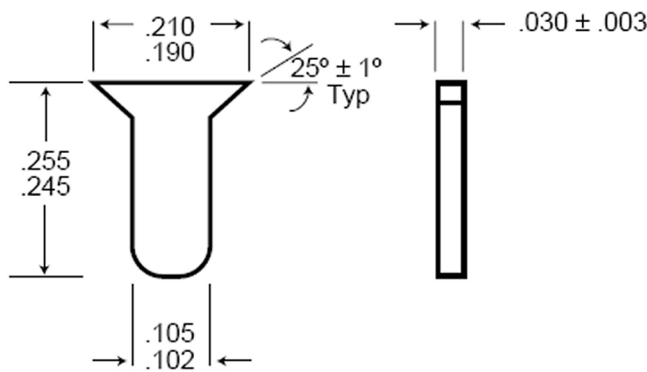
All of our connectors provide for between contact polarisation where the key is pressed into grooves between contacts.

An ‘in contact’ polarisation option is available on the .156 (3.96) Dip Solder and Pierced Tail versions.

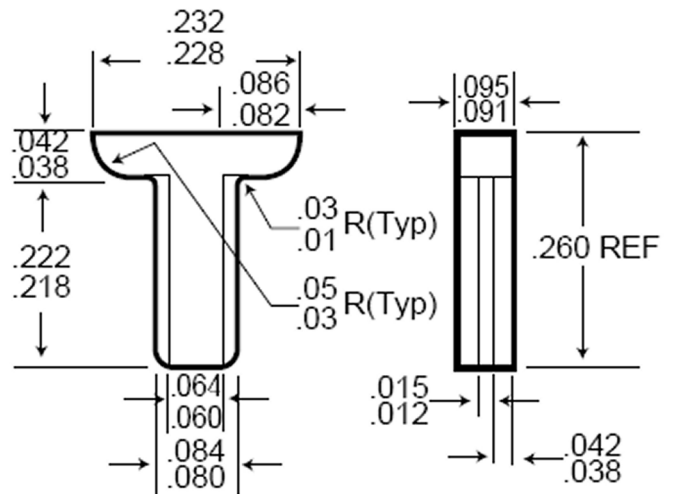
If ‘in contact’ polarisation is required, two opposing contacts must be removed. This will result in the loss of two circuits from a dual ‘read out’ connector and one circuit from a single row connector.

All polarisation keys are manufactured in glass filled Nylon.

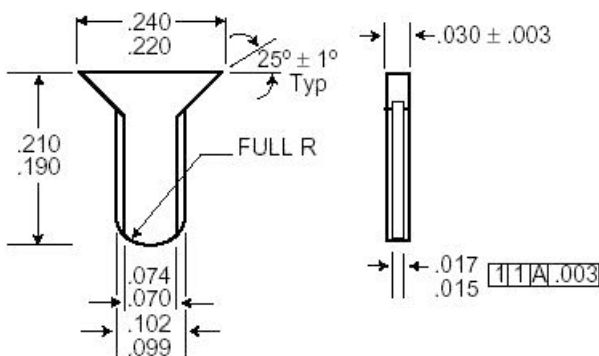
In most cases polarising keys are white in colour, but there are exceptions. Full details on request.



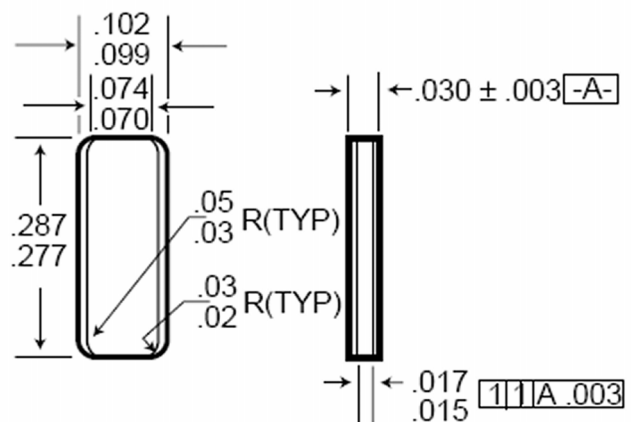
P/N PK01
slot dimensions
A = .038 (0.97)
B = .350 (8.89)



P/N PK02
slot dimensions:
A = .100 (2.54)
B = .350 (8.89)



P/N PK03
slot dimensions
A = .038 (0.97)
B = .350 (8.89)



P/N PK04
slot dimensions
A = .046 (1.17)
B = .350 (8.89)

NOTE: Other polarising keys available on request