

Camille Bauer Metrawatt AG



Rely on us. Under this motto, Camille Bauer Metrawatt AG has developed, produced and marketed electronic devices, sensors, systems and software – for more than 70 years. These instruments make invisible electric grid phenomena visible before they can have a detrimental effect on people and material.

Be it instruments or sensors – safety considerations are essential in both areas. Camille Bauer Metrawatt supplements these considerations by reliability, high quality and distinct customer orientation. This enables us to develop measuring solutions close to customers and in line with the market.

The medium-sized Swiss company, which is located in Wohlen, was founded in 1944 and has developed into a leading provider of high-quality industrial instrumentation. Since 1992, the company has been part of the GMC-Instruments group and can use the advantages of a strong corporation in many respects. Swiss salesmen are selling our products and services, as well as mobile appliance tester, installation testers and multimeters from Gossen Metrawatt in the local market.

Furthermore, Camille Bauer Metrawatt has its own international sales force and co-operates with eleven national companies world-wide owned by the group and more than 50 trading partners in 60 countries. A global network has thus been established ensuring competent, flexible and fast customer service. Our motto also applies in this respect: You can rely on the company at any time and anywhere. The main markets are Europe – particularly Switzerland, Germany and Austria – the Middle East, India and China. The export share amounts to 70 per cent.

The Metrawatt International group has five production sites, one of them being located in Wohlen in the canton of Aargau, where the Swiss company employs almost 90 associates working in the areas of production, research & product development, marketing and international sales. The company operates in two business fields. In the area of heavy current monitoring, highly precise instruments are developed allowing customers to check the com-

pliance with statutory regulations in electrical energy distribution, monitor limit values as well as record dynamic processes and statistical statements. The devices also serve online monitoring, energy monitoring as well as fault current detection.

A high degree of appreciation of all relevant measuring tasks in the areas of energy generation, energy distribution and energy consumption constitutes an essential core competence of the company. In times, in which the European energy market is undergoing considerable changes due to its liberalisation and the promotion of renewable energies, this competence is particularly sought. One thing is certain: Industrial plants will have more measuring points and measure more frequently in future to increase quality and productivity and to reduce energy consumption. This is one of the main challenges for Camille Bauer Metrawatt: recognising new and relevant market and customer requirements early on and implementing efficient, environment and market-oriented customer solutions promptly.



LINAX PQ3000

This is also true for the second business field of position sensors. Camille Bauer Metrawatt develops durable, non-wearing and patented sensors to monitor the position of the most varied plant parts, from crane booms through to off-shore platforms. This significantly contributes to increasing process and plant safety. The products are characterised by high resolution as well as quick and easy commissioning with simple diagnostics. And with their absolutely tight housings, they are predestined for use in dangerous and rugged environments.



KINAX N702-INOX HART

Four products exemplify the closeness of Camille Bauer Metrawatt to its customers and their needs. The new **LINAX PQ3000** is a Class A device according to the power quality standard IEC 61000-4-30 Ed.3. It provides power quality data, to increase system availability and identify problems before they can cause damage.

SINEAX AM3000 provides a clear view into the electric grid. This product is essential to Camille Bauer Metrawatt accomplishing its mission of monitoring all the invisible “vital functions” in the electric grid (current, voltage, frequency as well as derived variables) independently and thus ensuring stable and safe energy supply in future. The multi-functional power meter serves measuring and monitoring in heavy-current grids and excels with the quality of its display and intuitive operation.



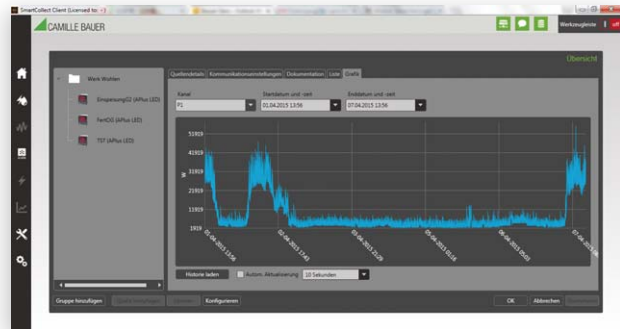
SINEAX AM3000

The new **KINAX N702** inclination transmitter converts inclination into a DC signal proportionate to the angle. This enables optimizing the operation of shut-off flaps and shut-off valves in power plants, the steel and chemical industry or in surface mining. KINAX N702 is also used in tracking photovoltaic plants ensuring that the panels follow the sun with the highest degree of precision. The devices excel, apart from their accuracy, with high durability and work unobjectionably also in adverse environmental conditions.



Gossen Metrawatt
SECUTEST Base

In **SMARTCOLLECT**, Camille Bauer Metrawatt has developed a system software for data analysis and energy management. It collects and graphically displays data and measured values of Camille Bauer and Gossen Metrawatt devices. This is particularly interesting for companies establishing load management. Such a system helps to optimise consumption and thus increase energy efficiency. The combination of hardware and software offers Camille Bauer Metrawatt’s customers tailor-made, reliable, durable and intuitive solutions.



SMARTCOLLECT SOFTWARE



Gossen Metrawatt
PROFITEST

CAMILLE BAUER METRAWATT AG
Aargauerstrasse 7 ■ 5610 Wohlen ■ Switzerland
TEL +41 56 618 21-11 ■ FAX +41 56 618 21-21

www.camillebauer.com ■ info@cbmag.com