

SURFBOARDS®



THE BREADBOARDING MEDIUM FOR SURFACE MOUNT™

SPECIAL PURPOSE CIRCUIT MODULES

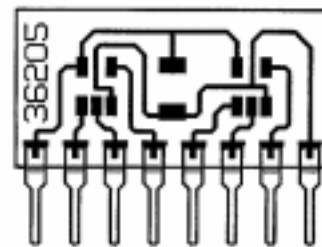
MODEL

36205

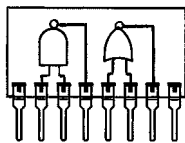
FOR USE WITH
 FAIRCHILD SEMICONDUCTOR **TinyLogic™***
 TEXAS INSTRUMENTS **Microgate™****
 5 LEAD SOT-23-5 SINGLE GATE LOGIC PACKAGES

BUILD CUSTOM LOGIC MODULES

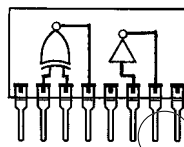
Model 36205 SURFBOARDS can support 2 SOT-23-5 SINGLE GATE Logic devices. Board footprints accept devices from Fairchild Semiconductor, Texas Instruments, and others. Any SOT-23-5 logic package sharing the same power and ground pin outs can be used. Install the devices of your choice to provide the desired functions. Great for prototype or short run production circuits. On board provision for mounting optional bypass capacitor is provided. Both devices share common power and ground connections allowing for the convenience of an 8 pin SIP package. Pins on .100 in. centers provide compatibility with breadboards and sockets. While sold as a bare module for user assembly, Capital can assemble with your specified parts if desired.



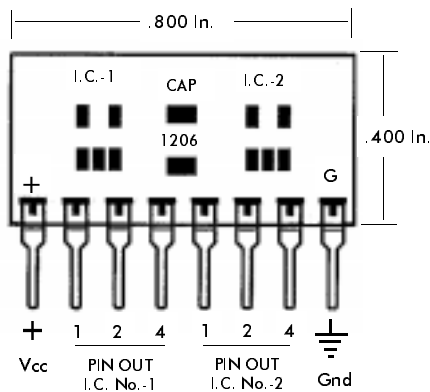
- * 8- PIN S.I.P. ONLY .400 in. TALL
- * SUPPORTS TWO LOGIC DEVICES
- * ON-BOARD BYPASS OPTION
- * DEVICES SHARE PWR AND GND
- * SINGLE-IN-LINE (SIP) PACKAGE
- * JUST ADD PARTS AND PLUG IN (TM)



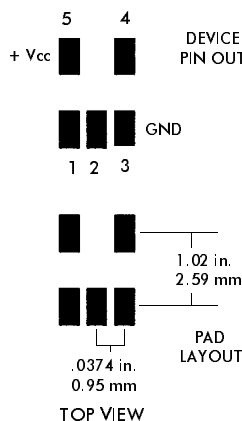
USER
 INSTALLED
 DEVICES
 DETERMINE
 FUNCTION



.100 CENTERS

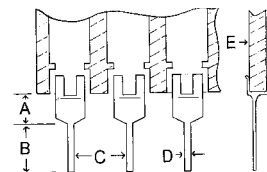


COMPONENT SIDE / FRONT VIEW



TOP VIEW

PIN SPECIFICATIONS / TOLERANCES



In Inches

- A = .062 ± .006
- B = .130 ± .010
- C = .100 ± .005
- D = .020 ± .004
- E = .031 ± .005

BOARD SPECIFICATIONS

- BOARD MATERIAL: .031 ± .005 In. Thick G-10 FR-4 Glass Epoxy or equivalent.
- CIRCUITS: 1oz Copper with solder coated pads 1 side
- SOLDER MASK: Epoxy
- TOLERANCES: Given in inches
- Board Size ± .020 / OAL ± .040
- Circuit pattern/position ± .005

* TinyLogic is a Trademark of Fairchild Semiconductor corp. ** Other Trademarks are the property of their respective owners.

Copyright 1998 by Capital Advanced Technologies, Inc. All rights reserved. Surfboards are a registered trademark of Capital Advanced Technologies, Inc. All other trademarks or registered trademarks are property of their respective owners. Availability, specifications, and prices are subject to change without notice. All information given is believed to be accurate but is not guaranteed. The user of information given or products represented by such information is responsible for determining the suitability of said information or products for a given purpose.

CAPITAL ADVANCED TECHNOLOGIES, INC.
 CAROL STREAM, IL. USA. 630-690-1696