

Model 23 Shock Test System

Lansmont's Model 23 Shock Test System is an extremely versatile testing machine. In addition to performing a wide variety of programmable shock tests, the Model 23 can also perform materials impact evaluation (cushion testing) or artificial turf testing with optional platens and impact forms. The Model 23 features an electronic hoist lifting system for easy table positioning and can be outfitted with an optional floating seismic reaction mass to isolate shock energy from transmitting to the surrounding laboratory space. The Model 23 comes standard with Lansmont's NEW TouchTest Shock II Table Top Control Console.

Model 23 Features:

- Testing versatility- the Model 23 can also be used for cushion testing or artificial turf testing.
- Single-faced solid aluminum carriage with tabletop hole pattern.
- Lansmont's TouchTest Shock II Controls incorporated with Lansmont's Test Partner 3 Data Acquisition System provide the most powerful shock system controller available!
- Half sine, trapezoidal, and terminal peak sawtooth shock pulse capabilities.
- Electric hoist for table position.
- Full range of applications training programs available.
- Worldwide Customer Service department.



Model 23 Shock Test System

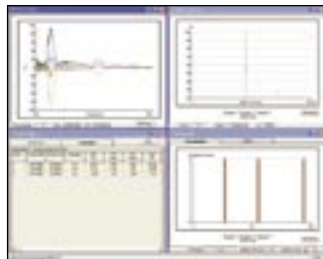
TECHNICAL SPECIFICATIONS

PHYSICAL	
Maximum Specimen Weight	80 lb. (36 kg.)
Table Mounting Surface:	
Side to Side (between guide rods)	9.06 in. (23 cm)
Front to Back	9.06 in. (23 cm)
PERFORMANCE	
Maximum Acceleration	5000 g
Shock Pulse Duration Range	0.20 Msec – 60 Msec *
Maximum Velocity Change	Up to 36 Ft/Sec (10.9 M/sec)
MACHINE SIZE	
Height	96 in. – 120 in. (244 cm – 305 cm)
Front to Back	18 in. (46 cm)
Width	18 in. (46 cm)
UTILITIES	
Voltage	100 – 220 VAC
Frequency	50 Hz – 60 Hz
Phase	Single Phase
Current	4A – 8A
Nitrogen (For squarewave programmers only)	Bottled Nitrogen @ 2,000 psi (138 bar)
Plant Air	80 – 120 psi (5.6 – 8.4 kg/cm ²)
SHIPPING WEIGHT	
Shipping Weight	800 lbs. (363 kg) Approximate

* with appropriate programming kits

TouchTest Shock II Controls:

- Available in either Bench-Top or Full "System Station" packages.
- Fully integrated machine set-up and control.
- Touch-screen user interface.
- New shock pulse predictor feature...makes setting up shock pulses easier than ever.
- Automatically communicates with Lansmont's Test Partner 3 Data Acquisition and Analysis System for the most advanced shock analysis ever.



Lansmont
Corporation