



Self-Clinching Slide-Top Standoffs

Series CFSKC



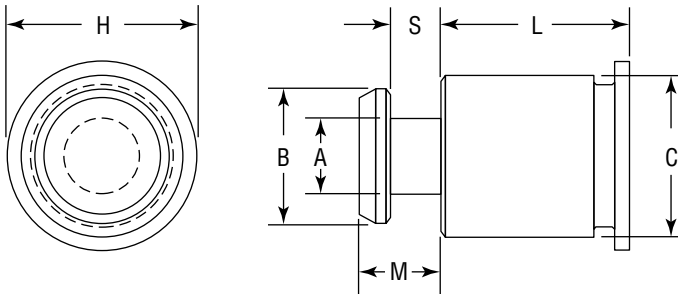
CFSKC slide-top standoffs are designed for a PC board or panel to be quickly attached and removed with a simple sliding motion. The slide-top standoffs provide advantages for reducing servicing time and eliminate the problems associated with loose hardware. Several slide-top standoffs can be used in conjunction with a Captive threaded standoff to lock the board in place.

Series	Material	Finish
CFSKC	300 Series Stainless Steel	Passivated ASTM A967

Use in: Materials HRB-70 or less.

Part Number Structure:

CFSKC 6060-6



Dimensions & Specifications

INCH (in.)	Series	Body/ Hole Code	L Length ±.005 in. Length Code is in 32nds of an Inch											A ±.003	B ±.003	C Max.	S ±.003	M Max.	H Nom.	Anvil Hole Dia. +.003 -.000	
			.188	.250	.312	.375	.437	.500	.562	.625	.750	.875	1.00								
			-6	-8	-10	-12	-14	-16	-18	-20	-24	-28	-32								
CFSKC	6060		.188	.250	.312	.375	.437	.500	.562	.625	.750	.875	1.00	±.003	±.003	Max.	±.003	Max.	Nom.	+.003 -.000	
																					.216

Dimensions & Specifications

METRIC (mm)	Series	Body/ Hole Code	L Length ±.13mm.											A ±.08	B ±.08	C Max.	S ±.08	M Max.	H Nom.	Anvil Hole Dia. +.08 -.00	
			6	8	10	12	14	16	18	20	22	25									
			6	8	10	12	14	16	18	20†	22†	25†									
CFSKC	61.5		6	8	10	12	14	16	18	20†	22†	25†	±.08	±.08	Max.	±.08	Max.	Nom.	+.08 -.00		
																					5.5

† Not stocked, available on special order.

Installation & Performance Data

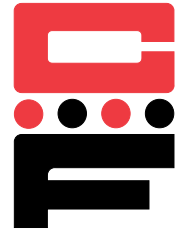
INCH (in.)	Body Size/ Hole Code	.060 in. (1.52mm) 5052-H34 Aluminum		.060 in. (1.52mm) Cold-rolled Steel	
		Installation (lbs.)	Pushout (lbs.)	Installation (lbs.)	Pushout (lbs.)
	6060	1600	250	3200	600
METRIC (mm)	61.5	(kN)	(N)	(kN)	(N)
		7.1	1100	14.2	2600

Continued on next page.

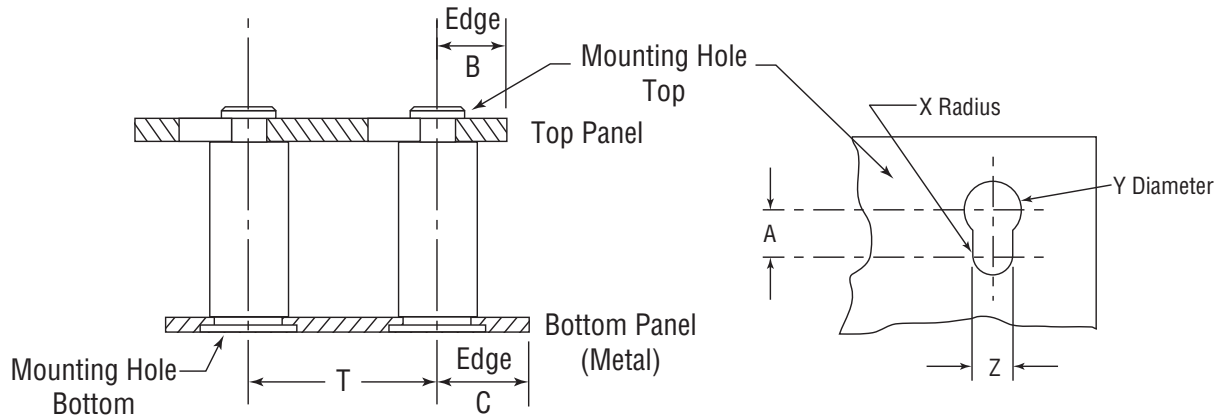


Self-Clinching Slide-Top Standoffs

Series CFSKC



Continued from previous page.



Installation & Performance Data

INCH (in.)	Bottom Panel				Top Panel						
	Bottom Mounting Hole +.003 -.000	Min.	C Min.	Location Tolerance T Max.	Top Mounting Hole				Material	Thickness Range	B Min.
					X Nom.	Y ±.003	Z ±.003	A Min.			
CFSKC	.213	.040	.260	±.005	.059	.197	.118	.148	PC Board or Metal	.057 - .064	.160

Installation & Performance Data

METRIC (mm)	Bottom Panel				Top Panel						
	Bottom Mounting Hole +.08 -.00	Min.	C Min.	Location Tolerance T Max.	Top Mounting Hole				Material	Thickness Range	B Min.
					X Nom.	Y ±.08	Z ±.08	A Min.			
CFSKC	5.41	1.02	6.6	±.13	1.5	5.0	3.0	3.75	PC Board or Metal	1.45 - 1.62	4.1