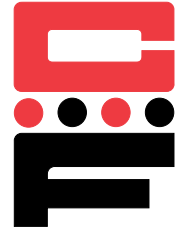


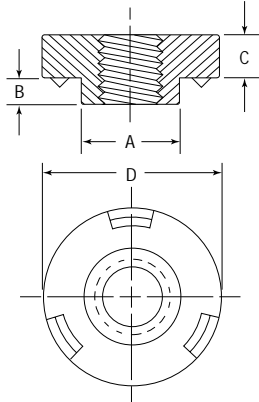


Weld Nuts

Series CFWN & CFWNS



CFWN weld nuts are the solution to providing load bearing threads in sheets that are too thin to tap. They provide three-point projections for fast, easy welding. Captive Fastener weld nuts self align into standard hole sizes, and are dimensionally identical to industry standards. The alignment collar orients the weld nut and prevents weld spatter from entering thread area.



Series	Material	Finish
CFWN	Carbon Steel	Light Oil Coat (Copper Flash Optional)
CFWNS	300 Series Stainless Steel	Passivated ASTM A380

Thread: Class 2B, MIL-S-7742; (6H ISO Metric).

Dimensions & Specifications

Thread Size	Part Number		Min.	+0.004 in. (+0.10 mm) - .000	A Max.	B Max.	C ± .004 in. (± 0.1 mm)	D +0.00 - .01 in. (- .25 mm)	Min.
	Carbon Steel	Stainless Steel							
INCH (in.)	#6-32	CFWN632	.030	.193	.191	.030	.093	.340	.17
		CFWN632-1	.060	.193	.191	.050			
	#8-32	CFWN832	.030	.218	.216	.030	.107	.370	.18
		CFWN832-1	.060	.218	.216	.050			
	#10-24	CFWN1024	.030	.250	.248	.030	.155	.440	.22
		CFWN1024-1	.060	.250	.248	.050			
#10-32	CFWN1032	.030	.250	.248	.030	.155	.440	.22	
	CFWN1032-1	.060	.250	.248	.050				
1/4-20	CFWN420	.050	.316	.315	.048	.185	.520	.26	
METRIC (mm)	M3 x 0.5	CFWNM3	0.75	4.4	4.37	0.77	1.5	7.95	4.5
	M4 x 0.7	CFWNM4	0.77	5.6	5.57	0.77	2.6	9.4	5.2
	M5 x 0.8	CFWNM5	0.77	6.4	6.33	0.77	3.8	11.1	5.7
	M6 x 1.0	CFWNM6	1.25	8.1	8.03	1.24	4.6	13.2	6.7

Continued on next page.