

Flow monitor for gaseous media



vent-captor 3204.xx

The **vent-captor 3204.xx** is a solid-state flow monitoring device for use in industrial airhandling applications. The vent-captor is a self-contained switch without any mechanical moving parts. The stainless steel housed vent-captor type 3204.xx is most suitable for use under pressure conditions.

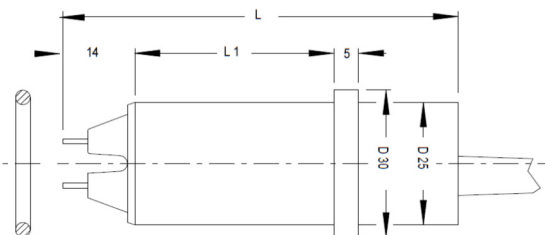


- Precise switching flow monitor for gaseous media
- Set-point adjustable from 1 m/s to 10 m/s
- Operates on the calorimetric principle without moving parts
- Temperature independent
- Universally applicable
- LED-display for output status
- **ISO 9001 : 2008**

Technical Data						
Type	3204.xx					
Medium	gaseous media					
Sensor Data *1						
Switching range	1 m/s to 10 m/s, continuously adjustable					
Factory setting	Approx. 3 m/s					
Medium temperature	-20 °C to +70 °C					
Ambient temperature	-20 °C to +70 °C					
Pressure	max .10 bar					
Response time	Min. 3 s / max. 100 s depends on set-point adjustment					
Temperature drift	< 0,5 % / K					
Repeatability	< 3%					
Hysteresis	< 30%					
Mechanical Data						
Protection class	IP 64					
Material sensor probe	Ceramic					
Material housing	Ultradur (PBTP), Stainless steel WN 1.4305 (AISI 303)					
Mounting accessories	Union nut G1A, SW 37 mm (WN 1.4305 / AISI 303)					
Electrical connection	2 m oilflex cable / 3 x 0,5 mm ²					
Body dimensions	Standard version: Ø 25 x 78 mm (D x L)					
Electrical Data						
Type	3201.00	3201.01	3201.02	3201.03	3201.50	3201.51
Electrical output without flow:	NPN n.o. current-carrying	NPN n.o. currentless	PNP n.c. current-carrying	PNP n.o. currentless	Thyr. n.c. current-carrying	Thyr. n.o. currentless
Operating voltage	24 VDC +10% / -15%, Ripple < 20%				115VAC or 230VAC +6% / -15%	
Switching current	Max. 500 mA				Max. 200 mA	
Starting override time	Max. 90 s					

*1 all data related to medium air

Abmessungen



connection diagram

