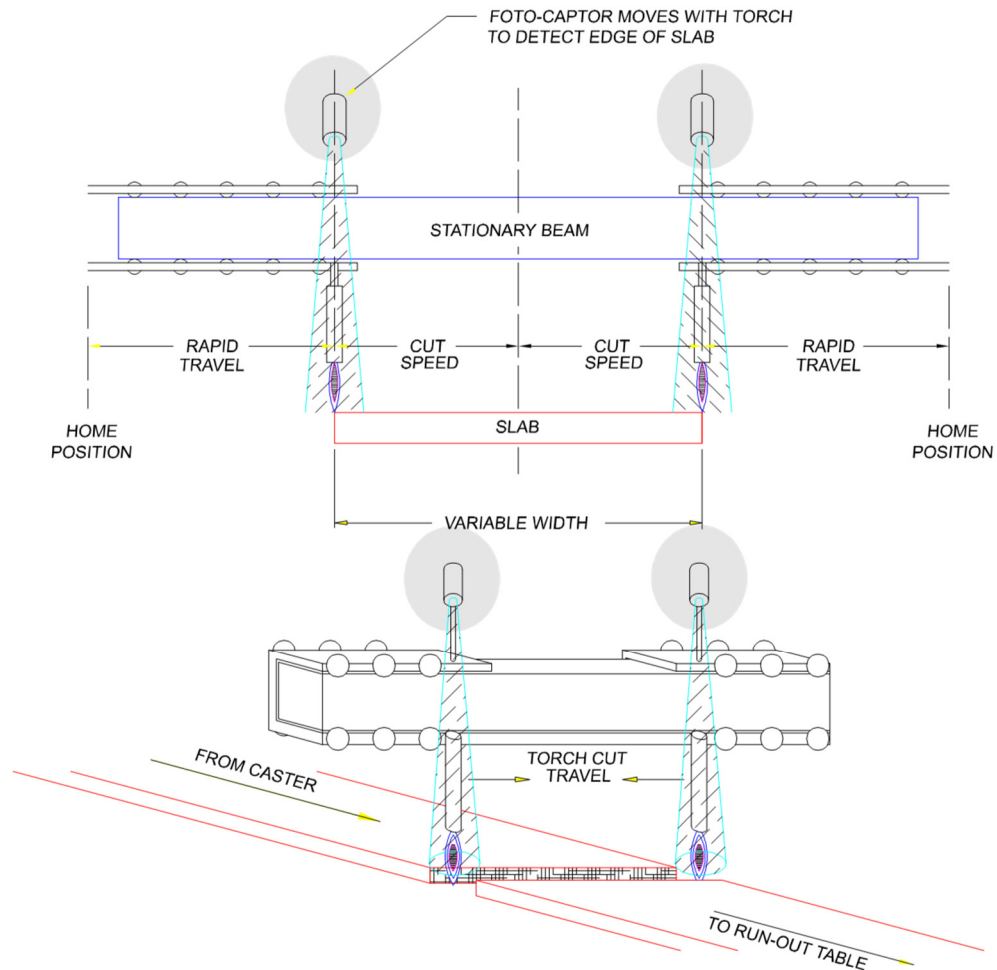


Rugged edge detection in slab cutting process

INTRODUCTION

The environmental conditions in the steel industry are a challenge for any type of control equipment. High temperatures, vibration, excessive dust and contamination are setting the limits for standard equipment. Our sensors have been designed and carefully built to meet the specific demands of the steel industry.



PROBLEM

As the torches roll out toward the slab, a means of slab edge detection is needed in order to determine the point to initiate the slab cutting process. If the cutting speed was not slowed down, the slab would not be cut, resulting in improper indexing

SOLUTION

At the end of each roller cutting torch arm a foto-captor is installed to detect the slab edge. Once the slab edge is detected, the torch arm travel slows down to cutting speed and the torch is ignited. Cutting of the slab can then proceed at a predetermined rate.

BENEFIT

Installation of the foto-captors provides the rugged edge detection for reliable performance and maximum effectiveness.