

# Optic Select

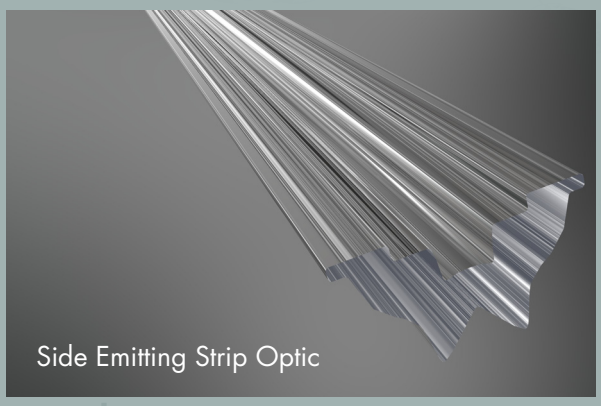
Optic Select is Carclo Optics' online tailor-made solution to help you find the perfect optic for your needs. Search for an optic compatible with your chosen LED or use criteria such as diameter or beam angle to return results including FWHM and downloadable technical information, drawings and CAD models.

The screenshot shows the Carclo Optics website with a navigation bar at the top containing links for Products, Light Engines, Media, Optic Types, Where To Buy, and Contact Us. Below the navigation bar, there are several promotional banners: 'New! Mini Hubble Optics', 'LED optical design, development and manufacture', 'Our Distribution Network', and 'Our Optic Types'. A search bar is visible with the text 'Search by part number'. The Carclo Optics logo is in the top left corner.

This screenshot shows the 'Optic Select' search filters. At the top, there is a 'Reset filters' button. Below it, a list of filter categories is shown with expandable arrows: LED manufacturer, Optic type, Optic family, Optic diameter, IP rated, Beam angle, Beam width, Beam type, and Finish. At the bottom, there is a search bar with the text 'Search by part number'.

Details include relevant holder information and you can also search by part number.

## Custom Design



Side Emitting Strip Optic



1 x 6 Array Optic

UK: +44 (0)1753 575 011  
 Europe: +49 2244 918 130  
 USA: +1 724 539 1833  
 India: +91 80 276 302 44  
 China: +86 216 9595 189 128  
[sales@carclo-optics.com](mailto:sales@carclo-optics.com)  
[www.carclo-optics.com](http://www.carclo-optics.com)

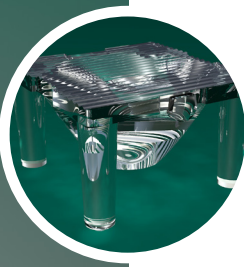
Try Optic Select for yourself at the new Carclo Optics website:

[www.carclo-optics.com/opticselect](http://www.carclo-optics.com/opticselect)

# carclo Optics

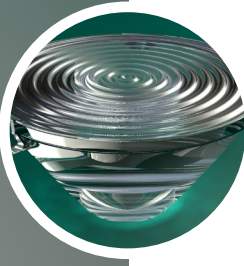
# Mini Hubble Optics

## Optics



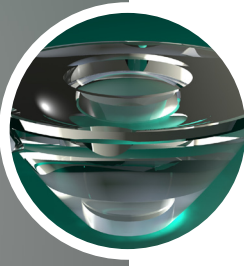
### 10mm

These are small form factor TIR optics that have been designed to support the latest small LED packages. All 10mm optics are available as singles or clusters. They are also available as a single optic IP rated design solution to allow you to utilise the optic, sealing the LED to the board.



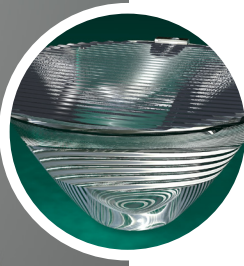
### 20mm

The most common size of TIR optic as these produce a range of beam angles from relatively tight to wide. There are also two reflectors within our 20mm range that take the beam even wider – therefore, you can design your fixture around this family of optics and select what beam is required as you build.



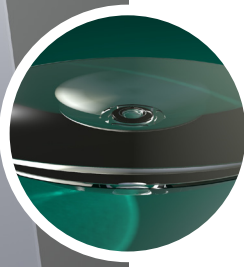
### 26.5mm

These TIR optics are used to get narrow beams with smaller LED's or allow you to use the larger source LED's and even multi chip LED's. As with the other TIR ranges, we have a number of beams to allow you to use the same size optics for a number of beam angles.



### 30mm

Designed for the larger multi chip LED's, they give a smooth beam output mixing the light and adding diffusion to the beam. There are a number of beams to allow you to use the same size optics for a number of beam angles.



### 60mm

The 60mm optics are Catadioptrics, which is a combination of TIR and reflector that enables us to compress the optic to be as thin as possible whilst getting a very narrow beam.

### Strip Optic

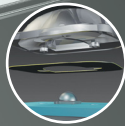
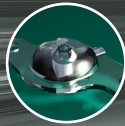
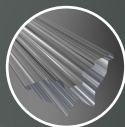
The Strip Optic is a continuous optic in a particular length (extrusion), and uses TIR-optic technology for linear lighting. A new addition to the range is the side emitter strip.

### Hybrid

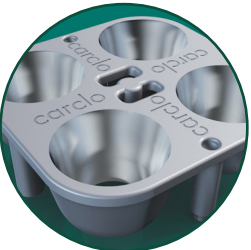
The Hybrid system can be used for streetlighting and other applications needing asymmetric beams.

### Freeform

Freeform Optics are a mixture of different optic types merged into one design to give unique, non-symmetrical illumination patterns.

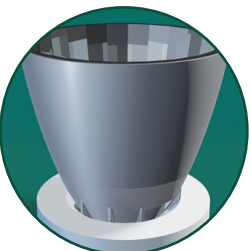


## Reflectors



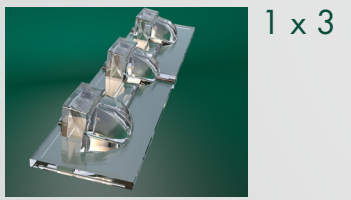
### Archimedes

This family of reflectors has been designed for use within the internal light market. The beams offer excellent even coverage with low glare. There is also an array option that can be screwed or clipped in place. Archimedes are used in high bay and low level area lighting due to the low glare offered by the reflector, providing a sharp cut off.

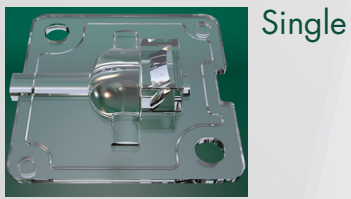


### Newton

This range of reflectors based on the Z mount from TE and our own base for use with the COB LED's up to 20mm output. We currently have 2 reflectors available that feature the wave form inner surface – which is a very efficient way to mix the light with minimum losses.



1 x 3



Single



2 x 3