

carclo

Optics

Mini Hubble 3

Technical Overview

Designed to give an asymmetric beam and throw light forward.

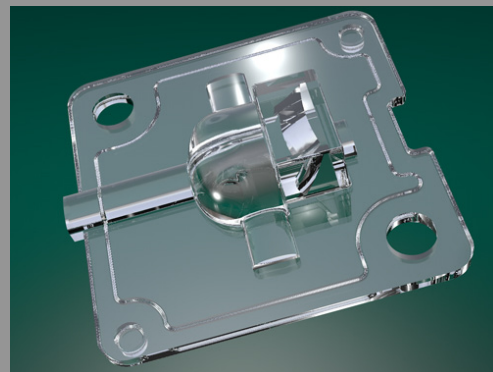
General Information with main features

- 25mm x 25mm footprint.
- 2 location pins for accurate positioning.
- M3 screw holes.
- 0.2mm recess for glue.
- Compatible with all small footprint LEDs.
- Also available as 3, 4 or 6 arrays or custom layout.

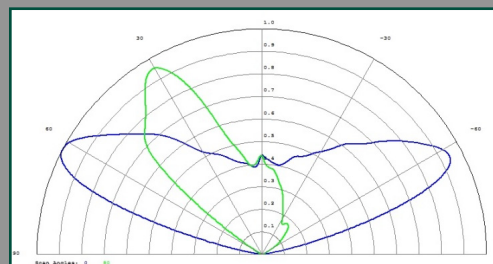
Application Data

- Roads where the width is larger than pole height and pole spacing to height ratio is 4:1.
- Type 3 medium US streetlight.
- European ME streetlight standards.
- Wall wash.
- Down lighting and interior lighting.

Available Now



Part Number 12771



Cross Section Image



Beam Type: Asymmetrical

Beam Angle: 140 x 40 x 35

Optic» Select

www.carclo-optics.com

sales@carclo-optics.com

+44 (0)1753 575 011