

# carclo

## Optics

### Mini Hubble 5

#### Technical Overview

Designed to give an even illumination across the beam with soft edges and when mounted in arrays with spacing height ratio 4.5:1

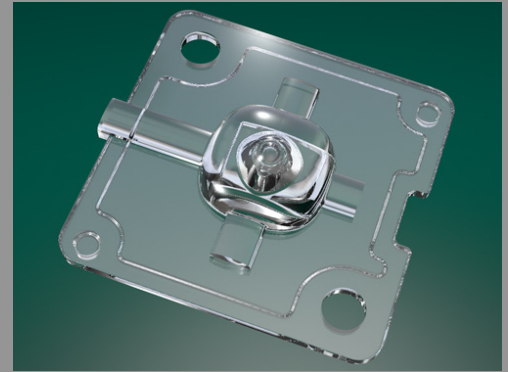
#### General Information with main features

- 25mm x 25mm footprint.
- 2 location pins for accurate positioning.
- M3 screw holes.
- 0.2mm recess for glue.
- Compatible with all small footprint LEDs.
- Also available as 3, 4 or 6 arrays or custom layout.

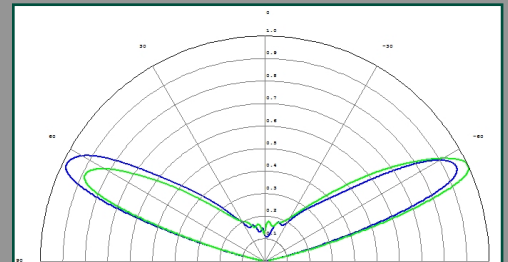
#### Application Data

- Type 5 US streetlight.
- Corridor lighting (with even illumination when mounted in arrays).
- High bay lighting (with even illumination when mounted in arrays).
- Down lighting and interior lighting.

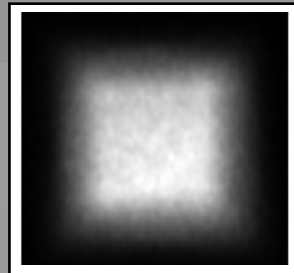
Available Now



Part Number 12779



Cross Section Image



Beam Type: Square

Beam Angle: 140 x 140 x 0

[www.carclo-optics.com](http://www.carclo-optics.com)  
[sales@carclo-optics.com](mailto:sales@carclo-optics.com)  
+44 (0)1753 575 011

# Optic Select