

# B-Series

## CIRCUIT BREAKER

Carling Technologies' B-Series hydraulic magnetic circuit breakers are specifically designed for applications requiring extra insulation and tongue and groove half-shell constructions. The B-Series carries global regulatory safety approvals for spacing requirements and are ideal for use as general purpose as well as full load amp applications. Available with various choices of time delays, terminals, actuator styles, with a wide range of standard colors and imprinting.

1-6 poles; ratings from 0.02 to 50 amps, up to 277VAC or 80VDC; UL recognized, CSA, VDE -0642, TUV, UL-1500, UL489A Listed



### Product Highlights:

- ♦ Meet CSA Standard 22.2 No. 100 for the Generator & Welder markets
- ♦ Extra insulation and tongue & groove half-shell constructions
- ♦ UL Recognized - UL Standard 508, 1077, 1500
- ♦ UL Listed - UL Standard 489, 489A
- ♦ CSA Accepted
- ♦ TUV Certified
- ♦ VDE Certified

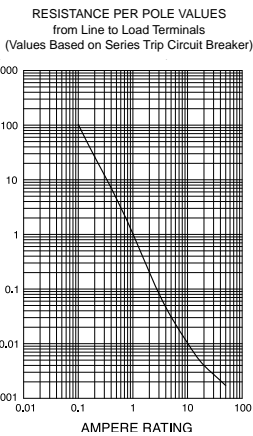
### Typical Applications:

- ♦ Power Supplies
- ♦ Medical Equipment
- ♦ Generators & Welders
- ♦ Office Equipment
- ♦ Control Panels
- ♦ Marine
- ♦ Military



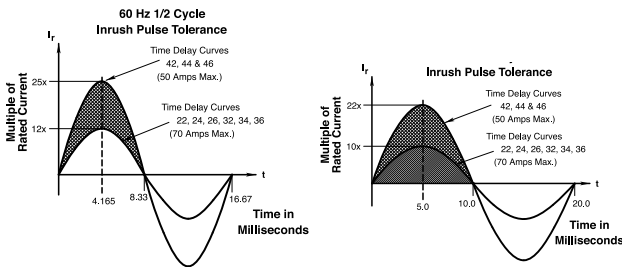
### Electrical

Maximum Voltage 277VAC 50/60 Hz, 80VDC  
 Current Ratings Standard current coils: 0.100, 0.250, 0.500, 0.750, 1.00, 2.50, 5.00, 7.50, 10.0, 15.0, 20.0, 25.0, 30.0, 35.0, 40.0 and 50.0 amps. Other ratings available, see ordering scheme.  
 Standard Voltage Coils DC - 6V, 12V; AC - 120V, other ratings available, see ordering scheme.  
 Auxiliary Switch Rating SPDT; 10.1 AMPS - 250VAC, 1.0A 65 VDC or 0.5A 80 VDC, 0.1 Amps - 125VAC (with gold contacts). VDE-1.0 Amp - 125VAC.  
 Insulation Resistance Minimum of 100 Megohms at 500 VDC.  
 Dielectric Strength UL, CSA-1500 V 50/60 Hz for one minute between all electrically isolated terminals. B-Series circuit breakers comply with the 8mm spacing and 3750V 50/60 Hz dielectric requirements from hazardous voltage to operator accessible surfaces, between adjacent poles and from main circuits to auxiliary circuits per Publications EN 60950 and VDE 0805.  
 Resistance, Impedance Values from Line to Load Terminal - based on Series Trip Circuit Breaker.



CURRENT (AMPS)	TOLERANCE (%)
0.10 - 5.0	15
5.1 - 20.0	25
20.1 - 50.0	35

### Pulse Tolerance Curves



\*Manufacturer reserves the right to change product specification without prior notice.

### Mechanical

Endurance 10,000 ON-OFF operations @ 6 per minute; with rated Current and Voltage.  
 Trip Free All B-Series Circuit Breakers will trip on overload, even when Handle is forcibly held in the ON position.  
 Trip Indication The operating Handle moves positively to the OFF position when an overload causes the breaker to trip.

### Physical

Number of Poles 1 - 6 poles at 30 Amps or less. 1 and 2 poles at 31 Amps thru 50 Amps.  
 Internal Circuit Config. Series, (with or without auxiliary switch), Shunt and Relay with current or voltage trip coils, Dual Coil, Switch Only (with or without auxiliary switch).  
 Weight Approximately 65 grams/pole. (Approximately 2.32 ounces/pole.)  
 Standard Colors Housing- Black; Actuator - See Ordering Scheme.

### Environmental

Designed and tested in accordance with requirements of specification MIL-PRF-55629 & MIL-STD-202 as follows:  
 Shock Withstands 100 Gs, 6ms, sawtooth while carrying rated current per Method 213, Test Condition "I". Instantaneous and ultra-short curves tested @ 90% of rated current.  
 Vibration Withstands 0.060" excursion from 10-55 Hz, and 10 Gs 55-500 Hz, at rated current per Method 204C, Test Condition A. Instantaneous and ultrashort curves tested at 90% of rated current.  
 Moisture Resistance Method 106D, i.e., ten 24-hour cycles @ + 25°C to +65°C, 80-98% RH.  
 Salt Spray Method 101, Condition A (90-95% RH @ 5% NaCl Solution, 96 hrs).  
 Thermal Shock Method 107D, Condition A (Five cycles @ -55°C to +25°C to +85°C to +25°C).  
 Operating Temperature -40° C to +85° C

## Electrical Tables

**Table A:** Lists UL Recognized & CSA Certified configurations and performance capabilities as a Component Supplementary Protector.

B-SERIES TABLE A: COMPONENT SUPPLEMENTARY PROTECTORS										
CIRCUIT CONFIGURATION	VOLTAGE			CURRENT RATING		SHORT CIRCUIT CAPACITY (AMPS)		APPLICATION CODES		CONSTRUCTION NOTES
	MAX. RATING	FREQUENCY	PHASE	FULL LOAD AMPS	GENERAL PURPOSE AMPS	UL/CSA		UL	CSA	
						WITH BACKUP FUSE	WITHOUT BACKUP FUSE			
SERIES	65	DC	--	31 - 50	--	--	7500	TC1,2, OL1,U1	TC1,2, OL1,U1	
	80	DC	--	0.02 - 30	--	--	7500	TC1,2, OL1,U1	TC1,2, OL1,U1	
				---	31 - 50	--	7500	TC1,2, OL0,U1	TC1,2, OL0,U1	
	125	50 / 60	1	1 - 50	--	--	2000	TC1, OL1,U2	TC1, OL1,U2	
	125	50 / 60	1 <sup>4</sup>	1 - 50	--	--	1000	TC1, OL1,U2	TC3, OL1,U3	
	125 / 250	50 / 60	1 <sup>3</sup>	0.02 - 30	--	--	3000	TC1,2, OL1,U1	TC1,2, OL1,U1	
	250	50 / 60	1	0.02 - 30	--	--	1500	TC1, OL0,U2	TC1, OL0,U2	Single Pole Break
				0.02 - 30	--	--	3000	TC1, OL1,U2	TC1, OL1,U2	Two Pole Break
				---	31 - 50	--	3000	TC1,2, OL0,U1	TC1,2, OL0,U1	
				1 <sup>4</sup>	1 - 50	--	1000	TC1, OL1,U2	TC3, OL1,U3	
3	0.02 - 30	--	5000 <sup>2</sup>	--	TC1,2, OL1,C1	TC1,2, OL1,C1				
31 - 50	--	2000 <sup>1</sup>	--	TC1,2, OL1,C1	TC1,2, OL1,C1					
277	50 / 60	1	0.02 - 30	--	5000 <sup>1</sup>	--	TC1,2, OL1,C1	TC1,2, OL1,C1		
DUAL COIL	65	DC	--	0.02 - 50	--	--	7500	TC1,2, OL1,U1	TC1,2, OL1,U1	
	80	DC	--	0.02 - 30	--	--	7500	TC1,2, OL1,U1	TC1,2, OL1,U1	
				---	31 - 50	--	7500	TC1,2, OL0,U1	TC1,2, OL0,U1	
	125	50 / 60	1	1 - 50	--	--	2000	TC1, OL1,U2	TC1, OL1,U2	
	125 / 250	50 / 60	1 <sup>3</sup>	0.02 - 30	--	--	3000	TC1,2, OL1,U1	TC1,2, OL1,U1	
	250	50 / 60	1	0.02 - 30	--	--	1500	TC1, OL0,U2	TC1, OL0,U2	Single Pole Break
				0.02 - 30	--	--	3000	TC1, OL1,U2	TC1, OL1,U2	Two Pole Break
				---	31 - 50	--	3000	TC1,2, OL0,U1	TC1,2, OL0,U1	
				1 <sup>4</sup>	1 - 50	--	1000	TC1, OL1,U2	TC3, OL1,U3	
	3	0.02 - 30	--	5000 <sup>2</sup>	--	TC1,2, OL1,C1	TC1,2, OL1,C1			
31 - 50	--	2000 <sup>1</sup>	--	TC1,2, OL1,C1	TC1,2, OL1,C1					
277	50 / 60	1	0.02 - 30	--	5000 <sup>1</sup>	--	TC1,2, OL1,U1	TC1,2, OL1,U1		
SHUNT	80	DC	--	0.02 - 30	--	--	7500	TC1,2, OL1,U1	TC1,2, OL1,U1	
	125 / 250	50 / 60	1 <sup>3</sup>	0.02 - 30	--	--	3000	TC1,2, OL1,U1	TC1,2, OL1,U1	
				---	31 - 50	--	3000	TC1,2, OL1,U1	TC1,2, OL1,U1	
	250	50 / 60	3	0.02 - 30	--	5000 <sup>2</sup>	--	TC1,2, OL1,C1	TC1,2, OL1,C1	
				31 - 50	--	2000 <sup>1</sup>	--	TC1,2, OL1,C1	TC1,2, OL1,C1	
277	50 / 60	1	0.02 - 30	--	5000 <sup>1</sup>	--	TC1,2, OL1,C1	TC1,2, OL1,C1		
RELAY	80	DC	--	0.02 - 30	--	--	7500	TC1,2, OL1,U1	TC1,2, OL1,U1	
	125 / 250	50 / 60	1 <sup>3</sup>	0.02 - 30	--	--	3000	TC1,2, OL1,U1	TC1,2, OL1,U1	
				---	31 - 50	--	3000	TC1,2, OL1,U1	TC1,2, OL1,U1	
	250	50 / 60	3	0.02 - 30	--	5000 <sup>2</sup>	--	TC1,2, OL1,C1	TC1,2, OL1,C1	
31 - 50				--	2000 <sup>1</sup>	--	TC1,2, OL1,C1	TC1,2, OL1,C1		
SWITCH ONLY	65	DC	--	0.02 - 50	--	--	--	--	--	
	80	DC	--	0.02 - 30	--	--	--	--	--	
				---	31 - 50	--	--	--	--	
	250	50 / 60	1	---	31 - 50	--	--	--	--	
3				0.02 - 50	--	--	--	--		
277	50 / 60	1	0.02 - 30	31 - 50	--	--	--	--		

Notes:

- 1 Requires branch circuit backup with a UL LISTED Type K5 or RK5 fuse (15A minimum) at no more than 4 times the rating of the protector.
- 2 Same as note 1, except that backup fuse is limited to 80A maximum.
- 3 2 pole protector required (with one pole per power line) for: 250/125 VAC, 125/250 VAC and 208Y/120 VAC Power Systems. 1 pole protector required for: 125 VAC, 1Ø Power System.
- 4 Satisfies the requirements of clause 11.2.8.2.5 of CSA STD C22.2 No 100 for the use of supplementary protectors with portable generators.

### Electrical Tables

**Table B:** Lists UL Recognized, CSA, VDE & TUV Certified configurations & performance capabilities as a Component Supplementary Protector.

B-SERIES TABLE B: COMPONENT SUPPLEMENTARY PROTECTORS																	
CIRCUIT CONFIGURATION	VOLTAGE			CURRENT RATING		SHORT CIRCUIT CAPACITY (AMPS)						APPLICATION CODES		CONSTRUCTION NOTES			
	MAX. RATING	FREQUENCY	PHASE	FULL LOAD AMPS	GENERAL PURPOSE AMPS <sup>1</sup>	UL/CSA		VDE		TUV		UL	CSA				
						WITH BACKUP FUSE	WITHOUT BACKUP FUSE	(Inc) WITH BACKUP FUSE	(Inc) WITHOUT BACKUP FUSE	(Inc) WITH BACKUP FUSE	(Inc) WITHOUT BACKUP FUSE						
SERIES	80	DC	---	0.10 - 30	—	—	7500	3000	1500	3000	1500	TC1,2, OL1,U1	TC1,2, OL1,U1				
				31 - 50	31 - 50	—	7500	3000	1500	3000	1500	TC1,2, OL0,U1	TC1,2, OL0,U1				
				0.10 - 30	—	—	7500	3000	1500	3000	1500	TC1,2, OL1,U1	TC1,2, OL1,U1				
				31 - 32	—	—	7500	3000	1500	3000	1500	TC1,2, OL1,U1	TC1,2, OL1,U1				
	250	50 / 60	1	0.10 - 30	—	—	3000	3000	1500	3000	1500	TC1,2, OL0,U1	TC1,2, OL0,U1				
				31 - 50	31 - 50	—	3000	—	—	5000	1500	TC1,2, OL0,U1	TC1,2, OL0,U1				
				31 - 32	—	—	3000	6000	1500	5000	1500	TC1,2, OL1,U1	TC1,2, OL1,U1				
				0.10 - 30	—	—	1500	3000	1500	5000	1500	TC1, OL0,U2	TC1, OL0,U2	Single Pole Break			
				0.10 - 30	—	—	3000	3000	1500	5000	1500	TC1, OL1,U2	TC1, OL1,U2	Two Pole Break			
				0.10 - 30	—	—	5000 <sup>3</sup>	—	3000	1500	3000	1500	TC1,2, OL1,C1	TC1,2, OL1,C1			
				415	50 / 60	3	0.10 - 30	—	—	1000	3000	1500	3000	1500	TC1,2, OL1,C1	TC1,2, OL1,C1	
				DUAL COIL	80	DC	---	0.10 - 30	—	—	7500	3000	1500	3000	1500	TC1,2, OL1,U1	TC1,2, OL1,U1
0.10 - 30	—	—	3000					3000	1500	5000	1500	TC1,2, OL1,U1	TC1,2, OL1,U1				
30 - 50	31 - 50	—	3000					—	—	5000	1500	TC1,2, OL0,U1	TC1,2, OL0,U1				
0.10 - 30	—	—	5000 <sup>3</sup>					—	3000	1500	3000	1500	TC1,2, OL1,C1	TC1,2, OL1,C1			
SHUNT	80	DC	---	0.10 - 30	—	—	7500	3000	1500	3000	1500	TC1,2, OL1,U1	TC1,2, OL1,U1				
				0.10 - 30	—	—	7500	3000	1500	3000	1500	TC1,2, OL1,U1	TC1,2, OL1,U1				
	250	50 / 60	1	0.10 - 30	—	—	3000	3000	1500	5000	1500	TC1,2, OL1,U1	TC1,2, OL1,U1				
				30 - 50	31 - 50	—	3000	—	—	5000	1500	TC1,2, OL0,U1	TC1,2, OL0,U1				
				0.10 - 30	—	—	5000 <sup>3</sup>	—	3000	1500	3000	1500	TC1,2, OL1,C1	TC1,2, OL1,C1			
				31 - 50	—	—	2000 <sup>2</sup>	—	—	3000	1500	TC1,2, OL1,C1	TC1,2, OL1,C1				

Notes:  
 1 General Purpose Ratings for UL/CSA Only.  
 2 Requires branch circuit backup with a UL LISTED Type K5 or RK5 fuse (15A minimum) at no more than 4 times the rating of the protector.  
 3 Same as note 1, except that backup fuse is limited to 80 A maximum.

**Table C:** Lists UL Recognized, CSA Certified configurations and performance capabilities as Protectors, Supplementary for Marine Electrical and Fuel Systems (CCN/Guide PEQZ2, File E75596). Ignition Protected per UL 1500. UL Classified Small Craft Electrical Devices, Marine in accordance with ISO 8846 (CCN/Guide UZMK, File MQ1515) as Marine Supplementary Protectors.

B-SERIES TABLE C: UL1500 (Marine Ignition Protected)							
CIRCUIT CONFIGURATION	VOLTAGE			CURRENT RATING	SHORT CIRCUIT CAPACITY (AMPS)	APPLICATION CODES	
	MAX. RATING	FREQUENCY	PHASE			UL	CSA
SERIES	14 <sup>1</sup>	DC	—	0.02 - 50	5000	TC1,2,OL1,U1	TC1,2,OL1,U1
	32 <sup>1</sup>	DC	—	0.02 - 50	5000	TC1,2,OL1,U2	TC1,2,OL1,U2
	65	DC	—	0.02 - 50	3000	TC1,2,OL1,U1	TC1,2,OL1,U1
	125 / 250	50 / 60	1 <sup>2</sup>	0.02 - 50	1500	TC1,2,OL1,U1	TC1,2,OL1,U1
	250	50 / 60	1	0.02 - 30	1000	TC1,2,OL1,U1	TC1,2,OL1,U1

Notes:  
 1 Available with special catalog number only (consult factory).  
 2 2 pole protector required (with one pole per power line) for: 250/125 VAC, 125/250 VAC and 208Y/120 VAC Power Systems. 1 pole protector required for: 125 VAC, 1Ø Power System.

**Table D:** Lists UL Listed configurations and performance capabilities as Circuit Breakers for use in Communications Equipment (CCN/ Guide DITT, File E189195), under UL489A

B-SERIES TABLE D: UL489A (COMMUNICATIONS EQUIPMENT)				
CIRCUIT CONFIGURATION	VOLTAGE		CURRENT RATING	INTERRUPTING CAPACITY (AMPS)
	MAX. RATING	FREQUENCY	GENERAL PURPOSE AMPS	WITHOUT BACKUP FUSE
SERIES	80	DC	0.10 - 50	5000
	80	DC	60 - 90 <sup>1</sup>	5000

Notes:  
<sup>1</sup> Parallel Pole Construction

**Table E:** Lists UL Listed (489) configuration and performance capabilities as a Molded Case Circuit Breaker.

B SERIES TABLE E : UL489 LISTED BRANCH CIRCUIT BREAKERS						
CIRCUIT CONFIGURATION	VOLTAGE			CURRENT RATING	INTERRUPTING CAPACITY (AMPS)	CONSTRUCTION NOTES
	MAX. RATING	FREQUENCY	PHASE	FULL LOAD AMPS	WITHOUT BACKUP FUSE	
SERIES	120	50 / 60	1	0.10 - 30	5,000	1 Pole
	120 / 240	50 / 60	1	0.10 - 30	5,000	2 Poles
	120 / 240	50 / 60	1	0.10 - 30	5,000	2 or 3 Poles (1 Pole of a 3 Pole Unit is for Neutral Break)
SHUNT TRIP DUAL COIL	120	50 / 60	1	0.10 - 30	5,000	1 Pole
	120 / 240	50 / 60	1	0.10 - 30	5,000	2 Poles
	120 / 240	50 / 60	1	0.10 - 30	5,000	2 or 3 Poles (1 Pole of a 3 Pole Unit is for Neutral Break)

## Agency Certifications

### UL Recognized

UL Standard 1077



Component Recognition Program as Protectors Supplementary (Guide CCN/QVNU2, File E75596)

### CSA Accepted



Component Supplementary Protector under Class 3215 30, File 047848 0 000 CSA Standard C22.2 No. 235

UL Standard 508



Switches, Industrial Control (Guide CCN/NRNT2, File E148683)

### TUV Certified



EN60934, under License No. R72103448

UL Standard 1500



Protectors, Supplementary for Marine Electrical & Fuel Systems (Guide PEQZ2, File E75596) Ignition Protection

### VDE Certified



EN60934, VDE 0642 under File No. 10537

### UL Listed

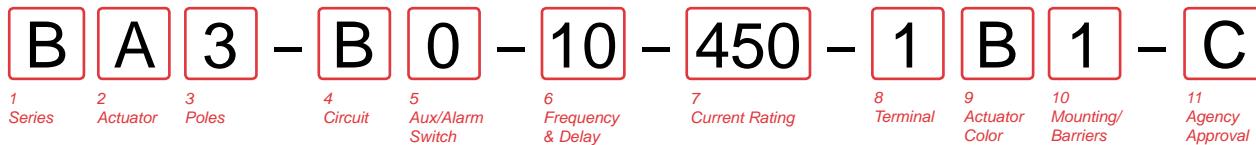
UL Standard 489



Circuit Breakers, Molded Case, (Guide DIVQ, File E129899)

UL Standard 489A

Communications Equipment (Guide CCN/DITT, File E189195)



**1 SERIES**  
**B**

**2 ACTUATOR**

- A** Handle, one per pole
- B** Handle, one per multipole unit
- S** Mid-Trip Handle, one per pole
- T** Mid-Trip Handle, one per pole & Alarm Switch

**3 POLES**

- |              |                |               |
|--------------|----------------|---------------|
| <b>1</b> One | <b>3</b> Three | <b>5</b> Five |
| <b>2</b> Two | <b>4</b> Four  | <b>6</b> Six  |

**4 CIRCUIT**

- |                                             |                                                                |
|---------------------------------------------|----------------------------------------------------------------|
| <b>A</b> <sup>2</sup> Switch Only (No Coil) | <b>G</b> <sup>3</sup> Relay Trip (Voltage)                     |
| <b>B</b> Series Trip (Current)              | <b>H</b> <sup>3,4</sup> Dual Coil with Shunt Trip Voltage Coil |
| <b>C</b> Series Trip (Voltage)              | <b>K</b> <sup>3,4</sup> Dual Coil with Relay Trip Voltage Coil |
| <b>D</b> <sup>3</sup> Shunt Trip (Current)  |                                                                |
| <b>E</b> <sup>3</sup> Shunt Trip (Voltage)  |                                                                |
| <b>F</b> <sup>3</sup> Relay Trip (Current)  |                                                                |

**5 AUXILIARY / ALARM SWITCH**<sup>5</sup>

- |                                                     |                                                     |
|-----------------------------------------------------|-----------------------------------------------------|
| <b>0</b> without Aux Switch                         | <b>5</b> S.P.S.T., 0.093 Q.C. Term. (Gold Contacts) |
| <b>1</b> S.P.D.T., 0.093 Q.C. Term.                 | <b>7</b> S.P.S.T., 0.110 Q.C. Term. (Gold Contacts) |
| <b>2</b> S.P.D.T., 0.110 Q.C. Term.                 | <b>8</b> S.P.S.T., 0.187 Q.C. Term. (Gold Contacts) |
| <b>4</b> S.P.D.T., 0.110 Q.C. Term. (Gold Contacts) | <b>9</b> S.P.D.T., 0.187 Q.C. Term.                 |

**6 FREQUENCY & DELAY**

- |                                                |                                                  |
|------------------------------------------------|--------------------------------------------------|
| <b>03</b> <sup>2</sup> DC 50/60Hz, Switch Only | <b>30</b> DC, 50/60Hz Instantaneous              |
| <b>10</b> <sup>6</sup> DC Instantaneous        | <b>31</b> DC, 50/60Hz Ultra Short                |
| <b>11</b> DC Ultra Short                       | <b>32</b> DC, 50/60Hz Short                      |
| <b>12</b> DC Short                             | <b>34</b> DC, 50/60Hz Medium                     |
| <b>14</b> DC Medium                            | <b>36</b> DC, 50/60Hz Long                       |
| <b>16</b> DC Long                              | <b>42</b> <sup>7</sup> 50/60Hz Short, Hi-Inrush  |
| <b>20</b> <sup>6</sup> 50/60Hz Instantaneous   | <b>44</b> <sup>7</sup> 50/60Hz Medium, Hi-Inrush |
| <b>21</b> 50/60Hz Ultra Short                  | <b>46</b> <sup>7</sup> 50/60Hz Long, Hi-Inrush   |
| <b>22</b> 50/60Hz Short                        | <b>52</b> <sup>7</sup> DC, Short, Hi-Inrush      |
| <b>24</b> 50/60Hz Medium                       | <b>54</b> <sup>7</sup> DC, Medium, Hi-Inrush     |
| <b>26</b> 50/60Hz Long                         | <b>56</b> <sup>7</sup> DC, Long, Hi-Inrush       |

**7 CURRENT RATING (AMPERES)**

CODE	AMPERES				
<b>020</b>	0.020	<b>225</b>	0.250	<b>420</b>	2.000
<b>025</b>	0.025	<b>230</b>	0.300	<b>522</b>	2.250
<b>030</b>	0.030	<b>235</b>	0.350	<b>527</b>	2.750
<b>035</b>	0.035	<b>240</b>	0.400	<b>430</b>	3.000
<b>040</b>	0.040	<b>245</b>	0.450	<b>435</b>	3.500
<b>045</b>	0.045	<b>250</b>	0.500	<b>440</b>	4.000
<b>050</b>	0.050	<b>255</b>	0.550	<b>445</b>	4.500
<b>055</b>	0.055	<b>260</b>	0.600	<b>450</b>	5.000
<b>060</b>	0.060	<b>265</b>	0.650	<b>455</b>	5.500
<b>065</b>	0.065	<b>270</b>	0.700	<b>460</b>	6.000
<b>070</b>	0.070	<b>275</b>	0.750	<b>465</b>	6.500
<b>075</b>	0.075	<b>280</b>	0.800	<b>470</b>	7.000
<b>080</b>	0.080	<b>285</b>	0.850	<b>475</b>	7.500
<b>085</b>	0.085	<b>290</b>	0.900	<b>480</b>	8.000
<b>090</b>	0.090	<b>295</b>	0.950	<b>485</b>	8.500
<b>095</b>	0.095	<b>410</b>	1.000	<b>490</b>	9.000
<b>210</b>	0.100	<b>512</b>	1.250	<b>495</b>	9.500
<b>215</b>	0.150	<b>415</b>	1.500	<b>610</b>	10.000
<b>220</b>	0.200	<b>517</b>	1.750	<b>710</b>	10.500

**OR VOLTAGE COIL (NORMAL RATED VOLTAGE)**<sup>6</sup>

CODE	AMPERES				
<b>A06</b>	6 DC	<b>A32</b>	32 DC	<b>J12</b>	12 AC
<b>A12</b>	12 DC	<b>A48</b>	48 DC	<b>J18</b>	18 AC
<b>A18</b>	18 DC	<b>A65</b>	65 DC	<b>J24</b>	24 AC
<b>A24</b>	24 DC	<b>J06</b>	6 AC	<b>J48</b>	48 AC
				<b>J65</b>	65 AC
				<b>K20</b>	120 AC
				<b>L40</b>	240 AC

**8 TERMINAL**<sup>9</sup>

- |                                                    |                                                            |
|----------------------------------------------------|------------------------------------------------------------|
| <b>1</b> <sup>10</sup> Push-On 0.250 Tab (Q.C.)    | <b>F</b> Screw M5 with upturned lugs & 30° bend            |
| <b>2</b> Screw 8-32 with upturned lugs             | <b>G</b> Screw M5 (Bus Type) & 30° bend                    |
| <b>3</b> <sup>11</sup> Screw 8-32 (Bus Type)       | <b>H</b> Screw M5 (Bus Type)                               |
| <b>4</b> Screw 10-32 with upturned lugs            | <b>J</b> Screw M5 Back Connect                             |
| <b>5</b> <sup>11</sup> Screw 10-32 (Bus Type)      | <b>K</b> Screw 10-32 Back Connect                          |
| <b>6</b> Screw 8-32 with upturned lugs & 30° bend  | <b>L</b> <sup>12</sup> 0.250 Q.C./ Solder Lug              |
| <b>7</b> Screw 8-32 (Bus Type) & 30° bend          | <b>M</b> <sup>11</sup> M6 Threaded Stud                    |
| <b>8</b> Screw 10-32 with upturned lugs & 30° bend | <b>N</b> Screw M4 Back Connect                             |
| <b>9</b> Screw 10-32 (Bus Type) & 30° bend         | <b>P</b> <sup>13</sup> Printed Circuit Board Terminals     |
| <b>B</b> Screw M5 with upturned lugs               | <b>Q</b> <sup>16</sup> Push-In Stud                        |
| <b>C</b> Screw M4 with upturned lugs               | <b>R</b> Screw M4 with upturned lugs & 30° bend            |
| <b>E</b> <sup>11</sup> Screw M4 (Bus Type)         | <b>S</b> <sup>15</sup> Push-On 0.110 Tab (Q.C.) & 30° bend |
|                                                    | <b>T</b> Screw M4 (Bus Type) & 30° bend                    |
|                                                    | <b>Y</b> Screw 8-32 Back Connect                           |

**9 ACTUATOR COLOR & LEGEND**

Actuator Color	I-O	ON-OFF	Dual	Legend Color
White	<b>A</b>	<b>B</b>	<b>1</b>	Black
Black	<b>C</b>	<b>D</b>	<b>2</b>	White
Red	<b>F</b>	<b>G</b>	<b>3</b>	White
Green	<b>H</b>	<b>J</b>	<b>4</b>	White
Blue	<b>K</b>	<b>L</b>	<b>5</b>	White
Yellow	<b>M</b>	<b>N</b>	<b>6</b>	Black
Gray	<b>P</b>	<b>Q</b>	<b>7</b>	Black
Orange	<b>R</b>	<b>S</b>	<b>8</b>	Black

**10 MOUNTING / BARRIERS**

MOUNTING STYLE	BARRIERS
<b>Threaded Insert, 2 per pole</b>	
<b>1</b> 6-32 x 0.195 inches	no
<b>A</b> 6-32 x 0.195 inches ( <i>multi-pole units only</i> )	yes
<b>2</b> ISO M3 x 5mm	no
<b>B</b> ISO M3 x 5mm	yes
<b>Rectangular Adapter Plate with mounting centers of 2.062 inches [52.37mm] and Threaded insert, 2 per pole</b>	
<b>3</b> <sup>14</sup> 6-32 x 0.225 inches	no
<b>C</b> <sup>14</sup> 6-32 X 0.225 inches ( <i>multi-pole units only</i> )	yes
<b>4</b> <sup>14</sup> ISO M3 x 6.5mm	no
<b>D</b> <sup>14</sup> ISO M3 x 6.5mm	yes
<b>Front panel Snap-In, 0.75" [19.05mm] wide bezel</b>	
<b>5</b> without Handleguard	no
<b>6</b> without Handleguard (multipole only)	yes
<b>Front panel Snap-In, 0.96" wide bezel</b>	
<b>7</b> without Handleguard, 1-pole 0.96" wide;	no
<b>8</b> multipole units have .105" bezel overhang on all sides without Handleguard, 1-pole 0.96" wide;	yes
(multipole only) .105" bezel overhang on all sides	

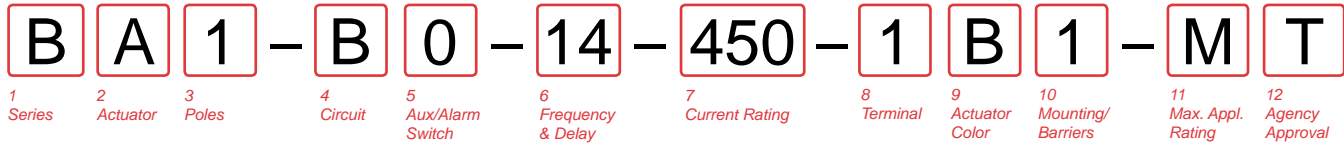
**11 AGENCY APPROVAL**

- C** UL Recognized & CSA Accepted
- D** VDE Certified, UL Recognized & CSA Accepted
- E** TUV Certified, UL Recognized & CSA Accepted
- I** UL Recognized STD 1077, UL Recognized 1500 (ignition protected), & CSA Accepted

Notes:

- 1 Actuator Code:  
A: Handle tie pin spacer(s) and retainers provided unassembled with multi-pole units.  
B: Handle location as viewed from front of breaker:  
2 pole - left pole  
4 pole - two handles at center poles  
6 pole - four handles at center poles  
3 pole - center pole  
5 pole - three handles at center poles  
S: Handle moves to mid-position only upon electrical trip of the breaker. Available with circuit codes B, C, D, E, F, G, H and K.  
T: Handle moves to mid-position and alarm switch activates only upon electrical trip of the breaker. Available with circuit codes B & C.
- 2 Switch Only circuits, rated up to 50 amps and 6 poles, and only available with VDE Certification when tied to a protected pole (Circuit Code B, C, D or H.). For .02 to 30 amps, select Current Code 630. For 35 - 50 amps, select Current Code 650.
- 3 Available with Terminal Codes 1, 2 and 3. Current Rating limited to 30 amps maximum.
- 4 Consult factory for available Dual Coil options, as special catalog number is required. With Shunt construction, Dual Coils will trip instantaneously on line voltage. Dual coils require 30VA minimum power to trip and are rated for intermittent duty only.
- 5 Auxiliary Switch breakers with Series Trip and Switch Only circuits. On multi-pole breakers, one auxiliary switch is supplied, mounted in the extreme right pole.
- 6 Separate pole type voltage coils not rated for continuous duty. Available only with delay codes 10 and 20.
- 7 Available with Circuit Codes B & D only. VDE Certified to 30 amps. UL Recognized and CSA Accepted to 50 amps.
- 8 VDE Certification available with single pole breakers with DC Delay only. UL Recognition and CSA Accepted available in one and two pole breakers.
- 9 Screw Terminals are recommended on ratings greater than 20 amps. Ratings over 30 amps are only available with Terminal Codes 5, 9, G, H, J, K, M and Q.
- 10 VDE Certification up to 25 amps and UL Recognition and CSA Acceptance up to 30 amps, but not recommended over 20 amps.
- 11 Terminal Codes 3, 5 E and H (Bus Type) with VDE, are supplied with Lock Washers, and Terminal Code M (M6 Threaded Stud) with VDE is supplied with Lock and Flat Washers. These breakers are only VDE Certified when the washers are used.
- 12 VDE Cert. available up to 12 amps. UL Rec. & CSA Acceptance available up to 30 amps.
- 13 Single pole breakers with Terminal Code P (Printed Circuit Board) are available up to 30 amps with VDE Certification and 50 amps with UL Recognition and CSA Acceptance, with Circuit Codes A, B and C. Two pole breakers with Terminal Code P (Printed Circuit Board) are available up to 40 amps with UL Recognition and CSA Acceptance with Circuit Codes A, B and C.
- 14 Available with Actuator Codes A, S and T.
- 15 Available with voltage coils only.
- 16 Terminal Code Q not available with VDE approvals.





**1 SERIES**  
**B**

**2 ACTUATOR <sup>1</sup>**

**A** Handle, one per pole  
**B** Handle, one per multipole unit  
**S** Mid-Trip Handle, one per pole  
**T** Mid-Trip Handle, one per pole & Alarm Switch

**3 POLES <sup>2</sup>**

**1** One                                                 **3** Three  
**2** Two                                                 **4** Four

**4 CIRCUIT**

**B** Series Trip (Current)

**5 AUXILIARY / ALARM SWITCH <sup>2</sup>**

**0** without Aux Switch                         **7** S.P.S.T., 0.110 Q.C. Term.  
**1** S.P.D.T., 0.093 Q.C. Term. (Gold Contacts)  
**2** S.P.D.T., 0.110 Q.C. Term.                 **8** S.P.S.T., 0.187 Q.C. Term.  
**3** S.P.D.T., 0.110 Solder Lug                 **9** S.P.D.T., 0.187 Q.C. Term.

**6 FREQUENCY & DELAY <sup>4</sup>**

**11** DC Ultra Short                                 **52** DC, Short, Hi-Inrush  
**12** DC Short                                         **54** DC, Medium, Hi-Inrush  
**14** DC Medium                                     **56** DC, Long, Hi-Inrush  
**16** DC Long

**7 CURRENT RATING (AMPERES)**

CODE	AMPERES						
<b>210</b>	0.100	<b>285</b>	0.850	<b>455</b>	5.500	<b>613</b>	13.000
<b>215</b>	0.150	<b>290</b>	0.900	<b>460</b>	6.000	<b>614</b>	14.000
<b>220</b>	0.200	<b>295</b>	0.950	<b>465</b>	6.500	<b>615</b>	15.000
<b>225</b>	0.250	<b>410</b>	1.000	<b>470</b>	7.000	<b>616</b>	16.000
<b>230</b>	0.300	<b>512</b>	1.250	<b>475</b>	7.500	<b>617</b>	17.000
<b>235</b>	0.350	<b>415</b>	1.500	<b>480</b>	8.000	<b>618</b>	18.000
<b>240</b>	0.400	<b>517</b>	1.750	<b>485</b>	8.500	<b>620</b>	20.000
<b>245</b>	0.450	<b>420</b>	2.000	<b>490</b>	9.000	<b>622</b>	22.000
<b>250</b>	0.500	<b>522</b>	2.250	<b>495</b>	9.500	<b>624</b>	24.000
<b>255</b>	0.550	<b>527</b>	2.750	<b>610</b>	10.000	<b>625</b>	25.000
<b>260</b>	0.600	<b>430</b>	3.000	<b>710</b>	10.500	<b>630</b>	30.000
<b>265</b>	0.650	<b>435</b>	3.500	<b>611</b>	11.000	<b>635</b>	<sup>3</sup> 35.000
<b>270</b>	0.700	<b>440</b>	4.000	<b>711</b>	11.500	<b>640</b>	<sup>3</sup> 40.000
<b>275</b>	0.750	<b>445</b>	4.500	<b>612</b>	12.000	<b>645</b>	<sup>3</sup> 45.000
<b>280</b>	0.800	<b>450</b>	5.000	<b>712</b>	12.500	<b>650</b>	<sup>3</sup> 50.000

**8 TERMINAL <sup>4</sup>**

<p><b>1</b> <sup>5</sup> Push-On 0.250 Tab (Q.C.)</p> <p><b>2</b> Screw 8-32 with upturned lugs</p> <p><b>3</b> <sup>6</sup> Screw 8-32 (Bus Type)</p> <p><b>4</b> Screw 10-32 with upturned lugs</p> <p><b>5</b> <sup>6</sup> Screw 10-32 (Bus Type)</p> <p><b>6</b> Screw 8-32 with upturned lugs &amp; 30° bend</p> <p><b>7</b> Screw 8-32 (Bus Type) &amp; 30° bend</p> <p><b>8</b> Screw 10-32 with upturned lugs &amp; 30° bend</p> <p><b>9</b> Screw 10-32 (Bus Type) &amp; 30° bend</p>	<p><b>B</b> Screw M5 with upturned lugs &amp; 30° bend</p> <p><b>F</b> Screw M5 with upturned lugs &amp; 30° bend</p> <p><b>G</b> Screw M5 (Bus Type) &amp; 30° bend</p> <p><b>H</b> Screw M5 (Bus Type)</p> <p><b>J</b> Screw M5 Back Connect</p> <p><b>K</b> Screw 10-32 Back Connect</p> <p><b>M</b> <sup>6</sup> M6 Threaded Stud</p> <p><b>N</b> Screw M4 Back Connect</p> <p><b>P</b> <sup>7</sup> Printed Circuit Board Terminals</p> <p><b>Q</b> <sup>8</sup> Push-In Stud</p> <p><b>Y</b> Screw 8-32 Back Connect</p>
-------------------------------------------------------------------------------------------------------------------------------------------------------------------------------------------------------------------------------------------------------------------------------------------------------------------------------------------------------------------------------------------------------------------------------------------------------------------------------------------------	--------------------------------------------------------------------------------------------------------------------------------------------------------------------------------------------------------------------------------------------------------------------------------------------------------------------------------------------------------------------------------------------------------------------------------------------------------------------------------------------------------------------------------

**9 ACTUATOR COLOR & LEGEND**

Actuator Color	ON-OFF	Dual	Legend Color
White	<b>B</b>	<b>1</b>	Black
Black	<b>D</b>	<b>2</b>	White
Red	<b>G</b>	<b>3</b>	White
Green	<b>J</b>	<b>4</b>	White
Blue	<b>L</b>	<b>5</b>	White
Yellow	<b>N</b>	<b>6</b>	Black
Gray	<b>Q</b>	<b>7</b>	Black
Orange	<b>S</b>	<b>8</b>	Black

**10 MOUNTING / BARRIERS**

	MOUNTING STYLE	BARRIERS
<b>Threaded Insert, 2 per pole</b>		
<b>1</b>	6-32 x 0.195 inches	no
<b>A</b>	6-32 x 0.195 inches ( <i>multi-pole units only</i> )	yes
<b>2</b>	ISO M3 x 5mm	no
<b>B</b>	ISO M3 x 5mm	yes
<b>Rectangular Adapter Plate with mounting centers of 2.062 inches [52.37mm] and Threaded insert, 2 per pole</b>		
<b>3</b>	6-32 x 0.225 inches	no
<b>C</b>	6-32 X 0.225 inches ( <i>multi-pole units only</i> )	yes
<b>4</b>	ISO M3 x 6.5mm	no
<b>D</b>	ISO M3 x 6.5mm	yes
<b>Front panel Snap-In, 0.75" [19.05mm] wide bezel</b>		
<b>5</b>	without Handleguard	no
<b>6</b>	without Handleguard (multipole only)	yes
<b>Front panel Snap-In, 0.96" wide bezel</b>		
<b>7</b>	without Handleguard, 1-pole 0.96" wide; multipole units have .105" bezel overhang on all sides	no
<b>8</b>	without Handleguard, 1-pole 0.96" wide; (multipole only) .105" bezel overhang on all sides	yes

**11 MAXIMUM APPLICATION RATING**

**M** 80 DC

**12 AGENCY APPROVAL**

**T** UL489A Listed  
**K** UL489A Listed, VDE Certified  
**J** UL489A Listed, TUV Certified

Notes:

- 1 Actuator Code:  
A: Handle tie pin spacer(s) and retainers provided unassembled with multi-pole units.  
S: Handle moves to mid-position only upon electrical trip of the breaker.  
T: Handle moves to mid-position and alarm switch activates only upon electrical trip of the breaker.
- 2 On multi-pole breakers, one auxiliary switch is supplied, mounted in the extreme right pole.
- 3 VDE Certification available with single pole breakers only. UL489A Listing available with one and two pole breakers.
- 4 Screw Terminals are recommended on ratings greater than 20 amps. Ratings over 30 amps are only available with Terminal Codes 5, 9, G, H, J, K, M and Q.
- 5 Terminal Code 1 (Push-On) available up to 25 amps with TUV or VDE Certification and 30 amps with UL489A Listing, but is not recommended over 20 amps.
- 6 Terminal Codes 3, 5 and H (Bus Type) with TUV or VDE, are supplied with Lock Washers, and Terminal Code M (M6 Threaded Stud) with TUV or VDE is supplied with Lock and Flat Washers. These breakers are only TUV or VDE Certified when the washers are used.
- 7 Single pole breakers with Terminal Code P (Printed Circuit Board) are available up to 30 amps with VDE Certification and 50 amps with UL489A Listing.
- 8 Terminal Code Q not available with VDE approvals.

**B A 1 - B 0 - 24 - 450 - 1 B A - K G**

1 Series      2 Actuator      3 Poles      4 Circuit      5 Aux/Alarm Switch      6 Frequency & Delay      7 Current Rating      8 Terminal      9 Actuator Color      10 Mounting/Barriers      11 Max. Appl. Rating      12 Agency Approval

**1 SERIES**  
B

**2 ACTUATOR 1**  
A Handle, one per pole  
B Handle, one per multipole unit  
S Mid-Trip Handle, one per pole  
T Mid-Trip Handle, one per pole & Alarm Switch

**3 POLES 2**  
1 One      2 Two      3<sup>3</sup> Three

**4 CIRCUIT**  
B Series Trip (Current)

**5 AUXILIARY / ALARM SWITCH 4**  
0 without Aux Switch      3 S.P.D.T., 0.110 Solder Lug  
1 S.P.D.T., 0.093 Q.C. Term.      8 S.P.S.T., 0.187 Q.C. Term.  
2 S.P.D.T., 0.110 Q.C. Term.      9 S.P.D.T., 0.187 Q.C. Term.

**6 FREQUENCY & DELAY**  
21 AC Ultra Short      42 AC, Short, Hi-Inrush  
22 AC Short      44 AC, Medium, Hi-Inrush  
24 AC Medium      46 AC, Long, Hi-Inrush  
26 AC Long

**7 CURRENT RATING (AMPERES)**

CODE	AMPERES	CODE	AMPERES	CODE	AMPERES	CODE	AMPERES
210	0.100	280	0.800	445	4.500	711	11.500
215	0.150	285	0.850	450	5.000	612	12.000
220	0.200	290	0.900	455	5.500	712	12.500
225	0.250	295	0.950	460	6.000	613	13.000
230	0.300	410	1.000	465	6.500	614	14.000
235	0.350	512	1.250	470	7.000	615	15.000
240	0.400	415	1.500	475	7.500	616	16.000
245	0.450	517	1.750	480	8.000	617	17.000
250	0.500	420	2.000	485	8.500	618	18.000
255	0.550	522	2.250	490	9.000	620	20.000
260	0.600	527	2.750	495	9.500	622	22.000
265	0.650	430	3.000	610	10.000	624	24.000
270	0.700	435	3.500	710	10.500	625	25.000
275	0.750	440	4.000	611	11.000	630	30.000

**8 TERMINAL 4**

1 Push-On 0.250 Tab (Q.C.)	A Load Terminal #8 Screw with QC Combination (Special Catalog #)
2 Screw 8-32 with upturned lugs	B Screw M5 with upturned lugs & 30° bend
3 Screw 8-32 (Bus Type)	F Screw M5 with upturned lugs & 30° bend
4 Screw 10-32 with upturned lugs	G Screw M5 (Bus Type) & 30° bend
5 Screw 10-32 (Bus Type)	H Screw M5 (Bus Type)
6 Screw 8-32 with upturned lugs & 30° bend	J Screw M5 Back Connect
7 Screw 8-32 (Bus Type) & 30° bend	K Screw 10-32 Back Connect
8 Screw 10-32 with upturned lugs & 30° bend	M M6 Threaded Stud
9 Screw 10-32 (Bus Type) & 30° bend	N Screw M4 Back Connect
	Q Push-In Stud
	Y Screw 8-32 Back Connect

**9 ACTUATOR COLOR & LEGEND 6**

Actuator Color	ON-OFF	Dual	Legend Color
White	B	1	Black
Black	D	2	White
Red	G	3	White
Green	J	4	White
Blue	L	5	White
Yellow	N	6	Black
Gray	Q	7	Black
Orange	S	8	Black

**10 MOUNTING / BARRIERS**

MOUNTING STYLE	BARRIERS
<b>Threaded Insert, 2 per pole</b>	
A 6-32 x 0.195 inches (multi-pole units only)	yes
B ISO M3 x 5mm	yes
<b>Rectangular Adapter Plate with mounting centers of 2.062 inches [52.37mm] and Threaded insert, 2 per pole 7</b>	
C 6-32 X 0.225 inches (multi-pole units only)	yes
D ISO M3 x 6.5mm	yes
<b>Front panel Snap-In, 0.75" [19.05mm] wide bezel</b>	
6 without Handguard (multipole only)	yes
<b>Front panel Snap-In, 0.96" wide bezel</b>	
8 without Handguard, 1-pole 0.96" wide; (multipole only) .105" bezel overhang on all sides	yes

**11 MAXIMUM APPLICATION RATING**  
C 8 120/240VAC  
K 120VAC

**12 AGENCY APPROVAL**  
G UL489 Listed  
3 UL489 Listed, TUV Certified

- Notes:
- Actuator Code:  
A: Handle tie pin spacer(s) and retainers provided un-assembled with multi-pole units.  
B: Handle location as viewed from front of breaker:  
2 pole - left pole      3 pole - center pole  
S: Handle moves to mid-position only upon electrical trip of the breaker. Available with circuit codes B, C, D, E, F, G, H and K.  
T: Handle moves to mid-position and alarm switch activates only upon electrical trip of the breaker. Available with circuit codes B & C.
  - All poles must be same polarity.
  - 3 pole units available only when 1 of 3 poles is neutral.
  - Auxiliary/Alarm Switch circuit must be same polarity as the main circuit. On multi-pole breakers, one auxiliary switch is supplied, mounted in the extreme right pole.
  - Screw Terminals are recommended on ratings greater than 20 amps.
  - Standard actuator colors are black and white.
  - Adapter plate with mounting centers of 2.082 inches. Available with Actuator Codes A, S and T.
  - Voltage Rating available with 2 and 3-pole breakers only.
  - Barriers supplied on multi-pole units only.



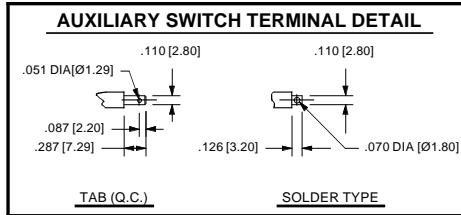
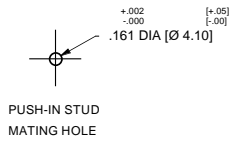
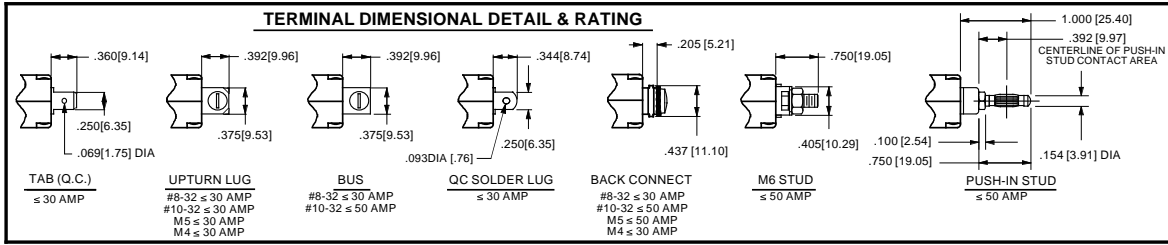
## Circuit & Terminal Diagrams: in. [mm]

	CIRCUIT SCHEMATIC		CIRCUIT CODE	SWITCH CODE	CIRCUIT SCHEMATIC		CIRCUIT CODE	AUX. SWITCH CODE
	ANSI	IEC			ANSI	IEC		
<p>SERIES TRIP (2 TERM.S.)</p>	<p>SWITCH ONLY (NO COIL)</p>		A	O	<p>SERIES TRIP</p>		B	O
<p>SERIES TRIP W/ AUX SWITCH (5 TERM.S.)</p>	<p>SWITCH ONLY (NO COIL) WITH AUXILIARY SWITCH</p>		A	2 3 4	<p>SERIES TRIP WITH AUXILIARY / ALARM SWITCH</p>		B	2 3 4
<p>SHUNT TRIP (3 TERM.S.)</p>	<p>SHUNT TRIP</p>		D E	0	<p>DUAL COIL; SERIES TRIP CURRENT COIL, SHUNT TRIP VOLTAGE COIL</p>		H	0
<p>RELAY TRIP (4 TERM.S.)</p>	<p>RELAY TRIP</p>		F G	0	<p>DUAL COIL; SERIES TRIP CURRENT COIL, RELAY TRIP VOLTAGE COIL</p>		K	0

CIRCUIT BREAKER MODE	STANDARD C/B		MID TRIP C/B		MID TRIP C/B	
	HANDLE POSITION	AUX. SWITCH MODE	HANDLE POSITION	ALARM SWITCH MODE	HANDLE POSITION	AUX. SWITCH MODE (w/o ALARM SWITCH)
OFF						
ON						
ELECTRICAL TRIP						

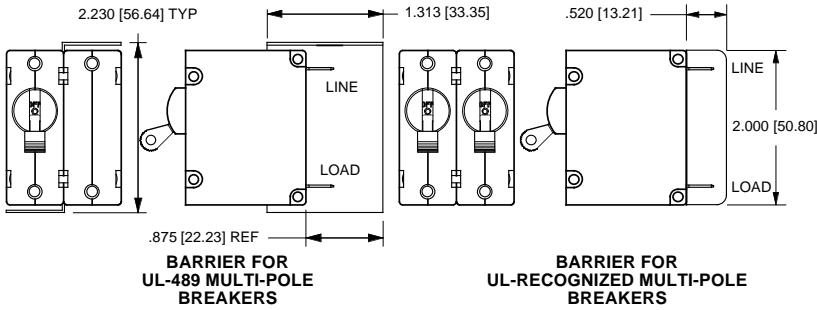
- Notes:
- All dimensions are in inches [millimeters].
  - Tolerance ±.020 [.51] unless otherwise specified.
  - Alarm Switch available with .110 x .020 Q.C. & Solder Lug Terminals Only.

## Circuit & Terminal Diagrams: in. [mm]



**TABLE A  
TIGHTENING TORQUE SPECIFICATIONS**

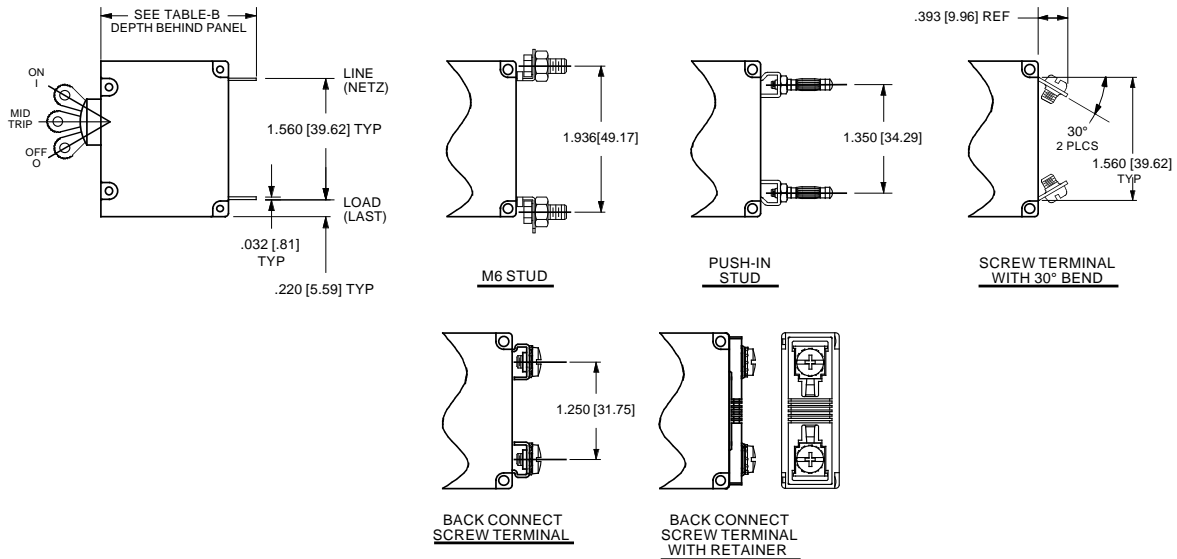
THREAD SIZE	TORQUE
#6-32 & M3 MOUNTING HARDWARE	7-9 IN-LBS [0.8-1.0 NM]
#8-32 & M4 THREAD TERMINAL SCREW	12-15 IN-LBS [1.4-1.7 NM]
#10-32 & M5 THREAD TERMINAL SCREW	15-20 IN-LBS [1.7-2.3 NM]



**TABLE B**

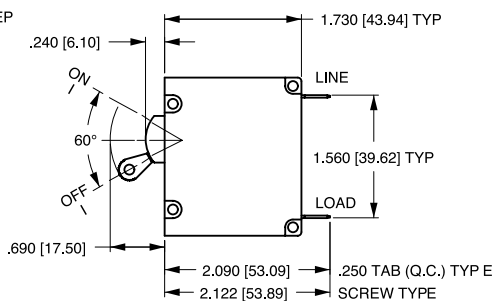
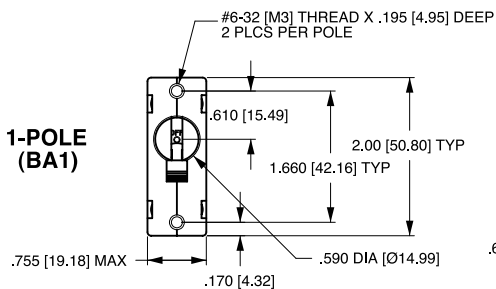
TERMINAL DESCRIPTION	DEPTH BEHIND PANEL
MAIN TAB (Q.C.)	2.090 [53.09]
MAIN SCREW TYPE	2.122 [53.90]
SHUNT, RELAY & DUAL COIL TAB (Q.C.)	2.612 [66.35]
SHUNT, RELAY & DUAL COIL SCREW #8-32 W/UPTURNED LUGS	2.644 [67.16]
AUX. SWITCH* TAB (Q.C.) .110 x .020	2.537 [64.44]
AUX. SWITCH* SOLDER TYPE	2.348 [59.64]

\* AVAILABLE ON SERIES TRIP AND SWITCH ONLY CIRCUITS. WHEN CALLED FOR ON MULTI-POLE UNITS, ONLY ONE AUX. SWITCH IS NORMALLY SUPPLIED, AS SHOWN IN MULTI-POLE IDENTIFICATION SCHEME.

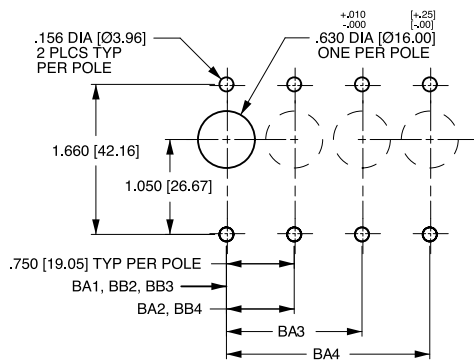
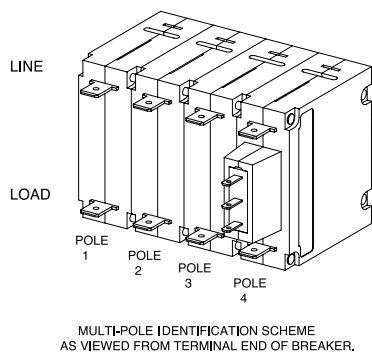
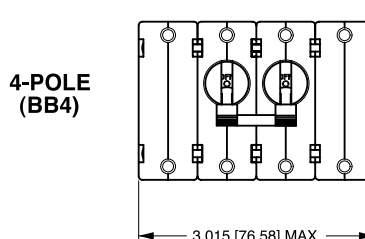
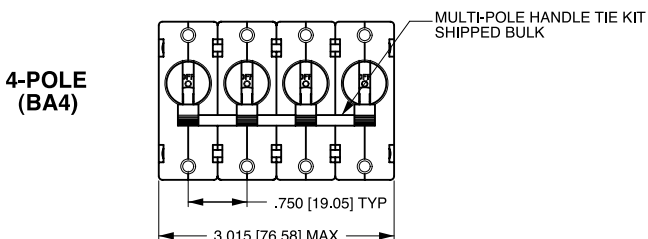
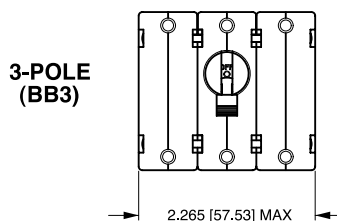
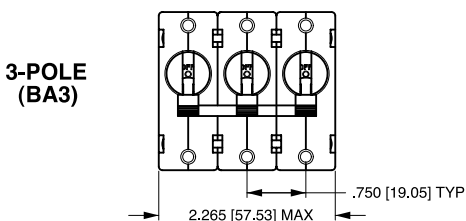
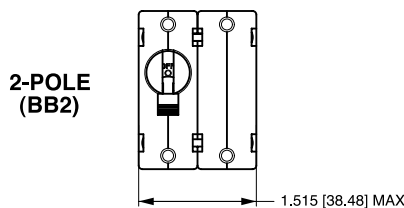
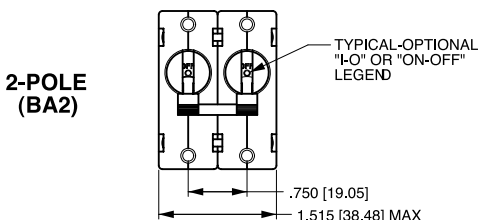


Notes:  
1 All dimensions are in inches [millimeters].  
2 Tolerance ±.020 [.51] unless otherwise specified.

## Dimensional Specifications: in. [mm]



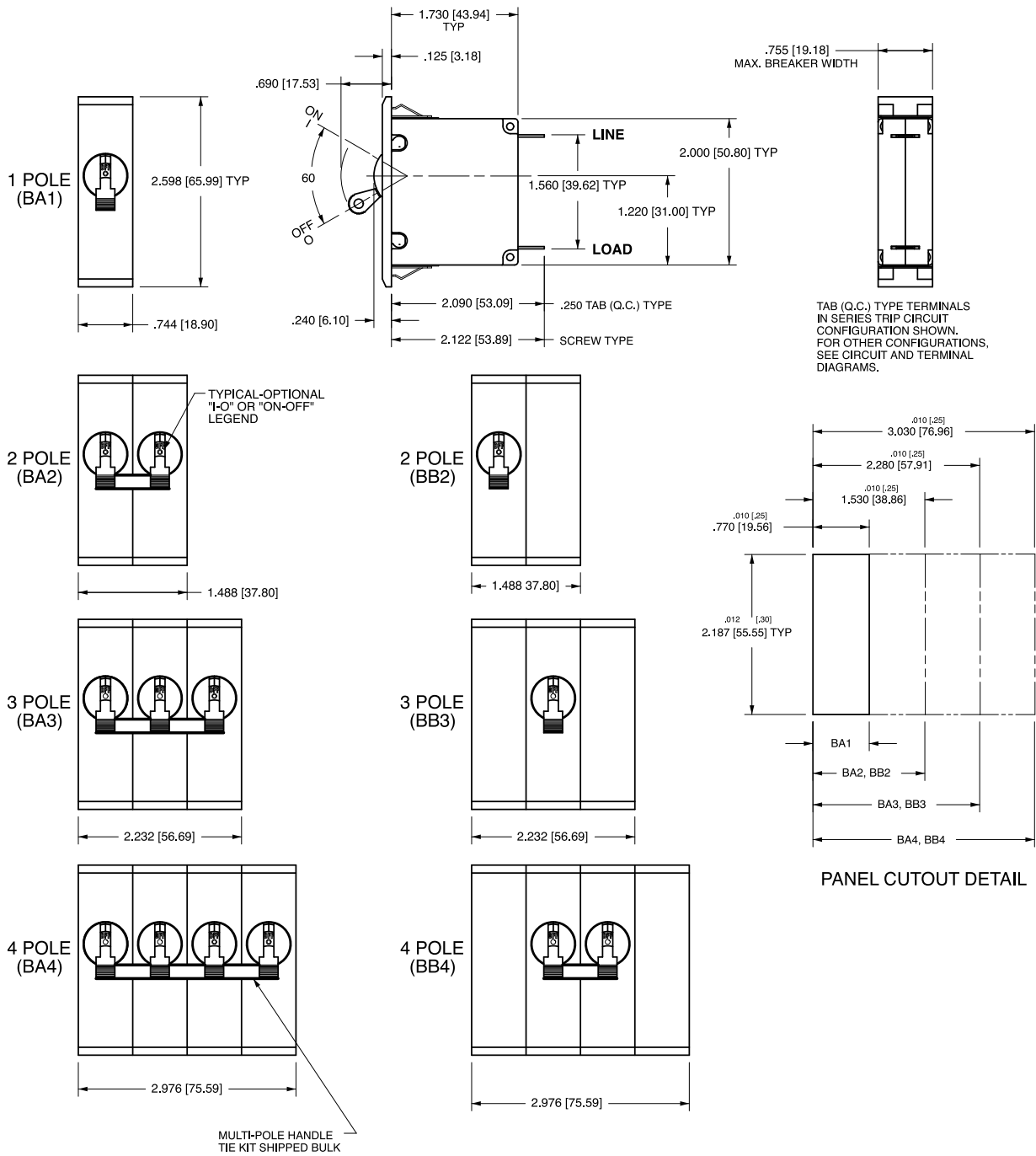
TAB (Q.C.) TYPE TERMINALS IN SERIES TRIP CIRCUIT CONFIGURATION SHOWN. FOR OTHER CONFIGURATIONS, SEE CIRCUIT AND TERMINAL DRAWINGS.



Notes:

- 1 All dimensions are in inches [millimeters].
- 2 Tolerance ±0.20 [.51] unless otherwise specified.

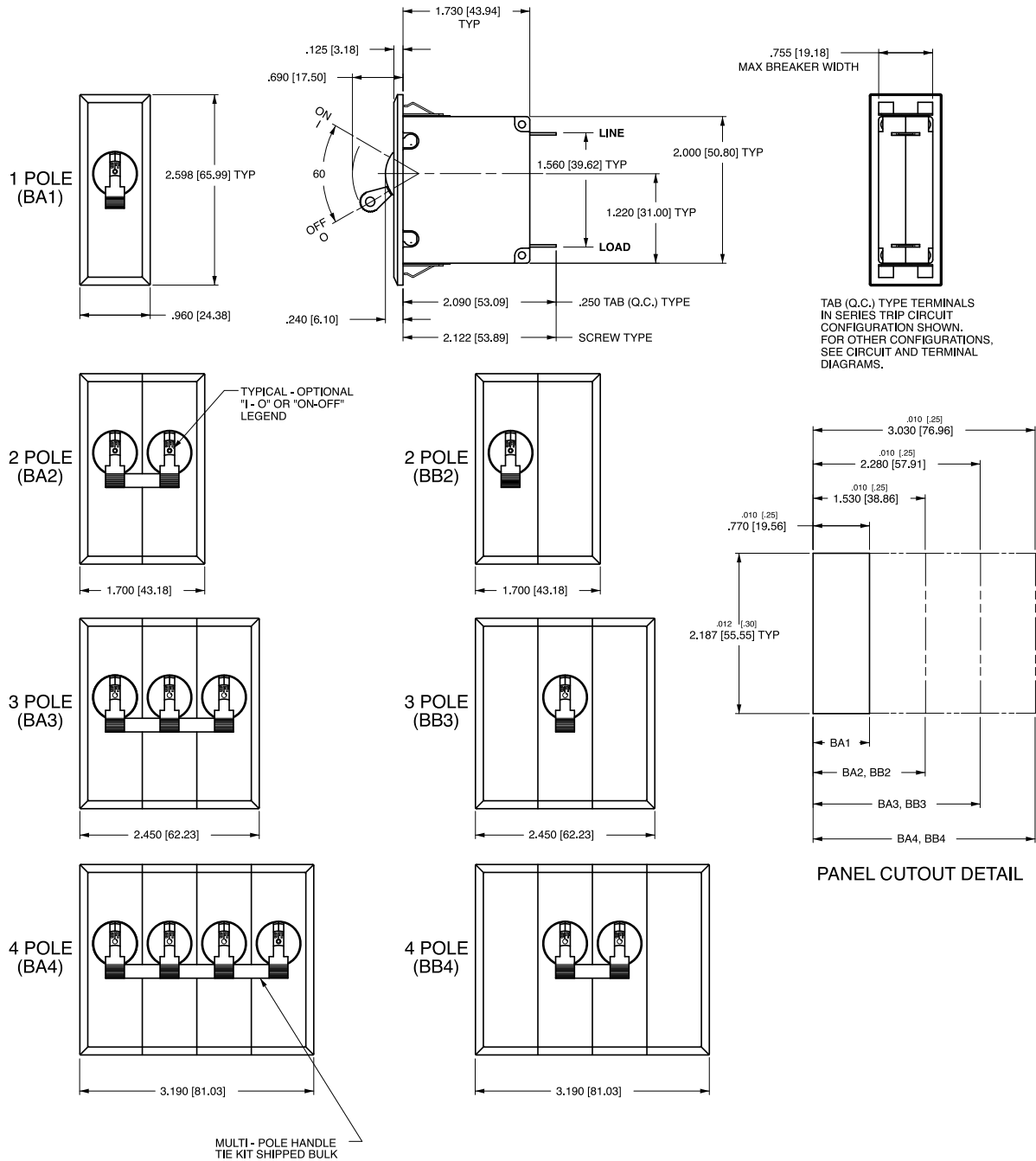
## Dimensional Specifications: in. [mm]



**Notes:**

- 1 All dimensions are in inches [millimeters].
- 2 Recommended panel thickness: .040 [1.02] to .100 [2.54].
- 3 Tolerance  $\pm 0.020$  [.51] unless otherwise specified.

## Dimensional Specifications: in. [mm]



**Notes:**

- 1 All dimensions are in inches [millimeters].
- 2 Recommended panel thickness: .040 [1.02] to .100 [2.54].
- 3 Tolerance  $\pm 0.020$  [.51] unless otherwise specified.

**B** **F** **1** - **B** **0** - **24** - **630** - **2** **3** **A** - **K** **G**

1 Series    2 Actuator    3 Poles    4 Circuit    5 Aux/Alarm Switch    6 Frequency & Delay    7 Current Rating    8 Terminal    9 Actuator Color    10 Mounting/Barriers    11 Max. Appl. Rating    12 Agency Approval

**1 SERIES**

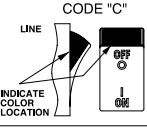
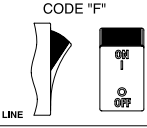
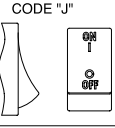
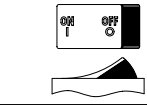
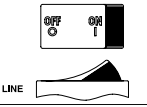
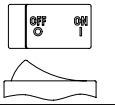
**B**

**2 ACTUATOR**

**Two Color Visi-Rocker**

**C** Indicate ON, vertical legend    **J** Vertical legend  
**D** Indicate ON, horizontal legend    **K** Horizontal legend  
**F** Indicate OFF, vertical legend  
**G** Indicate OFF, horizontal legend

**Single color**

ROCKER STYLE DESCRIPTIONS			
	INDICATE "ON"	INDICATE "OFF"	SINGLE COLOR
VERTICAL STYLE	CODE "C" 	CODE "F" 	CODE "J" 
	CODE "D" 	CODE "G" 	CODE "K" 
HORIZONTAL STYLE			

**3 POLES 1,2**

**1** One    **2** Two    **3** Three

**4 CIRCUIT**

**B** Series Trip (Current)

**5 AUXILIARY / ALARM SWITCH 4**

**0** without Aux Switch    **7** S.P.S.T., 0.110 Q.C. Term. (Gold Contacts)  
**1** S.P.D.T., 0.093 Q.C. Term.    **8** S.P.S.T., 0.187 Q.C. Term.  
**2** S.P.D.T., 0.110 Q.C. Term.    **9** S.P.D.T., 0.187 Q.C. Term.  
**3** S.P.D.T., 0.110 Solder Lug

**6 FREQUENCY & DELAY**

**21** AC Ultra Short    **42** AC, Short, Hi-Inrush  
**22** AC Short    **44** AC, Medium, Hi-Inrush  
**24** AC Medium    **46** AC, Long, Hi-Inrush  
**26** AC Long

**7 CURRENT RATING (AMPERES)**

CODE	AMPERES	CODE	AMPERES	CODE	AMPERES	CODE	AMPERES
020	0.020	220	0.200	415	1.500	495	9.500
025	0.025	225	0.250	517	1.750	610	10.000
030	0.030	230	0.300	420	2.000	710	10.500
035	0.035	235	0.350	522	2.250	611	11.000
040	0.040	240	0.400	527	2.750	711	11.500
045	0.045	245	0.450	430	3.000	612	12.000
050	0.050	250	0.500	435	3.500	712	12.500
055	0.055	255	0.550	440	4.000	613	13.000
060	0.060	260	0.600	445	4.500	614	14.000
065	0.065	265	0.650	450	5.000	615	15.000
070	0.070	270	0.700	455	5.500	616	16.000
075	0.075	275	0.750	460	6.000	617	17.000
080	0.080	280	0.800	465	6.500	618	18.000
085	0.085	285	0.850	470	7.000	620	20.000
090	0.090	290	0.900	475	7.500	622	22.000
095	0.095	295	0.950	480	8.000	624	24.000
210	0.100	410	1.000	485	8.500	625	25.000
215	0.150	512	1.250	490	9.000	630	30.000

**8 TERMINAL 5**

**1** 6 Push-On 0.250 Tab (Q.C.)    **B** Screw M5 with upturned lugs  
**2** Screw 8-32 with upturned lugs    **C** Screw M4 with upturned lugs  
**3** Screw 8-32 (Bus Type)    **F** Screw M5 with upturned lugs & 30° bend  
**4** Screw 10-32 with upturned lugs    **G** Screw M5 (Bus Type) & 30° bend  
**5** Screw 10-32 (Bus Type)    **H** Screw M5 (Bus Type)  
**6** Screw 8-32 with upturned lugs & 30° bend    **J** Screw M5 Back Connect  
**7** Screw 8-32 (Bus Type) & 30° bend    **K** Screw 10-32 Back Connect  
**8** Screw 10-32 with upturned lugs & 30° bend    **N** Screw M4 Back Connect  
**9** Screw 10-32 (Bus Type) & 30° bend    **Y** Screw 8-32 Back Connect

**9 ACTUATOR COLOR & LEGEND**

Actuator or Visi-Color 7	Marking:		Marking Color	
	ON-OFF	Dual 7	Single Color	Visi-Rocker
White	<b>B</b>	<b>1</b>	Black	White
Black	<b>D</b>	<b>2</b>	White	n/a
Red	<b>G</b>	<b>3</b>	White	Red
Green	<b>J</b>	<b>4</b>	White	Green
Blue	<b>L</b>	<b>5</b>	White	Blue
Yellow	<b>N</b>	<b>6</b>	Black	Yellow
Gray	<b>Q</b>	<b>7</b>	Black	Gray
Orange	<b>S</b>	<b>8</b>	Black	Orange

**10 MOUNTING / BARRIERS**

**MOUNTING STYLE**    **BARRIERS 9**  
**Threaded Insert, 2 per pole**  
**A** 6-32 x 0.195 inches (multi-pole units only)    yes  
**B** ISO M3 x 5mm    yes  
**ROCKERGUARD BEZEL**  
**Threaded Insert, 2 per pole**  
**C** 6-32 X 0.225 inches (multi-pole units only)    yes  
**D** ISO M3 x 6.5mm    yes

**11 MAXIMUM APPLICATION RATING**

**C** 8 120/240 VAC  
**K** 120 VAC

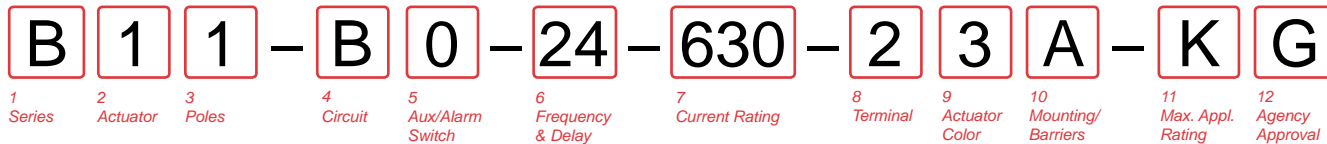
**12 AGENCY APPROVAL**

**G** UL489 Listed  
**3** UL489 Listed, TUV Certified

Notes:

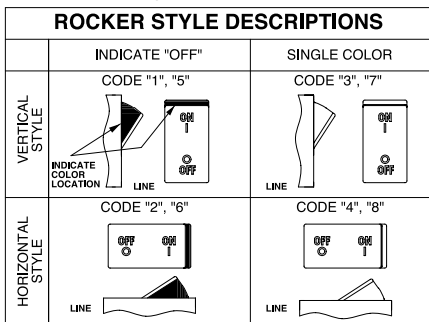
- Multi-pole breakers have all breakers identical except when specifying Auxiliary switch and/or mixed poles, and have one rocker per breaker.
- All poles must be same polarity.
- 3 pole units available only when 1 of 3 poles is neutral.
- On multi-pole breakers, one auxiliary switch is supplied, mounted in the extreme right pole.
- Screw Terminals are recommended on ratings greater than 20 amps.
- Terminal Code 1 (Push-On) available up to 30 amps, but are not recommended over 20 amps.
- Dual Legend = ON-OFF/I-O
- Voltage Rating available with 2 and 3-pole breakers only.
- Barriers supplied on multi-pole units only.





**1 SERIES**  
B

- 2 ACTUATOR 1**  
**Two Color Visi-Rocker**  
 1 Indicate OFF, vertical legend  
 2 Indicate OFF, horizontal legend  
**Single color**  
 3 Vertical legend  
 4 Horizontal legend  
**Push-To-Reset, Visi-Rocker**  
 5 Indicate OFF, vertical legend  
 6 Indicate OFF, horizontal legend  
**Push-To-Reset , Single color**  
 7 Vertical legend  
 8 Horizontal legend



- 3 POLES 2,3**  
 1 One                                      2 Two                                      3 4 Three

- 4 CIRCUIT**  
 B Series Trip (Current)

- 5 AUXILIARY / ALARM SWITCH 4**  
 0 without Aux Switch                      7 S.P.S.T., 0.110 Q.C. Term.  
 1 S.P.D.T., 0.093 Q.C. Term.              (Gold Contacts)  
 2 S.P.D.T., 0.110 Q.C. Term.              8 S.P.S.T., 0.187 Q.C. Term.  
 3 S.P.D.T., 0.110 Solder Lug              9 S.P.D.T., 0.187 Q.C. Term.

- 6 FREQUENCY & DELAY**  
 21 AC Ultra Short                              42 AC, Short, Hi-Inrush  
 22 AC Short                                      44 AC, Medium, Hi-Inrush  
 24 AC Medium                                    46 AC, Long, Hi-Inrush  
 26 AC Long

**7 CURRENT RATING (AMPERES)**

CODE	AMPERES				
020	0.020	220	0.200	415	1.500
025	0.025	225	0.250	517	1.750
030	0.030	230	0.300	420	2.000
035	0.035	235	0.350	522	2.250
040	0.040	240	0.400	527	2.750
045	0.045	245	0.450	430	3.000
050	0.050	250	0.500	435	3.500
055	0.055	255	0.550	440	4.000
060	0.060	260	0.600	445	4.500
065	0.065	265	0.650	450	5.000
070	0.070	270	0.700	455	5.500
075	0.075	275	0.750	460	6.000
080	0.080	280	0.800	465	6.500
085	0.085	285	0.850	470	7.000
090	0.090	290	0.900	475	7.500
095	0.095	295	0.950	480	8.000
100	0.100	300	1.000	485	8.500
110	0.110	310	1.100	490	9.000
125	0.125	325	1.250	500	10.000
150	0.150	350	1.500	550	15.000
200	0.200	400	2.000	600	20.000
250	0.250	450	2.500	650	25.000
300	0.300	500	3.000	700	30.000

- 8 TERMINAL 6**  
 1 7 Push-On 0.250 Tab (Q.C.)              B Screw M5 with upturned lugs  
 2 Screw 8-32 with upturned lugs        C Screw M4 with upturned lugs  
 3 Screw 8-32 (Bus Type)                  F Screw M5 with upturned lugs  
 4 Screw 10-32 with upturned lugs        & 30° bend  
 5 Screw 10-32 (Bus Type)                  G Screw M5 (Bus Type) & 30° bend  
 6 Screw 8-32 with upturned lugs        H Screw M5 (Bus Type)  
 & 30° bend                                      J Screw M5 Back Connect  
 7 Screw 8-32 (Bus Type)                  K Screw 10-32 Back Connect  
 & 30° bend                                      N Screw M4 Back Connect  
 8 Screw 10-32 with upturned lugs        Y Screw 8-32 Back Connect  
 & 30° bend  
 9 Screw 10-32 (Bus Type)  
 & 30° bend

**9 ACTUATOR COLOR & LEGEND**

Actuator or Visi-Color 8	Marking:		Marking Color	
	ON-OFF	Dual 8	Single Color	Visi-Rocker
White	B	1	Black	White
Black	D	2	White	n/a
Red	G	3	White	Red
Green	J	4	White	Green
Blue	L	5	White	Blue
Yellow	N	6	Black	Yellow
Gray	Q	7	Black	Gray
Orange	S	8	Black	Orange

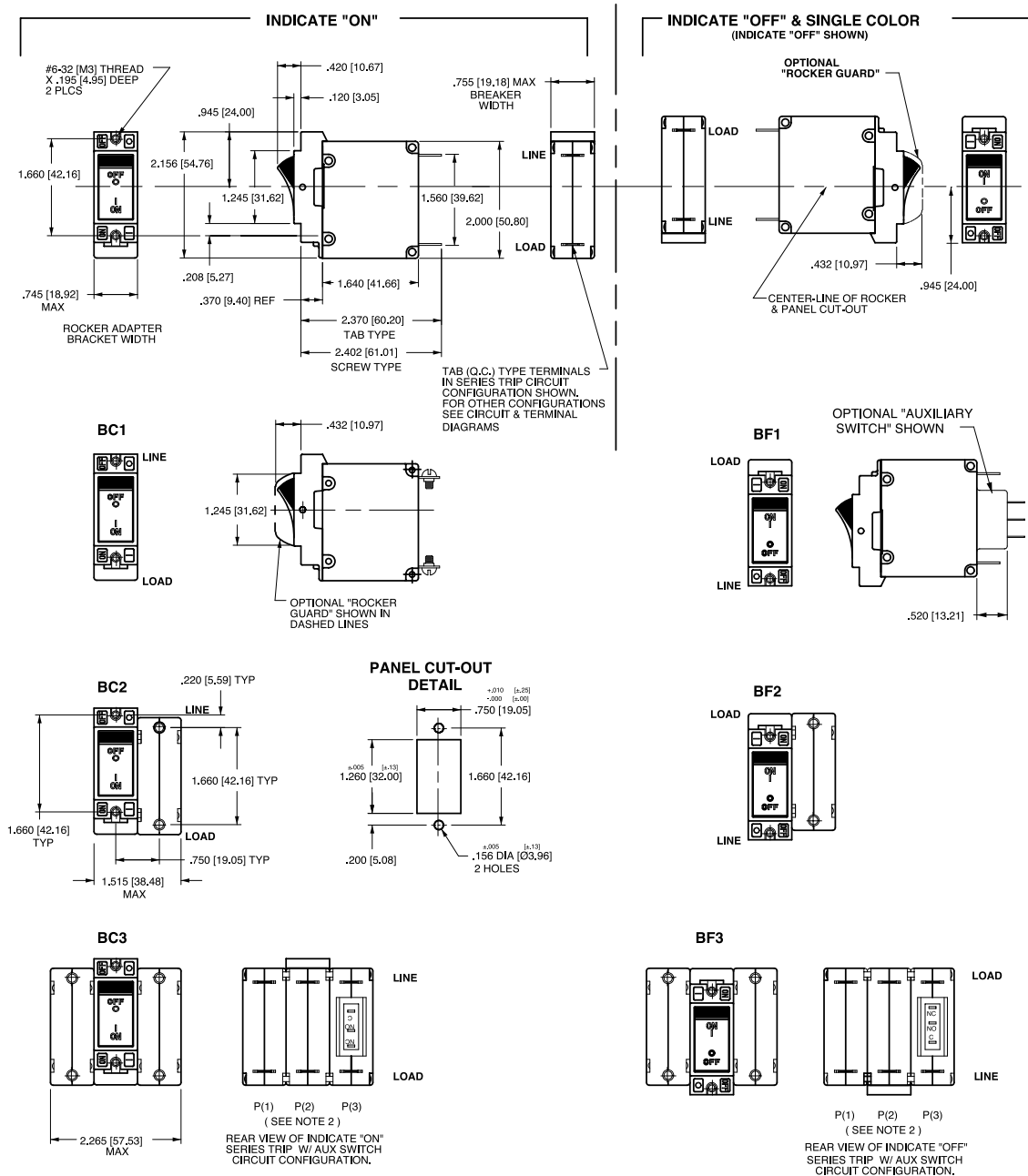
- 10 MOUNTING / BARRIERS 9**  
**STANDARD ROCKER BEZEL**                                      BARRIERS 12  
 Threaded Insert, 2 per pole  
**FLAT ROCKER ACTUATOR**  
 A 6-32 x 0.195 inches (multi-pole units only)              yes  
 B ISO M3 x 5mm                                                      yes  
**RECESSED OFF SIDE ROCKER ACTUATOR 10**  
 E 6-32 X 0.225 inches (multi-pole units only)              yes  
 F ISO M3 x 6.5mm                                                      yes  
**PUSH-TO-RESET BEZEL, Threaded Insert, 2 per pole**  
 C 6-32 x 0.195 inches                                                      yes  
 D ISO M3 x 5mm                                                      yes

- 11 MAXIMUM APPLICATION RATING**  
 C 11 120/240 VAC  
 K 120 VAC

- 12 AGENCY APPROVAL**  
 G UL489 Listed  
 3 UL489 Listed, TUV Certified

Notes:  
 1 Push-To-Reset actuators have OFF portion of rocker shrouded.  
 2 Multi-pole breakers have all breakers identical except when specifying Auxiliary switch and/or mixed poles, and have one rocker per breaker.  
 3 All poles must be same polarity.  
 4 3 pole units available only when 1 of 3 poles is neutral.  
 5 On multi-pole breakers, one auxiliary switch is supplied, mounted in the extreme right pole.  
 6 Screw Terminals are recommended on ratings greater than 20 amps.  
 7 Terminal Code 1 (Push-On) available up to 30 amps, but are not recommended over 20 amps.  
 8 Color shown is visi and legend with remainder of rocker black. Dual = ON-OFF/I-O legend.  
 9 Legend on Push-to-reset bezel/shroud is white with single color actuator codes 7 & 8. Legend on Push-To-Reset bezel/shroud matches Visi-Color of rocker with actuator codes 5 & 6.  
 10 Recessed "off-side" available with actuator codes 1, 2, 3 & 4. Legends on rocker are available in ink stamping only.  
 11 Voltage rating available with 2 & 3-pole breakers only.  
 12 Barriers supplied on multi-pole units only.

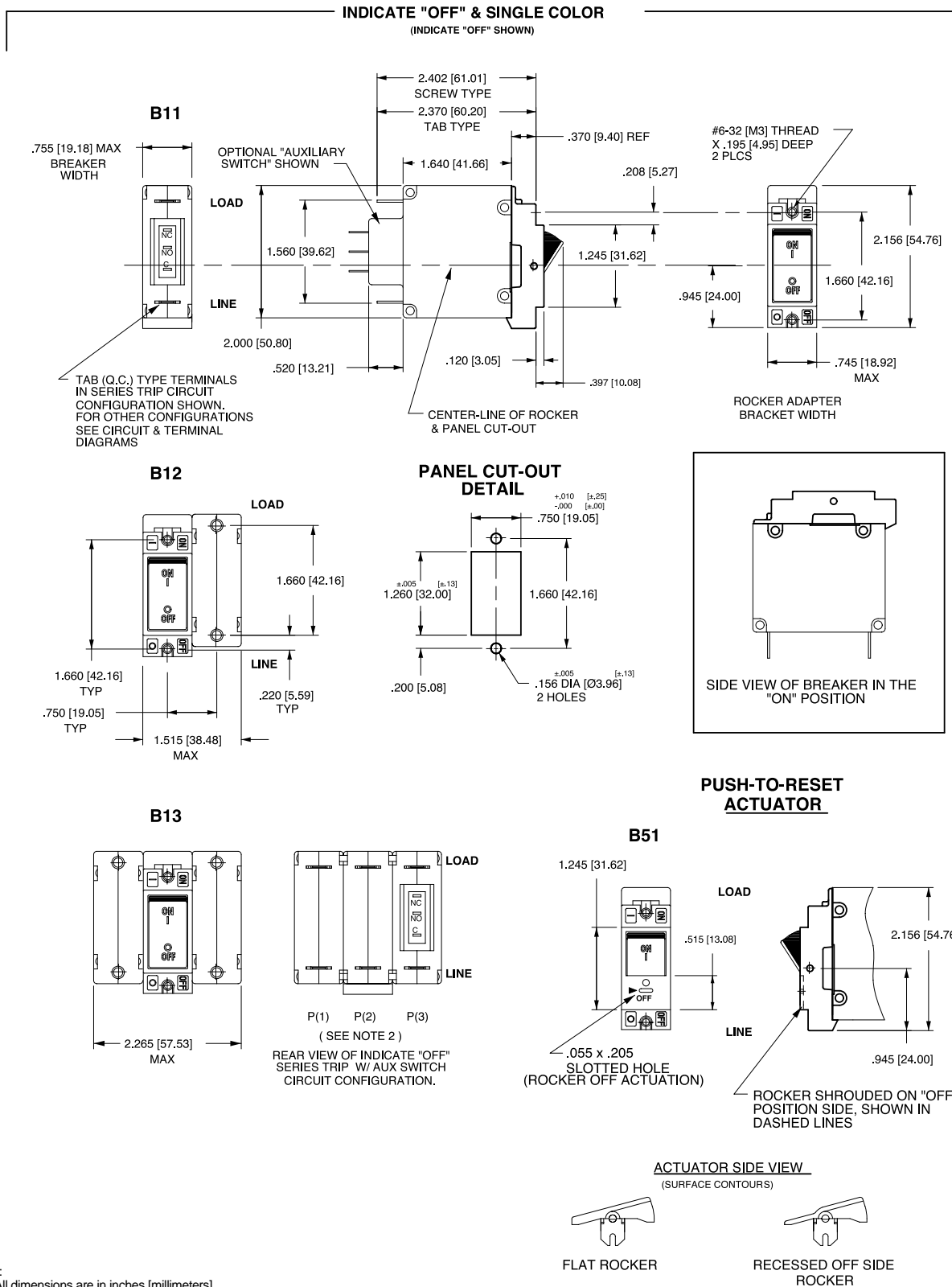
## Dimensional Specifications: in. [mm]



**Notes:**

- 1 Dimensions apply to all variations shown. Notice that circuit breaker line & load terminal orientation on indicate "OFF" is opposite of indicate "ON".
- 2 For pole orientation with horizontal legend, rotate front view clockwise 90°.
- 3 All dimensions are in inches [millimeters].
- 4 Tolerance ±.020 [51] unless otherwise specified.

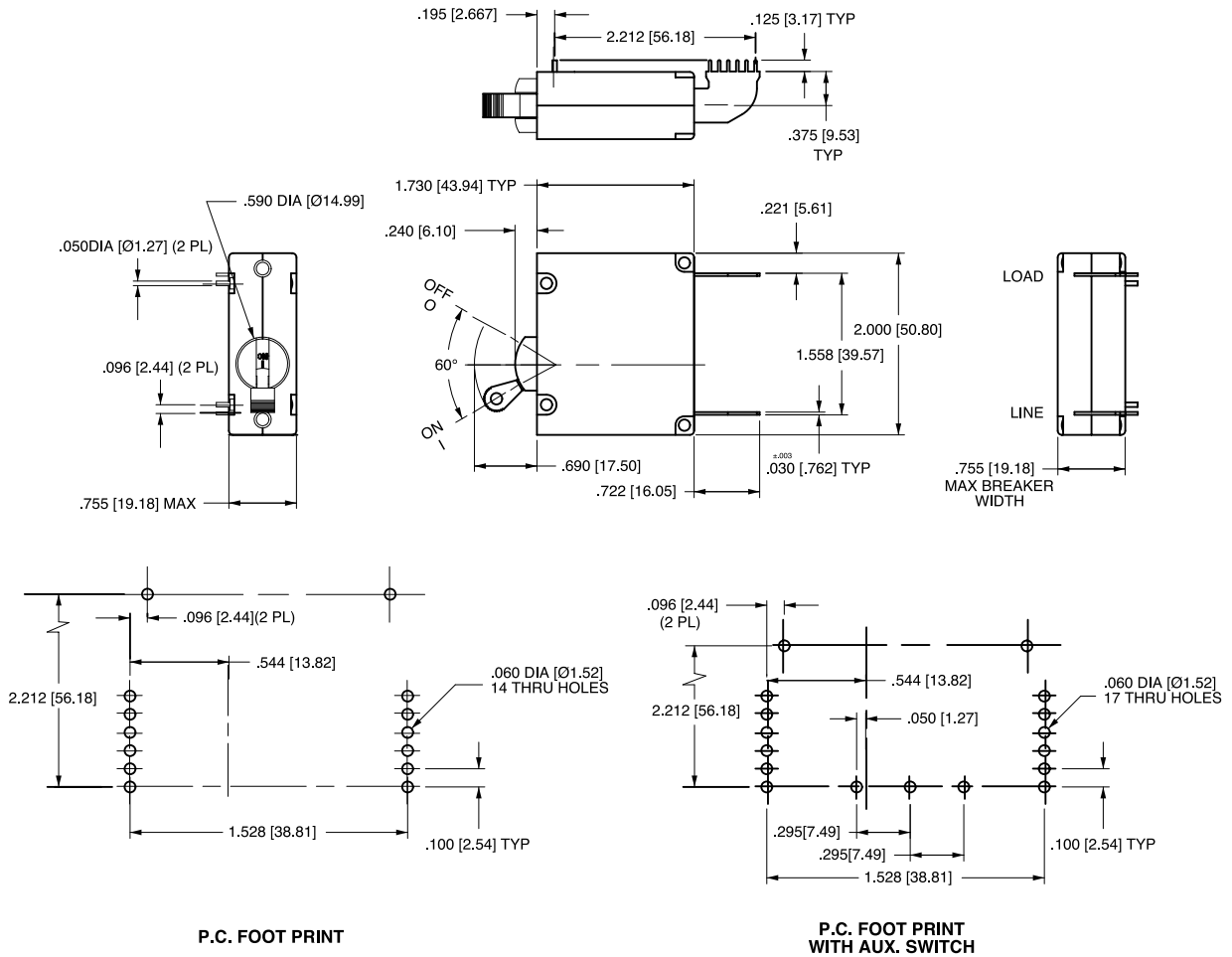
## Dimensional Specifications: in. [mm]



**Notes:**

- 1 All dimensions are in inches [millimeters].
- 2 For pole orientation with horizontal legend, rotate front view clockwise 90°.
- 3 Tolerance  $\pm .010$  [.25] unless otherwise specified.

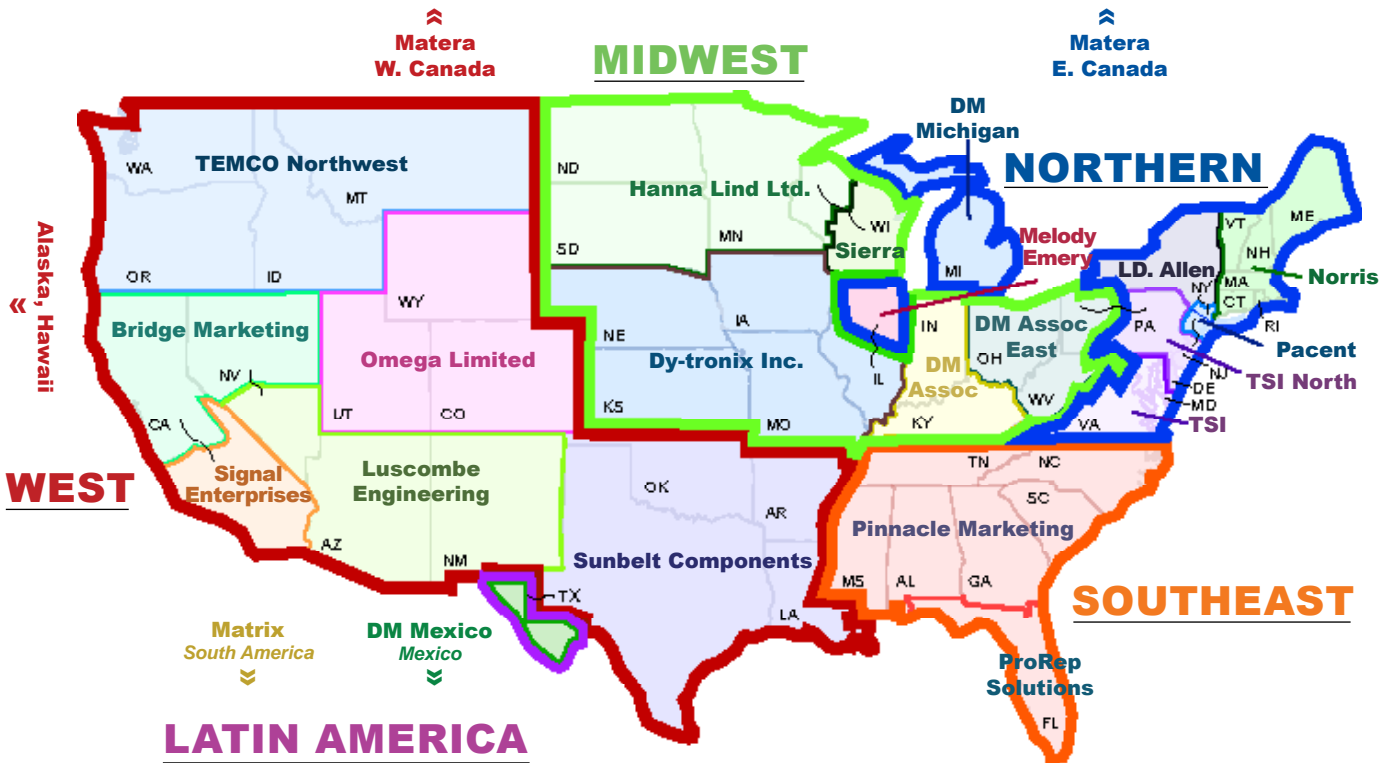
## PC Terminal Diagrams: in. [mm]



- Notes:
- 1 All dimensions are in inches [millimeters].
  - 2 For pole orientation with horizontal legend, rotate front view clockwise 90°.
  - 3 Tolerance ±.010 [.25] unless otherwise specified.

## Authorized Sales Representatives

Click on the group name on the map below to find your local representative or visit [www.carlingtech.com/findarep](http://www.carlingtech.com/findarep).



Americas



Europe  
Middle East  
Africa



Asia-Pacific  
Oceania

## About Carling

Founded in 1920, Carling Technologies is a leading manufacturer of electrical and electronic switches and assemblies, circuit breakers, electronic controls, power distribution units, and multiplexed power distribution systems. With four ISO registered manufacturing facilities and technical sales offices worldwide, Carling Technologies Sales, Service and Engineering teams do much more than manufacture electrical components, they engineer powerful solutions! To learn more about Carling please visit [www.carlingtech.com/company-profile](http://www.carlingtech.com/company-profile).

To view all of Carling’s environmental, quality, health & safety certifications please visit [www.carlingtech.com/environmental-certifications](http://www.carlingtech.com/environmental-certifications)

## **Worldwide Headquarters**

Carling Technologies, Inc.  
60 Johnson Avenue, Plainville, CT 06062  
**Phone:** 860.793.9281 **Fax:** 860.793.9231  
**Email:** sales@carlingtech.com

**Northern Region Sales Office:** nrsm@carlingtech.com  
**Southeast Region Sales Office:** sersm@carlingtech.com  
**Midwest Region Sales Office:** mrrsm@carlingtech.com  
**West Region Sales Office:** wrsm@carlingtech.com  
**Latin America Sales Office:** larsm@carlingtech.com

## **Asia-Pacific Headquarters**

Carling Technologies, Asia-Pacific Ltd.,  
Kowloon, Hong Kong  
**Phone:** Int + 852-2737-2277 **Fax:** Int + 852-2736-9332  
**Email:** sales@carlingtech.com.hk

**Shenzhen, China:** shenzhen@carlingtech.com  
**Shanghai, China:** shanghai@carlingtech.com  
**Pune, India:** india@carlingtech.com  
**Kaohsiung, Taiwan:** taiwan@carlingtech.com  
**Yokohama, Japan:** japan@carlingtech.com

## **Europe | Middle East | Africa Headquarters**

Carling Technologies LTD  
4 Airport Business Park, Exeter Airport,  
Clyst Honiton, Exeter, Devon, EX5 2UL, UK  
**Phone:** Int + 44 1392.364422 **Fax:** Int + 44 1392.364477  
**Email:** ltd.sales@carlingtech.com

**Germany:** gmbh@carlingtech.com  
**France:** sas@carlingtech.com



**Carling Technologies™**

Innovative Designs. Powerful Solutions.