

CORNING

Now EDGE8™ Delivers Even More Value



Corning's award-winning EDGE8™ solution is the industry's first modular, tip-to-tip optical cabling system to feature a Base-8 design to maximize per-rack-unit density for better network scalability and improved link performance. And now our EDGE8 solution delivers even more value – more applications, more options, more flexibility, more security, and more ways to seamlessly migrate to 40, 100, and even 400G.

MORE APPLICATIONS

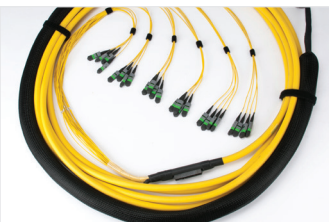


EDGE8 FX housing

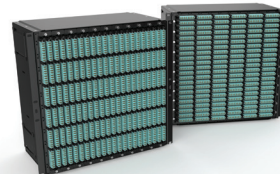


Overhead and subfloor distribution

MORE OPTIONS



EDGE8 high-fiber-count trunks



EDGE8 port replication housing

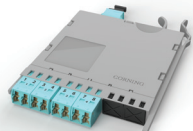


EDGE8 port tap modules and harnesses

MORE FLEXIBILITY



EDGE8 LC panels



Legacy EDGE™ housing compatibility



EDGE8 hybrid trunks

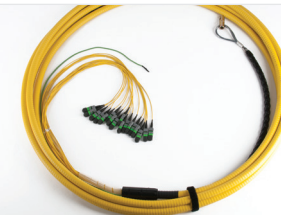


EDGE8 mounting bracket

MORE SECURITY

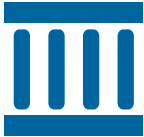


EDGE8 secure solutions



EDGE8 armored trunks

More applications



EDGE8™ FX reduced-depth housings can be installed in third-party floor boxes or back-to-back in 4-post racks and cabinets.

Fiber zone box distribution solution creates a clever interconnection space in standard 2 x 2 ft overhead or subfloor tile.



Now EDGE8™ Delivers Even More Value



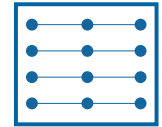
More options



EDGE8 port tap modules provide a nondisruptive interface between end electronics and network monitoring equipment.

EDGE8 high-fiber-count trunks deliver the time savings of preterminated MTP® technology in a pathway-conserving design.

EDGE8 port replication housing mimics director/switch port layout for simplified patching and administration vs. traditional solutions.



More flexibility



Base-8 module makes it possible to outfit legacy EDGE™ housings with our 400G-ready connectivity.

EDGE8 hybrid and hybrid extender trunks expand our portfolio to include MTP-to-LC breakout connectivity applications.



EMOD 1U housing is designed specifically for highly cost-constrained or space-restricted installations.



More security

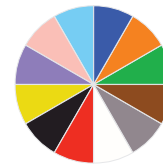
10%

EDGE8 customizable secure solutions enable convenient network identification and physical security options.

EDGE8 armored trunks provide up to 7 times the crush resistance of a standard trunk.



EDGE8 secure solutions feature non-keyed LC and MTP technology in a wide array of jacket and connector colors.



For more ways to seamlessly migrate to 40, 100, even 400G, visit www.corning.com/opcomm/edge8

Corning Optical Communications LLC • PO Box 489 • Hickory, NC 28603-0489 USA • 800-743-2675 • FAX: 828-325-5060 • International: +1-828-901-5000 • www.corning.com/opcomm

Corning Optical Communications reserves the right to improve, enhance, and modify the features and specifications of Corning Optical Communications products without prior notification. A complete listing of the trademarks of Corning Optical Communications is available at www.corning.com/opcomm/trademarks. All other trademarks are the properties of their respective owners. Corning Optical Communications is ISO 9001 certified. © 2016 Corning Optical Communications. All rights reserved. LAN-2106-AEN / October 2016