

### revision history |

Issue	Date	Reason for Change
2	February 2010	Added option to purchase shell and skirt kits separately
1	September 2009	Initial release

### related literature |

003-735	OptiTect® Premier Local Convergence Cabinet
003-746	OptiTect® Premier Local Convergence Cabinet (864-fiber Capacity)

## 1. Carton Contents

### Shell and/or Skirt Kit

- Skirt
- Skirt Cover
- Shell
- Front Door
- Rear Door

### Skirt Kit

- Skirt
- Skirt Cover

### Shell Kit

- Shell
- Front Door
- Rear Door

## 2. Tools and Materials Required

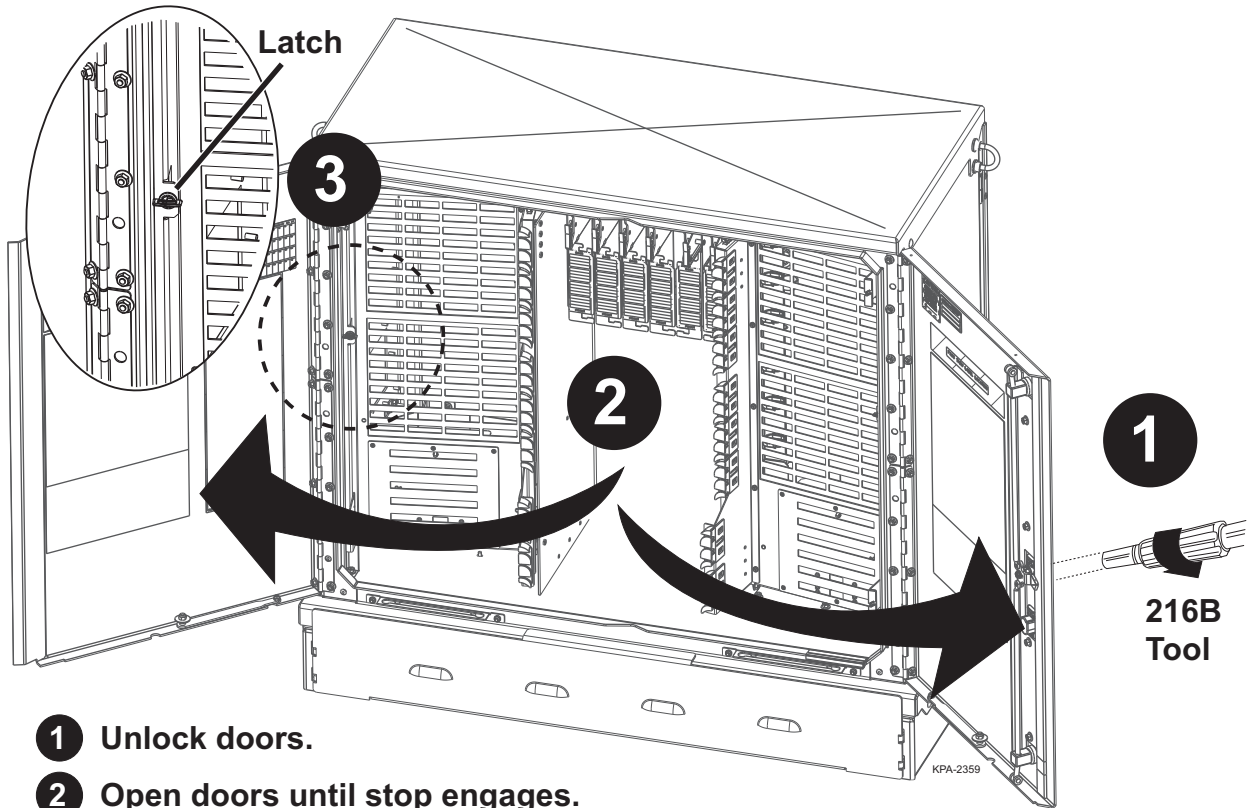
At least two people are required to lift the shell off of and onto the cabinet unit.

- 261B tool
- 7/16-inch nut driver
- 5/16-inch nut driver
- Phillips-head screwdriver
- Wooden blocks, if replacing skirt

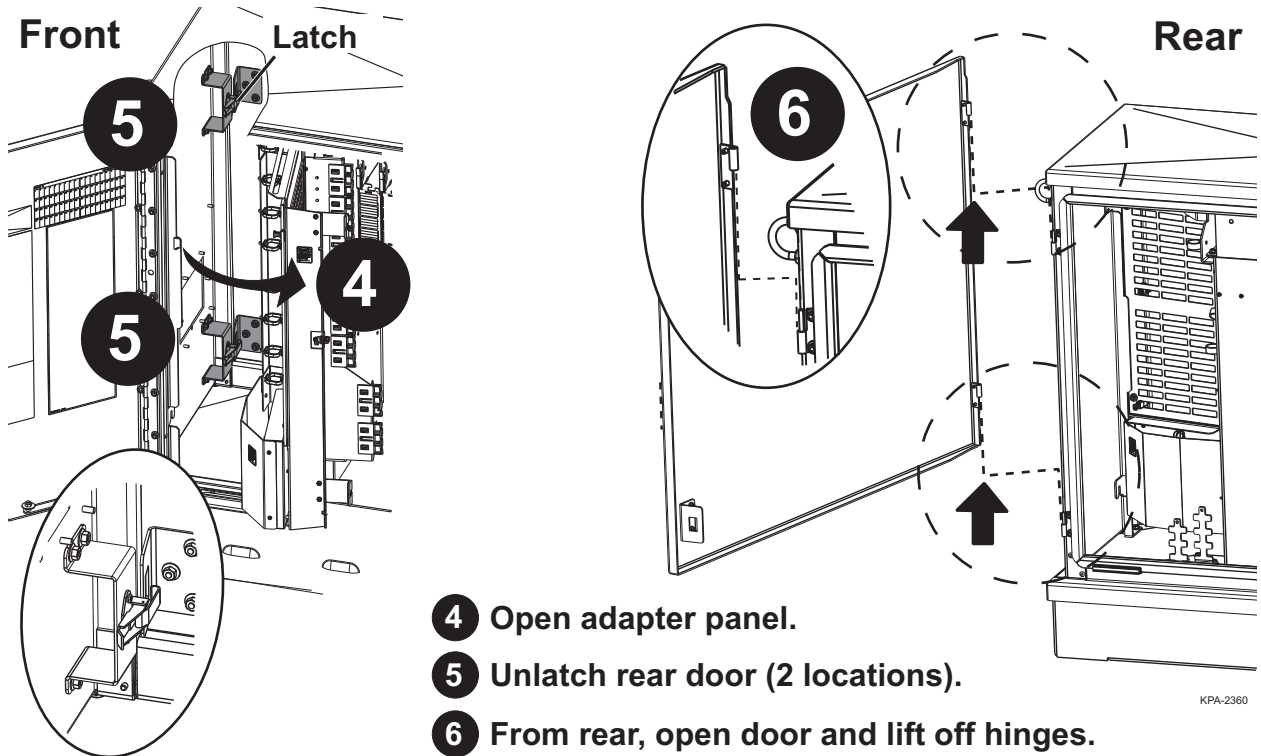
## 3. Installation

For clarity, the illustrations in this document are shown without cable, adapters, connectors, and jumpers.

### 3.1 Remove Rear Door



- 1** Unlock doors.
- 2** Open doors until stop engages.
- 3** Unlatch left adapter panel.

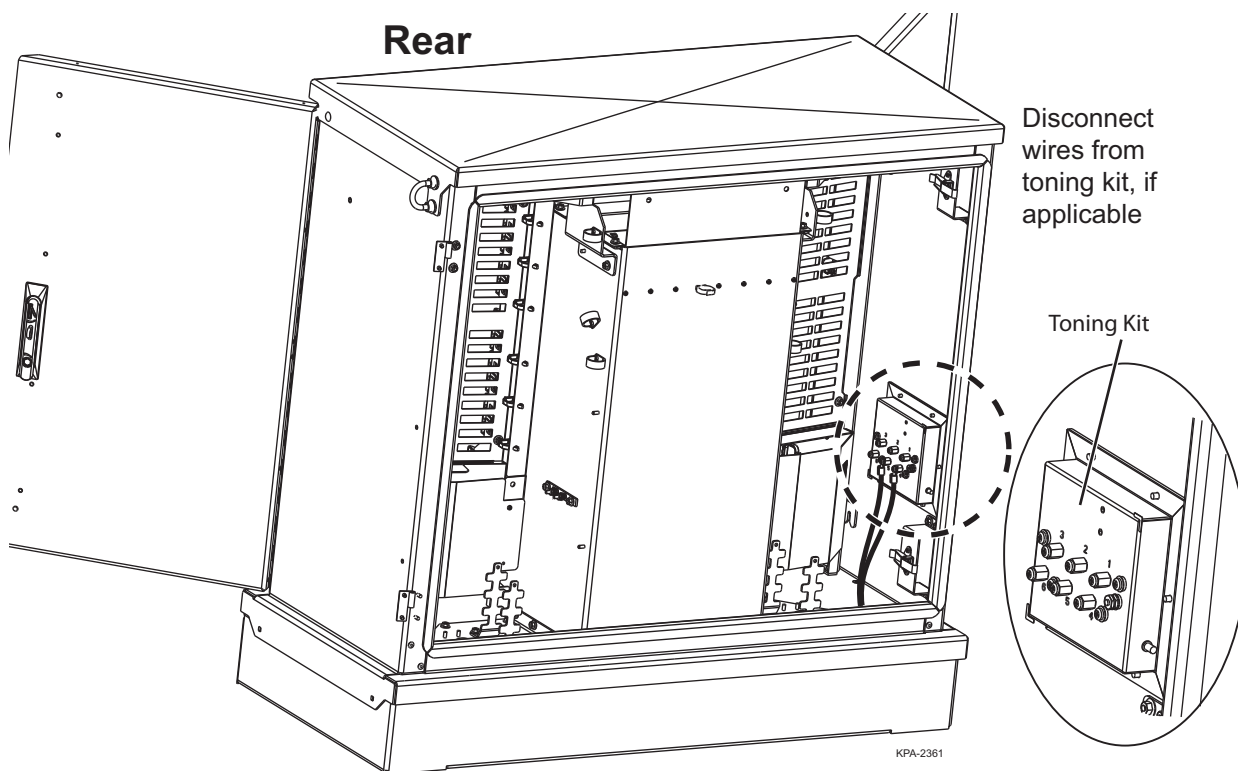


- 4** Open adapter panel.
- 5** Unlatch rear door (2 locations).
- 6** From rear, open door and lift off hinges.

### 3.2 Disconnect Toning Kit

**Step 1:** Identify each wire numbered 1 to 6 to match to correct location for reassembly.

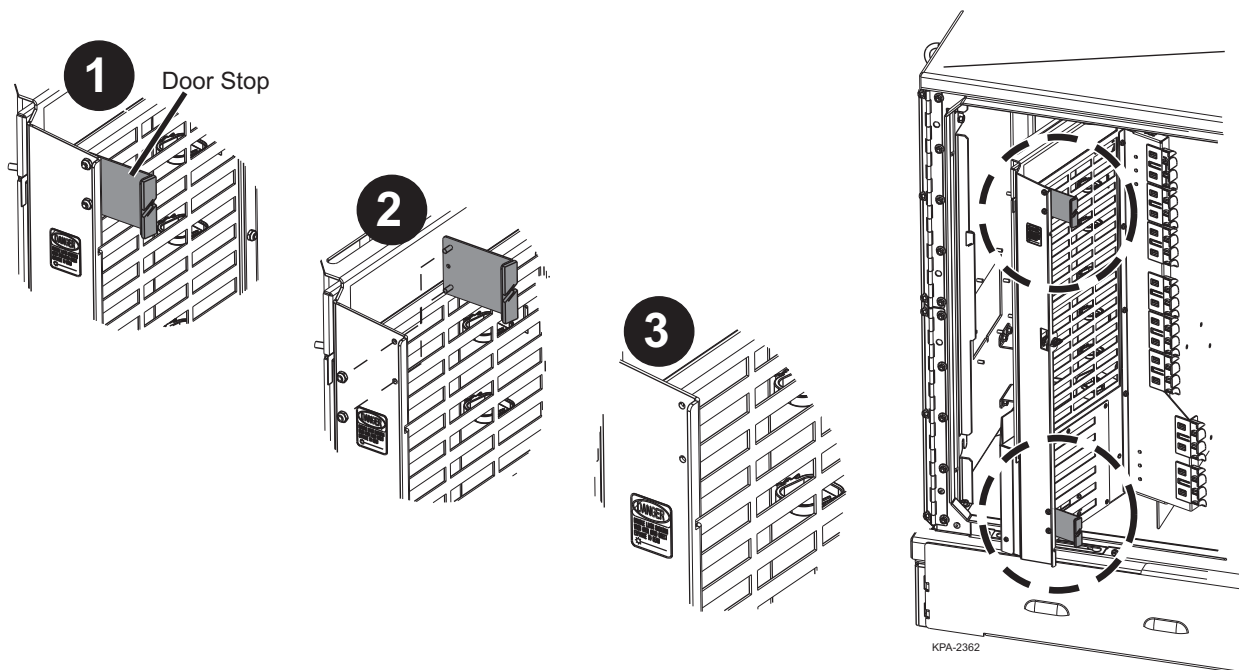
**Step 2:** Using a #2 Phillips-head screwdriver, disconnect all wires from the toning kit.



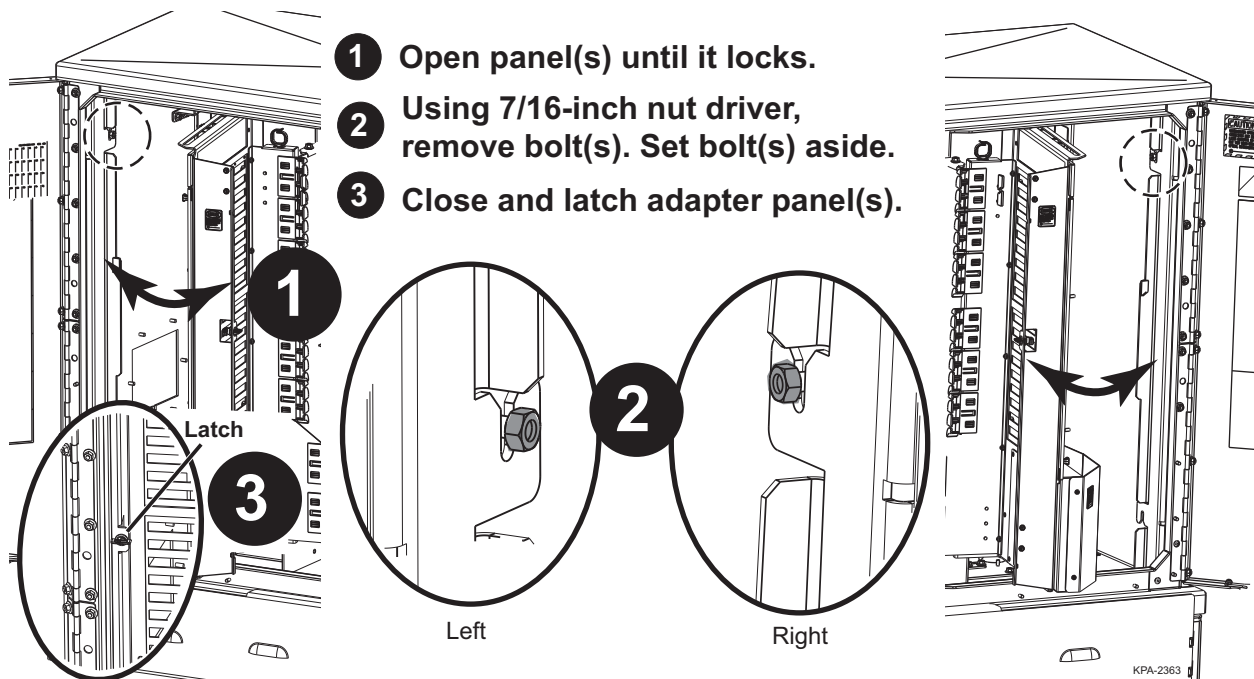
### 3.3 Remove Adapter Panel Door Stops

**Step 1:** Unlatch adapter panel(s) as shown in Section 3.1 and open the panel(s).

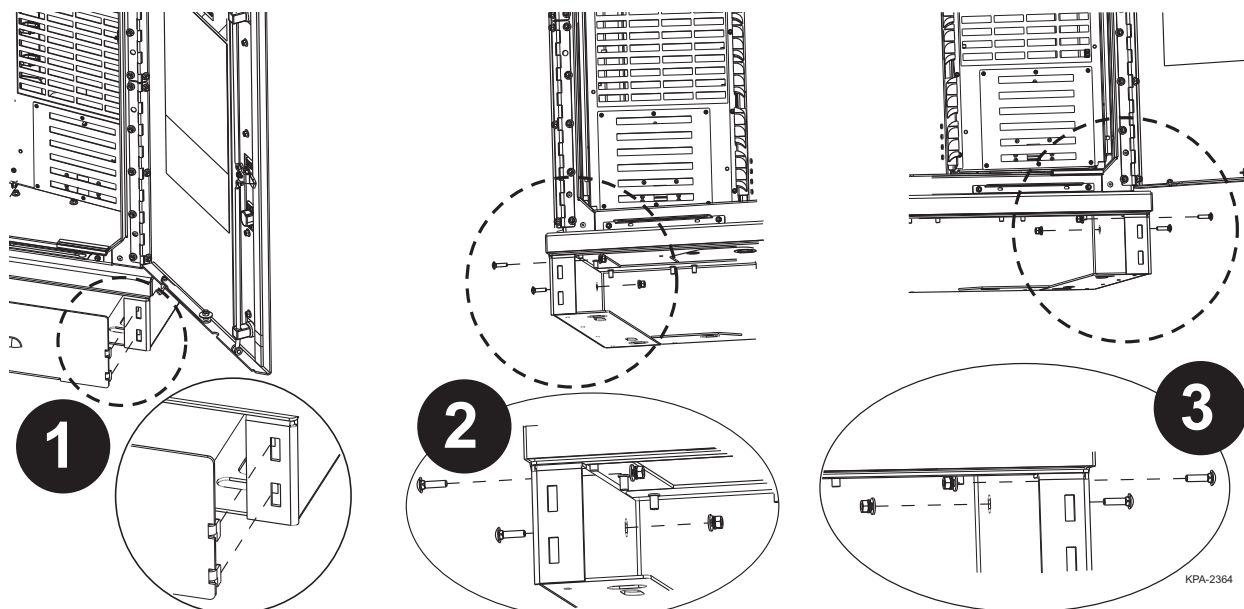
**Step 2:** Using a 5/16-inch nut driver, remove the door stop(s). Set them aside to reinstall after the shell has been replaced.



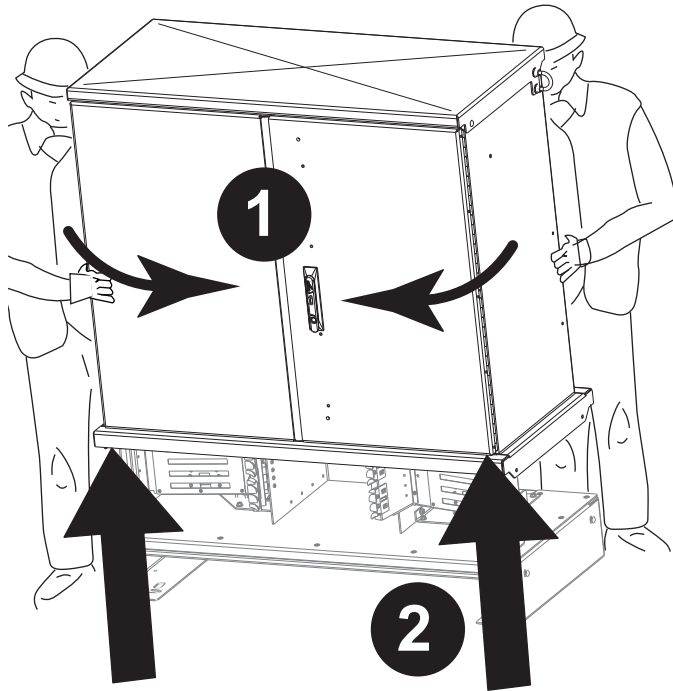
### 3.4 Unbolt Side Channel from Shell



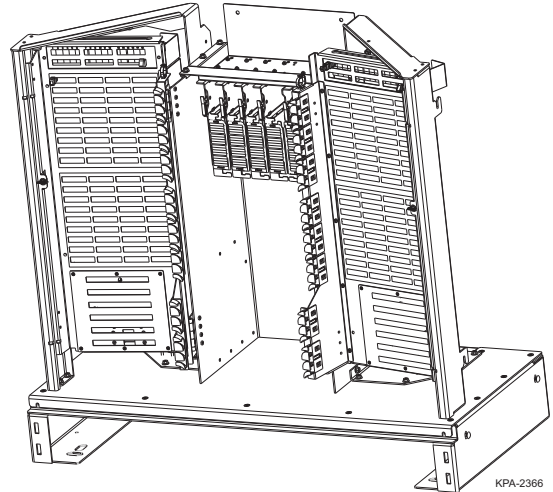
### 3.5 Unbolt Shell from Skirt



### 3.6 Remove the Shell

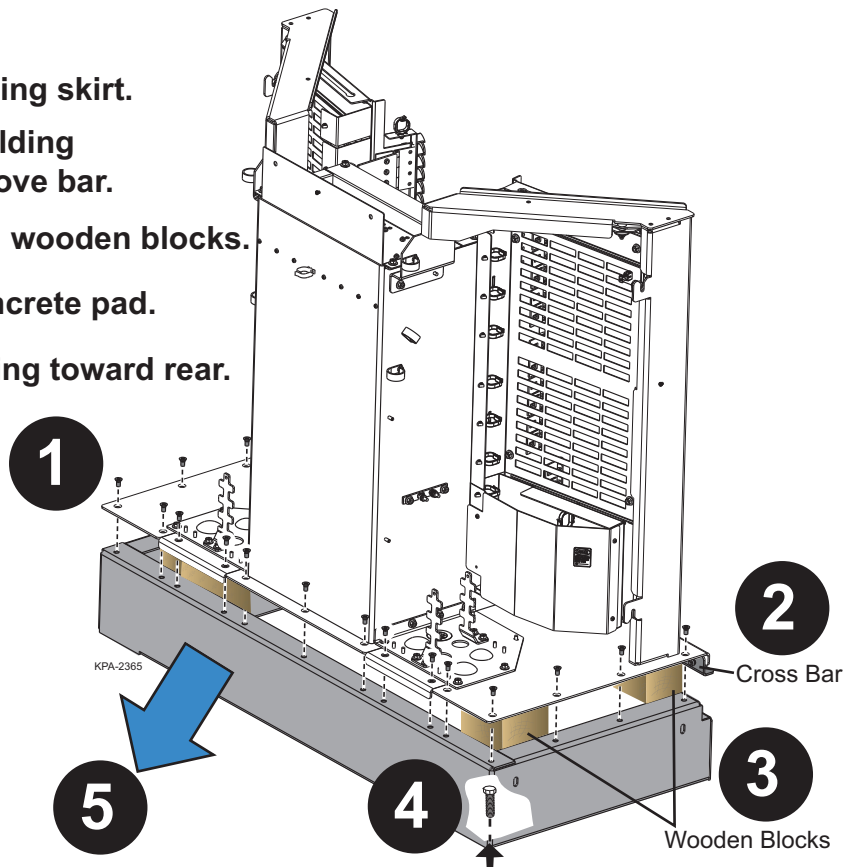


- 1 Close and lock front door(s).
- 2 Using two people, lift the shell straight up off the unit.



### 3.7 Remove Skirt, when Necessary

- 1 Remove screws holding skirt.
- 2 Remove 2 screws holding front cross bar. Remove bar.
- 3 Support the unit with wooden blocks.
- 4 Unbolt skirt from concrete pad.
- 5 Remove skirt by sliding toward rear.



### 3.8 Replace Skirt, when Necessary

- Step 1:** Remove skirt as described in Section 3.7.
- Step 2:** Slide new skirt into position from rear, reversing Step 5 in Section 3.7.
- Step 3:** Following remaining steps from Section 3.7 in reverse order:
  - a) Bolt skirt to concrete pad.
  - b) Remove wooden blocks.
  - c) Reinstall front cross bar with screws previously removed.
  - d) Replace all screws holding unit to skirt.

### 3.9 Replace Shell

- Step 1:** Remove the rear door from the kit.
- Step 2:** Using two people, lift the replacement shell over the unit and slide it down into position by reversing the process shown in Section 3.6.
- Step 3:** Bolt shell to skirt as seen in Section 3.5.
- Step 4:** Bolt shell to side channel (Section 3.4).
- Step 5:** Reinstall door stops onto adapter panels (Section 3.3).
- Step 6:** Attach wires to toning kit, paying attention to the identification number of each wire (Section 3.2).
- Step 7:** Reinstall rear door and push it closed. From front, open front door(s). Open left adapter panel as shown in Section 3.1 and latch rear door.
- Step 8:** Close and latch adapter panel. Close and lock front door(s) with 216B tool.

Corning Cable Systems LLC • PO Box 489 • Hickory, NC 28603-0489 USA  
1-800-743-2671 • FAX +1-828-325-5060 • International +1-828-901-5000 • <http://www.corning.com/cablesystems>

Corning Cable Systems reserves the right to improve, enhance, and modify the features and specifications of Corning Cable Systems' products without prior notification. All trademarks are the properties of their respective owners. Corning Cable Systems is ISO 9001 certified.  
© 2009-2010 Corning Cable Systems. All rights reserved. Published in the USA.