

Private network system for IoT Animal Tracking System **ANIMAL MAP**

ANIMAL MAP is a private network system to monitor and track the position and collect sensor data of wild animals wearing the GPS collar transmitter by your PC or Smartphone sitting in your desk.

The system consists of a GPS collar (GLT-02 and GLT-03) worn by the wild animal, along with base station (AM-01) serving as a concentrator and gateway, network server (ANIMAL MAP server) and PC or Smartphone.

To build the ANIMAL MAP network, you install the base station where you expect the radio wave emitted from the GPS collar of the targeted wild animal to be received. The base station communicates with the GPS collars using VHF (142MHz band in Japan) and collects the location and sensor data which are transmitted to the cloud server (ANIMAL MAP server) through 3G (such as GSM). Such location and sensor data is available on the browser and can be monitored anywhere from your PC or Smartphone.



GLT-02
GPS collar for macaque

AM-01
ANIMAL MAP base station

PC , Tablet , Smartphone

GLT-03
GPS collar for deer

ANIMAL MAP and its system (hardware and software) are designed for the Japanese domestic market. It uses 142MHz that complies with the Japanese radio regulation. If you are interested in the system for use in your own country, please contact us.

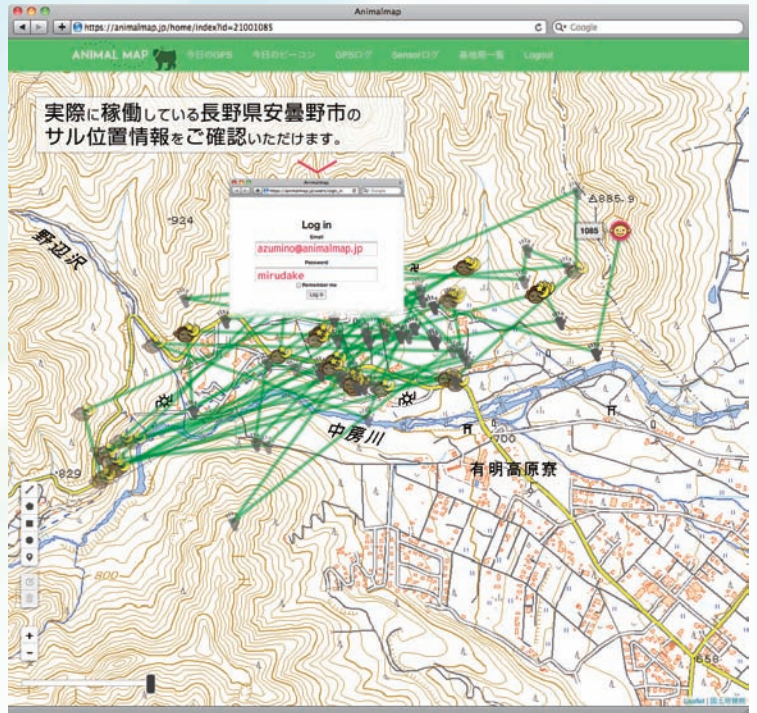
ANIMAL MAP demonstration

You can monitor the ANIMAL MAP. You can see the latest location and tracking log of a macaque living in the forest around CIRCUIT DESIGN's office in Hotaka, Nagano Japan.



Name : azumino@animalmap.jp
Password : mirudake

www.tracking21.jp/products/animalmap/animalmap.html



ANIMAL MAP base station AM-01

Specifications

Item	Specifications
Applicable radio regulation	ARIB STD-T99
Frequency	CH-1 : 142.94MHz, CH-2 : 142.95MHz CH-3 : 142.96MHz, CH-4 : 142.97MHz CH-5 : 142.98MHz
RF output power	100 mW
Operation range	4 km in the line of sight
Radio link to the cloud	3G
Antenna to communicate with GPS collar (VHF)	Gain 6.5 dB (144MHz) 2.9 m
Battery	38Ah, minimum operation for 10 days without solar charging
Solar cell	Single crystal silicon type Maximum nominal output 36 W (Module temp 25C, AM1.5, Radiation illuminance 1kW/m ²)
Weight	26.5 kg including antenna
Dimensions	125.5 x 66 x 60 cm without antenna

External view and dimensions (ANIMAL MAP base station)

