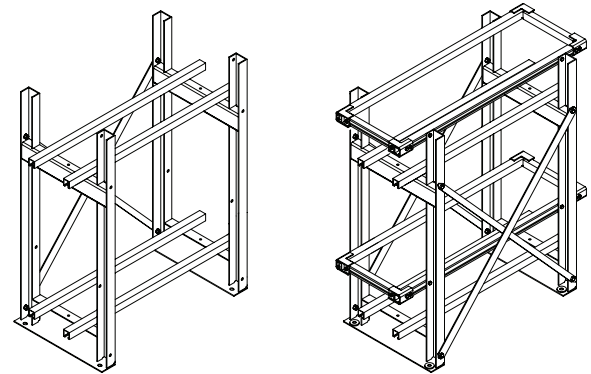


STANDBY BATTERY RACK ASSEMBLY INSTRUCTIONS

APPLIES TO ALL RDC SERIES RACKS

(READ ALL INSTRUCTIONS PRIOR TO INSTALLATION)

These instructions detail the proper procedure for installing C&D Standard and EP (Earthquake Protected) battery racks. The following describes how to locate, assemble, and load open-frame battery racks for C&D battery mounting applications. Proper attention to these instructions will help ensure safe, trouble-free performance.



Two Tier Standard Rack

Two Tier EP Rack

Figure 1. Standard Vs. EP Rack

Standard and Earthquake-Protected (EP) Racks:

Earthquake-protected racks are similar to standard racks, with the exception of additional frame bracing, battery restraints, and cell spacer elements. The battery rack frames are common for Standard, EP1 and EP2 series for the one-tier, two-tier, three-tier and two-step racks with the exception of the three-tier EP2 rack. The frame for the three-tier EP2 rack is unique. RDC-EP racks are certified to the International Building Code, 2009 edition.

Configuration:

Racks are available in single or multiple tier/step configurations as shown in Figure 2. Rack components are supplied loose and must be assembled and secured on-site in accordance with these C&D assembly instructions, the drawings included with the rack shipment, and applicable codes.

Rack Location:

Locate racks in a clean, cool, dry place so the batteries are not affected by sources of radiant heat, such as sunshine, heating units, radiators, steam pipes, etc. Variations of more than 5 degrees Fahrenheit (3° C) between cells may cause the battery to become electrically unbalanced. Top rows of batteries in multiple-tier configurations tend to operate at slightly higher temperature than those on lower tiers. Always provide adequate ceiling clearance for ventilation and maintenance.

Anchoring:

To provide stability and safety, racks must be securely anchored to the floor. Anchor bolts are to be installed per contractor specifications and in accordance with applicable codes. Do not attach rack to walls without consulting the appropriate structural engineer. Mounting holes are provided in the base of each frame. All frames must be secured to floor using all anchor bolt hole locations.

Grounding:

Rack grounding provisions are integrated into the base of each frame. Two through holes are located at the center of the frame's bottom cross member and may be used to secure a standard NEMA lug. These holes are 0.44" in diameter and 1.0" between centers. The surfaces surrounding the holes have been masked and are free of powder coat to allow electrical contact. Frame to frame grounding integrity is accomplished via the lower support rail, attached to each frame with internal/external "star" washers.

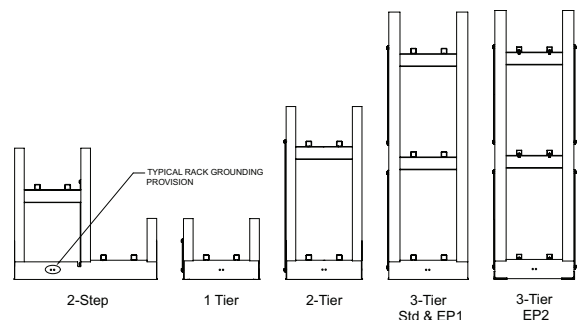


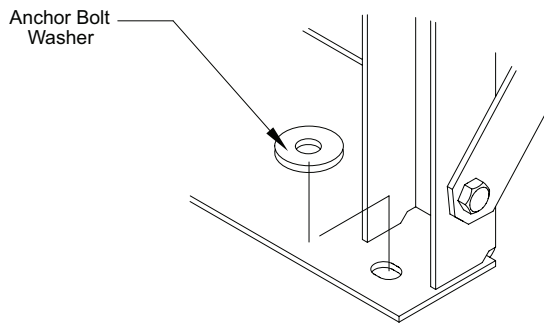
Figure 2. Typical Rack Configurations

CAUTION:

- Do not install batteries until the rack has been properly installed, with all bolts tightened to specified torque and frames anchored to the floor.
- Do not use oil or grease as a lubricant for cell installation. Lubrication is usually not required due to the low friction interface of the insulating covers. If necessary, a small amount of water, unscented talcum or Dow Corning III can be applied to the rail covers to reduce friction.

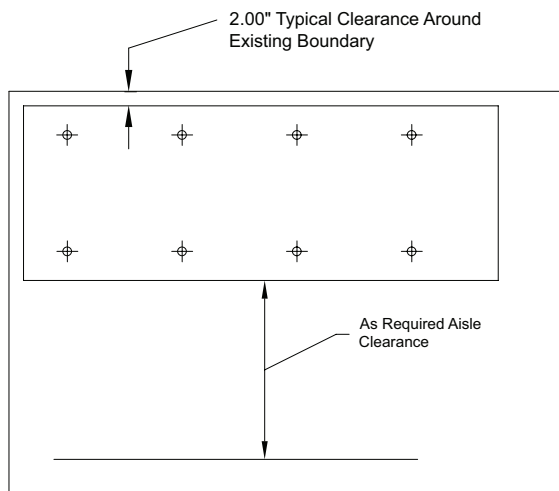
ASSEMBLY INSTRUCTIONS FOR RDC STANDARD AND EP RACKS

1. **Material Verification:** Battery racks are shipped unassembled with a complete set of related drawings and documentation. Check received parts and quantities against the rack's bill of materials on provided drawings and/or packing list. Do not assemble rack if parts are missing or quantities are incomplete.
2. **Required Tools:** Torque wrench (0 to 65 ft.-lb.) with 9/16" and 3/4" hex socket. Adjustable wrench or 9/16" and 3/4" box wrenches, tape measure, square and leveling device. Note: Consult manufacturer's instructions for tools required to install floor mounting hardware.
3. **Location of Rack Assembly:** When determining rack location and floor anchoring pattern, use applicable drawings provided with rack shipment. The optional arrangement drawing, if ordered, should also be reviewed for rack and battery cell placement. Consider boundaries and aisle clearances when locating the general position of the rack.
4. **Initial Assembly:** Anchor bolt washers (P/N RD05084 or RD05100 for three tier racks) are supplied with the EP racks. Each washer should be placed against the rack frame (see Detail A). Place frames over the installed floor mounting hardware, place the anchor bolt washers, and finger tighten floor mounting hardware. All frames must face the same direction. Install rear cross braces finger tight. See Figure 4 and Detail B. Do not install front cross braces at this time (if required). Note: Cross bracing is used in all rear bays for EP1 racks (except for 2 step racks) and in all front and rear bays for EP2 racks. Reference the rack assembly drawings included in shipment for further details of the cross bracing pattern and location for your specific rack model.



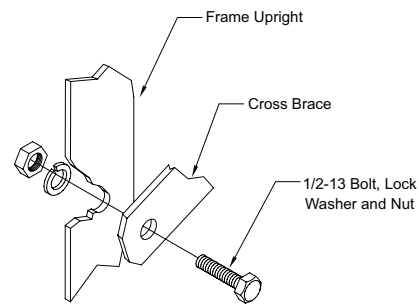
Anchor Bolt Washer Installation

DETAIL A



Rack Assembly Location and Anchoring Hole Pattern

FIGURE 3



Brace to Frame connection (Reverse View)

DETAIL B

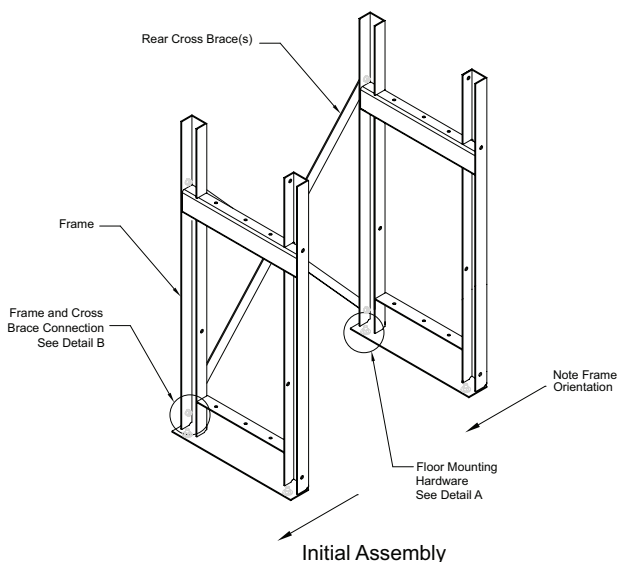


FIGURE 4

ASSEMBLY INSTRUCTIONS FOR RDC STANDARD AND EP RACKS

5. **Installing Support Rail(s):** See Figure 5. Place support rail(s) in location using supplied 3/8" bolt, washer, serrated strut nut and finger tighten (see Detail C). Align support rails with "A" dimension from rack assembly drawing (See Detail D) and install rail covers. Note: An internal/external "star" washer is used in place of the lock washer on the bottom tier or step for grounding connection. Optional third rail should be installed at this time.

For rack lengths greater than 20 ft, the rails come in two sections and are to be joined with a rail splice kit (P/N RE05149 (See Figure 6). The rail lengths have been sized to ensure that the joint occurs near the middle of the span between two frames.

6. **Leveling:** Check that the rack is level and square. Torque down all bolts. First torque the cross brace bolts to 55-65 ft.-lb. [75-88 N-m], then torque the rail to frame bolts to 15-20 ft.-lbs [20-27 N-m]. Torque anchor bolts to manufacturer's recommended value.

This concludes the steps required to install a C&D Standard Rack, please proceed to step 8 for cell installation or if you are installing an EP Rack, continue on to step 7.

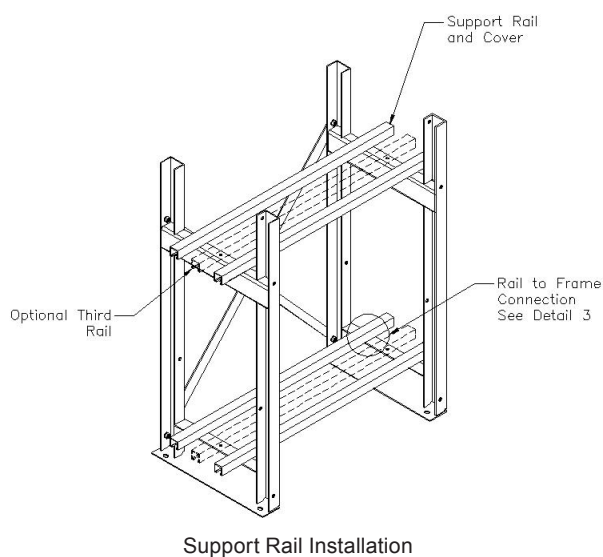
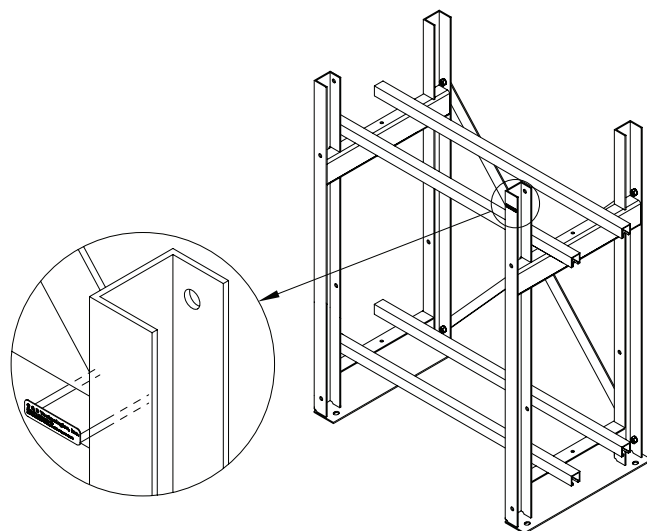
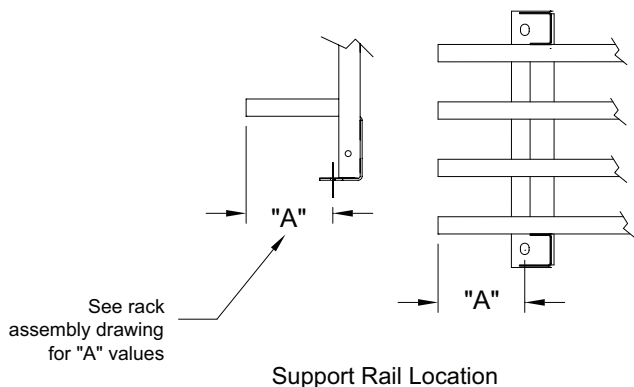


FIGURE 5



DETAIL C



DETAIL D

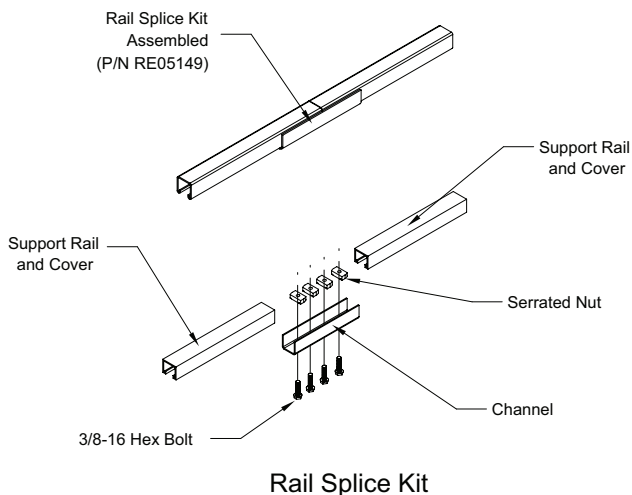


FIGURE 6

Rail covers are supplied in 3' and 4' lengths. Rail covers are to be placed end to end over the entire rail length.

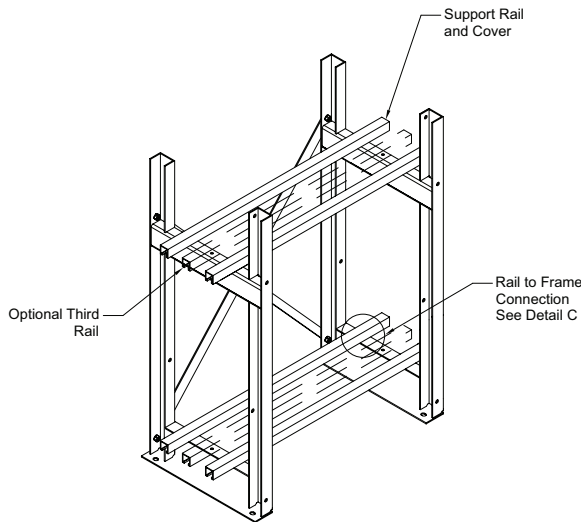
ASSEMBLY INSTRUCTIONS FOR RDC STANDARD AND EP RACKS

7. **EP Rack Assembly:** Install all back restraint rail(s) and cover(s). See Figure 7 and Detail E for hardware details. Position front restraint rail and cover temporarily next to front support rail prior to installing cells. See step 10 for information on corner brackets.

If the battery row is shorter than the rack so that the end rail falls within a frame, the corner bracket must be placed on the side rail and slid within the frame (See Figure 10)

8. **Cell Installation Procedure:** Optional arrangement drawing if ordered, should be reviewed for cell placement. If not instructed otherwise, install cells starting at the center of the bottom row and work out towards each end leaving a half inch space between cells. For EP racks, use cell spacers between cells as supplied (see Detail F). Do not use oil or

grease as lubricants. A small amount of water, unscented talcum or Dow Corning III may be applied to the rail cover to help reduce friction. For rows having an odd number of batteries, the center of the first battery installed will match the center of the row. For rows having an even number of batteries, a cell space will coincide with the center of the row. Pay attention to polarities and terminal placement. Refer to the battery's Installation and Operating Instruction manual (RS-1476) for more details. All cells mounted on seismic racks should be pushed back against back restraint rail and cover. Up to an 1/8" gap between the restraint rail and cell jar wall is acceptable. Repeat this procedure for remaining steps and tiers, working upward. See Figure 8.



Support Rail Installation

FIGURE 7

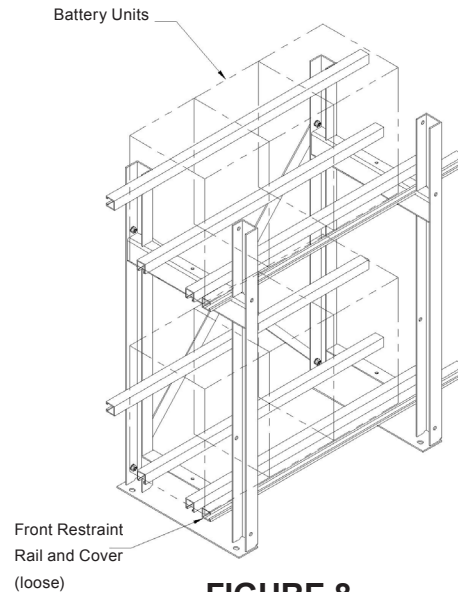
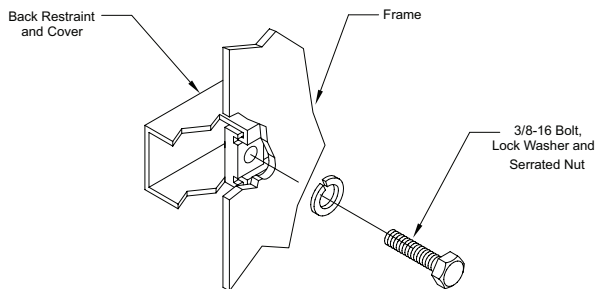
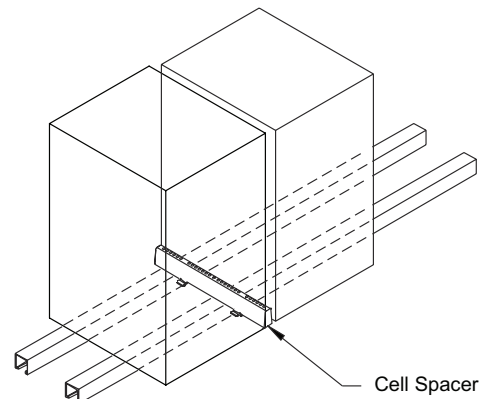


FIGURE 8



Frame and Restraint Rail(s)
(Reverse View)

DETAIL E



DETAIL F

ASSEMBLY INSTRUCTIONS FOR RDC STANDARD AND EP RACKS

9. **Front Restraint Rail (EP only):** With the batteries in place, slide the front side support rail and cover up from its resting location to its mounting location, aligning with rear side restraint rail. Install hardware and torque to 15-20 ft.-lbs. [20-27 N-m] See Figure 9.
10. **Final Assembly:** Install corner brackets, end restraint rails, and covers. Position end restraint rail against the end battery unit. See Detail G. Note that the corner bracket may be reversed by 180° if required. When the corner bracket

assembly is reversed, the end restraint rail is attached to the opposite side of the corner bracket. When reversed the corner bracket is able to slide inside the frame uprights (See Detail H).

Install all front cross braces if indicated by rack assembly drawing. Torque to 55-65 ft.-lbs. [75-80 N-m] See Figure 11 for final rack assembly.

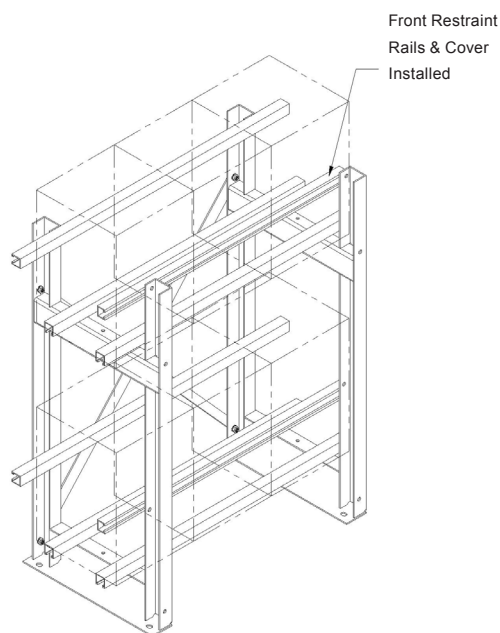
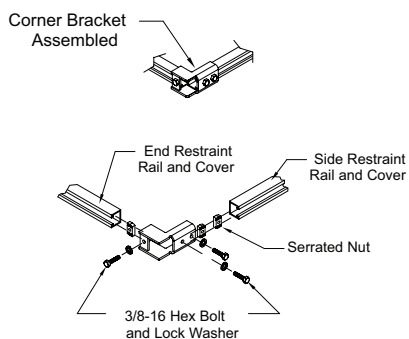
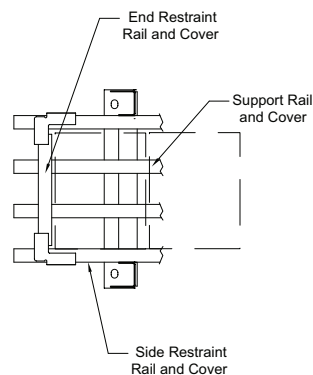


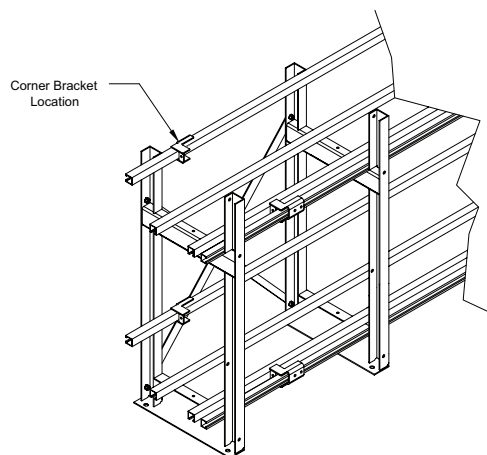
FIGURE 9



**End Rail Restraint Rail(s)
and Corner Brackets**

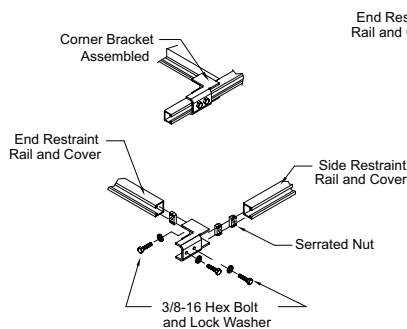


DETAIL G



**Corner Bracket placement when
end restraint rails are within the frame**

FIGURE 10

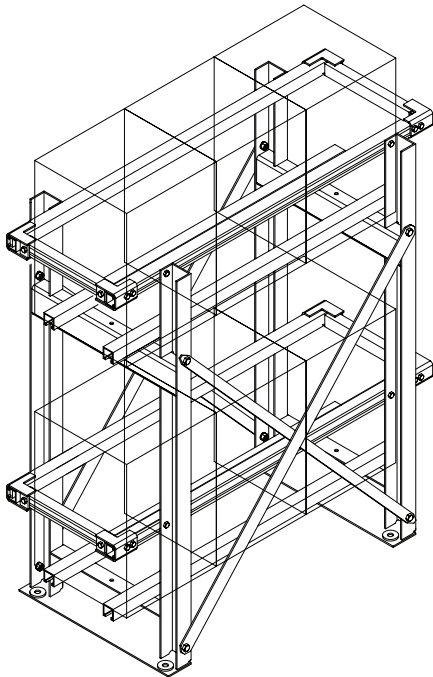


**End Rail Restraint and
Corner Bracket Reversed**

DETAIL H

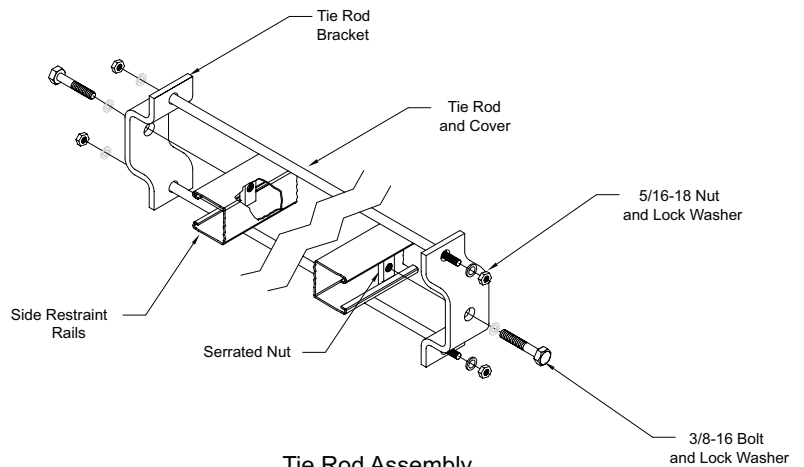
ASSEMBLY INSTRUCTIONS FOR RDC STANDARD AND EP RACKS

11. **Tie Rod Assembly:** Longer EP racks require a tie rod assembly (see rack assembly drawings for details). The tie rod assemblies (P/N RD02320) are to be placed as evenly as possible among the batteries per tier (see figure 12 and figure 13).
12. **Battery Arrangement:** Install inter-cell and inter-unit connectors and cable assemblies as determined by the battery arrangement. Refer to Battery Installation Manual (RS-1476) for more detail on battery connection and initialization charge. Follow Battery Installation Manual RS-1476 for battery installation and operation.



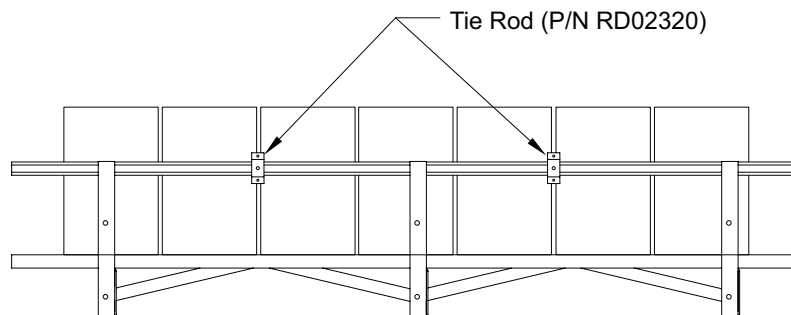
Assembled EP2 Rack
With Corner Brackets and Front Cross Braces

FIGURE 11



Tie Rod Assembly

FIGURE 12



Tie Rod Placement

FIGURE 13

ADDITIONAL INSTRUCTIONS FOR MULTI-RACK ARRANGEMENTS

Back to Back Assembly:

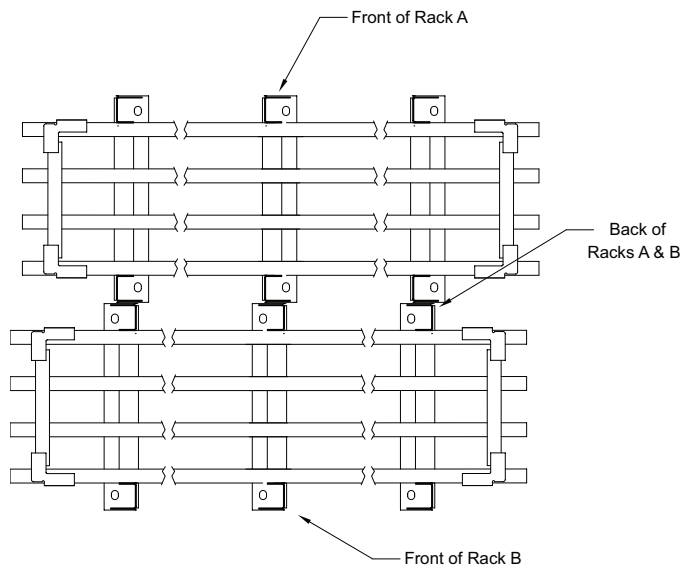
Where two rows of racks are required, two rack assemblies may be installed back to back.

Frame Location:

Locate back to back frames relative to each other as shown in Figure 14, such that the rear cross brace attachment holes align for the two adjoining frames (The frames will be facing opposite directions). All braces must be installed, as described previously, except that a single bolt may be used to connect the front and rear frames and respective cross braces. The ½-13 x 1.50" long bolt supplied with the rack is to be replaced by a ½-13 x 2 ¼" long (supplied with racks).

When placed back to back, there must be enough distance between the frames to allow all of the braces (four total) to be installed. The "X" distance between anchor bolt holes should be as noted in Table 1 (see Figure 15).

Two step standard racks placed back to back do not need to have the frames bolted together. For 2 step EP1 racks a bolt assembly is required (C&D part # REO5253 purchased separately). Contact C&D for more details.



Back to Back Assembly

FIGURE 14

Table 1

RDC Rack	See Figure 15			
	"X" Distance		Anchor Bolt Distance	
	Inches	mm	Inches	mm
1 Tier	3.95	100	4.32	110
2 Tier	3.88	99	4.08	104
2 Step (Std & EP1)	3.63	92	5.67	144
2 Step (EP2)	4.01	102	4.26	108
3 Tier (EP1)	4.64	118	3.88	99
3 Tier (EP2)	4.26	108	4.24	108

The EP racks have anchor bolt slots with a 1.06" x 0.69" (26.9 mm x 17.5 mm) for One Tier and Two Step rack models and a 1.06" x 0.81" (26.9 mm x 20.6 mm) for Two Tier and Three Tier rack models.

The distance between the anchor bolt locations when the racks are placed back to back is shown in Table 1 and Figure 15.

Note: There may be a de-rating of anchor bolt load ratings due to the proximity of holes. Reference anchor bolt manufacturer's data for information.

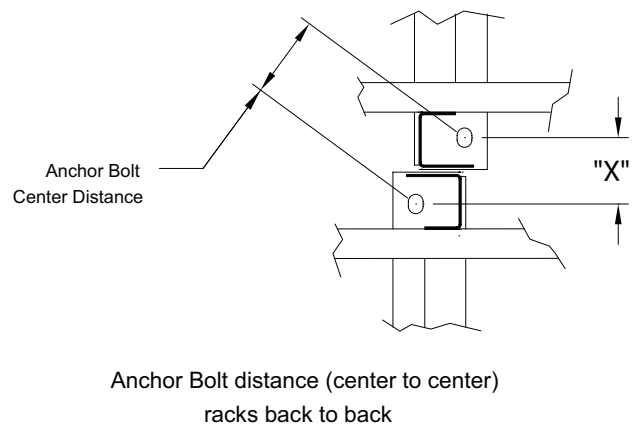


FIGURE 15

NOTE:

Anchor selection is determined by the anchor type, the diameter of the anchor, the depth of embedment and anchor spacing. The selection of the anchor bolt must be reviewed by a structural engineer to ensure that the racks will meet the seismic rating for the EP racks.

ADDITIONAL INSTRUCTIONS FOR MULTI-RACK ARRANGEMENTS

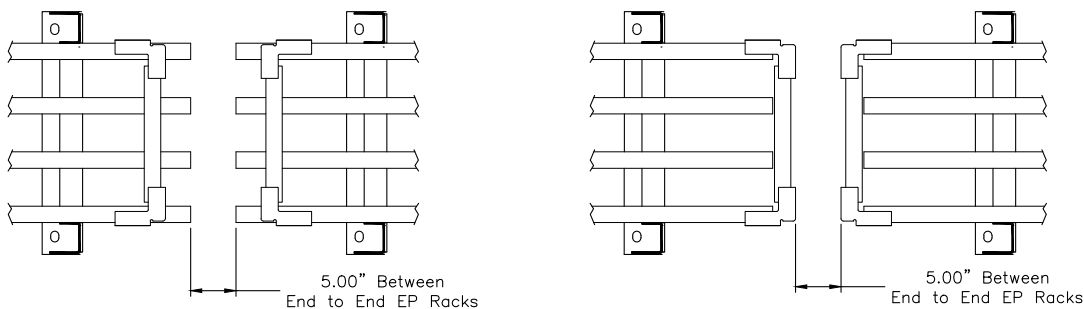
End to End Rack Installation Instructions:

Where a continuous rack string is required, two racks may be installed adjacent in length.

Frame Location:

End to end rack assemblies are installed as two individual, stand-alone rack assemblies as shown. When installing standard racks, there is no minimum clearance between racks (they can be abutted). When installing EP racks the two racks must be spaced apart so that the minimum distance between the ends of the restraint rails is 5". If the support rails are fully packed with cells, the end restraint rails may extend beyond the support rails. In such an instance, the 5" clearance dimension should be applied to the corner brackets. See Figure 16.

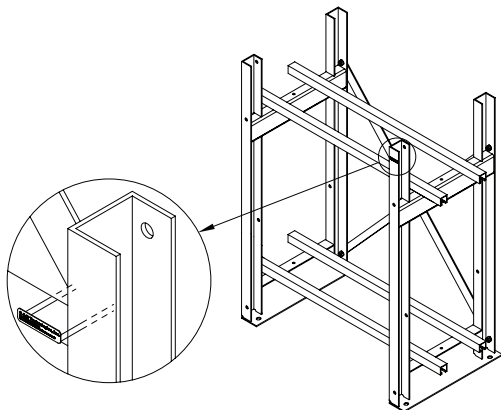
FIGURE 16



End Rail within Support Rails

End Rail beyond Support Rails

End to End Installation



Rack Label Placement

FIGURE 17

RACK LABEL:

Place the IBC certification label (one (1) supplied with rack) on a frame upright. Select a frame upright that is readily viewable. See Figure 17.

TOUCH UP PAINT:

Touch up paint (C&D part number RH00289) is available through separate purchase. Contact C&D rep for more details.

C&D TECHNOLOGIES, INC.

1400 Union Meeting Road
P.O. Box 3053 • Blue Bell, PA 19422-0858
(215) 619-2700 • Fax (215) 619-7899 • (800) 543-8630
customersvc@cdtechno.com
www.cdtechno.com

Any data, descriptions or specifications presented herein are subject to revision by C&D Technologies, Inc. without notice. While such information is believed to be accurate as indicated herein, C&D Technologies, Inc. makes no warranty and hereby disclaims all warranties, express or implied, with regard to the accuracy or completeness of such information. Further, because the product(s) featured herein may be used under conditions beyond its control, C&D Technologies, Inc. hereby disclaims all warranties, either express or implied, concerning the fitness or suitability of such product(s) for any particular use or in any specific application or arising from any course of dealing or usage of trade. The user is solely responsible for determining the suitability of the product(s) featured herein for user's intended purpose and in user's specific application.

Copyright 2014 C&D TECHNOLOGIES, INC. Printed in U.S.A. RS02098 0114/CD