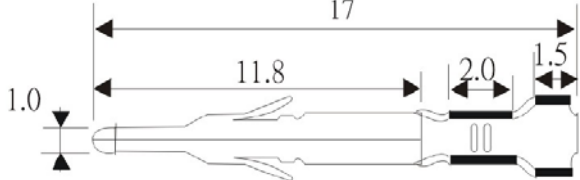


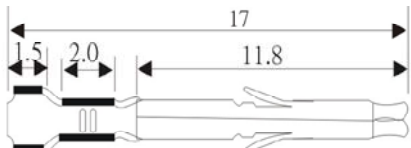
SPECIFICATIONS

Current Rating: 5A AC,DC
 Voltage Rating: 300V AC,DC
 Contact Material: Phosphor Bronze
 Contact Plating: Tin over Gold
 Insulation Material: UL94V-2 Nylon 66
 Insulation Resistance: 1000MΩ min
 Circuits: 1,2,3,4,6,9,12,15
 Tolerance: ±0.3m/m
 Wire Range: AWG 24-18
 O.D. Wire Insulation: 1.5-3.0
 Withstanding: 1500V AC/minute
 Operating Temp: -25°C ~ +90°C

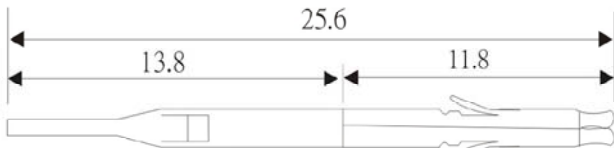
Terminal 66A6



Terminal 66A5



Pc Board



pcs/Ibag
2000

Pc Board Socket

Dimensions				
Circuits	A	B	C	D
2	10.70	6.15	2.50	10.35
3	10.70	6.15	4.60	14.55
4	14.90	10.35	2.50	10.35
6	19.10	14.55	2.50	10.35
9	19.10	14.55	4.60	14.55
12	23.30	18.75	4.60	14.55
15	27.50	22.95	4.60	14.55

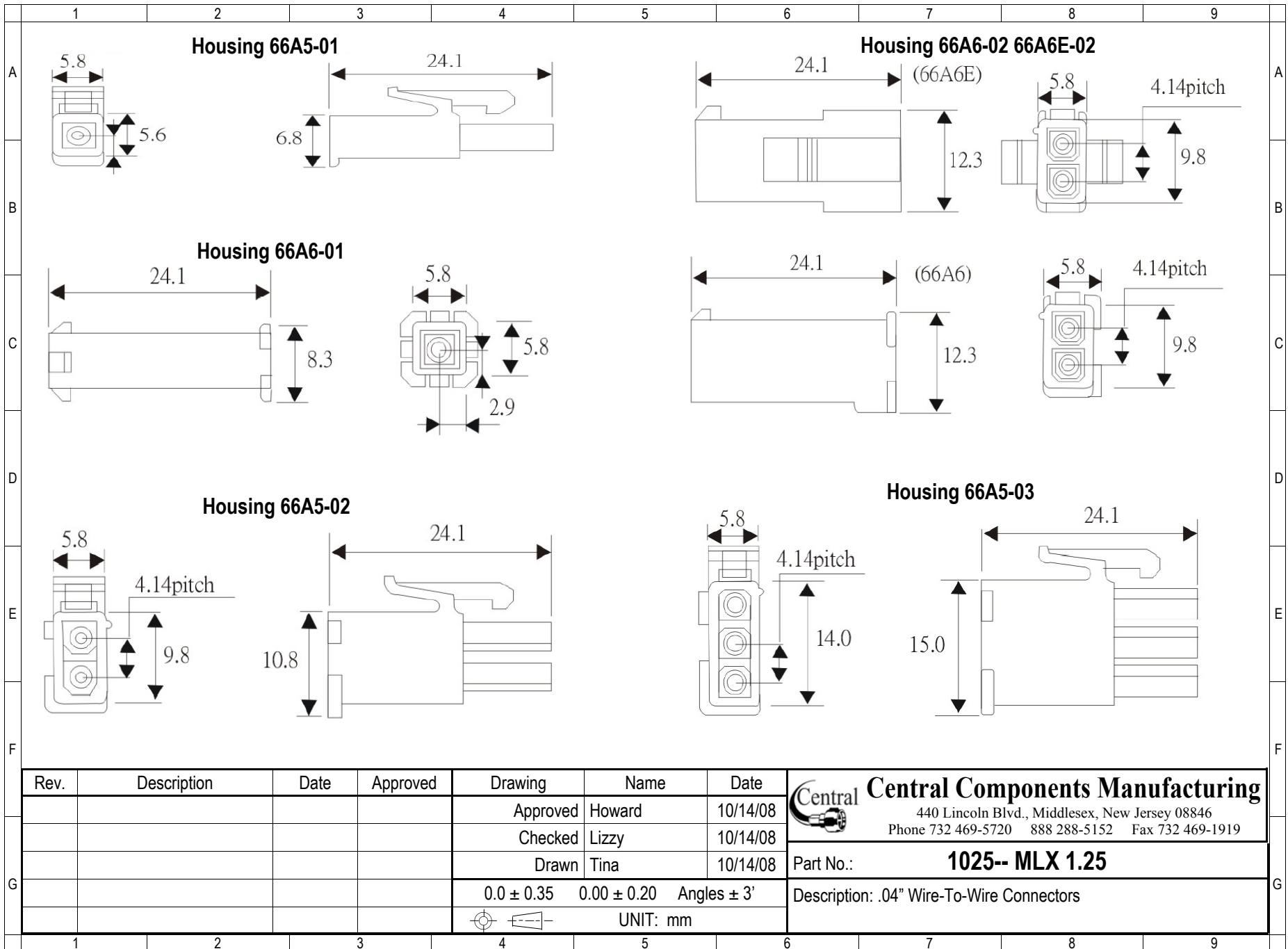
RoHS compliant

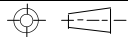
Rev.	Description	Date	Approved	Drawing	Name	Date
				Approved	Howard	10/14/08
				Checked	Lizzy	10/14/08
				Drawn	Tina	10/14/08
				0.0 ± 0.35	0.00 ± 0.20	Angles ± 3'
				UNIT: mm		


Central Components Manufacturing
 440 Lincoln Blvd., Middlesex, New Jersey 08846
 Phone 732 469-5720 888 288-5152 Fax 732 469-1919

Part No.: **1025-- MLX 1.25**

Description: .04" Wire-To-Wire Connectors



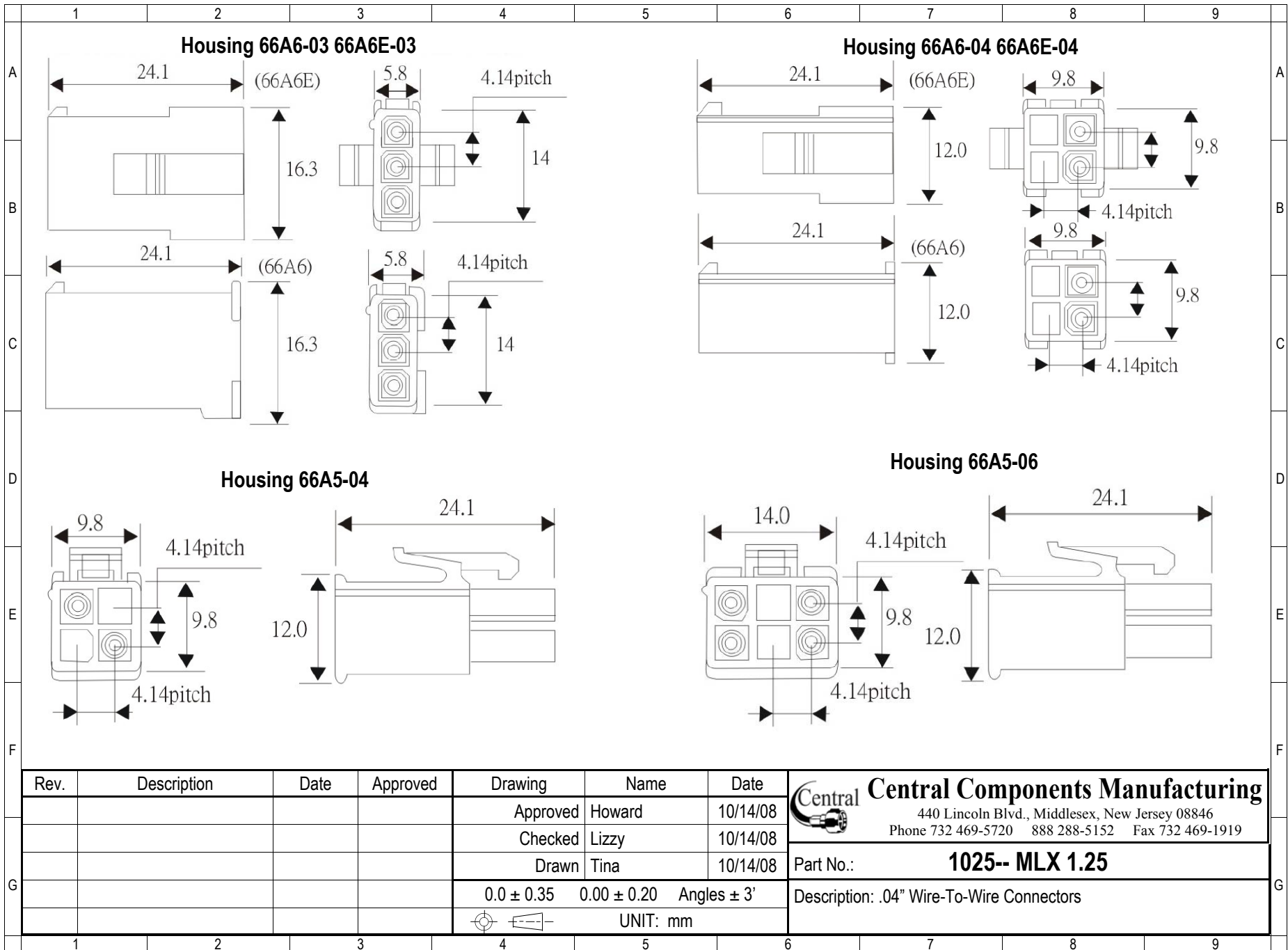
Rev.	Description	Date	Approved	Drawing	Name	Date
				Approved	Howard	10/14/08
				Checked	Lizzy	10/14/08
				Drawn	Tina	10/14/08
				0.0 ± 0.35	0.00 ± 0.20	Angles ± 3'
				 UNIT: mm		



Central Components Manufacturing
 440 Lincoln Blvd., Middlesex, New Jersey 08846
 Phone 732 469-5720 888 288-5152 Fax 732 469-1919

Part No.: **1025-- MLX 1.25**

Description: .04" Wire-To-Wire Connectors

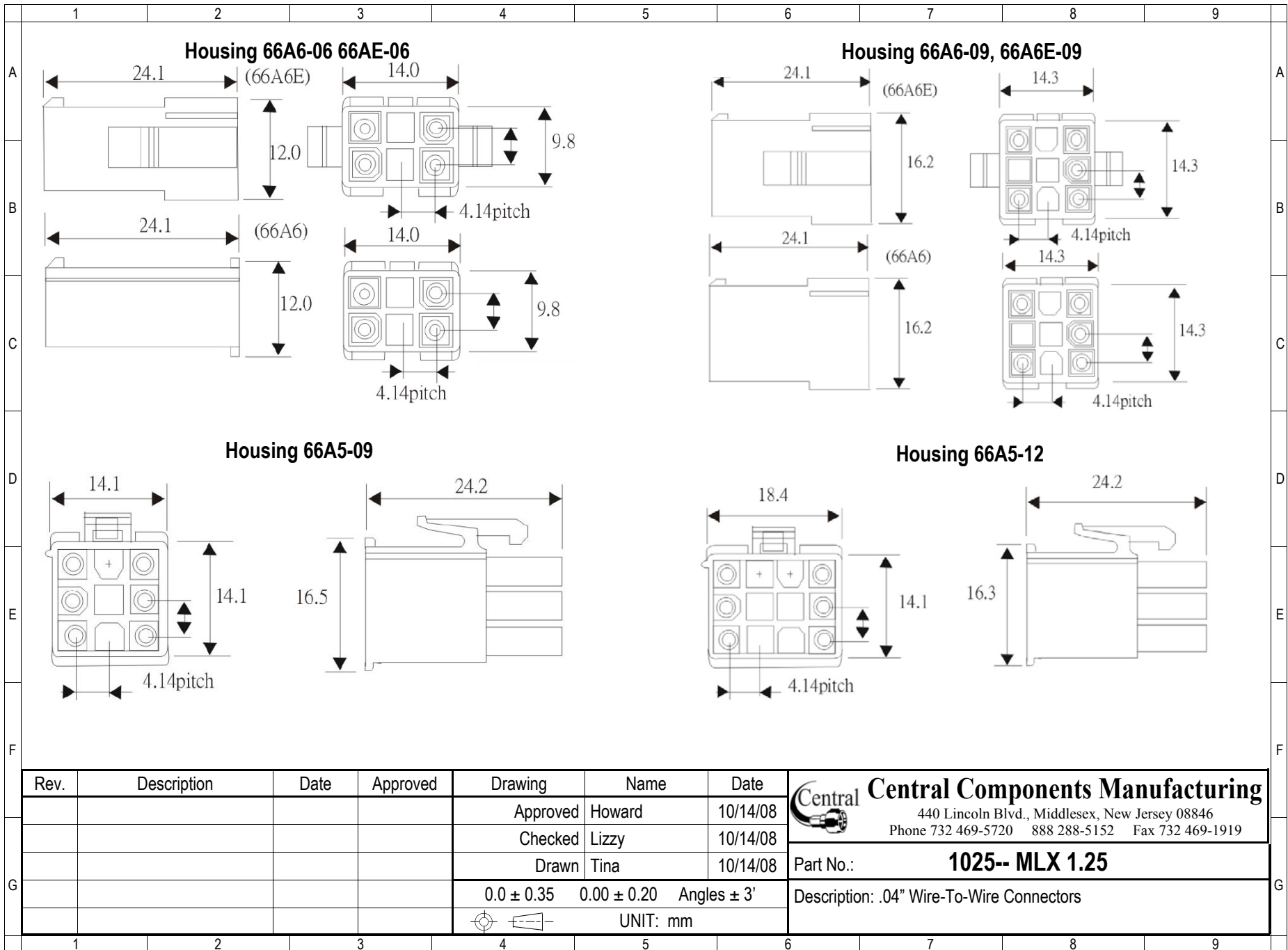


Rev.	Description	Date	Approved	Drawing	Name	Date
				Approved	Howard	10/14/08
				Checked	Lizzy	10/14/08
				Drawn	Tina	10/14/08
				0.0 ± 0.35	0.00 ± 0.20	Angles ± 3'
					UNIT: mm	

Central Components Manufacturing
 440 Lincoln Blvd., Middlesex, New Jersey 08846
 Phone 732 469-5720 888 288-5152 Fax 732 469-1919

Part No.: **1025-- MLX 1.25**

Description: .04" Wire-To-Wire Connectors

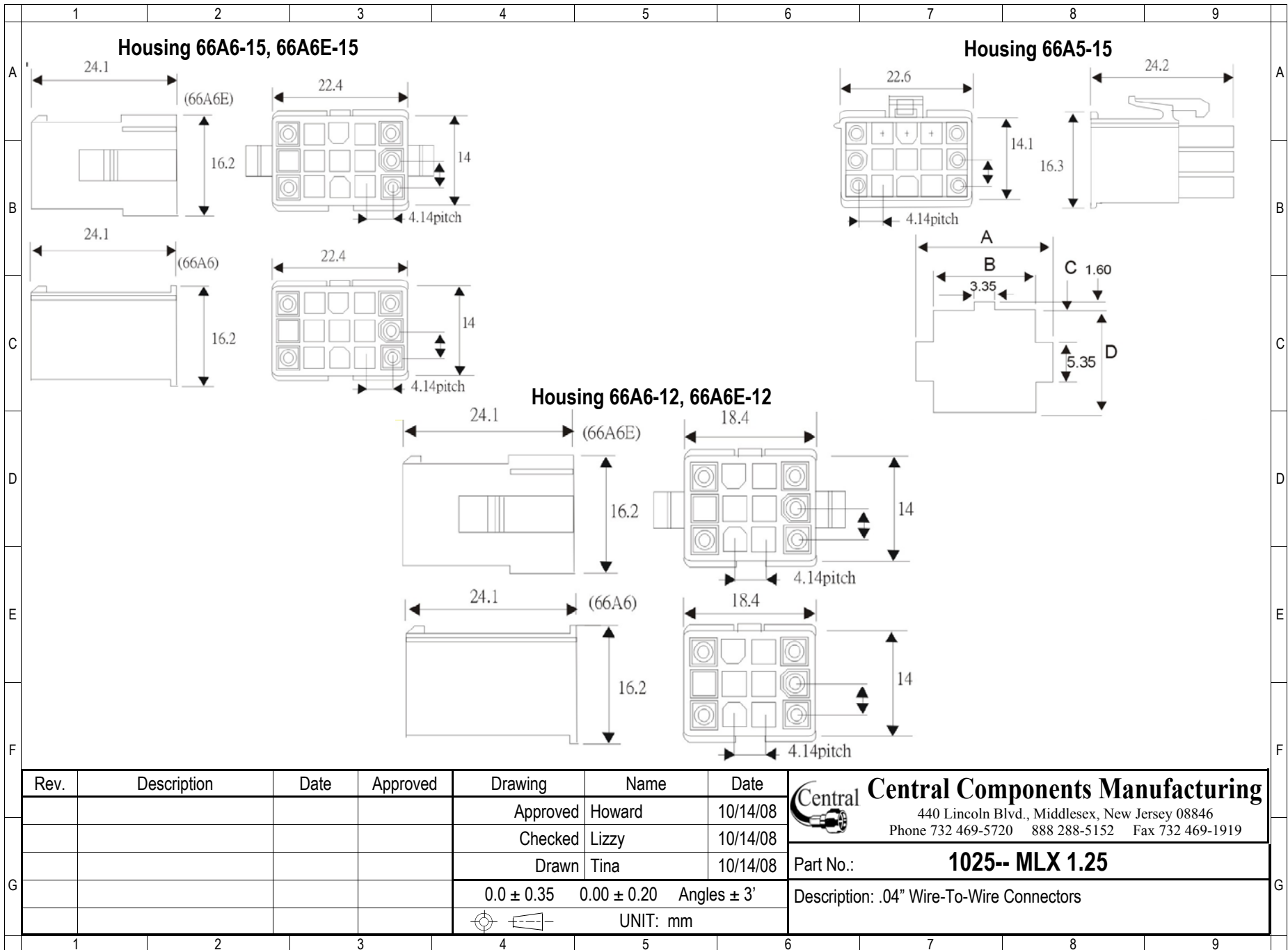


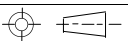

Rev.	Description	Date	Approved	Drawing	Name	Date
				Approved	Howard	10/14/08
				Checked	Lizzy	10/14/08
				Drawn	Tina	10/14/08
				0.0 ± 0.35	0.00 ± 0.20	Angles ± 3'
				 UNIT: mm		

Central Components Manufacturing
 440 Lincoln Blvd., Middlesex, New Jersey 08846
 Phone 732 469-5720 888 288-5152 Fax 732 469-1919

Part No.: **1025-- MLX 1.25**

Description: .04" Wire-To-Wire Connectors



Rev.	Description	Date	Approved	Drawing	Name	Date
				Approved	Howard	10/14/08
				Checked	Lizzy	10/14/08
				Drawn	Tina	10/14/08
				0.0 ± 0.35	0.00 ± 0.20	Angles ± 3'
				 UNIT: mm		
						 Central Components Manufacturing 440 Lincoln Blvd., Middlesex, New Jersey 08846 Phone 732 469-5720 888 288-5152 Fax 732 469-1919
						Part No.: 1025-- MLX 1.25
						Description: .04" Wire-To-Wire Connectors