

SPECIFICATIONS

Current Rating:	5A AC,DC
Voltage Rating:	300V AC,DC
Circuits:	1,2,3,4,6,9,12,15
Insulation Material:	UL94V-2 Nylon 66
Insulation Resistance:	1000MΩ min
Wire Range:	AWG 24-18
O.D. of Wire Insulation:	1.5-3.0
Material:	Phosphor Bronze
Plating:	Tin over Gold flash
Withstanding:	1500V AC/min
Tolerance:	±0.3 m/m
Operating Temp:	-25°C ~ +90°C

Dimensions				
Circuits	A	B	C	D
2	10.70	6.15	2.50	10.35
3	10.70	6.15	4.60	14.55
4	14.90	10.35	2.50	10.35
6	19.10	14.55	2.50	10.35
9	19.10	14.55	4.60	14.55
12	23.30	18.75	4.60	14.55
15	27.50	22.95	4.60	14.55

Pc Board

RoHS compliant

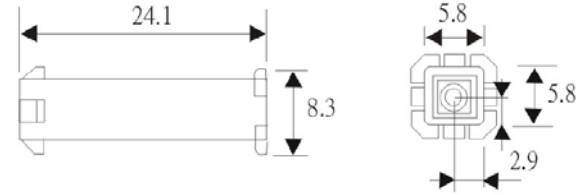
Rev.	Description	Date	Approved	Drawing	Name	Date
				Approved	Howard	10/14/08
				Checked	Lizzy	10/14/08
				Drawn	Tina	10/14/08
				0.0 ± 0.35	0.00 ± 0.20	Angles ± 3'
					UNIT: mm	

Central Components Manufacturing
 440 Lincoln Blvd., Middlesex, New Jersey 08846
 Phone 732 469-5720 888 288-5152 Fax 732 469-1919

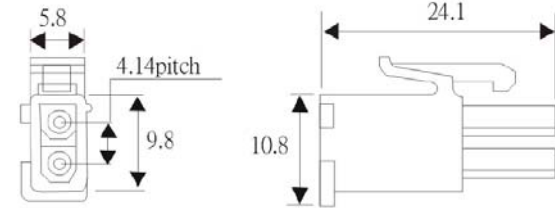
Part No.: **1250-XX MOLEX 1.25 HSG**

Description: .04" Wire-to-Wire Connectors

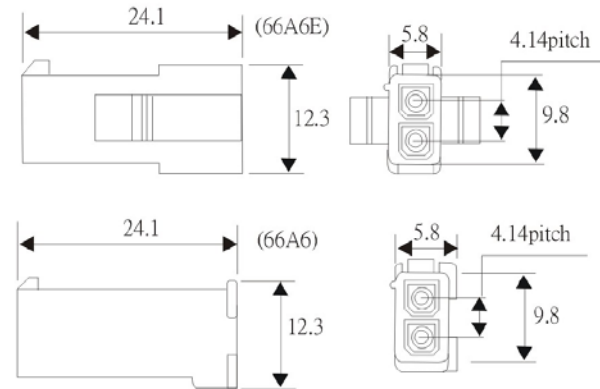
Housing 66A6-01



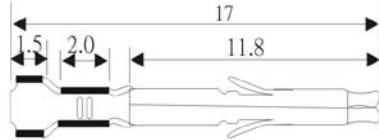
Housing 66A5-02



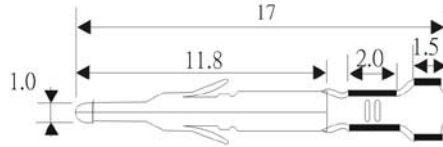
Housing 66-A6-02 66AE-02



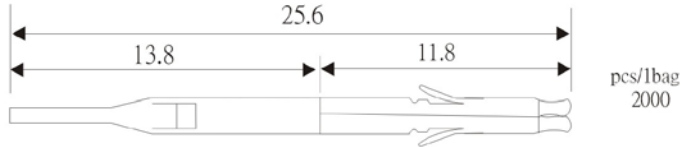
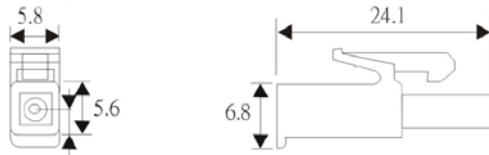
Terminal 66A5



Terminal 66A6



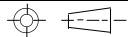
Housing 66A5-01



Pc Board Socket

pcs/lbag
2000

RoHS compliant

Rev.	Description	Date	Approved	Drawing	Name	Date
				Approved	Howard	10/14/08
				Checked	Lizzy	10/14/08
				Drawn	Tina	10/14/08
				0.0 ± 0.35	0.00 ± 0.20	Angles ± 3'
				 UNIT: mm		

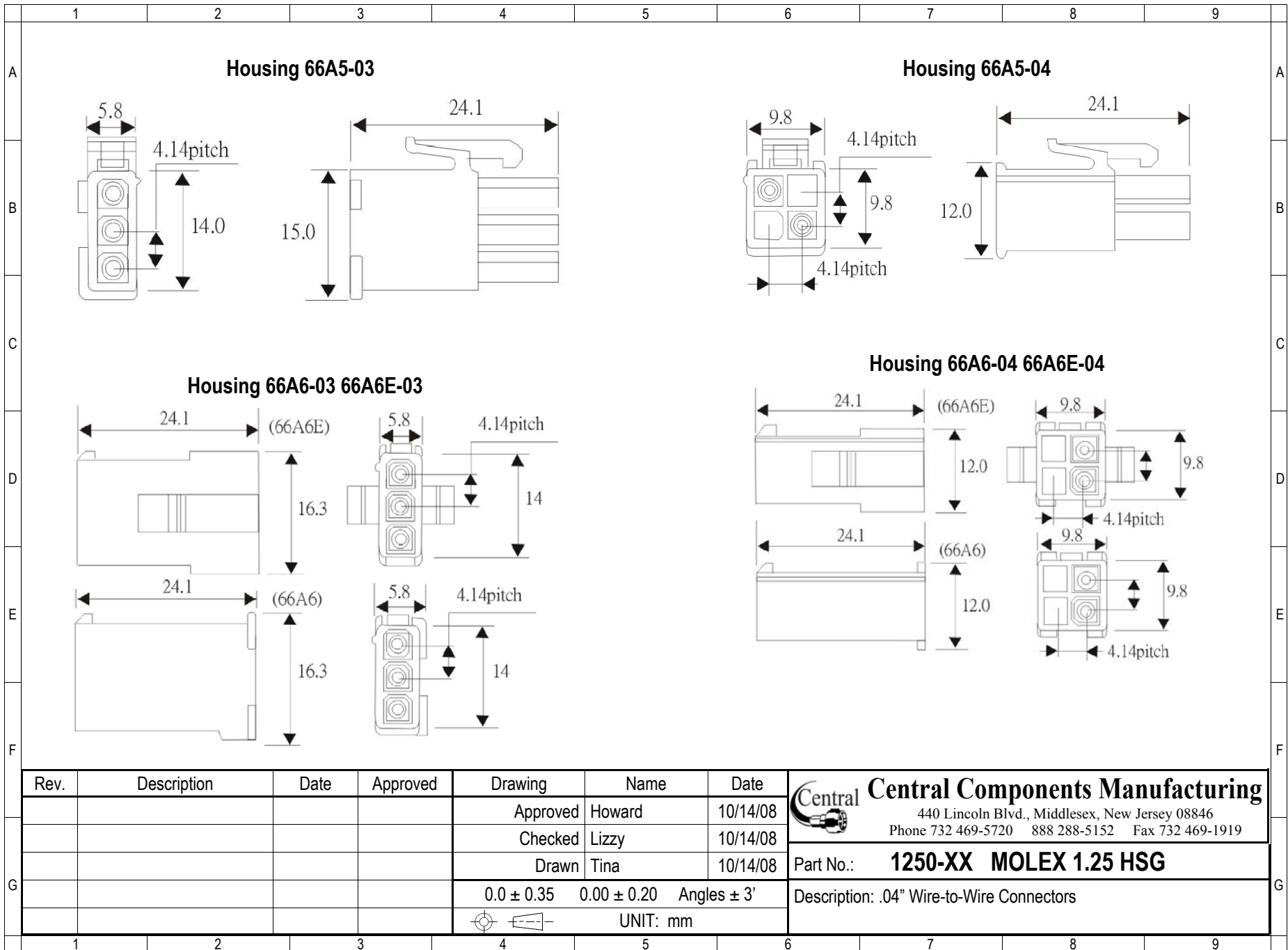


Central Components Manufacturing

440 Lincoln Blvd., Middlesex, New Jersey 08846
Phone 732 469-5720 888 288-5152 Fax 732 469-1919

Part No.: **1250-XX MOLEX 1.25 HSG**

Description: .04" Wire-to-Wire Connectors

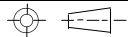


Housing 66A5-03

Housing 66A5-04

Housing 66A6-03 66A6E-03

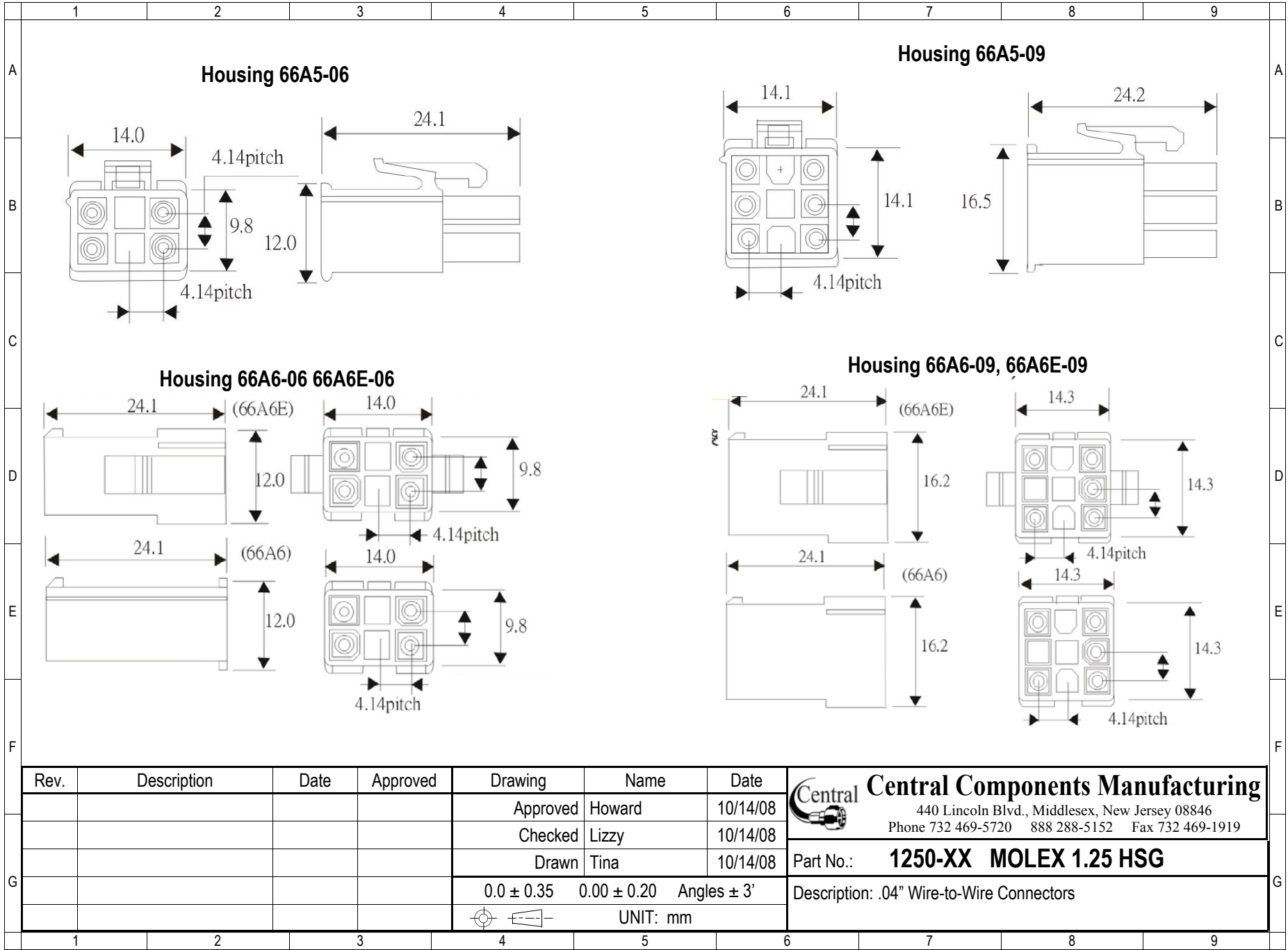
Housing 66A6-04 66A6E-04

Rev.	Description	Date	Approved	Drawing	Name	Date
				Approved	Howard	10/14/08
				Checked	Lizzy	10/14/08
				Drawn	Tina	10/14/08
				0.0 ± 0.35	0.00 ± 0.20	Angles ± 3'
						UNIT: mm

Central Components Manufacturing
 440 Lincoln Blvd., Middlesex, New Jersey 08846
 Phone 732 469-5720 888 288-5152 Fax 732 469-1919

Part No.: **1250-XX MOLEX 1.25 HSG**

Description: .04" Wire-to-Wire Connectors

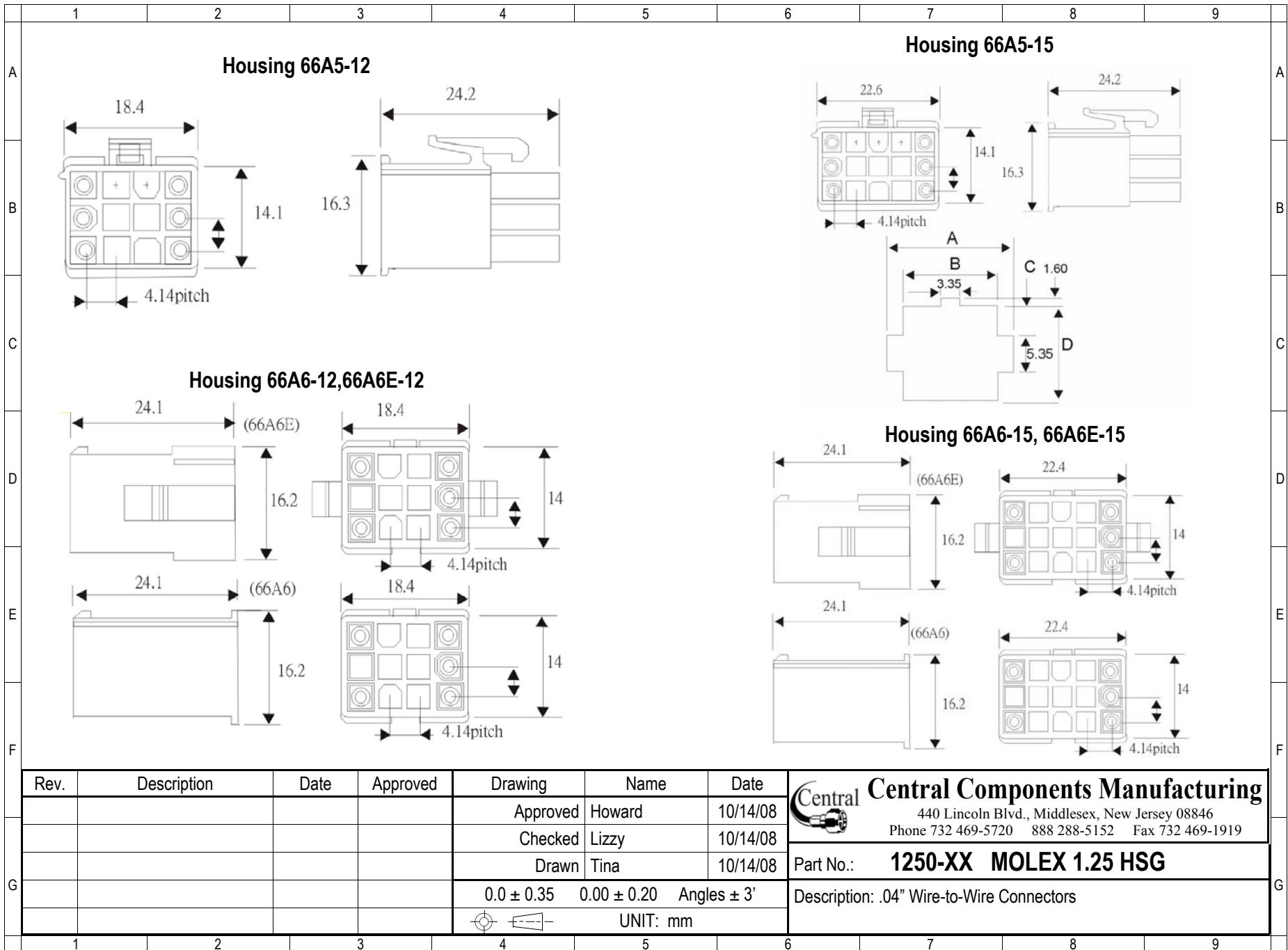


Rev.	Description	Date	Approved	Drawing	Name	Date
				Approved	Howard	10/14/08
				Checked	Lizzy	10/14/08
				Drawn	Tina	10/14/08
				0.0 ± 0.35	0.00 ± 0.20	Angles ± 3'
						UNIT: mm


Central Components Manufacturing
 440 Lincoln Blvd., Middlesex, New Jersey 08846
 Phone 732 469-5720 888 288-5152 Fax 732 469-1919

Part No.: **1250-XX MOLEX 1.25 HSG**

Description: .04" Wire-to-Wire Connectors



Rev.	Description	Date	Approved	Drawing	Name	Date
				Approved	Howard	10/14/08
				Checked	Lizzy	10/14/08
				Drawn	Tina	10/14/08
				0.0 ± 0.35	0.00 ± 0.20	Angles ± 3'
				UNIT: mm		



Central Components Manufacturing
 440 Lincoln Blvd., Middlesex, New Jersey 08846
 Phone 732 469-5720 888 288-5152 Fax 732 469-1919

Part No.: **1250-XX MOLEX 1.25 HSG**

Description: .04" Wire-to-Wire Connectors