

CHINT SHIELD

CHINT EUROPE (UK) LTD

Shield Range NXDB 125A TP&N Distribution Boards and Metering Solutions



- Individual boards are supplied with 125A Busbars and 4P, 125A Isolators
- Where 2 boards are combined using Splitter Kit MRJ4M-LS02, a 4P 250A Isolator is included
- Extension/Spreader Boxes part no. EX1803/SB are prefitted with a full width piece of 35mm Top Hat section Din Rail for housing a wide selection of Control Panel Components
- Various locking options are available
- Can be mounted together either Vertically OR Horizontally as Combined Power and Lighting Boards helping address Section L2 of the current Building Regulations



Index

Shield Range

NXDB 125A TP&N Distribution Boards and Metering Solutions

Product Overview	3
Product Features	4 & 5
Metering	6
PAN Assemblies	7
Dimensions and Part Numbers	7
Power and Lighting Boards	8
Wiring Diagrams	9
Weights	10
NB1 10KA MCBs and Terminal Torques	11
NB3LEU RCB0s 1P+N and Terminal Torques	11
Zs Values	12
NB1 and NB3LEU Auxiliaries	12
Terms and Conditions	13
Overview of other Chint Products	14

CHINT EUROPE (UK) LTD

MISSION STATEMENT

To supply product equal to the best
Be competitive in price, offering true value for money
React in a timely manner
Be easy to trade with

Product Overview

Robust ALL METAL TP&N Boards: 4, 6, 8, 12 and 18 Ways, *alternatively with Glazed Door.*

Boards can be mounted together, **vertically** or **horizontally** with or without **Meter kits**. Extension Boxes are available for use as Cable Spreader units, fitted with 35mm DIN rail to mount various components, alternatively with a 250A, 4 Pole Isolator to be used where 2 boards are combined.

Units are Powder Coated to RAL 7035 over pretreated Heavy Gauge Steel with welded corners.

A wide selection of laser pre cut cable entries which are easily removed without deforming the outer case.

A selection of PAN assemblies are available for mounting directly to Control Panels. 8, 12, and 18 ways.

The boards are available as individual units as shown on the following pages, alternatively Chint will assemble them to customer specification, fitting MCBs, RCB0s as detailed.



PLEASE NOTE:

Where Chint assemble boards to customer requirements be aware that weight may be an issue. Chint will take responsibility for shipping to a UK site address with the equipment mounted where appropriate to pallets and off loaded at the Kerbside. It is the client's responsibility to remove the equipment from the kerbside to a final installation point. We use 3rd party contractors for shipping, it is **crucial that firm arrangements are made to receive the goods.**

*Various weights are shown.

Product Features

Chint 125A "SERIES 3" B Boards

Chint "Series 3" B Boards are manufactured from Sheet Steel to meet the requirements of **BS-EN 60439** with an **IP rating of IP3X**.

The main boards designed and manufactured in the UK are of pleasing appearance, finished in smooth powder coated pale grey paint to RAL 7035 over pre treated steel.

Available sizes are 4, 6, 8, 12 and 18 Ways, a 4 Pole 125A Incomer is included as standard.

- **4, 6, 8, 12 and 18 Way, boards made in the UK**
- **Accepts Chint 6KA and 10KA MCBs, 10KA RCBs**
- **4 Pole, 125A Incomer fitted as standard**
- **Locking Capability – Separately Padlockable Main Boards and Extension Boxes**
- **Can be mounted in either portrait or landscape format as Power & Lighting Boards**



250A Mains Incomer Unit



Isolator can be locked off with up to 3 padlocks



Accessory: NXDB-Link



Chint NXDB MK III Distribution Boards are pre fitted with 1/2 turn coin operated fasteners to both the main boards and the cable spreader boxes.

Product Features

Chint NXDB MK III Showing Glazed Doors



Easy Viewing, Neutral Colour

Chint NXDB Mk III TP&N Distribution Boards are readily available with all metal, or glazed doors, finished in a pleasing neutral colour so as not to look out of place in most Commercial, Industrial applications.

The Cable Spreader Boxes are supplied with a full length of 35mm DIN Rail to allow components such as contactors, MCBs and various other components to be easily mounted either side of the incoming cables, in effect build a mini Control Panel.

The Acrylic Glazing is held in place with high specification adhesive.



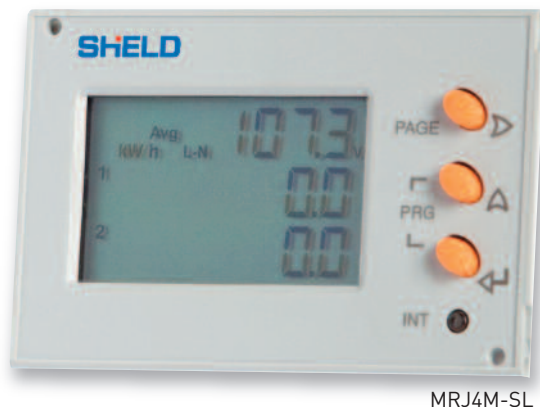
Wide range of Circular Conduit holes and square cut out for trunking, these are all laser pre cut so as to give easy access without damaging the Gland Plates.



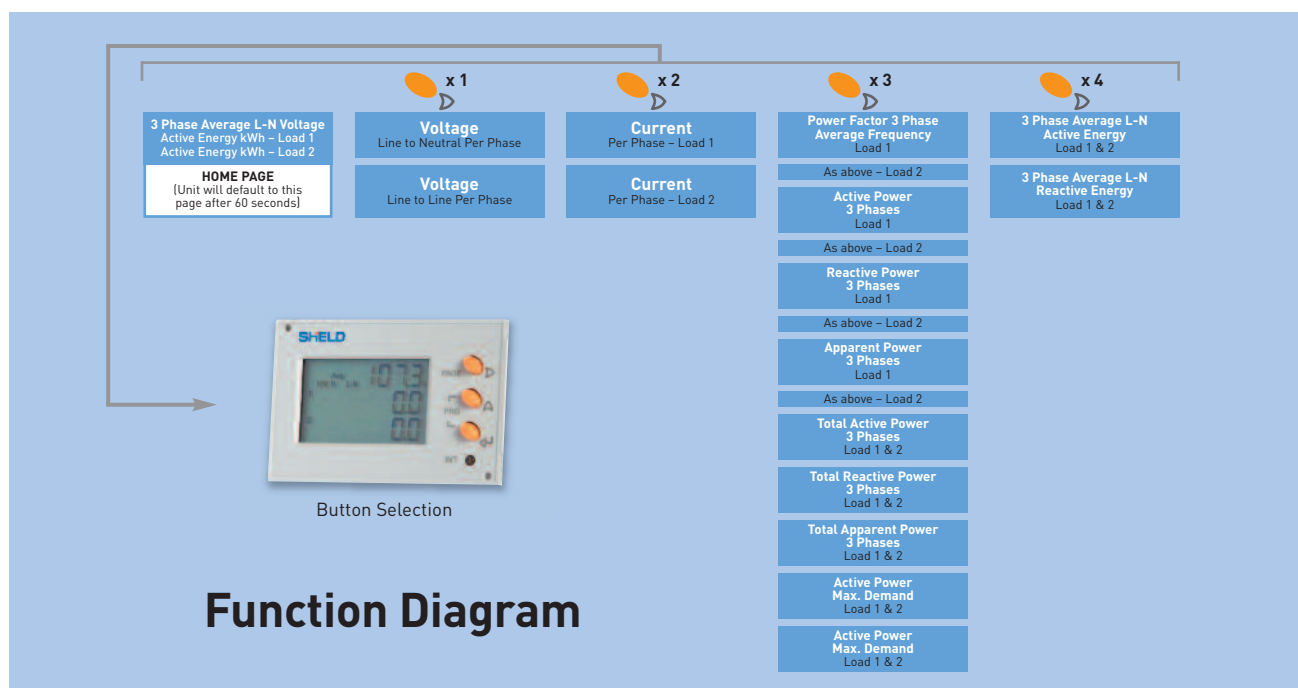
Metering

With Double CT Connection, DIN Rail Mounting and LCD Display

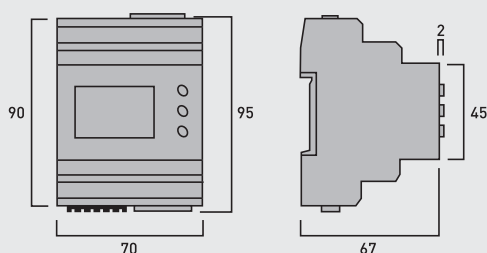
- Split Load, Dual CT Input Meter
- 4 Module DIN Rail mounting
- Single phase or 3 phase (4 wire) network balanced or unbalanced load
- Built-in dual energy pulse output, one for each load and RS485 MODBUS communication
- Wide range of measured parameters (see table below)
- High quality backlit LCD display
- 330mV current Transformer input
- Active energy class 1 (EN62053-21)
- Reactive energy class 2 (EN62053-23)
- THD up to 31st harmonic for voltage and current
- 3 phase: 140...460Vac measured voltage



- Single phase: 80...265Vac measured voltage
- Self supplied auxiliary
- Programmable CT ratio 5...10,000A per load
- Programmable VT ratio
- Frequency 45/65Hz
- Selectable CT phase correction allows reversal of L1 and L3
- Weight 200g



Power Meter Dimensions

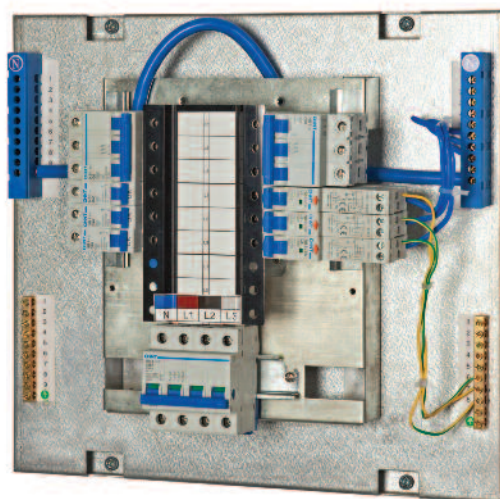


Please allow space above and below the meter for cable connections. Dimensions in mm.

PAN Assemblies

A new range of **Panel Mounting PAN Assemblies** suitable for the following MCB ranges is introduced **8, 12 and 18 ways**.

The PAN assemblies accept the Chint **ASTA approved** B, C or D Curve 6 or 10KA MCBs, 6A - 40A B or C Curve RCBs, they are supplied as standard with a 125A, 4 Pole Incomer.



Part Numbers and Dimensions for NXDB TP&N Boards, PAN Assemblies & Accessories

DESCRIPTION	PART NO.	HEIGHT	WIDTH	DEPTH
3 PHASE TP&N BOARDS – ALL METAL				
4 Way	NXDB-4	600	500	155
6 Way	NXDB-6	700	500	155
8 Way	NXDB-8	735	500	155
12 Way	NXDB-12	850	500	155
18 Way	NXDB-18	1,000	500	155
3 PHASE TP&N BOARDS – GLAZED WINDOW				
4 Way	NXDB-4G	600	500	155
6 Way	NXDB-6G	700	500	155
8 Way	NXDB-8G	735	500	155
12 Way	NXDB-12G	850	500	155
18 Way	NXDB-18G	1,000	500	155
PANEL MOUNTING PAN ASSEMBLIES				
8 Way PAN Assembly	PA-08	555	428	120
12 Way PAN Assembly	PA-12	715	428	120
18 Way PAN Assembly	PA-18	950	428	120
ACCESSORIES				
Spreader Box	EX-1803/SB	400	500	155
250A, 4P Incomer Unit with Cable Shrouds	EX-4250	400	500	155
Single Meter Kit	MRJ4M-LS01	-	-	-
Dual Meter Kit, Enclosure, Incomer & Cables	MRJ4M-LS02	400	500	155
18mm Blanking Plates (2 pieces)	NXDB-BP	-	-	-
3 Phase – Single Phasing Link	NXDB-LINK	-	-	-
Padlock and Fixing Kit	NXDB.LOCK	-	-	-

Pre assembled Metered Power and Lighting Boards and Meter Kits are available to order, see pages 8, 9 and 10.

Power and Lighting Boards

The Chint solution to metering the output from individual 3 Phase Boards is both elegant and convenient and can be applied to all NXDB boards i.e. to Chint 4, 6, 8, 12 and 18 Way boards.

We can supply the following as kits for assembly on site, alternatively we are happy to assemble to suit specific applications based on our basic format as shown on the front cover.

Where we are asked to assemble boards to suit specific needs it is recommended that an initial telephone call is made to our office possibly followed by a site meeting. Please be aware that dependent on how the boards are to be configured site weight – handling will be a consideration.



THE SINGLE BOARD KIT

Part No. MRJ4M-LS01 comprises:

- 1 x 3 Pole 1A MCB
(Pt. no. NB1-63B3P01)
- 1 x Meter
(Pt. no. MRJ4M-SL)
- 1 x Current Transformer
(Pt. no. TAS242EW)
- 1 x Supply Cable
(Pt. no. TASMVSC1.00)
- 1 x Communications Cable
(Pt. no. L67 7010 RJ45)
- 2 x End Stops

THE TWIN BOARD KIT

Part No. MRJ4M-LS02 comprises:

- 1 x 4 Pole Mains Splitter Box with
125A, 4 Pole Incomer
- 2 x 3 Pole 1A MCBs
(Pt. no. NB1-63B3P01)
- 2 x Meters
(Pt. no. MRJ4M-SL)
- 2 x Current Transformers
(Pt. no. TAS242EW)
- 2 x Supply Cables
(Pt. no. TASMVSC1.00)
- 2 x Communications Cables
(Pt. no. L67 7010 RJ45)
- 4 Pole Mains and Earth Interconnection
Cables as appropriate

IMPORTANT NOTE:

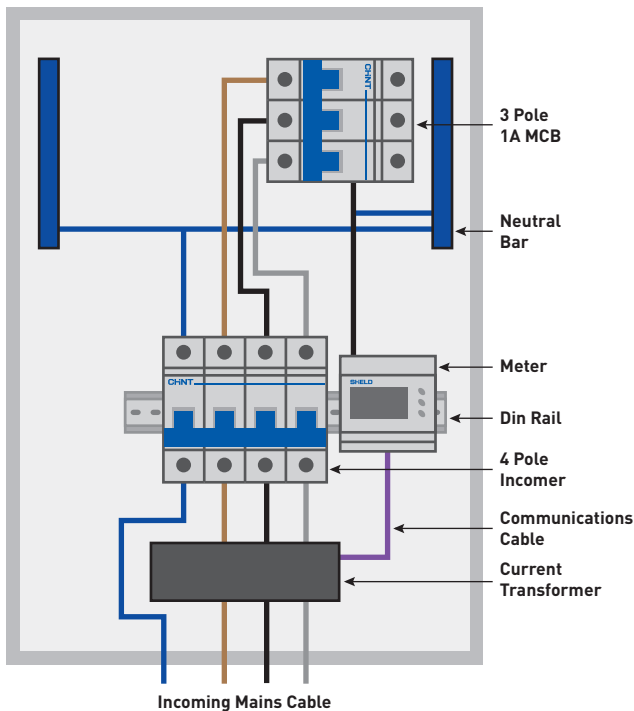
When sizing the correct size of board be aware that the MCB feeding the meter etc., takes up 3 full Ways, thereby reducing the effective size of each board by 1, 3 way module, i.e. A 4 Way board becomes 3, 6 Way becomes 5 etc.

Wiring Diagrams

There is a full range of **ASTA approved** B, C and D Curve MCBs and B and C Curve RCBOs readily available to complement the **Chint NXDB TP&N Distribution Boards**.

SINGLE BOARD

Part No. MRJ4M-LS01

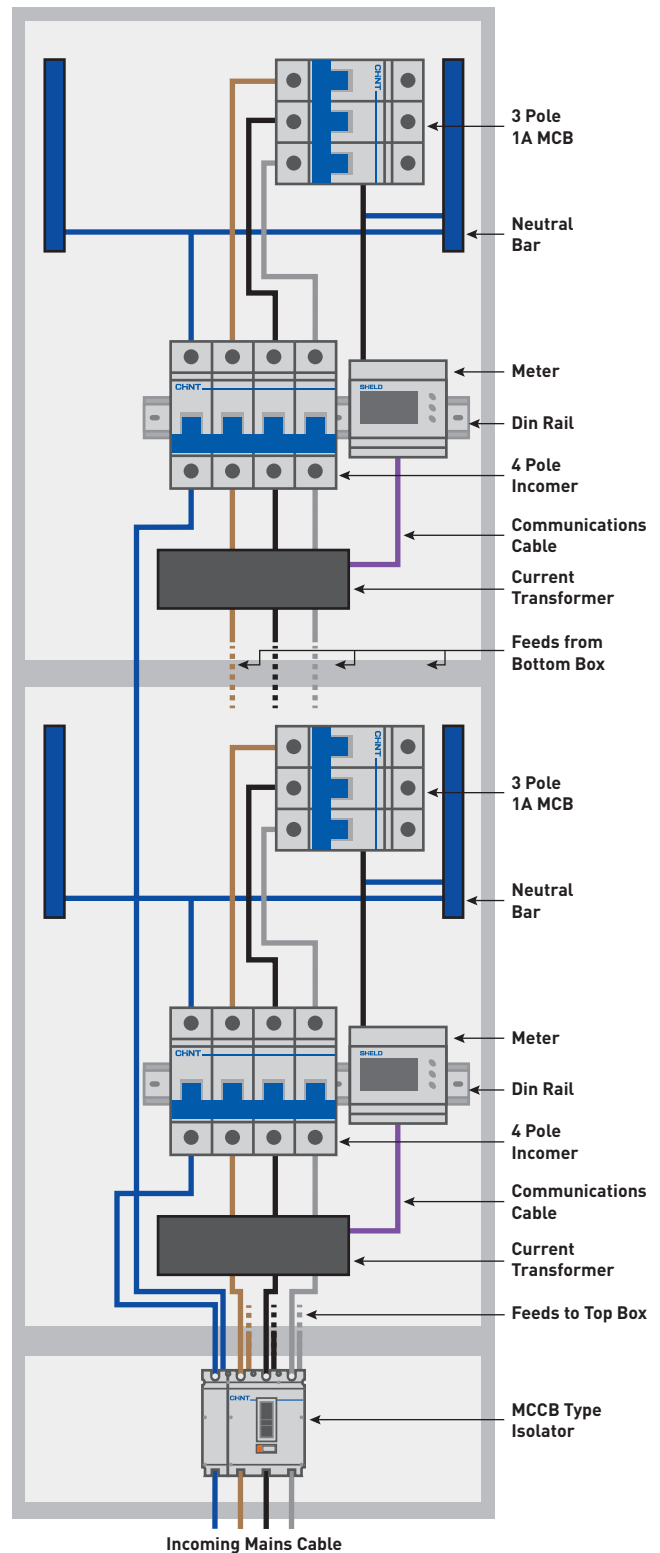


*PLEASE NOTE:

Chint will take responsibility for shipping to an agreed UK location on appropriate pallets. Our carrier will offload to the roadside after which it will be Client's responsibility to transfer to the final location. **Carriage is charged extra.**

TWIN BOARD

Part No. MRJ4M-LS02



Options

Chint NXDB Distribution Boards can be supplied with all Metal covers or Plastic “see-through covers”, or a mixture of both to suit customers’ specifications.

The following part numbers are the most popular, although other variants can be supplied as required. Part numbers suffixed **MK**, i.e. **NXDB-4MK** are all metal construction and suffix **MKG**, i.e. **NXDB4MKG** are supplied with a plastic window.

Please speak with our sales office should you require a mixture.

All NXDB Boards are supplied prefitted with 4 Pole 125A Incomers with the main Neutral wired to appropriate Terminal Blocks.

ALL METAL



PART NO.	APPROX. WEIGHT (KG)
NXDB-4MK	19
NXDB-6MK	21
NXDB-8MK	22
NXDB-12MK	24
NXDB-18MK	28
NXDB-44MK	48
NXDB-46MK	50
NXDB-48MK	51
NXDB-412MK	53
NXDB-418MK	57
NXDB-66MK	52
NXDB-68MK	53
NXDB-612MK	55
NXDB-618MK	59
NXDB-88MK	54
NXDB-812MK	56
NXDB-818MK	60
NXDB-1212MK	58
NXDB-1218MK	63
NXDB-1818MK	66

GLAZED WINDOW



PART NO.	APPROX. WEIGHT (KG)
NXDB-4MKG	18
NXDB-6MKG	20
NXDB-8MKG	21
NXDB-12MKG	23
NXDB-18MKG	27
NXDB-44MKG	47
NXDB-46MKG	49
NXDB-48MKG	50
NXDB-412MKG	52
NXDB-418MKG	56
NXDB-66MKG	51
NXDB-68MKG	52
NXDB-612MKG	54
NXDB-618MKG	58
NXDB-88MKG	53
NXDB-812MKG	55
NXDB-818MKG	59
NXDB-1212MKG	57
NXDB-1218MKG	62
NXDB-1818MKG	65

NB1 10KA MCBs



Boxed in 12s

In (A)	Pole	B CURVE	C CURVE	D CURVE
1A	1P	NB1-63BH1P01	NB1-63CH1P01	NB1-63DH1P01
2A	1P	NB1-63BH1P02	NB1-63CH1P02	NB1-63DH1P02
3A	1P	NB1-63BH1P03	NB1-63CH1P03	NB1-63DH1P03
4A	1P	NB1-63BH1P04	NB1-63CH1P04	NB1-63DH1P04
6A	1P	NB1-63BH1P06	NB1-63CH1P06	NB1-63DH1P06
10A	1P	NB1-63BH1P10	NB1-63CH1P10	NB1-63DH1P10
16A	1P	NB1-63BH1P16	NB1-63CH1P16	NB1-63DH1P16
20A	1P	NB1-63BH1P20	NB1-63CH1P20	NB1-63DH1P20
25A	1P	NB1-63BH1P25	NB1-63CH1P25	NB1-63DH1P25
32A	1P	NB1-63BH1P32	NB1-63CH1P32	NB1-63DH1P32
40A	1P	NB1-63BH1P40	NB1-63CH1P40	NB1-63DH1P40
50A	1P	NB1-63BH1P50	NB1-63CH1P50	NB1-63DH1P50
63A	1P	NB1-63BH1P63	NB1-63CH1P63	NB1-63DH1P63



Boxed in 4s

In (A)	Pole	B CURVE	C CURVE	D CURVE
1A	3P	NB1-63BH3P01	NB1-63CH3P01	NB1-63DH3P01
2A	3P	NB1-63BH3P02	NB1-63CH3P02	NB1-63DH3P02
3A	3P	NB1-63BH3P03	NB1-63CH3P03	NB1-63DH3P03
4A	3P	NB1-63BH3P04	NB1-63CH3P04	NB1-63DH3P04
6A	3P	NB1-63BH3P06	NB1-63CH3P06	NB1-63DH3P06
10A	3P	NB1-63BH3P10	NB1-63CH3P10	NB1-63DH3P10
16A	3P	NB1-63BH3P16	NB1-63CH3P16	NB1-63DH3P16
20A	3P	NB1-63BH3P20	NB1-63CH3P20	NB1-63DH3P20
25A	3P	NB1-63BH3P25	NB1-63CH3P25	NB1-63DH3P25
32A	3P	NB1-63BH3P32	NB1-63CH3P32	NB1-63DH3P32
40A	3P	NB1-63BH3P40	NB1-63CH3P40	NB1-63DH3P40
50A	3P	NB1-63BH3P50	NB1-63CH3P50	NB1-63DH3P50
63A	3P	NB1-63BH3P63	NB1-63CH3P63	NB1-63DH3P63

NB1 Terminal Torque 22In lbs, 2.5Nm.

NB3LEU RCBOs 1P+N



NB3LEU, 10KA		
DESCRIPTION	B CURVE	C CURVE
6A 30mA	NB3LEU-B06	NB3LEU-C06
10A 30mA	NB3LEU-B10	NB3LEU-C10
16A 30mA	NB3LEU-B16	NB3LEU-C16
20A 30mA	NB3LEU-B20	NB3LEU-C20
25A 30mA	NB3LEU-B25	NB3LEU-C25
32A 30mA	NB3LEU-B32	NB3LEU-C32
40A 30mA	NB3LEU-B40	NB3LEU-C40

2.5Nm-18In lbs.

Zs Values

MAX NB1 Zs VALUES 6-10KA	B CURVE		C CURVE		D CURVE	
	0.4 Sec	5 Sec	0.4 Sec	5 Sec	0.4 Sec	5 Sec
1	48	48	24	34.29	17.14	24.00
2	24	24	12	17.14	8.57	12.00
3	16	16	8.00	11.43	5.71	8.00
4	12	12	6.00	8.57	4.29	6.00
6	8	8	4.00	5.71	2.86	4.00
10	4.80	4.80	2.40	3.43	1.71	2.40
16	3.00	3.00	1.50	2.14	1.07	1.50
20	2.40	2.40	1.20	1.71	0.86	1.20
25	1.92	1.92	0.96	1.37	0.69	0.96
32	1.50	1.50	0.75	1.07	0.54	0.75
40	1.20	1.20	0.60	0.86	0.43	0.60
50	0.96	0.96	0.48	0.69	0.34	0.48
63	0.76	0.76	0.38	0.54	0.27	0.38

NB1 and NB3LEU Auxiliaries



AUXILIARIES FOR NB1 & NB3LEU

DESCRIPTION	PART NO.
1 C/O Auxiliary Contact	XF9
C/O Alarm Auxiliary Contact	XF9J
230V Shunt Trip	S9
230V Under Voltage Release	V9

STANDARD TERMS AND CONDITIONS OF SALE

Unless otherwise stated in writing, the following conditions shall apply:

1. DEFINITIONS

"The seller" means Chint Europe (UK) Ltd.

"The Purchaser" means the Company, firm or person to be supplied with the Goods by the Seller.

"Goods" means the products or services to be supplied as per the Contract.

"The Contract" means the Contract for sale/purchase of the Goods made between the Seller and the Purchaser to which these Conditions apply.

2. QUOTATIONS & ACCEPTANCE

- a) Quotations issued shall remain valid for a period of thirty (30) days from the date of issue unless otherwise stated and represent no obligation on the part of the Seller until the Seller accepts the Purchaser's order.
- b) The Purchaser's order or acceptance must be identified with an order number and must contain sufficient information to enable the Seller to proceed.
- c) The Seller's conditions shall prevail in the event of inconsistency between conditions of the Seller and the Purchaser. Any variation of the Seller's conditions shall only become binding on the Seller when accepted in writing by a duly authorised person on behalf of the Seller.

3. PRICE & DELIVERY

- a) Prices quoted do not include VAT.
- b) Carriage and delivery will be arranged at the request and at the expense of the Purchaser. Where applicable C.O.D. charges will be added to the price of the Goods.
- c) Price variation - The Seller reserves the right to increase the process of the Goods agreed to be sold in proportion to any increase of costs to the Seller between the date of acceptance of the order and the date of delivery (including but not by way of limitation those relating to exchange rates, labour, materials, transport and taxes) of where the increase is due to any act of default of the Purchaser including the cancellation by the Purchaser of part of any order.
- d) Any delivery period quoted is an estimate only and does not form part of the Contract, and the Seller shall not be held liable for failure to deliver within any quoted period.
- e) Claims for damage or shortage must be made within 5 working days from date of receipt of Goods at the Purchaser's specified delivery address. Claims for non-delivery must be made in writing within 10 working days of the invoice date.

4. PAYMENT

Where account facilities are not approved, payment will be made by cheque or credit card with order. Where account facilities have been approved, payment will be due 30 days after the date the Goods are invoiced, unless otherwise agreed in writing. Payment shall not be withheld on account of any unrelated claim by the Purchase against the Seller. The Seller reserves the right to suspend deliveries where payment of any invoice has not been made on the due date. The Seller reserves the right to charge interest of 2% per month on any amounts outstanding after the due date. The Seller reserves the right to cancel any Contract due to later or non-payment of account if, in the reasonable opinion of the Seller, the Purchaser is unlikely to be able or willing to pay accounts as they fall due. The value of Goods specifically ordered and held in stock against any Contract will be claimed in the event of late or non-payment of account.

5. DESCRIPTION

- a) The Goods will be those supplied to the manufacturer's current standard specification and finish.
- b) The Seller accepts no liability for any damage or injury arising directly or indirectly from any error or omission in the accuracy of technical data or literature relating to the Goods not being caused by the gross neglect of the Seller.

6. TITLE

Payment in full is due in respect of any Goods delivered. Until payment is made in full the Goods shall remain in the Property of the Seller but the risk therein and all liability to third parties in respect thereof shall pass to the Purchaser on delivery. Until full payment has been made, the Purchaser shall store the Goods in such a way as to enable them to be identified as the property of the Seller. Notwithstanding such retention of Title the Purchaser may re-sell the Goods to its own customers in the ordinary course of its business. The privilege may be withdrawn by the Seller at any time at his discretion. Title of Goods cannot pass to a third party until all invoices or outstanding amounts are paid for in full. The Purchaser shall accordingly set aside funds from any re-sale of Goods in whatever form to cover full payment of the Seller's Goods. Upon any breach of Contract, the Purchaser shall return any Goods as requested and allow the Seller immediate access to any premises where Goods are held to enable identification and re-possession as required by the Seller. No liability will be accepted by the Seller for loss or damage howsoever incurred during the exercising of the above rights of re-possession. The Purchaser shall insure the Goods from time of delivery and at all times while the Goods remain in their possession for the full invoice value of the Goods.

7. LIMITATION OF LIABILITY

- a) Except to the extent described in Condition 6, the Seller shall not be liable in Contract tort or otherwise for any loss, damage, injury, expense or cost suffered or incurred by the Purchaser or any third party (including but not limited to consequential or indirect loss or loss of profit) whatsoever or howsoever arising out of/in connection with the supply of Goods or Services by the Seller other than to supply Goods conforming to the original agreed specification or at the Seller's option to refund to the Purchaser any monies already paid in respect of the Goods or Services.
- b) The Seller's obligation under Condition 6 is the sole liability of the Seller in respect of the quality, fitness for purpose, compliance with description and/or their compliance with sample. All other representations, warranties, conditions, terms and statements in respect of the Goods or Services express or implied Statutory or otherwise are excluded save where not capable of exclusion by Law.

8. FORCE MAJEURE

The Seller shall have no liability in respect of failure to deliver or perform or delay in the delivering or performing any obligations under the Contract due to causes outside the reasonable control of the Seller such as acts of God, fire, floods, war and civil disturbances or not, acts of Government, currency restriction, labour disputes, strikes, unavailability of materials or failure of supplier or subcontractor to deliver on time.

9. STORAGE

When delivery is delayed for reasons attributable to the Purchaser or its Agents, storage and other additional costs will be charged to the Purchaser and the Goods will be at the Purchaser's risk from the date of commencement as such. The Seller reserves the right to invoice the Goods at the original delivery date.

10. PATENT RIGHTS

- a) The sale of Goods and the publication of any information or technical data relating thereto does not imply freedom from patent registered design or other industrial property rights in respect of any particular application of the Goods.
- b) The Purchaser warrants that the designs and specifications supplied by it to the Seller will not involve the infringement of any patent registered design or other industrial property right in the manufacture and sale of the Goods by the Seller.
- c) The Purchaser undertakes to indemnify and keep indemnified the Seller against all royalties, claims, actions, demands, proceedings, losses and costs in connection with any infringement or alleged infringement of any patent, registered design or other industrial property right in the manufacture sale or application of the Goods, arising out of or in connection with the matters described in paragraphs a) and b) above provided that nothing in the Clause shall operate to the prejudice of the Statutory undertakings as to title, etc. contained in Section 12 Sale of Goods Act 1893 as amended.

11. PURCHASER'S SAMPLES & DRAWINGS

Drawings and samples supplied by the Purchaser for the Contract shall be suitable quality and shall be provided free of charge in sufficient quantities and at the times required by the Seller. Any delay in such drawings and samples provided by the Purchaser shall not entitle the Purchaser to rescind the Contract, reject the Goods, make deductions from the Contract price or claim damages in respect of such defect and the Purchaser shall indemnify and keep indemnified the Seller from and against all actions, demands, claims, proceedings, losses of costs arising from the supply of defective drawings and samplers by the Purchaser.

12. ORIGIN OF GOODS

The Seller makes no representation and gives no warranty in respect of the sources of origin of manufacture or production of the Goods or any part thereof.

13. DOCUMENTS

The Seller will supply one invoice and one Advice Note for each consignment of Goods, notwithstanding that the consignment may compose more than one package.

14. CANCELLATION AND RETURN OF GOODS

- a) Cancellation will not be accepted for non-stock items. If the Seller agrees to accept cancellation of an order for stock items, a minimum charge of 20% of the total order price may be made.
- b) No returns are permitted without the Seller's previous consent.
- c) If the Seller agrees to accept returns they may be returned at the Purchasers expense in the condition in which they were supplied to a minimum charge of 20% of the total order price.

15. LAW

Any question of law relating to these Conditions or agreed amendments thereof or the terms of any Contract between the Purchaser and the Seller shall be determined in all respects by the Laws of England.

UK Registered Company No. 5058286

Adequate Main and Earth connections are provided, it is the installer's responsibility to ensure these are adequately tightened when the system is being commissioned.

PLEASE NOTE: Carriage is charged extra on NXDB Boards.

CHINT SHEL

THE PROFESSIONALS' CHOICE



Overview of other Chint Products

Chint Europe (UK) Ltd, Bracken Trade Park, Dumers Lane, Bury BL9 9QP
 Tel: +44 (0) 161 762 9333 Fax: +44 (0) 161 762 9898 E-mail: sales@chint.co.uk www.chint.co.uk

© CHINT Group All Rights Reserved. Specifications and technical data are subject to change without notice. Please contact us to confirm relevant information on ordering.
 3PHASEMKIII:0114/002