

YBLX-CK/P 106



YBLX-CK/J 10511



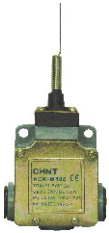
YBLX-CK/J 10541



YBLX-CK/P 102



YBLX-CK/M 106



YBLX-CK/T 121



YBLX-CK/M 102



YBLX-CK/M 115



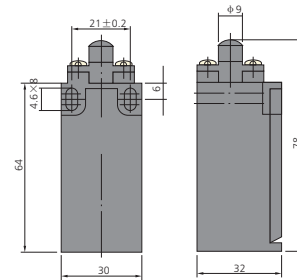
YBLX-CK/M 121



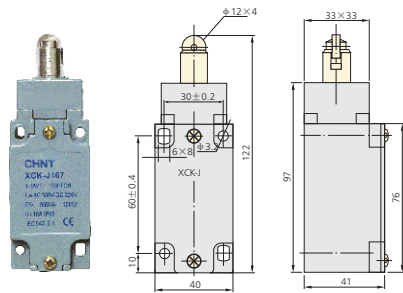
YBLX-CK/P 121



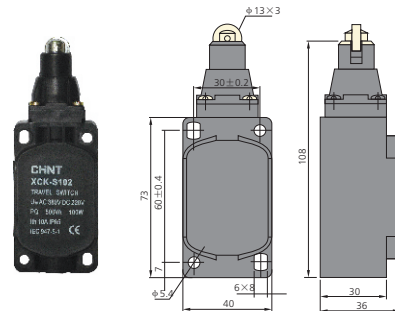
YBLX-CK/P 110



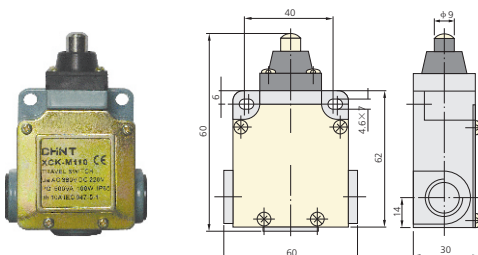
YBLX-CK/J 167



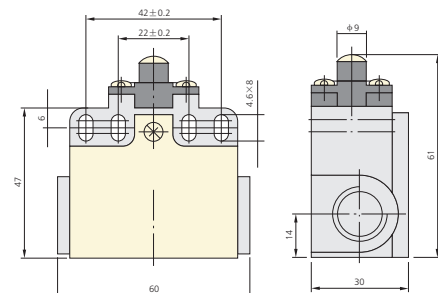
YBLX-CK/S 102



YBLX-CK/M 110



YBLX-CK/T 110



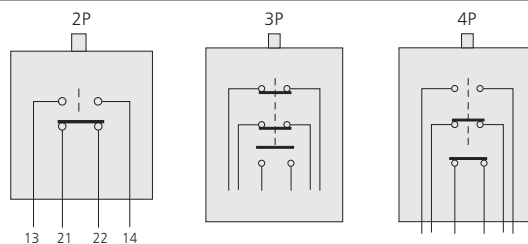
Travel Switches



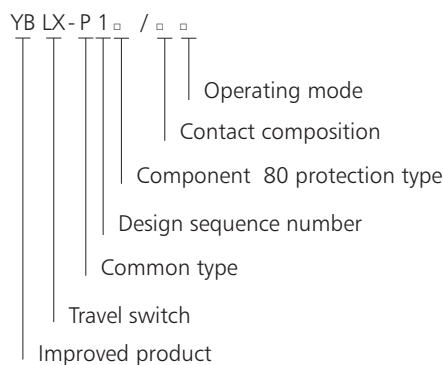
YBLX-P1 Travel Switch

1. General

Contacting types



2. Type Designation



	2P component	3P component	4P component
1	1 NO+1 NC	1 NO+2 NC	2NO+2NC

2-pole switch component

100	2-pole protective type travel switch (wide type)
120	2-pole protective type travel switch (narrow type)
303	3-pole protective type travel switch (wide type)
404	4-pole protective type travel switch (wide type)

Model (recommended)	Operating mode	Substitution model (production stopped)		
YBLX-P1/120/1B	Direct-driven	YBLX-P1/120/0B		
YBLX-P1/120/1C	Direct-driven, buffering	YBLX-P1/120/0C		
YBLX-P1/120/1D	Direct driven, with single roller	YBLX-P1/120/0D		
YBLX-P1/120/1E	Direct-driven with single roller, buffering	YBLX-P1/120/0E		
YBLX-P1/120/1F	Lever, with single roller	YBLX-P1/120/0F		
YBLX-P1/120/1G	Angle of rotating arm adjustable, with single roller	YBLX-P1/120/1H YBLX-P1/120/0H YBLX-P1/120/0G	YBLX-P1/120/1J YBLX-P1/120/0J	YBLX-P1/120/1K YBLX-P1/120/0K