



HD - MWIR



HD - EO



HD - SWIR

Cloud Cap
TECHNOLOGY

Cloud Cap Technology TASE500

Advanced Multi-Spectral Imaging System

HD Imaging Performance

- HD solution for improved image quality and clarity
- Full digital imaging enables advanced post processing and third party exploitation tools and no compression artifacts
- Fourth Generation HD-MWIR imager for superior IR imaging at long ranges, including local area processing and noise reduction filter
- Precision optics, shared aperture between EO/SWIR imagers for maximum image sharpness and clarity
- Shortwave Infrared (SWIR) imaging through smoke, dust and haze where other imagers are ineffective

Integrated Solution

- Viewpoint user interface for improved operator efficiency
- Touchscreen, tablet, airborne downlink video display options available
- Ruggedized hand controller (optional)
- Configurable software to suit mission needs
- Single LRU with onboard GPS/INS for simple integration and installation
- Multiple laser payload options: illuminator, laser range finder
- Continuous zoom for improved situational awareness, plus Picture-in-Picture supported.

Market Leading SWaP & Value

- 10-20 lbs. savings over similar sized payloads
- Lowest cost with fully integrated features for best value



UTC Aerospace Systems

Where ingenuity takes off

Daylight Camera

High Definition (HD) 720p
Continuous Optical Zoom 30x
Continuous Digital Zoom: 4x
HFOV (HD) 42.0° - 1.4°
HFOV (SD) 15.0° - 0.45°
Wavelength: 350 to 740 nm

HD Daylight Spotter

Fixed Spotter Lens
Resolution: 1280 x 720
HFOV: 0.9°

MWIR (Mid-Wave Infrared) Camera

High Definition (HD) 720p
Continuous Optical Zoom: 6.3x
Continuous Digital Zoom: 4x
HFOV (HD) 30° - 3.0°
HFOV (SD) 15.0° - 1.5°
Wavelength: 3 to 5 μ m

SWIR (Short Wave Infrared) Camera (optional)

Continuous Optical Zoom: 10x
Continuous Digital Zoom: 4x
Resolution: 1280 x 720
HFOV (HD): 30° - 3.0° continuous
HFOV (SD): 15.0° - 1.5° continuous
Wavelength 0.9 to 1.7 μ m

Laser Illuminator (optional) (Narrow Beam)¹

Class IIIb laser ¹
830 nm (NVG band), 150 mW max

Laser Range Finder (optional)

Up to 10km
Class I Eye Safe
1550 nm Wavelength

Additional Laser Options²

Consult the factory

Payload Performance

360° Continuous pan
+90° to -95° Tilt
4-Axis active stabilization
3-Axis passive vibration isolation (optional)

Envelope 180 KIAS, 0-15,000 ft.

Data & Control Interface

RS-232, CAN, Ethernet

Electrical

VIN: 12 - 30 Volts
(MIL-STD-704F)
Power: 75W (average)
125W (max)
AS6129 compliant

Mechanical

Diameter: 10.2 inches (259.08 mm)
Height: 14.25 inches (361.9 mm)
Weight: 30 lbs (13.60 Kg)
(standard configuration)
AS6169 compliant

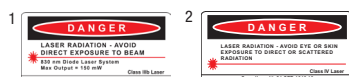
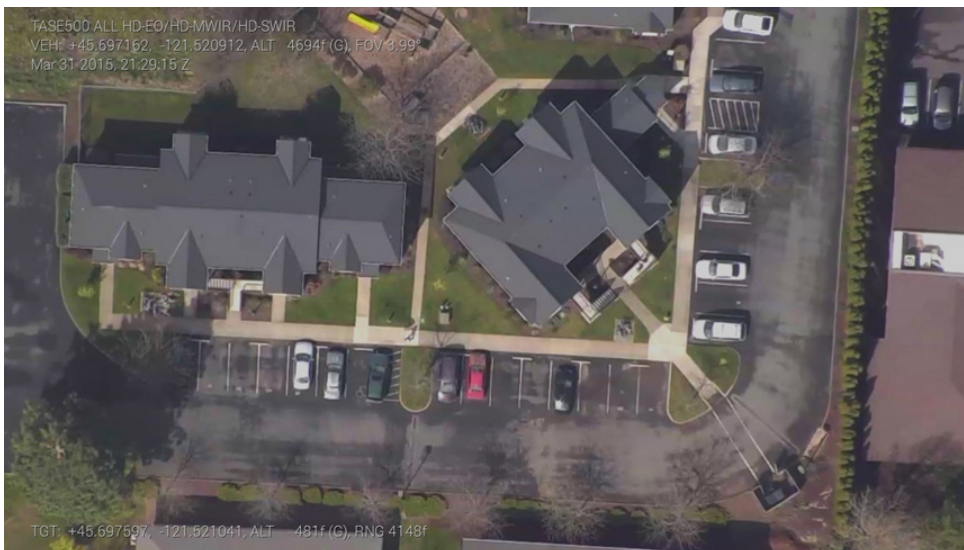
Environmental

Designed to MIL-STD-810G, 461F, 704F
Operating temperature: -20°C to +50°C
Blowing sand and dust
22g shock (launch / recovery)

Video Out:

Digital video: SMPTE 292
(HD-SDI), H.264

Metadata MISB compatible
STD0601, STD0902.1 & STD9716, STANAG
4609, SMPTE 291M/RP214



Due to our continued efforts in product improvement, all product specifications are subject to change without notice.

For additional information:
Cloud Cap Technology
202 Wasco Loop, Suite 103
Hood River, OR 97031 USA
Ph: +1.541.387.2120
www.cloudcaptech.com
Jan 2016