



INSTALLATION INSTRUCTIONS FOR CMP STOPPER PLUG TYPES 747, 757 & 767

STOPPER PLUGS FOR USE IN EXPLOSIVE ATMOSPHERES TO CLOSE OFF THREADED ENTRY HOLES

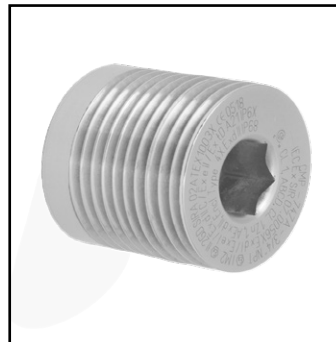
INCORPORATING EU DECLARATION OF CONFORMITY TO DIRECTIVE [2014/34/EU]

TYPE 747, 757 & 767 STOPPER PLUGS

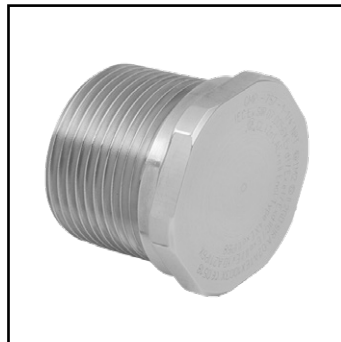
747A
STOPPER PLUG



747B
TAMPER-PROOF STOPPER
PLUG



757
HEXAGON HEAD
STOPPER PLUG



767
STOPPER PLUG



LISTED
CONDUIT FITTING FOR
EXPLOSIVE ATMOSPHERES
65RN

TYPE 747A STOPPER PLUG

- Stopper plug with external Allen key aperture

TYPE 747B STOPPER PLUG

- Stopper plug with an internal Allen key aperture.

Tightened in place from inside the enclosure, making it tamper-proof.

TYPE 757 STOPPER PLUG

- Hexagon headed stopper plug. Tightened with a spanner.

TYPE 767 STOPPER PLUG

- Mushroom headed stopper plug with an Allen key aperture.



The 747, 757 & 767 Stopper Plugs are available in metal for use in Ex d and Ex e environments and in nylon for Ex e environments only.

Type 757 and 767 stopper plugs are available with an optional "O" ring face seal.

TECHNICAL DATA

CABLE GLAND TYPE : 747A, 747B, 757 & 767 Stopper Plugs
INGRESS PROTECTION : IP66, IP67, IP68, Enclosure Type 4X
PROCESS CONTROL SYSTEM: : BS EN ISO 9001 - ISO/IEC 80079-34:2011

EXPLOSIVE ATMOSPHERES AREA CLASSIFICATION

ATEX CERTIFICATION No : SIRA 13ATEX1265X
ATEX CERTIFICATION CODE : **Metallic**
: ⚡ II 2G Ex d IIC Gb / Ex e IIC Gb
: ⚡ II 1D Ex d I Mb / Ex e I Mb, ⚡ II 1D Ex ta IIIC Da
: **Non-metallic**
: ⚡ II 2G Ex e IIC Gb
: ⚡ II 1D Ex ta IIIC Da
IECEX CERTIFICATION No : IECEX SIR.13.0094X, IECEX SIM.15.0002X
IECEX CERTIFICATION CODE : **Metallic**
: Ex d I Mb, Ex e I Mb
: Ex d IIC Gb, Ex e IIC Gb, Ex ta IIIC Da
: **Non-metallic**
: Ex e IIC Gb, Ex ta IIIC Da
cCSAus CERTIFICATION No. : 1055233 (Metallic only)
cCSAus CERTIFICATION CODE : Ex de II; Class I Groups A,B,C and D; Class II, Groups E,F,G; Class I, Zone 1, AEx de II; IP66, 67 and 68, Enclosure Type 4X
UL CERTIFICATION No. : E214221 (Metallic only)
UL CERTIFICATION CODE : Class I Groups A,B,C and D, Class II Groups E,F,G, Class III

INSTALLATION INSTRUCTIONS

Installation should only be performed by a competent person using the correct tools. Ensure thread type and size are compatible with the associated enclosure / fitting threads. Fully tighten threads

SPECIAL CONDITIONS FOR SAFE USE

- The following conditions apply to all adaptors, reducers and stopping plugs:
 - The adaptors reducers and stopping plugs shall be assembled in such a way that their protrusion from an associated enclosure is not increased.
 - The interfaces between a male thread of an adaptor/reducer and an associated enclosure, between a female thread of an adaptor/reducer and a cable entry device, and between a stopping plug and an associated enclosure cannot be defined. Therefore, it is the installers responsibility to ensure that the appropriate ingress protection level is maintained at these interfaces.
- The following condition applies to non-metallic and aluminium adaptors, reducers and stopping plugs:
 - Non-metallic and aluminium adaptors, reducers and stoppin plugs shall not be used in group I applications.
- The following conditions apply to non-metallic adaptors, reducers and stopping plugs:
 - Non-metallic adaptors, reducers & stopping plugs shall not be used in enclosures where the temperature, at the point of mounting, is outside the range of -20°C to +60°C.
 - Refer to the manufacturers instructions for the action necessary regarding electrostatic risk.

ELECTROSTATIC DISCHARGE HAZARD

If cleaning is necessary then non-metallic parts can be cleaned with a damp cloth and allowed to dry naturally. Do not clean using a dry cloth.

ACCESSORIES

The following accessories are available from CMP Products, as optional extras, to assist with fixing, sealing and earthing :- Locknut | Earth Tag | Serrated Washer | Entry Thread (I.P.) Sealing Washer.

Male Thread (mm)	747A	747B	757	767	Max Installation Torque (mm)
M16	747DAM1	747DBM1	757DM1	767DM1	20
M20	747DAM2	747DBM2	757DM2	767DM2	25
M25	747DAM3	747DBM3	757DM3	767DM3	30
M32	747DAM4	747DBM4	757DM4	767DM4	35
M40	747DAM5	747DBM5	757DM5	767DM5	45
M50	747DAM6	747DBM6	757DM6	767DM6	65
M63	747DAM7	747DBM7	757DM7	767DM7	95
M75	747DAM8	747DBM8	757DM8	767DM8	120
M90	747DAM9	747DBM9	757DM9	767DM9	155
M100	747DAM10	747DBM10	757DM10	767DM10	170

Dimensions are displayed in millimetres unless otherwise stated

Note:

- 757 & 767 Stopper Plugs are available with an integral entry thread seal. Select this version by adding "R" after 757D, e.g. 757DRM7
- Other materials and thread types are available, consult the CMP website (www.cmp-products.com) for details.

CMP Products Limited on its sole responsibility, declares that the equipment referred to herein conforms to the requirements of the ATEX Directive 2014/34/EU and the following standards:-

EN60079-0:2012, EN60079-1:2007, EN60079-7:2007, EN 60079-31:2009

David Willcock - Certification Engineer (Authorised Person)

CMP Products Limited, Cramlington, UK, NE23 1WH

24th June 2015

Glasshouse Street • St. Peters • Newcastle upon Tyne • NE6 1BS

Tel: +44 191 265 7411 • Fax: +44 191 265 0581

E-Mail: cmp@cmp-products.com • Web: www.cmp-products.com



CE 0518

Notified Body: Sira Certification Service, Unit 6, Hawarden Industrial Park, Hawarden, CH5 3US, UK