

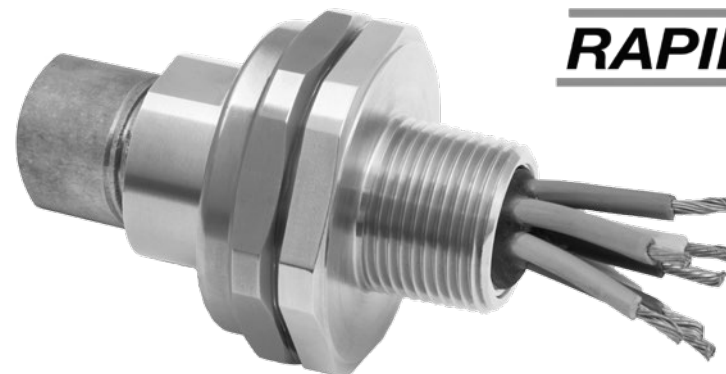


INSTALLATION INSTRUCTIONS FOR UNION TYPE PX780REX

UNION TYPE PX780REX FOR CONNECTING CONDUITS TO ENCLOSURES OR CONDUITS TO EACH OTHER USING RAPIDEX RESIN IN EXPLOSIVE ATMOSPHERES.

INCORPORATING EU ATTESTATION OF CONFORMITY TO DIRECTIVE [2014/34/EU]

TYPE PX780REX UNION



F1471		
	REVISION	DATE
IFS	6	16/11/16
ATEX / IECEx	5	5/16
cCSAus	5	5/16

TECHNICAL DATA

PRODUCT TYPE : PX780REX
INGRESS PROTECTION : IP66 when used with CMP sealing accessories
PROCESS CONTROL SYSTEM : BS EN ISO 9001 - 2000
 : ISO/IEC 80079-34:2011

EXPLOSIVE ATMOSPHERES CLASSIFICATION

ATEX CERTIFICATION No : SIRA10ATEX1306U
ATEX CERTIFICATION CODE : II 2 GD Ex d IIC Gb, Ex e IIC Gb, Ex ta IIIC Da IP6X
 : IM2 Ex d I Mb / Ex e I Mb

IECEx CERTIFICATION No : IECEx SIR.10.0148U
IECEx CERTIFICATION CODE : Ex d IIC Gb, Ex e IIC Gb, Ex d I Mb, Ex e I Mb, Ex ta IIIC Da IP6X
cCSAus CERTIFICATION CODE OF PROTECTION : 1055233
 : Class I, Div 1 and 2, Groups A,B,C and D; Enclosure Type 4X: Class I Zone 1, AEx de II; Ex de II

INSTALLATION INSTRUCTIONS

Installation should only be performed by a competent person using the correct tools. Spanners should be used for tightening. Read all instructions before beginning installation.

SPECIAL CONDITIONS FOR SAFE USE

1. Only one union is to be used with any single cable entry on the associated equipment.

ACCESSORIES

The following accessories are available from CMP Products, as optional extras, to assist with fixing, sealing and earthing :-
 Locknut | Earth Tag | Serrated Washer | Entry Thread (I.P.) Sealing Washer

Product Selection Table				METRIC				NPT				Diameter Over Cores	Max. Number of Cores	Posttrusion Length 'L'	Across Flats Hex	Across Corners Ø	Installation Torque (Nm)
Ordering Reference (Brass, Metric)	Male Forward Thread Size	Minimum Thread Length	Female Rear Thread Size	Ordering Reference (Brass, NPT)	Male Forward NPT Thread Size	Minimum NPT Thread Length (in)	Female Rear Thread Size										
PX780REXDM2M2	M20 X 1.5	15.0	M20 X 1.5	PX780REXDT1T1	1/2"	0.79	1/2"	12.6	11	36.0	46.0	50.6	7				
PX780REXDM3M3	M25 X 1.5	15.0	M25 X 1.5	PX780REXDT2T2	3/4"	0.80	3/4"	17.5	21	36.0	50.0	55.0	10				
PX780REXDM4M4	M32 X 1.5	15.0	M32 X 1.5	PX780REXDT3T3	1"	0.98	1"	23.6	38	36.0	60.0	66.0	15				
PX780REXDM5M5	M40 X 1.5	15.0	M40 X 1.5	PX780REXDT4T4	1-1/4"	1.01	1-1/4"	30.0	59	36.0	65.0	71.5	25				
PX780REXDM6M6	M50 X 1.5	15.0	M50 X 1.5	PX780REXDT5T5	1-1/2"	1.03	1-1/2"	41.0	89	36.0	75.0	82.5	30				
PX780REXDM7M7	M63 X 1.5	15.0	M63 X 1.5	PX780REXDT6T6	2"	1.06	2"	53.7	115	36.0	90.2	99.2	45				
PX780REXDM8M8	M75 X 1.5	15.0	M75 X 1.5	PX780REXDT7T7	2-1/2"	1.57	2-1/2"	64.3	140	39.0	99.3	109.2	45				
PX780REXDM9M9	M90 X 2.0	24.0	M90 X 2.0	PX780REXDT8T8	3"	1.63	3"	75.3	200	42.0	120.0	132.0	45				
PX780REXDM10M10	M100 X 2.0	24.0	M100 X 2.0	-	-	-	-	84.0	200	94.0	145.0	159.5	45				

All dimensions shown are in millimetres unless otherwise stated

Alternate thread types available
 Can be supplied with mixed thread types e.g. PX780REXDM10T10 - M100 male thread, 4"NPT female thread, please contact CMP for more information

CMP Products Limited on its sole responsibility declares that the equipment referred to herein conforms to the requirements of the ATEX Directive 2014/34/EU and the following standards:

EN 60079-0:2012+A11:2013, EN 60079-1:2014, EN 60079-7:2015, EN 60079-31:2014

David Willcock

David Willcock – Certification Engineer (Authorised Person)
 CMP Products Limited, Cramlington, NE23 1WH, UK
 24th June 2015

CE 0518

Glasshouse Street • St. Peters • Newcastle upon Tyne • NE6 1BS

Tel: +44 191 265 7411 • Fax: +44 191 715 464

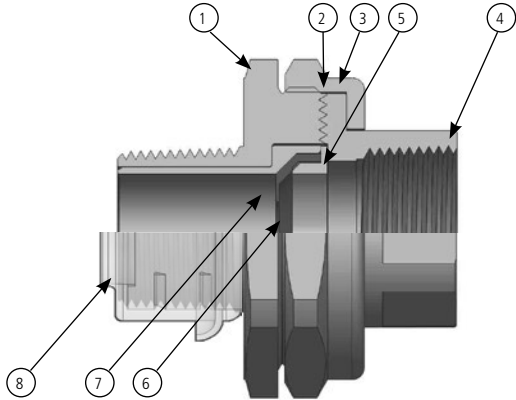
E-Mail: customerservices@cmp-products.co.uk • Web: www.cmp-products.com



INSTALLATION INSTRUCTIONS FOR CMP CABLE UNION PX780REX

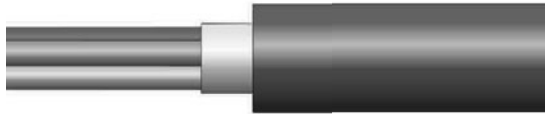
UNION COMPONENTS - It is not necessary to dismantle the union any further than illustrated below

- 1. Entry Item
- 2. Serrated Flamepath
- 3. Nut
- 4. Conduit Connector
- 5. Washer
- 6. Resin Dam
- 7. Compound Tube
- 8. Thread Shield



**NOTE: THERE IS NO NEED TO DISSASSEMBLE THE UNION
PLEASE READ ALL INSTRUCTIONS CAREFULLY BEFORE BEGINNING THE INSTALLATION**

1. Prepare the cable by removing the outer sheath from the cores so that they are exposed within the Compound Tube when finally assembled.



2. Remove any bedding or fillers from around the cable cores. If the cable cores have screens, these should be unwound and then twisted together to form a single core. This single core and/or any drain wires present should be sleeved with some heat shrink tubing.

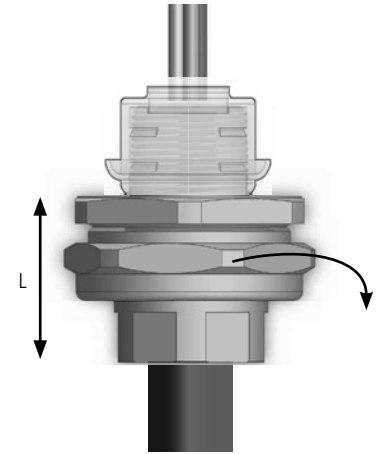


Electrical tape **MUST** be wrapped around the tips of the cable cores. This is to ensure the cable cores are together and also to cover any sharp edges that could potentially tear the Resin Dam during installation.

3. Feed the cables/cores through the union.

If the installation uses only cores (i.e. no cable sheath) then electrical tape must be wrapped around the cores at the position at which it will engage the resin dam.

Use the length of the union as a guide to position the tape as shown above (guide length "L")



4. Mix the Resin and apply as per RapidEx instructions.



5.1 When the Resin has cured the Entry Item (1) should be removed from the assembly and fully tightened into the apparatus.

5.2 Tighten the Conduit Connector (4) onto the conduit and then tighten to the Entry Item (1) using the Nut (3) to complete the installation.

