



INSTALLATION INSTRUCTIONS FOR UNION TYPE 784

UNION TYPE 784 FOR CONNECTING CONDUITS TO ENCLOSURES OR CONDUITS TO EACH OTHER IN EXPLOSIVE ATMOSPHERES.

INCORPORATING EC DECLARATION OF CONFORMITY TO DIRECTIVE 2014/34/EU

TYPE 784 UNION



TECHNICAL DATA

ADAPTOR TYPE : 784
 INGRESS PROTECTION : IP66
 PROCESS CONTROL SYSTEM : BS EN ISO 9001 - 2008
 : ISO/IEC 80079-34:2011

EXPLOSIVE ATMOSPHERES CLASSIFICATION

ATEX CERTIFICATION No : SIR A10ATEX1306U
 ATEX CERTIFICATION CODE : II 2 GD Exd IIC Gb / Exe IIC Gb / Ex ta IIIC Da IP6X
 : IIM 2 Ex d I Mb / Ex e I Mb

IECEx CERTIFICATION No : IECEx SIR.10.0148U
 IECEx CERTIFICATION CODE : Ex d IIC Gb / Ex e IIC Gb / Ex d I Mb / Ex e I Mb / Ex ta IIIC Da IP6X
 cCSAus CERTIFICATION No : 1055233

CODE OF PROTECTION : Class I, Div 1 & 2, Groups A,B,C,D ; Enclosure type 4X : Class I, Zone 1, AEx de II ; Ex de II

INSTALLATION INSTRUCTIONS

Installation should only be performed by a competent person using the correct tools. Spanners should be used for tightening. Read all instructions before beginning installation.

SPECIAL CONDITIONS FOR SAFE USE

1. Only one union is to be used with any single cable entry on the associated equipment.

ACCESSORIES

The following accessories are available from CMP Products, as optional extras, to assist with fixing, sealing and earthing :-
 Locknut | Earth Tag | Serrated Washer | Entry Thread (I.P.) Sealing Washer

Product Selection Table													
METRIC				NPT				Bore Diameter "C"	Max Protrusion Length "D"	Max Overhang Length "F"	Across Flats Hex "G"	Across Corners Ø "G"	Installation Torque (Nm)
Ordering Reference (Brass, Metric)	Male Forward Thread Size "A"	Minimum Thread Length "E"	Female Rear Thread Size "B"	Ordering Reference (Brass, NPT)	Male Forward NPT Thread Size "A"	Minimum NPT Thread Length "E" (in)	Female Rear Thread Size "B"						
784DM2M2	M20 X 1.5	15.0	M20 X 1.5	784DT1T1	1/2"	0.79	1/2"	14.3	60.6	55.8	46.0	50.6	7
784DM3M3	M25 X 1.5	15.0	M25 X 1.5	784DT2T2	3/4"	0.80	3/4"	20.1	65.9	61.2	50.0	55.0	10
784DM4M4	M32 X 1.5	15.0	M32 X 1.5	784DT3T3	1"	0.98	1"	26.4	69.3	69.7	60.0	66.0	15
784DM5M5	M40 X 1.5	15.0	M40 X 1.5	784DT4T4	1-1/4"	1.01	1-1/4"	32.6	74.9	76.4	65.0	71.5	25
784DM6M6	M50 X 1.5	15.0	M50 X 1.5	784DT5T5	1-1/2"	1.03	1-1/2"	43.0	93.5	87.9	75.0	82.5	30
784DM7M7	M63 X 1.5	15.0	M63 X 1.5	784DT6T6	2"	1.06	2"	53.0	102.7	102.8	90.2	99.2	45

All dimensions shown are in millimetres unless otherwise stated

For material options please add the following suffix to the Ordering Reference; Brass (no suffix required), Nickel Plated Brass "5", 316 Grade Stainless Steel "4", Copper Free Aluminium "1"

I, the undersigned, hereby declare that the equipment referred to herein conforms to the requirements of the ATEX Directive 2014/34/EU and the following standards:-

EN60079-0:2009, EN 60079-1:2007, EN60079-7:2007, EN60079-31:2009

David Willcock

David Willcock - Certification Engineer (Authorised Person)

Glasshouse Street • St. Peters • Newcastle upon Tyne • NE6 1BS
 Tel: +44 191 265 7411 • Fax: +44 1670 715 464
 E-Mail: customerservices@cmp-products.co.uk • Web: www.cmp-products.com



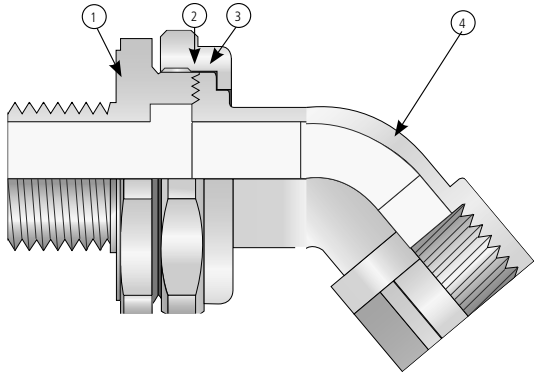
CE 0518

Notified Body: Sira Certification Service, Rake Lane, Chester CH4 9JN, England.

www.cmp-products.com

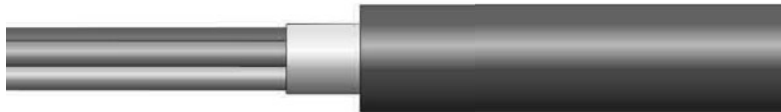
INSTALLATION INSTRUCTIONS FOR CMP UNION TYPES 784

- 1. Entry Item
- 2. Serrated Flamepath
- 3. Nut
- 4. 45° Conduit Connector

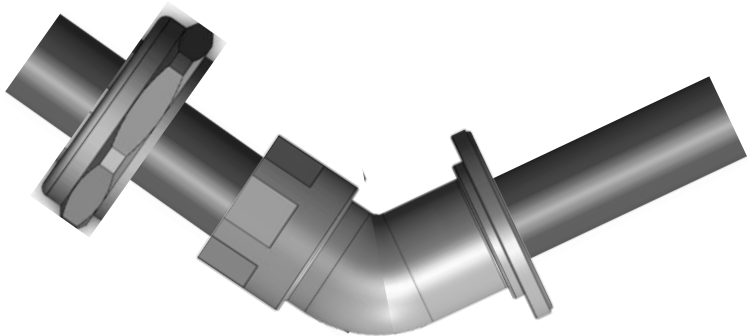


PLEASE READ ALL INSTRUCTIONS CAREFULLY BEFORE BEGINNING THE INSTALLATION

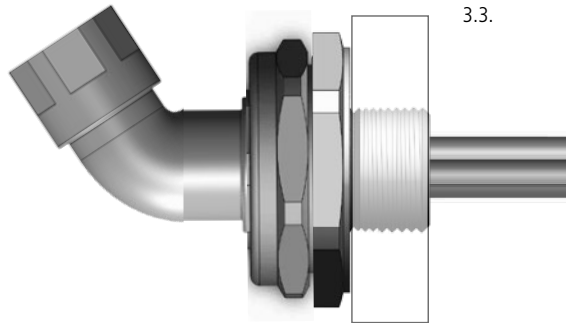
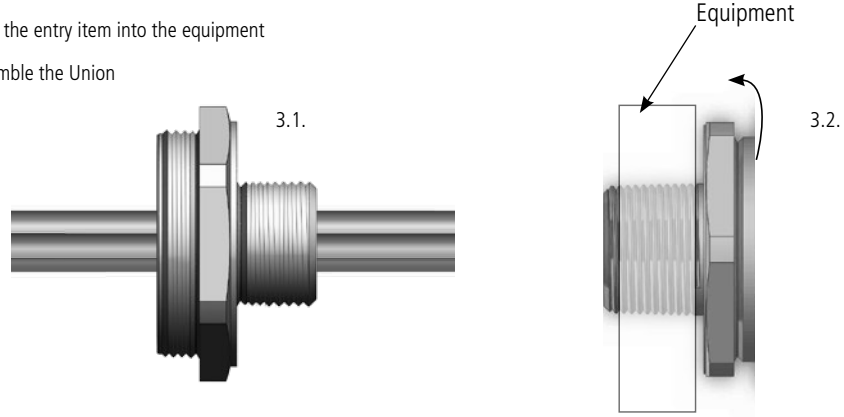
1. Prepare the cable by removing the outer sheath if necessary.



2. Unscrew the Nut (3) and the Conduit connector (4) and pass down the cable/cores



- 3.1. Feed the cables/cores through the Entry Item
- 3.2. Tighten the entry item into the equipment
- 3.3. Reassemble the Union



5. Tighten the Conduit Connector (4) onto the conduit to complete the installation.

