



TECHNICAL DATA

ADAPTOR TYPE : 783, 793
 INGRESS PROTECTION : IP66, IP67 & IP68 (when fitted with CMP sealing accessories)
 SERVICE TEMPERATURE : -60 to +200°C
 PROCESS CONTROL SYSTEM : BS EN ISO 9001 - 2008
 ISO/IEC 80079-34:2011

EXPLOSIVE ATMOSPHERES CLASSIFICATION

ATEX CERTIFICATION No : SIRA16ATEX1234U
 ATEX CERTIFICATION CODE : II 2G Ex db IIC Gb, Ex eb IIC Gb, II 1D Ex ta IIIC Da Ex IM2 Ex db I Mb, Ex eb I Mb
 IECEx CERTIFICATION No : IECEx SIR16.0081U
 IECEx CERTIFICATION CODE : Ex db I Mb, Ex eb I Mb, Ex db IIC Gb, Ex eb IIC Gb, Ex ta IIIC Da
 EAC / TC RU CERTIFICATION No : M20: TC RU C-GB.M1062.B.04359 M25, M32: TC RU C-GB.M1062.B.04845

IMPORTANT NOTES FOR INSTALLERS

1. Read all instructions before beginning installation. Installation shall only be performed by competent, suitably trained personnel (in accordance with EN/IEC 60079-14) using the correct tools; spanners should be used for tightening.
2. Inspection and maintenance shall only be performed by competent, suitably trained personnel (in accordance with EN/IEC 60079-14 (Initial Inspection) and EN/IEC 60079-17).
3. Ingress Protection Statement; The interface between a cable entry device and its associated enclosure / cable entry cannot be defined. It is the user's responsibility to ensure that a minimum protection level (IP54 for explosive gas atmospheres and IP6X for explosive dust atmospheres) is maintained at the interface. Entry component threads may need additional sealing to maintain the ingress protection rating and/or restricted breathing performance as applicable to the equipment to which it will be attached, such as by either a sealing washer or thread sealant. Reference should also be made to the information from EN 60079-14:2014, Clause 10, Table 10, (Note: When fitted to a threaded entry, all tapered threads will automatically provide an ingress protection rating of IP6X).
4. Adaptors are manufactured from Brass, Nickel Plated Brass, Stainless Steel or Mild Steel. The end user shall consider the performance of these materials with regard to attack by aggressive substances that may be present in the hazardous area. Consideration should be given to potential degradation due to galvanic corrosion at the interface of dis-similar metallic materials.
5. It is the end user's responsibility to ensure the equipment materials are suitable for their final installation location. If in doubt consult CMP Products Limited.
6. Ex db marked Adaptors can only be supplied with metric or NPT entry threads.

SPECIAL CONDITIONS FOR SAFE USE

None

Product Selection Table

Product	Ordering Reference	Bore Diameter	Thread 1* (Entry Thread)	Thread 2*	Thread 3*	Thread Length	Protrusion Length 'Y'	Protrusion Length 'Z'	Width
793	793DM2MM2FM2F	14.7	M20	M20	M20	15.0	36.5	66.0	25 - 27
793	793DT1MT1FT1F	14.7	1/2" NPT	1/2" NPT	1/2" NPT	19.9	33.0	66.0	25 - 27
793	793DM3MM3FM3F	18.9	M25	M25	M25	15.0	45.0	70.5	30 - 32
793	793DT2MT2FT2F	18.9	3/4" NPT	3/4" NPT	3/4" NPT	20.2	40.0	70.5	30 - 32
793	793DM4MM4FM4F	25.9	M32	M32	M32	15.0	56.5	83.5	37 - 39
793	793DT3MT3FT3F	25.9	1" NPT	1" NPT	1" NPT	25.0	46.5	83.5	37 - 39
783	783DM2MM2FM2F	14.7	M20	M20	M20	15.0	48.0	73.0	25 - 27
783	783DT1MT1FT1F	14.7	1/2" NPT	1/2" NPT	1/2" NPT	19.9	43.0	73.0	25 - 27
783	783DM3MM3FM3F	18.9	M25	M25	M25	15.0	48.0	76.9	30 - 32
783	783DT2MT2FT2F	18.9	3/4" NPT	3/4" NPT	3/4" NPT	20.2	48.0	76.9	30 - 32
783	783DM4MM4FM4F	25.9	M32	M32	M32	15.0	56.5	92.5	37 - 39
783	783DT3MT3FT3F	25.9	1" NPT	1" NPT	1" NPT	25.0	56.5	92.5	37 - 39

All dimensions shown are in millimetres unless otherwise stated

e.g. 783 - D - M - 2 - M - M - 2 - F - M - 2 - F - 5
 = Dual Certified Ex d & Ex e - M20 (M) x M20 (F) x M20 (F) - Nickel Plated Brass

* Any combination of Male (M) / Female (F) threads is available e.g.
 (M) X (M) X (M), (F) X (F) X (F), (M) X (F) X (M)

ACCESSORIES

The following accessories are available from CMP Products, as optional extras, to assist with fixing, sealing and earthing:
 Locknut | Earth Tag | Serrated Washer | Entry Thread (I.P.) Sealing Washer

CMP Products Limited on its sole responsibility declares that the equipment referred to herein conforms to the requirements of the ATEX Directive 2014/34/EU and the following standards:

IEC 60079-0:2011 Ed6, IEC 60079-1:2014 Ed7, IEC 60079-7:2015 Ed5, IEC 60079-31:2013 Ed2
 EN 60079-0:2012/A11:2013, EN 60079-1:2014, EN 60079-7:2015, EN 60079-31:2014

David Willcock - Certification Engineer (Authorised Person)
 CMP Products Limited, Cramlington, NE23 1WH
 13th July 2016

Glasshouse Street • St. Peters • Newcastle upon Tyne • NE6 1BS
 Tel: +44 191 265 7411 • Fax: +44 (0) 1670 715646

E-Mail: customerservices@cmp-products.com • Web: www.cmp-products.com



0518

Notified Body: Sira Certification Service, Hawarden Industrial Park, Harwarden, CH5 3US, England.

www.cmp-products.com

ASSEMBLY FITTING INSTRUCTIONS FOR INSTALLATION OF CMP Y AND T ADAPTOR TYPE 783(Y), 793(T)

INCORPORATING EU ATTESTATION OF CONFORMITY TO DIRECTIVE [2014/34/EU]

783(Y) & 793(T) DUAL ENTRY ADAPTOR



783 - Y ADAPTOR (Pictured)
 793 - T ADAPTOR



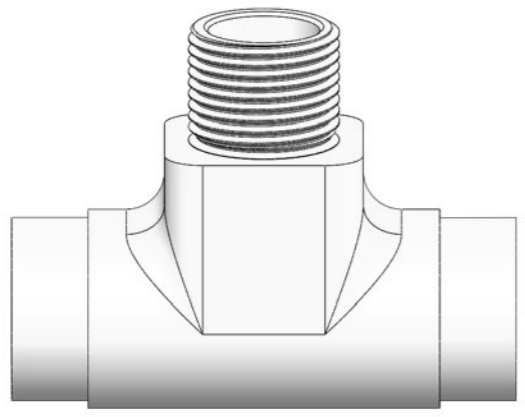
CMP Document No. F1516 REV 4



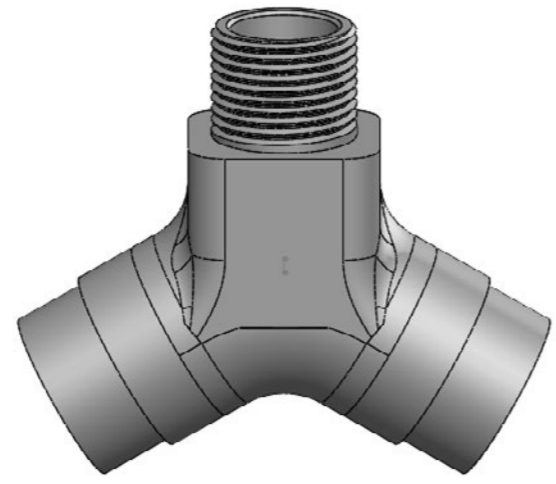
Logos shown for illustration purposes only. Please check certification for details

INSTALLATION INSTRUCTIONS FOR CMP ACCESSORY 783(Y), 793(T)

Fitting instructions relevant for both Y and T adaptors

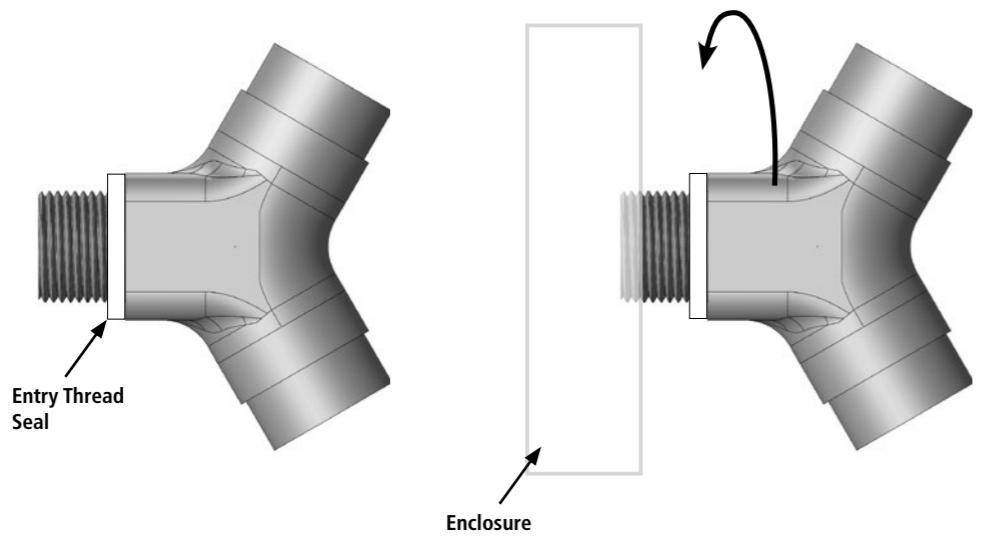


793 - T ADAPTOR

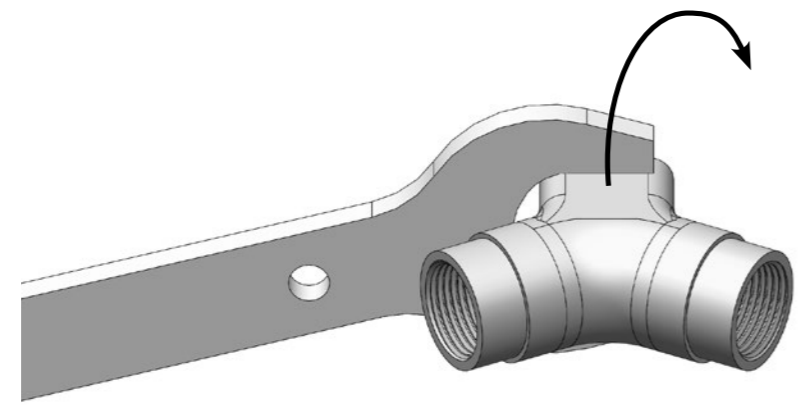


783 - Y ADAPTOR (Pictured)

- 1. Add entry thread seal if required
Tighten into enclosure / equipment by hand initially



- 2. Complete tightening with spanner if necessary



NPT threads will lock before all threads are used

- 3. Attach further equipment / cable glands to remaining entries

