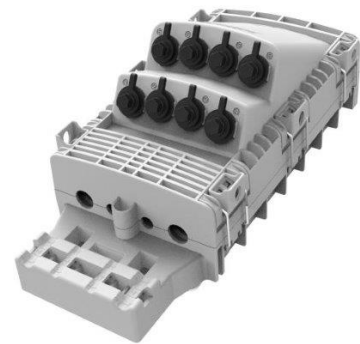


Mini Optical Terminal Enclosure (Mini-OTE 200 Series)

Global Communications

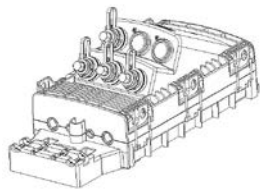
CommScope's new Mini-OTE 200 series terminals are a unique solution for splicing, termination and pass-through cable requirements in FTTx architectures. These terminals are equipped with pre-connectorized hardened adapter ports and are fully compatible with full-size OptiTap® systems, as well as miniaturized DLX® systems. This field-friendly feature enables speedy fiber deployments for new subscriber activation and services, while also minimizing labor costs associated with service calls. The Mini-OTE 200 design ensures seamless integration into existing infrastructure. Sealed in a gasketed, hardened plastic enclosure, these terminals provide reliable, robust performance in any outside plant environment and are suitable for wall*, pedestal, pole or hand-hole applications.



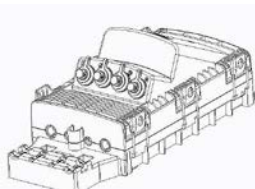
Features:

- Butt design with hardened 4-port and 6-port designs that support full-size, as well as miniaturized connections, and an 8-port design that supports miniaturized connections.
- 2 wrap-around ports for looped feeder cable (Ø4-15mm).
- 2 wrap-around branch-off cable ports (Ø 4 - 9 mm or flat 4,5 x 8,1 mm). For smaller feeder cables (Ø4 - 8,4mm), an extra cable sealing spacer is required.
- Housing provides loop storage for μ -gain or loose-tube cable.
- Equipped with 2 splice trays which accommodate up to 12 splices per tray.
- Additional tray included for fiber storage.
- Internal TENIO cable attachment included.
- External cable fixation is integrated on the housing for easy installation.
- Wall*, pedestal or pole mountable.

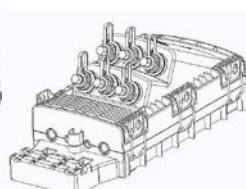
*Not UL listed.



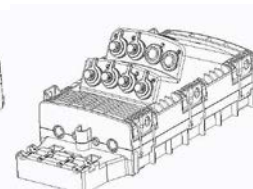
4-port (full-size)



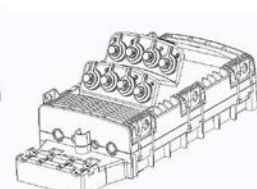
4-port (miniaturized)



6-port (full-size)



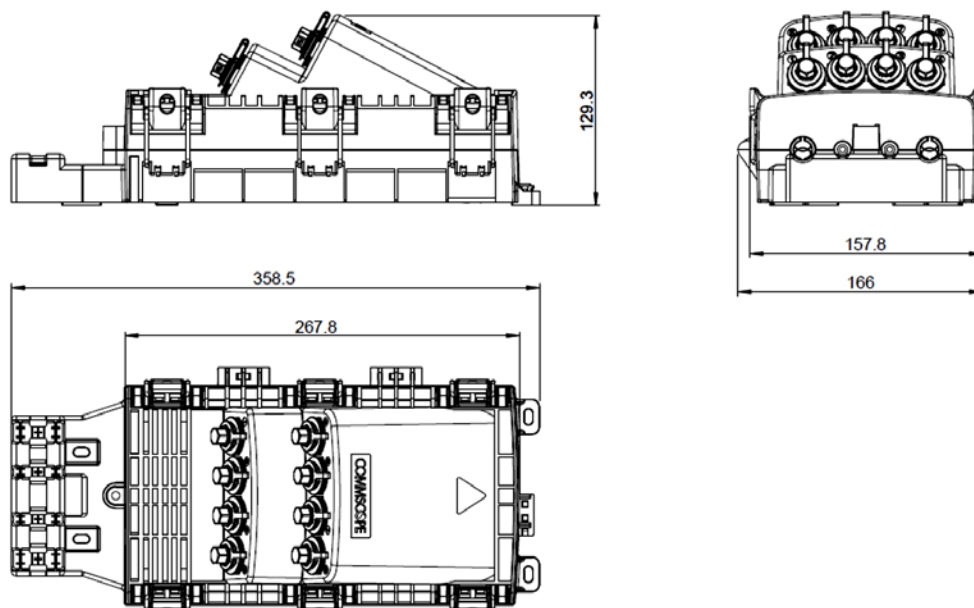
6-port (miniaturized)



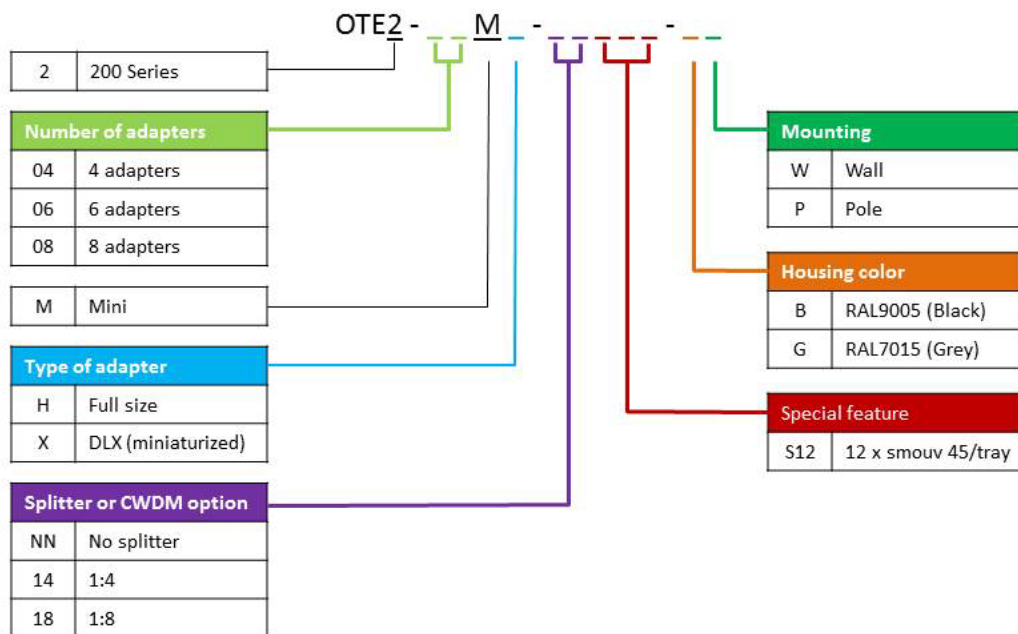
8-port (miniaturized)

Specifications:

Please visit [Product Catalog](#) for more information.



Ordering Information:



Compatible with Full-Size OptiTap® FTTx Systems			
Model Number	No. of Ports	Splitter Type	Color
OTE2-04MH-NN-S12-B-W	4-port	-	Black
OTE2-04MH-NN-S12-G-W	4-port	-	Gray
OTE2-04MH-14-S12-B-W	4-port	1:4	Black
OTE2-04MH-14-S12-G-W	4-port	1:4	Gray
OTE2-06MH-NN-S12-B-W	6-port	-	Black
OTE2-06MH-NN-S12-G-W	6-port	-	Gray
Compatible with Miniaturized DLX® FTTx Systems			
Model Number	No. of Ports	Splitter Type	Color
OTE2-04MX-NN-S12-B-W	4-port	-	Black
OTE2-04MX-NN-S12-G-W	4-port	-	Gray
OTE2-04MX-14-S12-B-W	4-port	1:4	Black
OTE2-04MX-14-S12-G-W	4-port	1:4	Gray
OTE2-06MX-NN-S12-B-W	6-port	-	Black
OTE2-06MX-NN-S12-G-W	6-port	-	Gray
OTE2-08MX-NN-S12-B-W	8-port	-	Black
OTE2-08MX-NN-S12-G-W	8-port	-	Gray
OTE2-08MX-18-S12-B-W	8-port	1:8	Black
OTE2-08MX-18-S12-G-W	8-port	1:8	Gray

Accessories:

Model Number	Description
OTE-M-SKG1-4/8	Mini-OTE2 seal kit gel for feeder cables 4 - 8,4mm
OTE-M-POLEBRKT	Mini-OTE2 pole bracket kit
TENIO-CTU-L-(10)	TENIO cable termination unit



OTE-M-SKG1-4/8



OTE-M-POLEBRKT



TENIO-CTU-L-(10)

For more information, contact a CommScope representative or visit us [online](#).