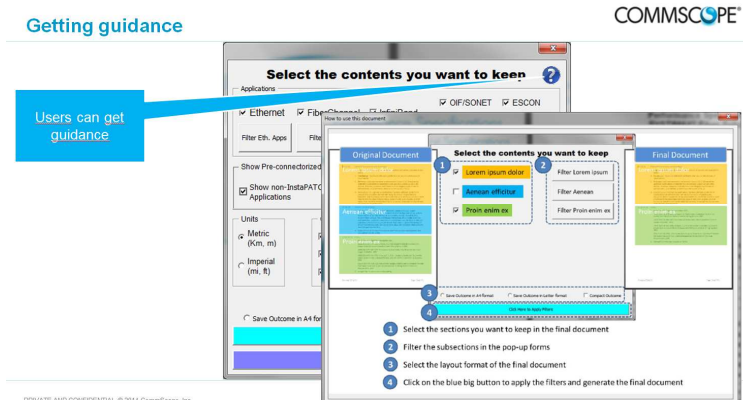
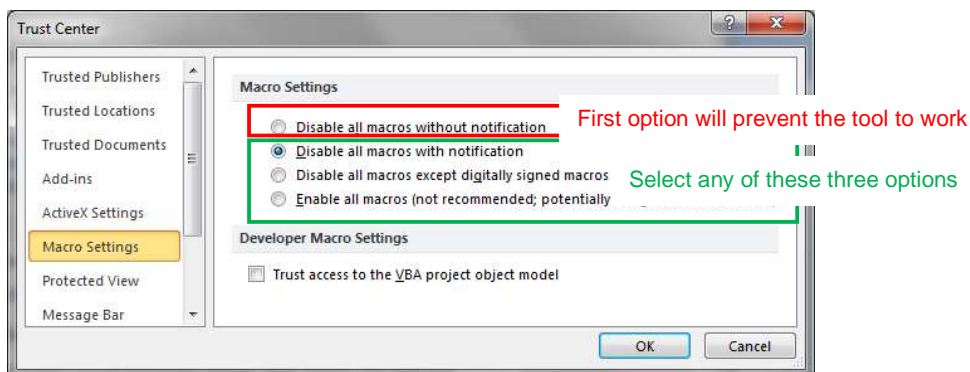


## Instructions to set up the Smart Fiber Performance Specifications 2015 v1

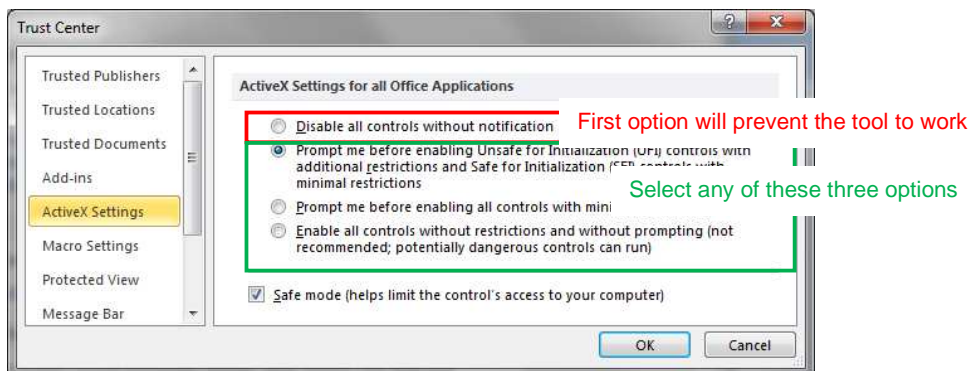
- Extract all files from the .zip to a folder of your choice. **Don't open the files from the .zip**
- You can open the PDF presentation to get usage guidelines



- Ensure you have the proper Trust Center Settings in Office
  - Macro Settings



- ActiveX Settings



- Open Smart\_Fiber\_PerfSpecs\_2015\_v1.docm
- Enjoy!

NOTE: Last year, Microsoft released an update that may interfere with the use of Excel forms. In case you experience weird errors (run time errors, such as error 438, 1004, etc.) run the Microsoft "Fix it" included in the zip file. Most probably it will solve the problem.

<http://support.microsoft.com/kb/3025036/en-us>

