



Uniprise® Solutions

Ready™ Fiber Solution

with ReadyPATCH® Pre-terminated Fiber Solution

Modular performance



CONFIGURATION IS EASY

- Step 1: Select Ready Shelf or Wall Mount
- Step 2: Select ReadyPATCH Modules or Adapter Panels
- Step 3: Select Trunk Cables
- Step 4: Select Equipment Cables
- Step 5: Select Patch Cords
- Step 6: Select Accessories

Uniprise® Ready™ products are designed for value, reliable performance and simplicity. The Uniprise Ready fiber shelves, Ready wall mount units and ReadyPATCH® pre-terminated solutions more than live up to these standards. From simple to complex network architectures, you won't find an easier fiber solution to deploy.

Ready shelves and wall mounts are ready for anything from updating or expanding telecommunications closets to risers to small data centers in intelligent buildings, education and government structures. Ready internal sliding shelves and locking wall mounts share a common panel-style footprint with all Ready system fiber connector panels and modules enabling field termination, field splicing and factory termination in a single unit. This modular concept allows users to adopt new technologies and fiber architectures over time by simply replacing modular Ready components in deployed Ready shelves and wall mount units. Simplifying initial installation while enabling easy network upgrades, the Ready modular design provides a future-ready platform for all fiber deployments.

Ready fiber shelves are available in 1U, 2U and 4U configurations. Holding 3 fiber panels or pre-terminated modules per 1U, Ready shelves can support up to 36 duplex LC (72 fibers) or 24 MPO pass through adapters (288 fibers) in each 1U of space.

Ready wall mount units are available in 2-, 4- and 8-panel configurations. Requiring only 1 square foot of wall space, these units support up to 48, 96 and 192 fibers or 16, 32 and 64 MPO pass through adapters respectively. These locking wall mount units provide needed security for low-security environments.

The common footprint of fiber panels and pre-terminated modules of Ready products support LC, SC, ST and MPO connector deployments. Ready fiber panels enable field termination and field splicing with associated splice kits (ordered separately). Pre-terminated ReadyPATCH modules combined with factory-terminated, factory-tested hardware, backbone trunk cables, ruggedized MPO single-fiber fanout patch cords, array cords and standard fiber patch cords enable fiber infrastructure installation up to 8 times faster than field termination options.

Supporting LazrSPEED® OM4 and OM3 multimode, OptiSPEED® OM1 multimode and TeraSPEED® single-mode fiber technologies, the Ready fiber solution is ideal for a variety of applications and networking environments. This easy-to-deploy, modular connectivity solution is ready to deliver high-value performance you can rely on for years to come.



Ready 1U, 2U, 4U Shelves installed (closed)



1U Internal Sliding Shelf

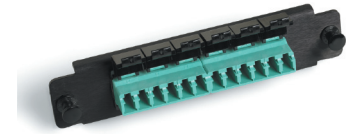
STEP 1: Select Ready Shelf or Wall Mount

Material ID	Product Number	Description
760147439	RFE-SLC-IS-EMT-BK/1U-PNL	Ready 1U Internal Sliding Shelf, black
760147447	RFE-SLC-IS-EMT-BK/2U-PNL	Ready 2U Internal Sliding Shelf, black
760147454	RFE-SLC-IS-EMT-BK/4U-PNL	Ready 4U Internal Sliding Shelf, black
760147496	WBE-EMT-BK/2P-PNL	Ready 2P Wall Mount Enclosure, black
760147504	WBE-EMT-BK/4P-PNL	Ready 4P Wall Mount Enclosure, black
760147512	WBE-EMT-BK/8P-PNL	Ready 8P Wall Mount Enclosure, black

STEP 2: Select Adapter Panels or ReadyPATCH Modules

STANDARD ADAPTER PANELS

Material ID	Catalog Number	Description
760148171	PNL-BK-024-MFA-LC02-AQ-NS	LazrSPEED® LC, 24 Fiber, Aqua Duplex Adapter, black panel, no shutter
760148056	PNL-BK-012-MFA-LC12-AQ	LazrSPEED® LC, 12 Fiber, Aqua Ganged Adapter, black panel
760148130	PNL-BK-012-MFA-SC01-AQ	LazrSPEED® SC, 12 Fiber, Aqua Simplex Adapter, black panel
760147975	PNL-BK-006-MFA-SC06-AQ	LazrSPEED® SC, 6 Fiber, Aqua Ganged Adapter, black panel
760148015	PNL-BK-006-MFA-ST06-AQ	LazrSPEED® ST, 6 Fiber, Aqua Ganged Adapter, black panel
760148189	PNL-BK-024-MFA-LC02-BG-NS	OptiSPEED® LC, 24 Fiber, Beige Duplex Adapter, black panel, no shutter
760148064	PNL-BK-012-MFA-LC12-BG	OptiSPEED® LC, 12 Fiber, Beige Ganged Adapter, black panel
760148148	PNL-BK-012-MFA-SC01-BG	OptiSPEED® SC, 12 Fiber, Beige Simplex Adapter, black panel
760147983	PNL-BK-006-MFA-SC06-BG	OptiSPEED® SC, 6 Fiber, Beige Ganged Adapter, black panel
760148114	PNL-BK-006-MFA-SC02-BG	OptiSPEED® SC, 6 Fiber, Beige Duplex Adapter, black panel
760148098	PNL-BK-006-MFA-ST01	OptiSPEED® ST, 6 Fiber, Beige Ganged Adapter, black panel
760148023	PNL-BK-006-MFA-ST06-BG	OptiSPEED® ST, 6 Fiber, Beige Ganged Adapter, black panel
760148361	PNL-BK-024-SFA-LC02-BL-NS	TeraSPEED® LC, 24 Fiber, Blue Duplex Adapter, black panel, no shutter
760148254	PNL-BK-012-SFA-LC12-BL	TeraSPEED® LC, 12 Fiber, Blue Ganged Adapter, black panel
760147637	PNL-BK-012-AFA-LC12-GR	TeraSPEED® LC Angled, 12 Fiber, Green Ganged Adapter, black panel
760148346	PNL-BK-012-SFA-SC01-BL	TeraSPEED® SC, 12 Fiber, Blue Simplex Adapters, black panel
760148338	PNL-BK-012-AFA-SC01-GR	TeraSPEED® SC Angled, 12 Fiber, Green Simplex Adapter, black panel
760147652	PNL-BK-006-AFA-SC06-GR	TeraSPEED® SC Angled, 6 Fiber, Green Ganged Adapter, black panel
760148312	PNL-BK-006-SFA-SC02-BL	TeraSPEED® SC, 6 Fiber, Blue Duplex Adapters, black panel
760148213	PNL-BK-006-SFA-SC06-BL	TeraSPEED® SC, 6 Fiber, Blue Ganged Adapter, black panel
760148270	PNL-BK-006-SFA-SC01-BL	TeraSPEED® SC, 6 Fiber, Blue Simplex Adapters, black panel
760148239	PNL-BK-006-SFA-ST06-BL	TeraSPEED® ST, 6 Fiber, Blue Ganged Adapter, black panel
760148288	PNL-BK-006-SFA-ST01	TeraSPEED® ST, 6 Fiber, Simplex Adapters, black panel



LC Adapter Panel



SC Standard Adapter Panel



ST Standard Adapter Panel



**Wall Mount Building Enclosure,
8P (Shown with Standard and
Keyed ReadyPATCH Modules)**

KEYED ADAPTER PANELS

Material ID	Catalog Number	Description
760147876	PNL-BK-024-KFA-LC02-AQ-NS	Keyed LC Aqua, 24 Fiber, black panel, no shutter
760147884	PNL-BK-024-KFA-LC02-BL-NS	Keyed LC Blue, 24 Fiber, black panel, no shutter
760147892	PNL-BK-024-KFA-LC02-BR-NS	Keyed LC Brown, 24 Fiber, black panel, no shutter
760147900	PNL-BK-024-KFA-LC02-GR-NS	Keyed LC Green, 24 Fiber, black panel, no shutter
760147918	PNL-BK-024-KFA-LC02-OR-NS	Keyed LC Orange, 24 Fiber, black panel, no shutter
760147926	PNL-BK-024-KFA-LC02-RD-NS	Keyed LC Red, 24 Fiber, black panel, no shutter
760147934	PNL-BK-024-KFA-LC02-RO-NS	Keyed LC Rose, 24 Fiber, black panel, no shutter
760147942	PNL-BK-024-KFA-LC02-SL-NS	Keyed LC Slate, 24 Fiber, black panel, no shutter
760147959	PNL-BK-024-KFA-LC02-VI-NS	Keyed LC Violet, 24 Fiber, black panel, no shutter
760147967	PNL-BK-024-KFA-LC02-YL-NS	Keyed LC Yellow, 24 Fiber, black panel, no shutter
760147777	PNL-BK-012-KFA-LC02-AQ-NS	Keyed LC Aqua, 12 Fiber, black panel, no shutter
760147785	PNL-BK-012-KFA-LC02-BL-NS	Keyed LC Blue, 12 Fiber, black panel, no shutter
760147793	PNL-BK-012-KFA-LC02-BR-NS	Keyed LC Brown, 12 Fiber, black panel, no shutter
760147801	PNL-BK-012-KFA-LC02-GR-NS	Keyed LC Green, 12 Fiber, black panel, no shutter
760147819	PNL-BK-012-KFA-LC02-OR-NS	Keyed LC Orange, 12 Fiber, black panel, no shutter
760147827	PNL-BK-012-KFA-LC02-RD-NS	Keyed LC Red, 12 Fiber, black panel, no shutter
760147835	PNL-BK-012-KFA-LC02-RO-NS	Keyed LC Rose, 12 Fiber, black panel, no shutter
760147843	PNL-BK-012-KFA-LC02-SL-NS	Keyed LC Slate, 12 Fiber, black panel, no shutter
760147850	PNL-BK-012-KFA-LC02-VI-NS	Keyed LC Violet, 12 Fiber, black panel, no shutter
760147868	PNL-BK-012-KFA-LC02-YL-NS	Keyed LC Yellow, 12 Fiber, black panel, no shutter

STANDARD READYPATCH PRE-TERMINATED MODULES

Material ID	Catalog Number	Description
760039685	RFE-MOD-024-5L-MPO-LC02	24F, LC, Laser Optimized, 50 µm, Multimode
760044818	RFE-MOD-024-6F-MPO-LC02	24F, LC, 62.5 µm, Multimode
760039701	RFE-MOD-024-8W-MPO-LC02	24F, LC, Single-mode
760039727	RFE-MOD-012-5L-MPO-LC02	12F, LC, Laser Optimized, 50 µm, Multimode
760044826	RFE-MOD-012-6F-MPO-LC02	12F, LC, 62.5 µm, Multimode
760039743	RFE-MOD-012-8W-MPO-LC02	12F, LC, Single-mode
760039768	RFE-MOD-012-5L-MPO-SC02	12F, SC, Laser Optimized, 50 µm, Multimode
760044834	RFE-MOD-012-6F-MPO-SC02	12F, SC, 62.5 µm, Multimode
760039784	RFE-MOD-012-8W-MPO-SC02	12F, SC, Single-mode



**2U Internal Sliding Shelf
(Shown with Standard ReadyPATCH Modules)**

KEYED READYPATCH PRE-TERMINATED MODULES

Material ID	Catalog Number	Description
760087593	RFE-MOD-024-5L-MPO-LC02-KGR	24F, LC, Laser Optimized, 50 µm, Multimode, Keyed Green
760094615	RFE-MOD-024-5L-MPO-LC02-KRD	24F, LC, Laser Optimized, 50 µm, Multimode, Keyed Red
760094623	RFE-MOD-024-5L-MPO-LC02-KYL	24F, LC, Laser Optimized, 50 µm, Multimode, Keyed Yellow
760087551	RFE-MOD-024-6F-MPO-LC02-KBL	24F, LC, 62.5 µm, Keyed Blue
760087619	RFE-MOD-024-6F-MPO-LC02-KGR	24F, LC, 62.5 µm, Keyed Green
760087700	RFE-MOD-024-6F-MPO-LC02-KRD	24F, LC, 62.5 µm, Keyed Red
760087734	RFE-MOD-024-6F-MPO-LC02-KYL	24F, LC, 62.5 µm, Keyed Yellow
760087544	RFE-MOD-024-8W-MPO-LC02-KBL	24F, LC, Single-mode, Keyed Blue
760087601	RFE-MOD-024-8W-MPO-LC02-KGR	24F, LC, Single-mode, Keyed Green
760087692	RFE-MOD-024-8W-MPO-LC02-KRD	24F, LC, Single-mode, Keyed Red
760087726	RFE-MOD-024-8W-MPO-LC02-KYL	24F, LC, Single-mode, Keyed Yellow
760087858	RFE-MOD-012-5L-MPO-LC02-KBL	12F, LC, Laser Optimized, 50 µm, Multimode, Keyed Blue
760087916	RFE-MOD-012-5L-MPO-LC02-KGR	12F, LC, Laser Optimized, 50 µm, Multimode, Keyed Green
760088005	RFE-MOD-012-5L-MPO-LC02-KRD	12F, LC, Laser Optimized, 50 µm, Multimode, Keyed Red
760088039	RFE-MOD-012-5L-MPO-LC02-KYL	12F, LC, Laser Optimized, 50 µm, Multimode, Keyed Yellow
760087874	RFE-MOD-012-6F-MPO-LC02-KBL	12F, LC, 62.5 µm, Keyed Blue
760087932	RFE-MOD-012-6F-MPO-LC02-KGR	12F, LC, 62.5 µm, Keyed Green
760088021	RFE-MOD-012-6F-MPO-LC02-KRD	12F, LC, 62.5 µm, Keyed Red
760088054	RFE-MOD-012-6F-MPO-LC02-KYL	12F, LC, 62.5 µm, Keyed Yellow
760087866	RFE-MOD-012-8W-MPO-LC02-KBL	12F, LC, Single-mode, Keyed Blue
760087924	RFE-MOD-012-8W-MPO-LC02-KGR	12F, LC, Single-mode, Keyed Green
760088013	RFE-MOD-012-8W-MPO-LC02-KRD	12F, LC, Single-mode, Keyed Red
760088047	RFE-MOD-012-8W-MPO-LC02-KYL	12F, LC, Single-mode, Keyed Yellow



Standard ReadyPATCH Modules



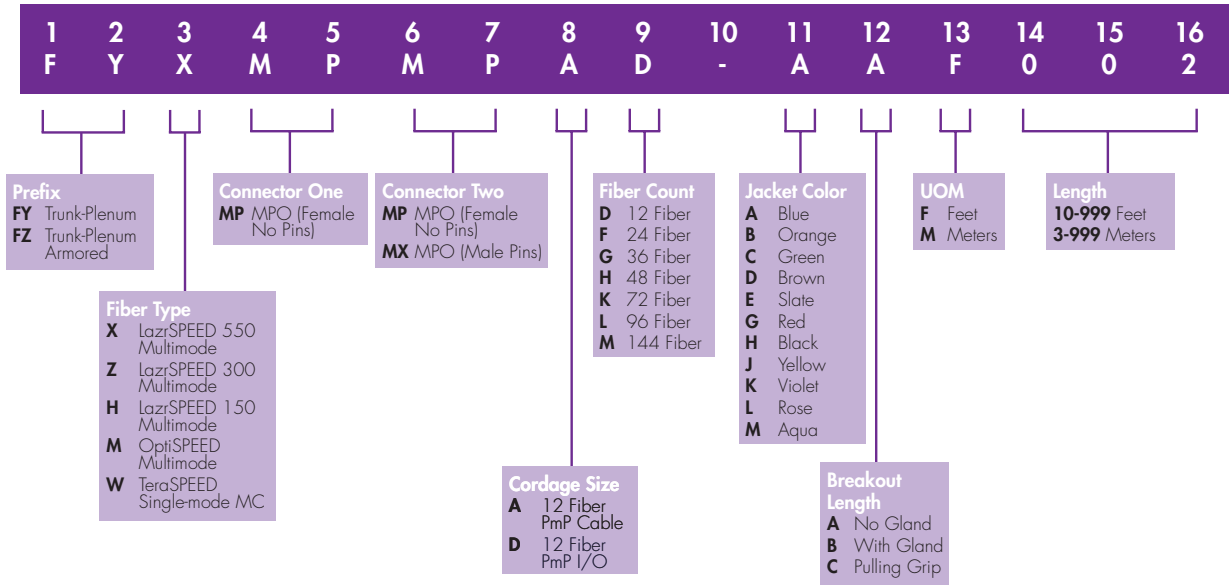
Keyed ReadyPATCH Modules



**4U Internal Sliding Shelf
(Shown with Standard and Keyed ReadyPATCH Modules)**

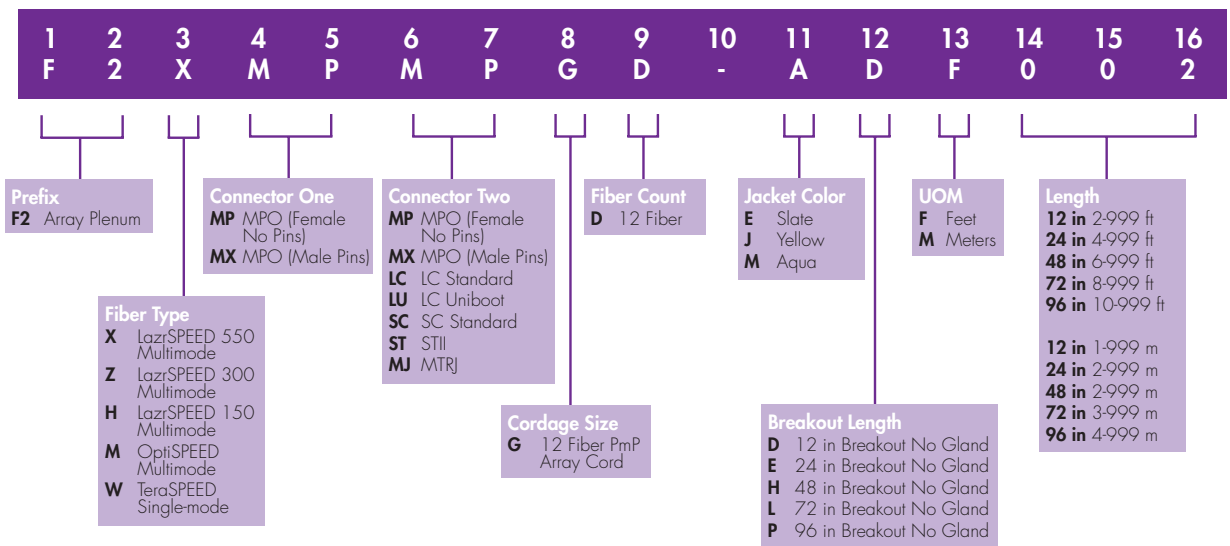
STEP 3: SELECT trunk cables

Trunk Cables (Product Code Configurator)

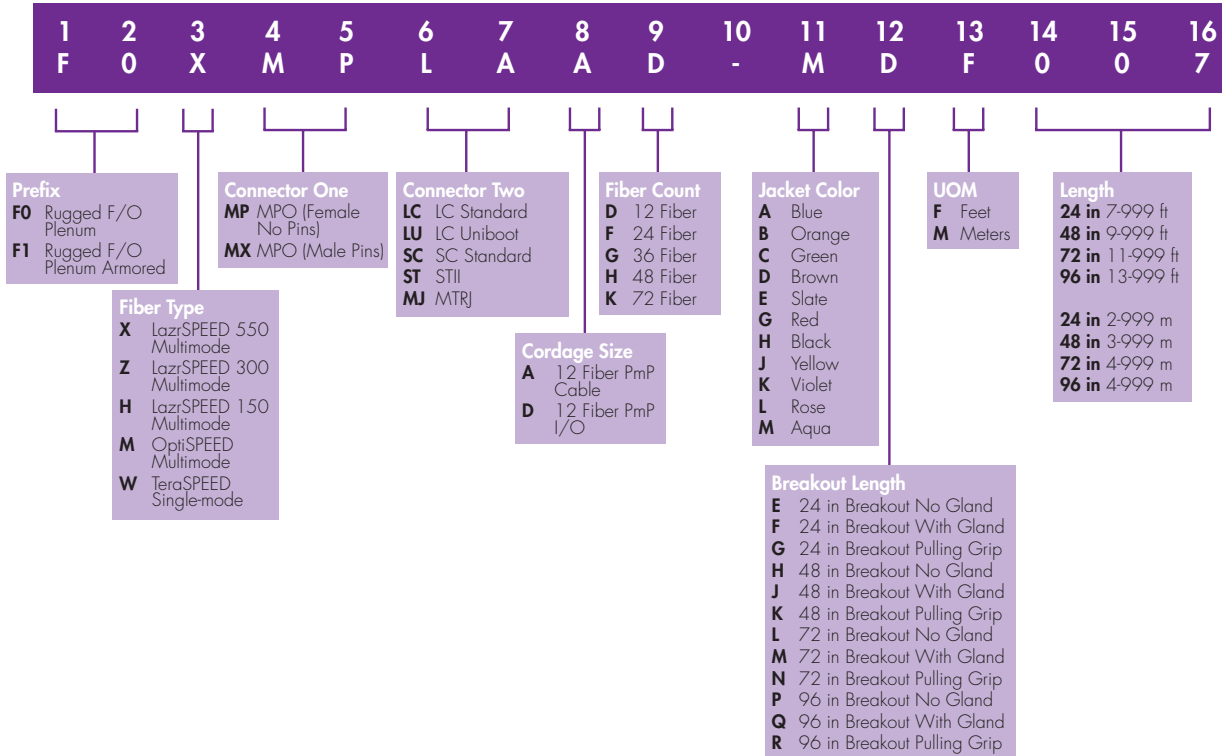


STEP 4: SELECT equipment cables

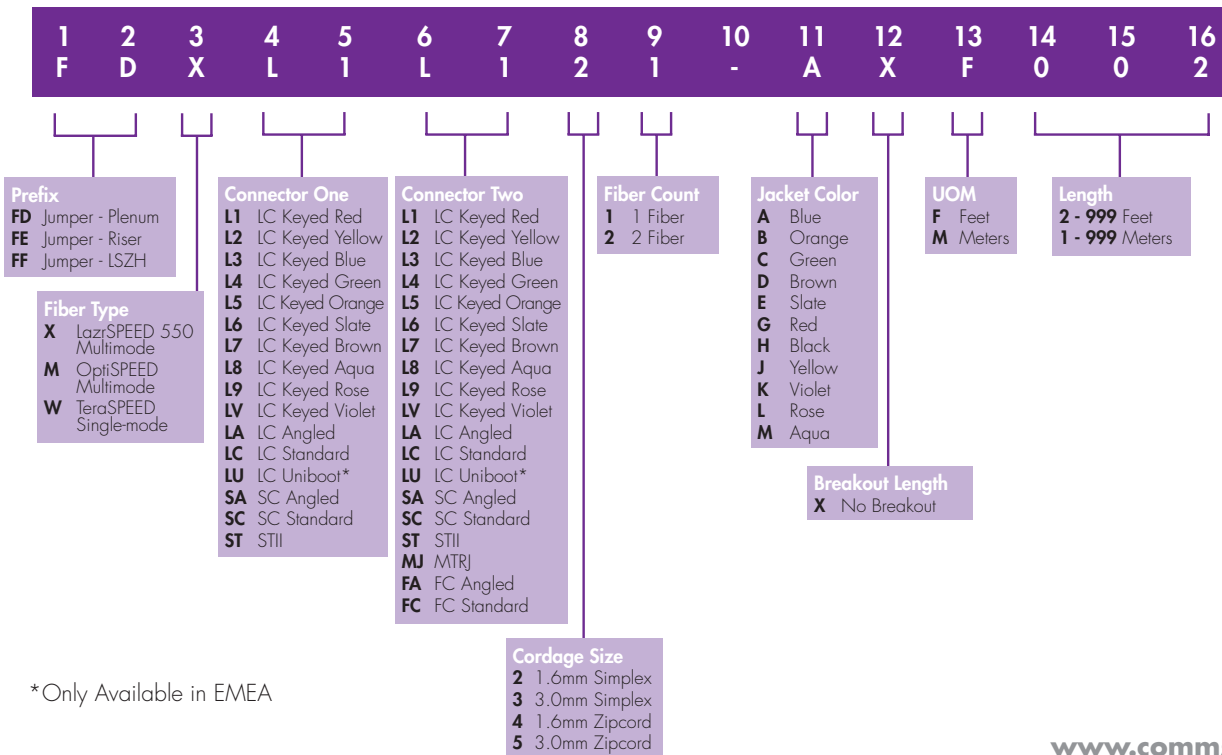
Plenum Array Cord (Product Code Configurator)



Plenum Ruggedized Fanout (Product Code Configurator)



Fiber Patch Cords (Product Code Configurator)



*Only Available in EMEA

STEP 6: SELECT accessories

PULLING GRIPS

Material ID	Catalog Number	Description
760060541	KIT-GRP-12-3/8	Reusable Pulling Grip Kits, 12 Fiber
760060558	KIT-GRP-24-3/8	Reusable Pulling Grip Kits, 24 Fiber
760060566	KIT-GRP-48/72-1/2	Reusable Pulling Grip Kits, 48 and 72 Fiber
760060574	KIT-GRP-96/144-1/2	Reusable Pulling Grip Kits, 96 and 144 Fiber

SHELF AND RACK MOUNT CABLE BRACKETS

Material ID	Catalog Number	Description
760058685	RFE-RMB-6-3/8	Rack Mount Bracket, 6 Cables with 3/8" fittings (12 and 24 Fiber Trunks)
760058677	RFE-RMB-6-1/2	Rack Mount Brackets, 6 cables with 1/2" fittings (48, 72, 96, 144 Fiber Trunks or 12, 24, 48 Fiber Armored Trunks)
760058701	RFE-RMB-5-3/4	Rack Mount Brackets, 5 cables with 3/4" fittings (72, 96, 144 Fiber Armored Trunks)
760058693	RFE-BGND-12	Mounting Brackets, grounding strap kit used with armored cables
760117564	RFE-UMB	Universal Mounting Bracket, bracket to mount up to 3 modules (not for cables)
760122895	BAF-1/2-NPT	Rack Mount Bracket for Armor Fitting, Single Trunk, 1/2"
760122903	BAF-3/4-NPT	Rack Mount Bracket for Armor Fitting, Single Trunk, 3/4"
760122911	BAF-1-NPT	Rack Mount Bracket for Armor Fitting, Single Trunk, 1"
760122929	BAF-1-1/4-NPT	Rack Mount Bracket for Armor Fitting, Single Trunk, 1-1/4"
760122937	BAF-1-1/2-NPT	Rack Mount Bracket for Armor Fitting, Single Trunk, 1-1/2"
760147397	KIT-BRKT-TRNK-CBL-BK	Shelf Mount Bracket, Fiber Trunks, 1/2"

SPLICE KIT WITH DRUMS

Material ID	Catalog Number	Description
760148411	KIT-SW-48-SFS-2FD	Splice Wallet Kit, 48 Single Fusion Splices (1x3x16), 1U/2U Shelf, 2 Fiber Drums
760148429	KIT-SW-36-MES-2FD	Splice Wallet Kit, 36 Mechanical Splices (1x3x12), 1U/2U Shelf, 2 Fiber Drums
760148437	KIT-SW-96-SFS-2FD	Splice Wallet Kit, 96 Single Fusion Splices (1x6x16), 2U Shelf, 2 Fiber Drums
760148445	KIT-SW-72-MES-2FD	Splice Wallet Kit, 72 Mechanical Splices (1x6x12), 2U Shelf, 2 Fiber Drums
760148452	KIT-SW-96-SFS-4FD	Splice Wallet Kit, 96 Single Fusion Splices (1x6x16), 4U Shelf, 4 Fiber Drums
760148460	KIT-SW-72-MES-4FD	Splice Wallet Kit, 72 Mechanical Splices (1x6x12), 4U Shelf, 4 Fiber Drums
760148478	KIT-SW-192-SFS-4FD	Splice Wallet Kit, 192 Single Fusion Splices (2x6x16), 4U Shelf, 4 Fiber Drums
760148486	KIT-SW-144-MES-4FD	Splice Wallet Kit, 144 Mechanical Splices (2x6x12), 4U Shelf, 4 Fiber Drums

ETSI SHELF BRACKET

Material ID	Catalog Number	Description
760147413	KIT-BRKT-ETSI-23-BK	KIT, 23/ETSI Bracket, Black

CLEANING ACCESSORIES

Material ID	Catalog Number	Description
9703907/00	KIT-CLN-CLEAN/INSP	Cleaning and Inspection Kits, Fiber Optic Cleaning Kit Including Microscope and Adapter Tips
9703908/00	KIT-CLN-CLEAN	Cleaning and Inspection Kits, Fiber Optic Cleaning Kit Not Including Microscope
9703909/00	KIT-REFILL	Cleaning and Inspection Kits, Consumables Refill Kit



www.commscope.com

Visit our Web site or contact your local CommScope representative for more information.

© 2011 CommScope, Inc. All rights reserved.

All trademarks identified by ® or ™ are registered trademarks or trademarks, respectively, of CommScope, Inc.

This document is for planning purposes only and is not intended to modify or supplement any specifications or warranties relating to CommScope products or services.

12/11 SO-C-1