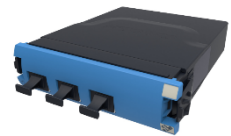


SYSTIMAX® Singlemode Conversion Module Release

Global Communication

Data rates and bandwidth requirements in the data center have grown tremendously over the past several years and show no signs of slowing down. This growth is driven by many factors: Cloud, Virtualization, Software Defined Network (SDN), Data/Storage Convergence and Video-On-Demand.

To support these networking requirements, CommScope announces the addition of two new singlemode conversion modules to the InstaPATCH® 360 product family. These conversion modules allow customers to migrate easily to high speed network while providing 100 percent fiber utilization in their fiber backbones.



Features and Benefits

- Supports applications such as 40G Ethernet (40GBASE-SR4) and 100G Ethernet (100GBASE-SR4), and InfiniBand 4x (IB-4x-SDR, -DDR, -QDR)
- Allows network speed upgrade while achieving 100 percent utilization in backbones
- Supports correct polarity throughout the network using internationally standardized array polarity methodology
- Provides higher connectivity density than aggregations of 2-fiber channels
- Designed with InstaPATCH® 360 style and performance
- Accepts InstaPATCH® trunk cables in the backbone
- Compatible with TeraSPEED® cabling solution
- Contains TeraSPEED® (singlemode) fiber

Ordering Information:

Please visit eCatalog for product specs.

Material ID	Product Code	Descriptions
760220400	360CM12-2X3-TS	InstaPATCH® 360CM 2x3 TeraSPEED® Conversion Module, 3 - 8 Fiber Equipment MPO (male) ports, iPatch Ready
760220418	360CM12-4X6-TS	InstaPATCH® 360CM 4x6 TeraSPEED® Conversion Module, 6 - 8 Fiber Equipment MPO (male) ports, iPatch Ready