

COMMScope®



imVision® System Manager

Infrastructure Management Software

imVision System Manager

Vision

imVision System Manager can provide a **complete view of your physical infrastructure**, including panels, faceplates, network equipment and other IP devices. Locating these items becomes even easier when the connectivity map is overlaid with CAD drawings of your building or campus.

System Manager **schedules and tracks moves, adds and changes**. Since it knows which services are provided on each port, it can select the best route for new connections and initiate guided patching jobs. This vision is especially valuable for data center applications, where a new server may require six or more connections.

When new connections are made, System Manager **can remotely trace the complete path** from an end device (such as a server, workstation, IP phone or printer) to the service-providing port on a switch.

System Manager **tracks the status of each work order**, and can alert an operations manager if a job is not completed on schedule.

Upon job completion, System Manager can **automatically enable switch ports** to ensure that service is granted only to authorized users.

System Manager can **track devices** as they are moved around a network, and by integrating with wireless access points, it can track **wireless devices** as well. For services requiring **Power over Ethernet**, System Manager can integrate with PoE devices to verify power is available to a connection.

An SNMP service and an XML API allow System Manager to integrate with **Network Management Systems (NMS)**. Through the SNMP service, information and change-triggered alarms can be sent directly to the NMS console, and the XML API provides query and control access to the System Manager Configuration Management Database.

Knowledge

Since imVision System Manager communicates with your physical and network infrastructure, it provides you with the knowledge you need to maintain, document and enhance your network.

Unexpected changes to your network are detected by iPatch intelligent copper and fiber panels, and reported immediately to network operators for resolution.

Alerts can arrive as pop-up notifications on the user interface, as Email or text messages, or as SNMP traps to external Network Management Systems.

Device Discovery allows System Manager to determine what devices are connected to the network and where.

By communicating with **LAN switches**, **SAN switches** and other IP-enabled devices, System Manager can correlate device and network information with the physical layer configuration management database.

Reports can be viewed, printed and even set to run on a recurring schedule.

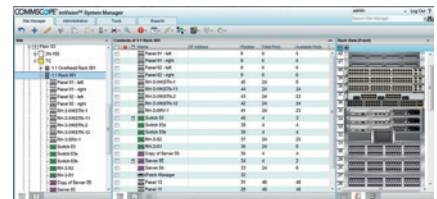
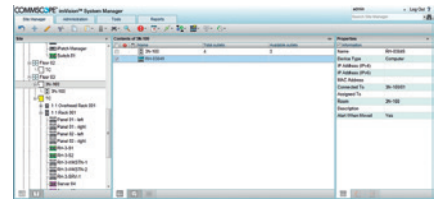
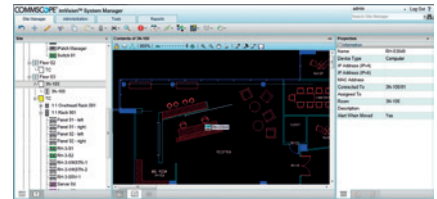
Control

imVision System Manager empowers you with a configuration management database for your physical layer infrastructure powered a SQL database.

With the System Manager **web-based** interface, users can monitor and manage their infrastructure anywhere, any time via their corporate web browser.

In the event of a disaster, System Manager pays big dividends, since its connectivity database, linked with **Intelligent Service Provisioning**, can save days of labor and lost productivity.

imVision System Manager **licensing options are available for any size installation** as shown on the last page. In addition to the Enterprise license, optional integrations packages are available.



imVision System Manager software puts you in control of your network with an easy-to-use web-based user interface.

Document, monitor and manage your network with the Vision and Knowledge you need to be in Control.

imVision System Manager Infrastructure Management Software



Vision + Knowledge = Control

- Accurately and automatically document your network's physical layer
- Discover network devices and map them to the physical layer
- Dynamically track IP devices in your network as they move within your organization
- Support LAN and SAN deployments in a wide variety of environments, including data centers, traditional workplaces, intelligent buildings and campuses
- Manage electronic work orders
- Choose from a number of license options
- Integrate simply with external network management systems



Giving you the power to plan, implement and document changes to your network infrastructure

Understanding your physical infrastructure's configuration brings with it the power to control your network, reduce operating costs, improve efficiency and increase reliability. As part of SYSTIMAX® Infrastructure Management Solutions, imVision System Manager Software enables you to document and monitor your infrastructure through a standard web browser.

Management gains a high-level, real-time view of end-to-end network connections.

Faulty connections can be traced within seconds. Paper labels are replaced with end-to-end circuit descriptions. Electronic work orders make changes simple.

Unplanned changes and alarms are reported automatically so network administrators can respond rapidly.

To succeed in today's demanding IT environment, CommScope is proud to bring you a unique tool to increase your Vision, Knowledge, and Control – SYSTIMAX imVision System Manager.

Powerful Features Give You Control

- **Data Center Feature**
 - SAN device discovery with support for many popular SAN switches
 - Plan for and deploy servers via templates
 - Discover VLANs and use them for intelligent service provisioning
 - Automatic discovery endpoint system names
 - Track rack capacity and device details
- **Outside Plant Features**
 - Document layout of cable vaults
 - Document path of cables through cable vaults
- **Language Support**
 - Operate imVision System Manager and Controllers in your own language (see table on page 4)
- **Reports**
 - Access reports from your browser
 - Print, export or Email to other users
- **Software Integration Options**
 - Memorize reports and run them automatically on a regular basis
 - Support for multiple languages
- **Software Assurance**
 - Increase the control imVision System Manager gives you by integrating it with other systems
- **Software Assurance**
 - A 12-month subscription entitles customers to software updates and upgrades, plus access to a dedicated Web site offering access support information 24 hours a day, 7 days a week.
 - First year is included with purchase of imVision System Manager in certified installations
 - Renewals invoiced annually
- **Web Site**
 - Register iPatch hardware and software
 - Download software updates, upgrades, utilities and new switch support files
 - Access online KnowledgeBase, FAQs and industry white papers

imVision System Manager Features

With System Manager as the dashboard for your Infrastructure Management Solutions, you gain the Vision and Knowledge you need to take Control of your network.

imVision System Manager					
iPatch Ports (max)	Unlimited	10,000	5,000	2,000	1,000
Generic Ports (max)	Unlimited			2,000	1,000
Multiple Languages	YES				
Guided Patching					
Auto-Documentation					
Device Discovery					
Integration API					
Customizable Reports					
Event Notification					
Software Assurance	1st Year included for Certified Installations				

(1) Maximum number of iPatch ports = iPatch copper ports plus iPatch duplex fiber ports, rounded up to a full panel/shelf

System Requirements*

Web Browser Requirements

System Manager supports the following Web browsers for use when accessing the web site that hosts the application:

- Internet Explorer 8, 9
- Firefox 11, 12
- Safari 4, 5

Supported Software—Server Computer

System Manager supports the following operating systems and database applications for the server computer:

Software	Requirement
Operating System	Windows Server 2008 (R1 and R2) Windows Server 2003 (SP2) Windows 7 Vista (SP1 and SP2)
Database*	SQL Server 2008 (R1 and R2) SQL Server 2005

* When installing System Manager, the Setup program automatically installs SQL 2008 Server Express unless the server is already running Microsoft SQL Server 2005 or a later version.

Minimum Hardware Requirements—Server Computer

To run System Manager, the following minimum equipment configuration is required for the server computer. Additional memory, disk space, and processing power may greatly enhance overall productivity. Running other applications on the same system is not recommended as it may degrade the performance of System Manager or cause interoperability problems.

We also strongly recommend using a backup (uninterruptible) power supply for your server computer. A backup power supply prevents power failures from interrupting communications between System Manager and the imVision equipment.

Hardware	Requirement
Memory	4 GB
Processor	Dual Core / Multi-Core Processor
Disk Space	1 GB for program installation 30 GB for database, logs, tools, utilities
Display	1280 × 1024 resolution, 32-bit color, 14" or larger
Removable Storage	CD-ROM or DVD-ROM
Networking	100/1000 Network Interface Card (NIC) Optional: Multiple NICs

Language Features

Language	User Interface	Web Reports	Online Help	Controller
Chinese	✓	✓		✓
Danish	✓	✓		✓
English	✓	✓	✓	✓
French	✓	✓		✓
German	✓	✓		✓
Italian	✓	✓		✓
Korean	✓	✓		✓
Polish	✓	✓		✓
Russian	✓	✓		✓
Spanish	✓	✓		✓
Portuguese	✓	✓		✓

VISION + KNOWLEDGE = CONTROL

With a Web-enabled dashboard for your network, you will know the status of your physical layer network. You can also be alerted to completed, overdue or unexpected changes.

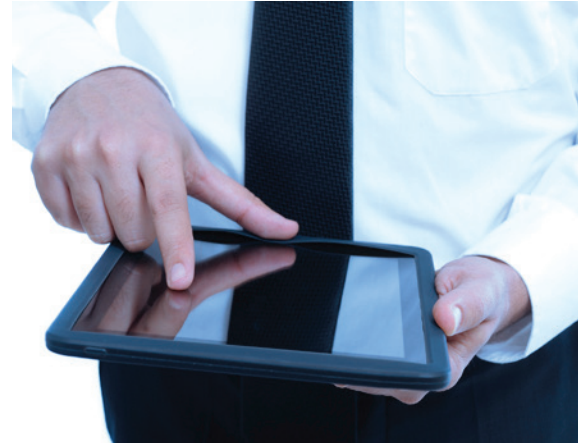
System Manager Enterprise Edition

The Enterprise Edition license provides full imVision System Manager functionality.

This includes unlimited concurrent users, SNMP device discovery, the ability to customize reports and XML API. Using the API, third party applications (such as Network Management Systems) can be configured to interact with the System Manager database.

Software Assurance

The Software Assurance Program ensures you will get peak performance from your System Manager software by providing a full range of online services, including version updates and upgrades. The first year of Software Assurance is included in the purchase price of the Enterprise Edition. Software Assurance is renewable on an annual basis thereafter.



Product Category	Material ID	Detailed Description
imVision Software (Base)	760165621	imVision System Manager Enterprise 1000
	760111187	imVision System Manager Enterprise 2000
	760165639	imVision System Manager Enterprise 5000
	760111195	imVision System Manager Enterprise 10000
	760090068	imVision System Manager Enterprise Unlimited
imVision Software (Upgrade)	760165514	imVision Upgrade System Manager Enterprise 1000 to 2000
	760165522	imVision Upgrade System Manager Enterprise 1000 to 5000
	760165530	imVision Upgrade System Manager Enterprise 1000 to 10000
	760165548	imVision Upgrade System Manager Enterprise 1000 to Unlimited
	760165555	imVision Upgrade System Manager Enterprise 2000 to 5000
	760111203	imVision Upgrade System Manager Enterprise 2000 to 10000
	760111211	imVision Upgrade System Manager Enterprise 2000 to Unlimited
	760165563	imVision Upgrade System Manager Enterprise 5000 to 10000
	760165571	imVision Upgrade System Manager Enterprise 5000 to Unlimited
	760111229	imVision Upgrade System Manager Enterprise 10000 to Unlimited
Software Assurance	760165647	Software Assurance System Manager Enterprise 1000
	760111237	Software Assurance System Manager Enterprise 2000
	760165654	Software Assurance System Manager Enterprise 5000
	760111245	Software Assurance System Manager Enterprise 10000
	760090266	Software Assurance System Manager Enterprise Unlimited
System Integration	760165076	imVision Extended XML Interface

Contact your CommScope Partner or visit www.commscope.com/imvision for more information on the Vision, Knowledge and Control that imVision Intelligent Infrastructure Solutions can bring to your network.

Everyone communicates. It's the essence of the human experience. *How* we communicate is evolving. Technology is reshaping the way we live, learn and thrive. The epicenter of this transformation is the network—our passion. Our experts are rethinking the purpose, role and usage of networks to help our customers increase bandwidth, expand capacity, enhance efficiency, speed deployment and simplify migration. From remote cell sites to massive sports arenas, from busy airports to state-of-the-art data centers—we provide the essential expertise and vital infrastructure your business needs to succeed. The world's most advanced networks rely on CommScope connectivity.



commscope.com

Visit our website or contact your local CommScope representative for more information.

© 2017 CommScope, Inc. All rights reserved.

All trademarks identified by ® or ™ are registered trademarks or trademarks, respectively, of CommScope, Inc. This document is for planning purposes only and is not intended to modify or supplement any specifications or warranties relating to CommScope products or services. CommScope is committed to the highest standards of business integrity and environmental sustainability, with a number of CommScope's facilities across the globe certified in accordance with international standards, including ISO 9001, TL 9000, and ISO 14001. Further information regarding CommScope's commitment can be found at www.commscope.com/About-Us/Corporate-Responsibility-and-Sustainability.

BR-106331.2-EN (02/17)