



THINK FIBER. THINK COMMSCOPE.

Create a more powerful, more networked world built on the promise of Speed, Simplicity and Savings. All it takes is the courage to imagine it—and fiber solutions from CommScope.

COMMSCOPE®

Welcome to our complete ecosystem of fiber solutions.

commscope.com

Speed. Simplicity. Savings.

Fiber is transforming communication networks for three very smart reasons: it offers the ultimate in speed, simplicity and savings that wireless, enterprise and broadband networks demand. A complete ecosystem of fiber solutions creates value from procurement to installation to the end-user experience.

- **Speed.** CommScope’s fiber solutions offer incredible speed and bandwidth—and our global manufacturing scale also means faster procurement, faster installations and faster ROI.
- **Simplicity.** Flattening multiple services and protocols into a single, future-ready infrastructure simplifies deployments—and CommScope’s complete line of solutions simplifies design.
- **Savings.** CommScope helps you reduce CapEx by offering scalable fiber solutions that grow and evolve as your network does—and efficient, repeatable installation and maintenance tames OpEx costs too.


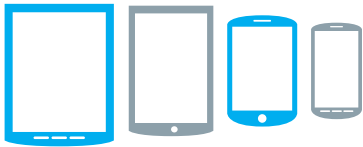
The time to embrace fiber is now. The future won’t wait.

A new information revolution:

In the last decade, we’ve experienced dramatic changes in all facets of our lives.

SMART PHONES & TABLETS

that have unleashed us from desktop computers.




Rapid growth in **CLOUD COMPUTING** aided by flexible, mobile user devices.



THE RISE OF SOCIAL PLATFORMS

to connect colleagues, friends and family worldwide.



NEW NETWORK ELEMENTS

beyond phones, to the telecommunications network (e.g. wearables and sensors).

Fiber is the obvious choice—but why choose CommScope?

Experience, Knowledge, Resources

- > A strong company serving enterprise, cable TV, telecommunication, and wireless for the access, core and edge of the network across the globe
- > A market leader in fiber optics and wireless – two core technologies for the future of networks
- > Values innovation, investing more than \$200 million USD in R&D annually and holds nearly 10,000 patents
- > More than 20,000 employees strong with global partners and operations

GLOBAL LEADER

in Infrastructure Solutions for Communications Networks

20,000+
EMPLOYEES

>30

9,800
PATENTS

~\$5B*
SALES

**MANUFACTURING
& DISTRIBUTION
FACILITIES**

* Unaudited pro-forma 2015 revenue as though BNS acquisition had been completed January 1, 2015.

The world's most advanced networks rely on CommScope connectivity.



Indoor and outdoor wireless networks



Data centers and central offices



Connected and efficient buildings



Access and backhaul networks

Thinking Fiber means rethinking where fiber can go.

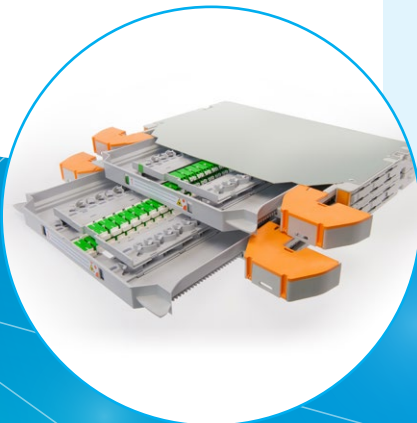
For instance, CommScope solutions have helped make fiber to the home (FTTH) a practical and profitable reality by making it as easy to install as its coaxial ancestor. When you have a FTTH solution that combines the simplicity and flexibility of copper with the speed and bandwidth of fiber, there's no limit to how far your network can go.

Priorities

- Flexibility
- Multi-use
- Capacity

Needs

- Simplicity
- Efficiency
- Speed



The challenges are complex. The solution is simple.

No matter if your fiber ecosystem will power a wireless, enterprise or broadband network, there are a few important questions you must confront.

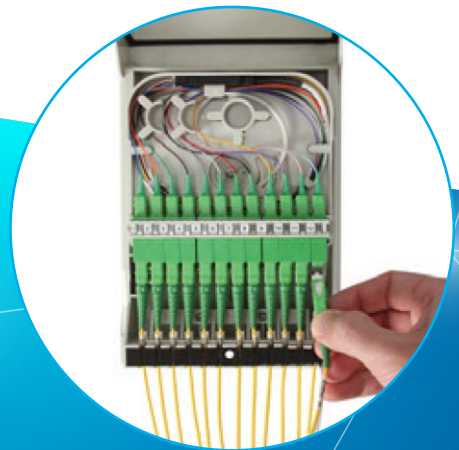
What is the optimal network evolution strategy? Embracing the fiber ecosystem involves new factors regarding capacity, expandability, agility and redundancy. What works for one network may not work for yours. How can you be sure you're getting the performance and future-readiness you need?

How to speed up deployments and time-to market? Fiber infrastructure is a long-term investment, but you can't wait long to have it online and generating revenue. Since fiber has traditionally been more difficult to install, how can you overcome the time costs?

What's the best way to increase bandwidth and capacity? Not all fiber solutions are built alike, and not all deliver the same performance. How can you ensure consistency, quality and compatibility across all the components in your complex fiber infrastructure?

How can it all happen on budget—and on time? Fiber solutions can require expensive fiber specialists that are hard to find—and large-scale rollouts often demand long lead times from manufacturers. Is there any way to reduce the cost and delay?

These are complex challenges. Fortunately, the solution is simple. **The solution is CommScope.**



The evolution of the access network

Build speed, simplicity and savings into your infrastructure.

CommScope is a global leader in fiber solutions for a lot of reasons.

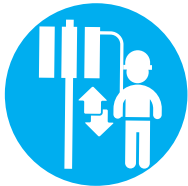
We offer superior value to our partners all over the world by focusing on the capabilities that make it possible for us to deliver faster, better, more future-ready fiber solutions.

Our Capabilities



Rapid Prototyping

Innovative and custom product designs, produced with composite materials and advanced 3D printers, that can be quickly validated in your lab for proof of concept.



Network Design

Our team of experienced solution architects and field engineers can help you make the best choices for an optimal network design and migration plan.



End-to-End Solutions

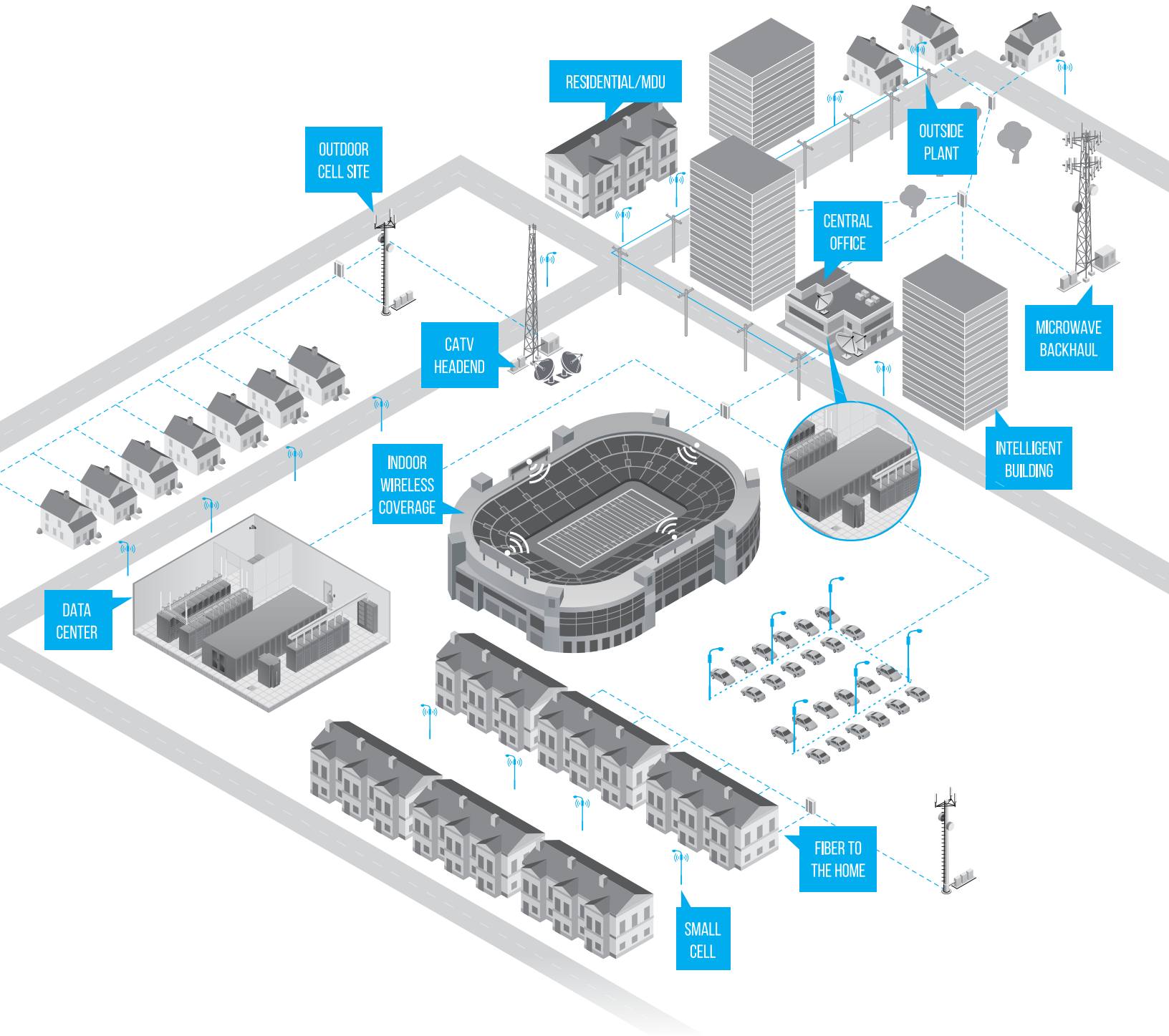
We offer a comprehensive fiber portfolio, spanning the customer premises, MDU, fiber access network, through to central office and headend equipment.



Global Manufacturing

With 30 manufacturing facilities around the world, backed by an integrated supply chain, we have the scale to deliver.

THINK FIBER. THINK COMMSCOPE.



Everyone communicates. It's the essence of the human experience. How we communicate is evolving. Technology is reshaping the way we live, learn and thrive. The epicenter of this transformation is the network—our passion. Our experts are rethinking the purpose, role and usage of networks to help our customers increase bandwidth, expand capacity, enhance efficiency, speed deployment and simplify migration. From remote cell sites to massive sports arenas, from busy airports to state-of-the-art data centers—we provide the essential expertise and vital infrastructure your business needs to succeed. The world's most advanced networks rely on CommScope connectivity.



commscope.com

Visit our website or contact your local CommScope representative for more information.

© 2016 CommScope, Inc. All rights reserved.

All trademarks identified by ® or ™ are registered trademarks or trademarks, respectively, of CommScope, Inc. For planning purposes only. CommScope reserves the right to modify the specifications or product without notice. This document is not intended to modify or supplement and specifications or warranties relating to CommScope products or services. CommScope is certified according to ISO 9001, TL 9000, and ISO 14001.

BR-110665.2-EN (12/16)