

# XE-Medium Controller Enclosure

Computrols is excited to offer its custom-designed and purpose-built XE Series Controller Enclosure. Measuring 21"x 30"x 8", this stylish powdercoated black enclosure offers maximum flexibility for installations of all scopes. Consider the total of twenty 0.50"/0.75" and seven 1"/1.25" double knockouts on both sides and the floor, along with the specially designed door that can easily be reversed to open from either side—and you'll agree that this is possibly the most adaptable wall-mount enclosure you will ever use.

## Product Highlights

- Reversible, fully vented door
- Door lock swaps to either side
- Adaptable backplane
- Door swings open a full 190°
- Scratch resistant powdercoat finish
- Door grounding posts
- Hand-held terminal pocket inside door
- Wire scrap slot on bottom
- Packing Casket and Installation Kit
- Competitive pricing

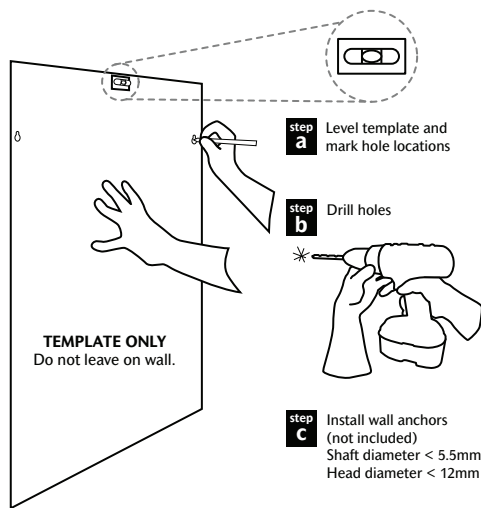
## Specifications

Enclosure Dimensions	21"x 30"x 8"
Backplane Dimensions	19.44"x 27.75"
Knockouts	27 total; 10 per side, 7 on bottom
Construction	Enclosure: 14 gauge cold-rolled steel Backplane: 16 gauge cold-rolled steel
Finish	Low-gloss black powdercoat
Mounting Options	Wall or semi-flush
Rating	NEMA Type I

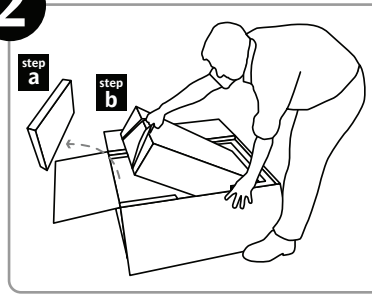


1

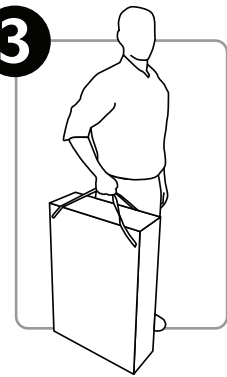
### Computrols Easy-Level Template



2



3



4



5

